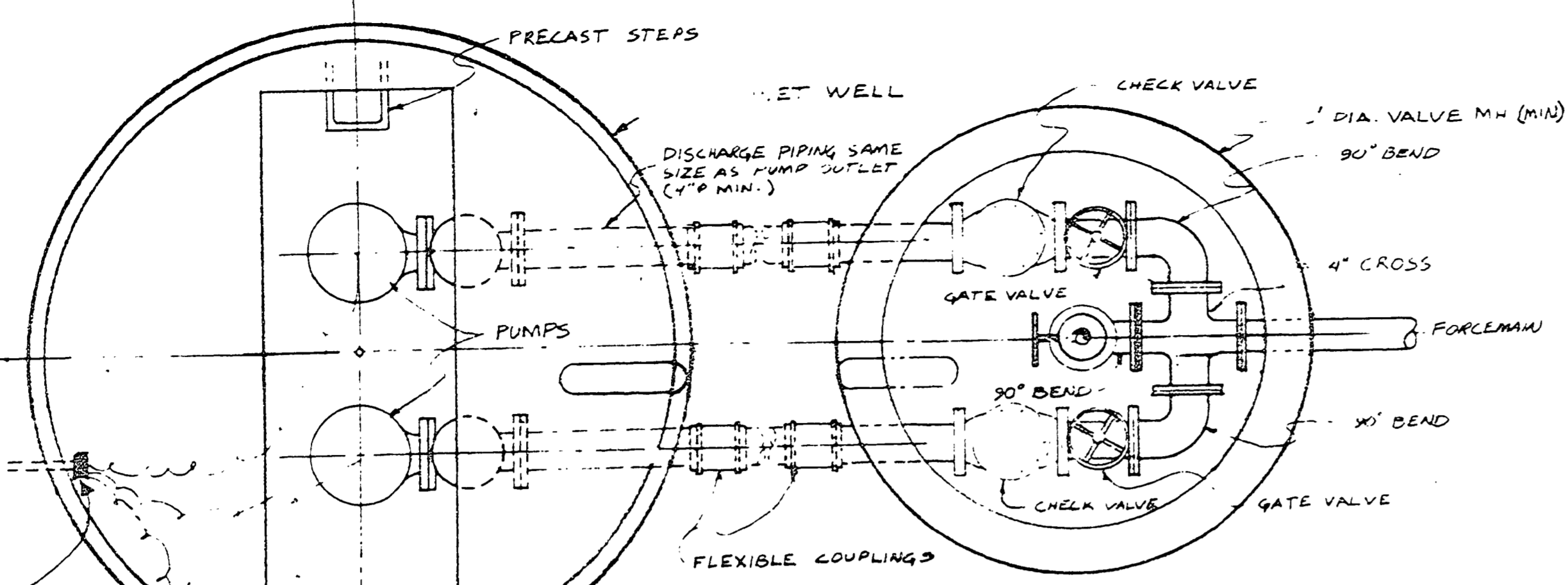
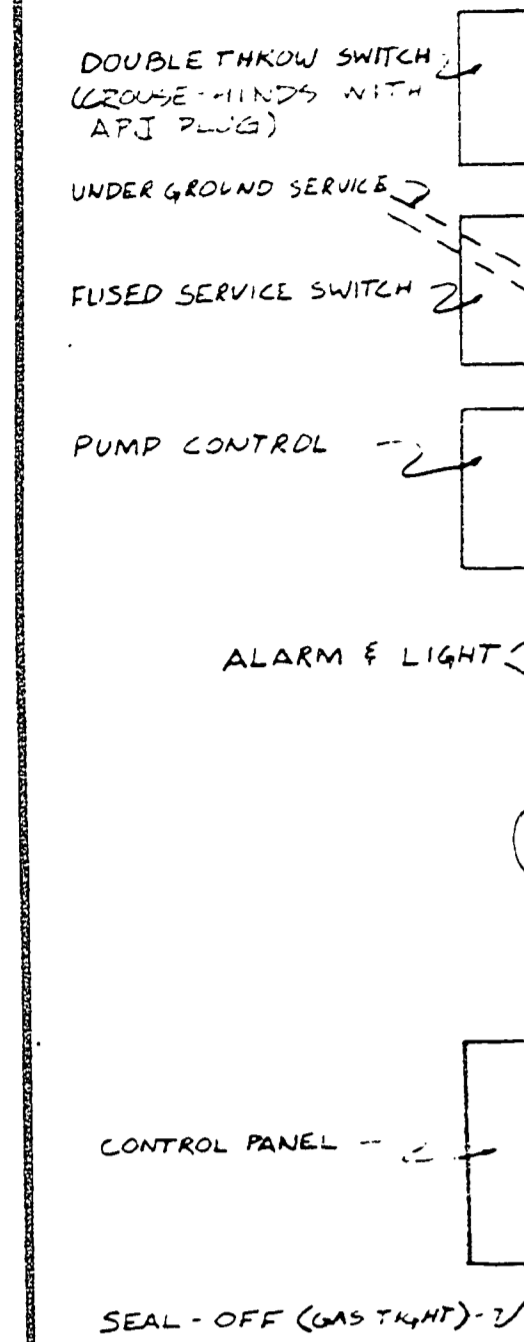


48 HOURS
(2 WORKING DAYS)
BEFORE YOU DIG
CALL MISS DIG
800-482-7171
(TOLL FREE)

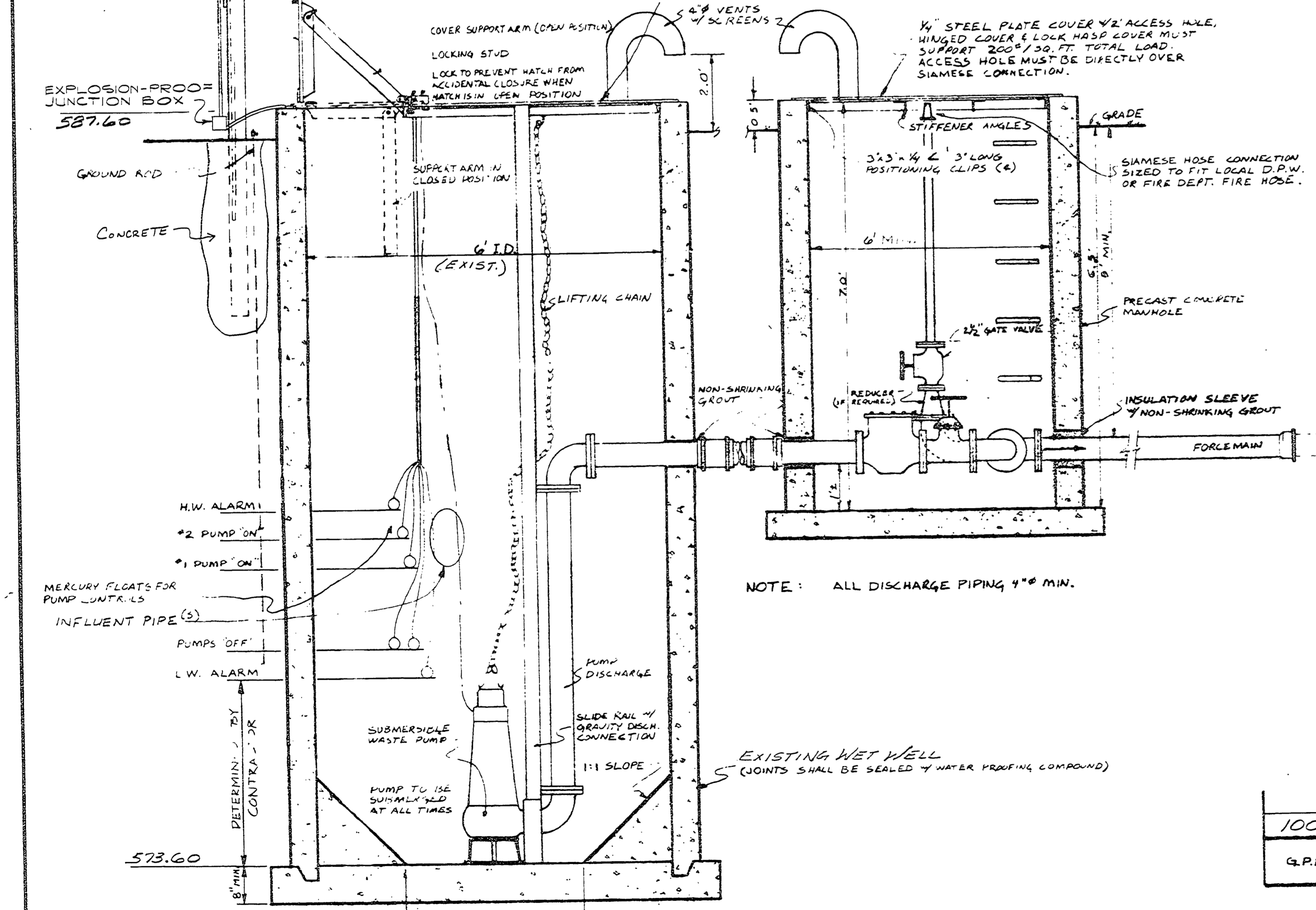
(TYPICAL CONTROL PANEL LAYOUT)



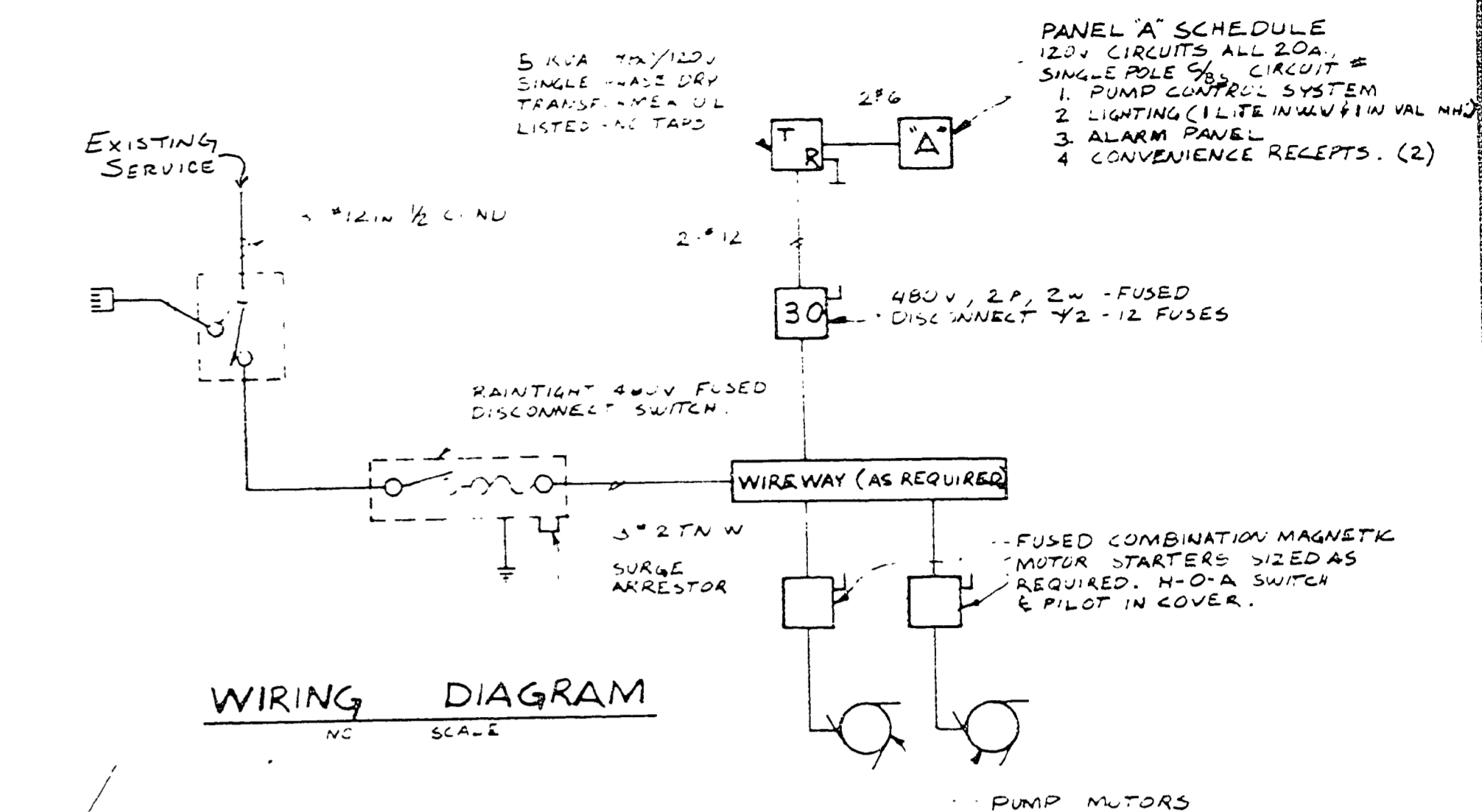
WET WELL COVER :
 1. MUST HAVE OPENINGS (ACCESS HATCH) TO ALLOW INDIVIDUAL PUMP REMOVAL.
 2. MUST BE WATER TIGHT.
 3. MUST BE CAPABLE OF SUPPORTING PORTABLE HAND OPERATED WINCH FOR PUMP REMOVAL.
 4. MUST HAVE DEVICE THAT WILL ALLOW PUMP LIFTING CHAIN TO BE ACCESSIBLE TO A PERSON STANDING ON COVER. WELT ACCESS HATCH IS 14" WIDE.

PLAN
NO SCALE

GALVANIZED STEEL FRAME FOR ELECTRICAL RACK
 ACCESS COVER - 14" R HANDLE
 BUILT SUPPORT ARM TO COVER STIFFENER ANGLE WITH SHOULDER BOLT



NOTE: ALL DISCHARGE PIPING 4" MIN.



WIRING DIAGRAM
NO SCALE

NOTE:
 The Existing 6'-0" Dia. Wet Well Shall Remain in Place. All Pumps, piping, Electrical, Paired Invert in Wet Well, Wet well cover and All other materials not a part of the concrete wet well shall be removed by the contractor and disposed of off-site.
 The Contractor shall furnish and install all new equipment per these plans and specifications.

STATE OF MICHIGAN
 DEPARTMENT OF MANAGEMENT AND BUDGET
Office of Facilities

SHEET	IDENTIFICATION NO.	ISSUED FOR	DATE	DESIGNED
	PROJECT	PRELIMINARY		DRAWN
	STATE ACCOUNT	CONSTRUCTION		CHECKED
		FINAL RECORD		APPROVED

CHRISTMAN
 CONSTRUCTION SERVICES
 CONSTRUCTION MANAGERS • GENERAL CONTRACTORS • CONSTRUCTION ENGINEERS • CONSTRUCTORS
 Main Office: 408 E. Main Street, Lansing, Michigan 48933 P.O. Box 14170, 48901 Phone: 517/482-1488
 Flint Office: 2512 W. Branch Road, Flint, Michigan 48907 P.O. Box 248, 48901 Phone: 313/234-6633

										BY CONTRACTOR					
100	30	EXIST.	(2) 6"	4"	4"	EXIST.	EXIST.	581.00	581.75						
G.P.M.	HEAD	WET WELL DIAMETER	INFLUENT PIPE DIA	PUMP DISCHARGE PIPING #	PALEYS DIA	TOP ELEV.	BOTTOM ELEV.	INLET ELEV.	DISCHARGE ELEV.	WATER TANK EL.	WELL LEVEL ALARM	#1 PUMP ON	#2 PUMP ON	PUMPS OFF	HIGH LEVEL ALARM

STATION DESIGN DATA

L-118



ISSUE & REVISION BLOCK	RECORD DRAWING	JW	8/92

ARCHITECTS
 ENGINEERS
 PLANNERS
 SURVEYORS

GOVE ASSOCIATES, INC.
 1601 Portage Street
 Kalamazoo, Michigan

SCALE: AS SHOWN
 DATE: 5-3-90
 DRAWN BY: RMR
 CHECKED BY: JW
 APPROVED BY: MBS

PLANS FOR:
 SUBMERSIBLE LIFT STATION
 P.J. HOFFMASTER STATE PARK, DNR
 MUSKOGON COUNTY, MICHIGAN

SHEET 7
 OF 9
 PROJECT NUMBER
 C13717-3

