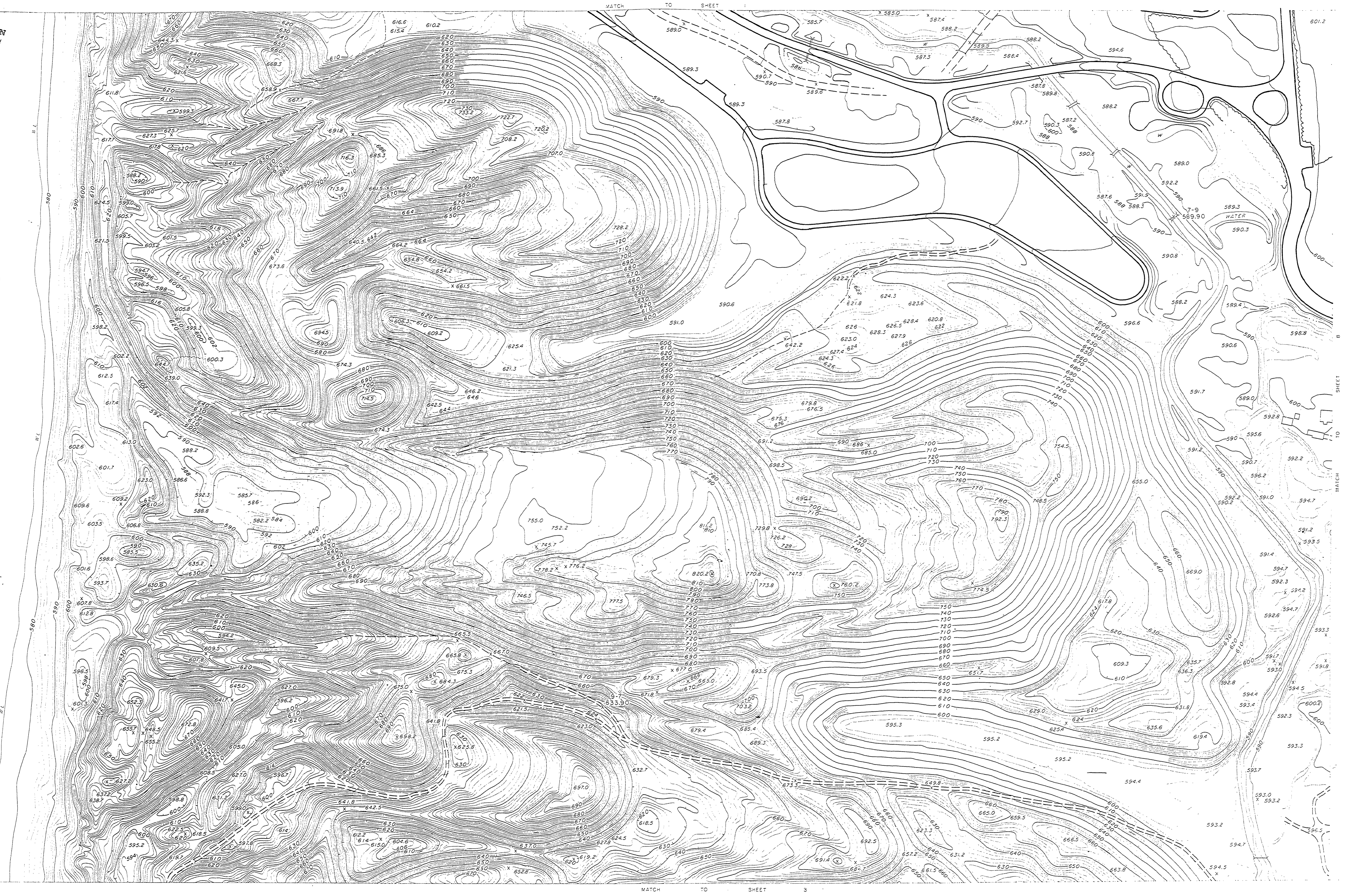


REVISIONS	DATE	NO.	DATE	BY
1		1		
2		2		
3		3		
4		4		
5		5		
6		6		

LAKE MICHIGAN



DESIGNED BY
DRAWN BY
CHECKED BY

ARCHITECTURAL
ENGINEERING
LANDSCAPE

APPROVED
DATE

CHIEF OF DIVISION
ASST. CHIEF OF DIVISION
CHIEF OF PLANNING AND CONSTRUCTION

PRIMARY ROADS
SECONDARY ROADS
RAILROADS

BUILDINGS
PERENNIAL STREAMS
INTERMITTENT STREAMS

BRIDGES
CULVERT
TRAVERSE STATION

VERTICAL CONTROL - MSL
TREES
TREES

ABRAMS AERIAL SURVEY CORPORATION
LANSING, MICHIGAN

MICHIGAN
DEPARTMENT OF CONSERVATION
PARKS AND RECREATION DIVISION

HOFFMASTER STATE PARK
AS-BUILT DWG.
DATE OF PHOTOGRAPHY APRIL 1962
DATE OF MAPPING JANUARY 1963

SHEET NO. 2 OF 12
PLAN NO. L-95

