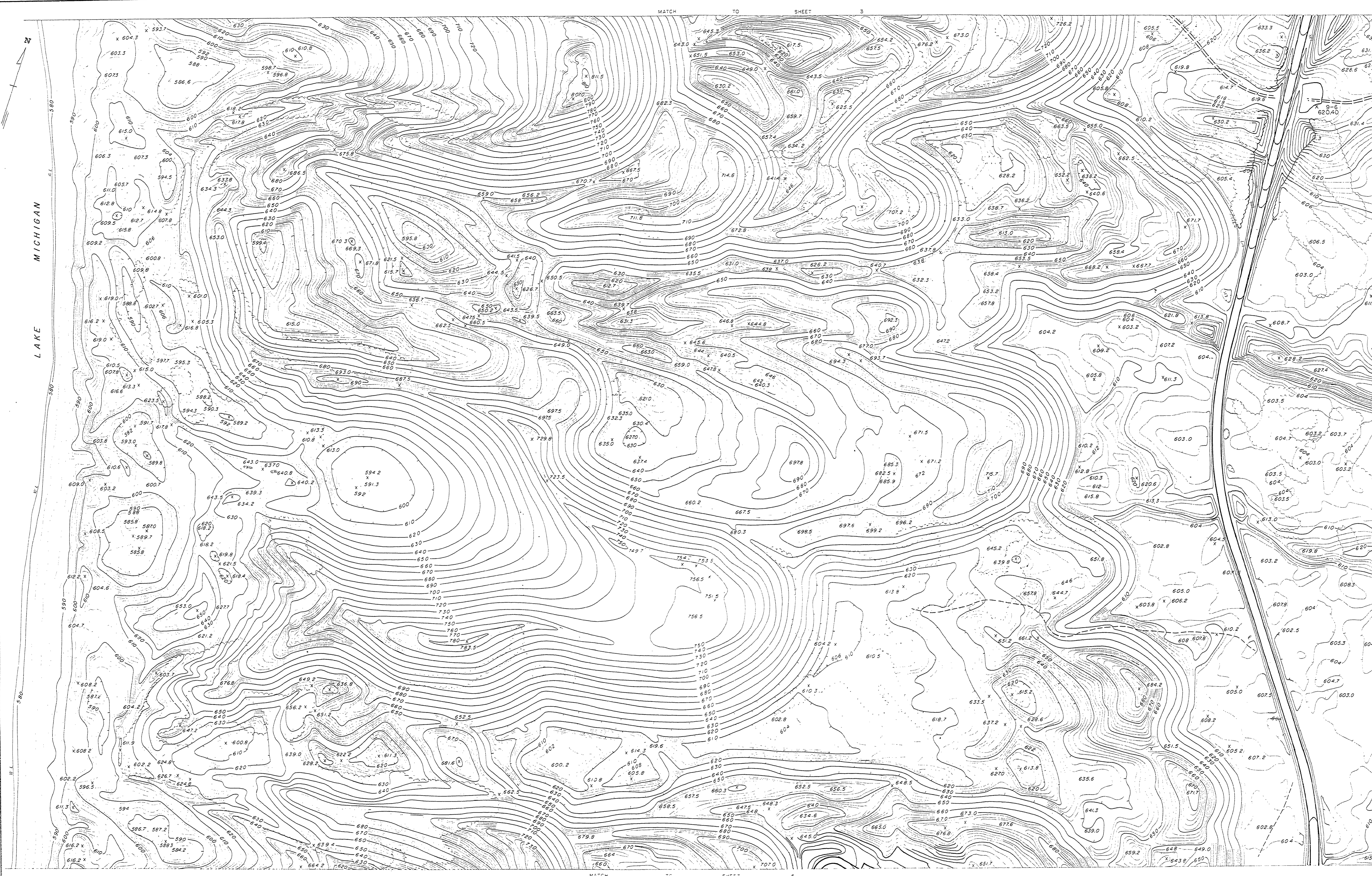


DESIGNED BY	DRAWN BY	CHECKED BY	DATE	REVIEWED	DATE	APPROVED	DATE	NO.	DATE	BY	REVISIONS	DATE	BY
			ARCHITECTURAL	ENGINEERING	LANDSCAPE	CHIEF OF DIVISION	1	2	3	4	5	6	



PRIMARY ROADS	BUILDINGS	BRIDGES	VERTICAL CONTROL - MSL
SECONDARY ROADS	PERENNIAL STREAMS	CULVERT	TREES
RAILROADS	INTERMITTENT STREAMS	TRAVERSE STATION	TREES

ABRAMS AERIAL SURVEY CORPORATION
 LANSING, MICHIGAN
 MICHIGAN DEPARTMENT OF CONSERVATION
 PARKS AND RECREATION DIVISION

HOFFMASTER STATE PARK
 AS-BUILT DWG. CONTOUR INTERVAL 2'
 SCALE 1"=100'
 DATE OF PHOTOGRAPHY APRIL 1962
 DATE OF MAPPING JANUARY 1963
 SHEET NO. 4 OF 12
 PLAN NO. L-95