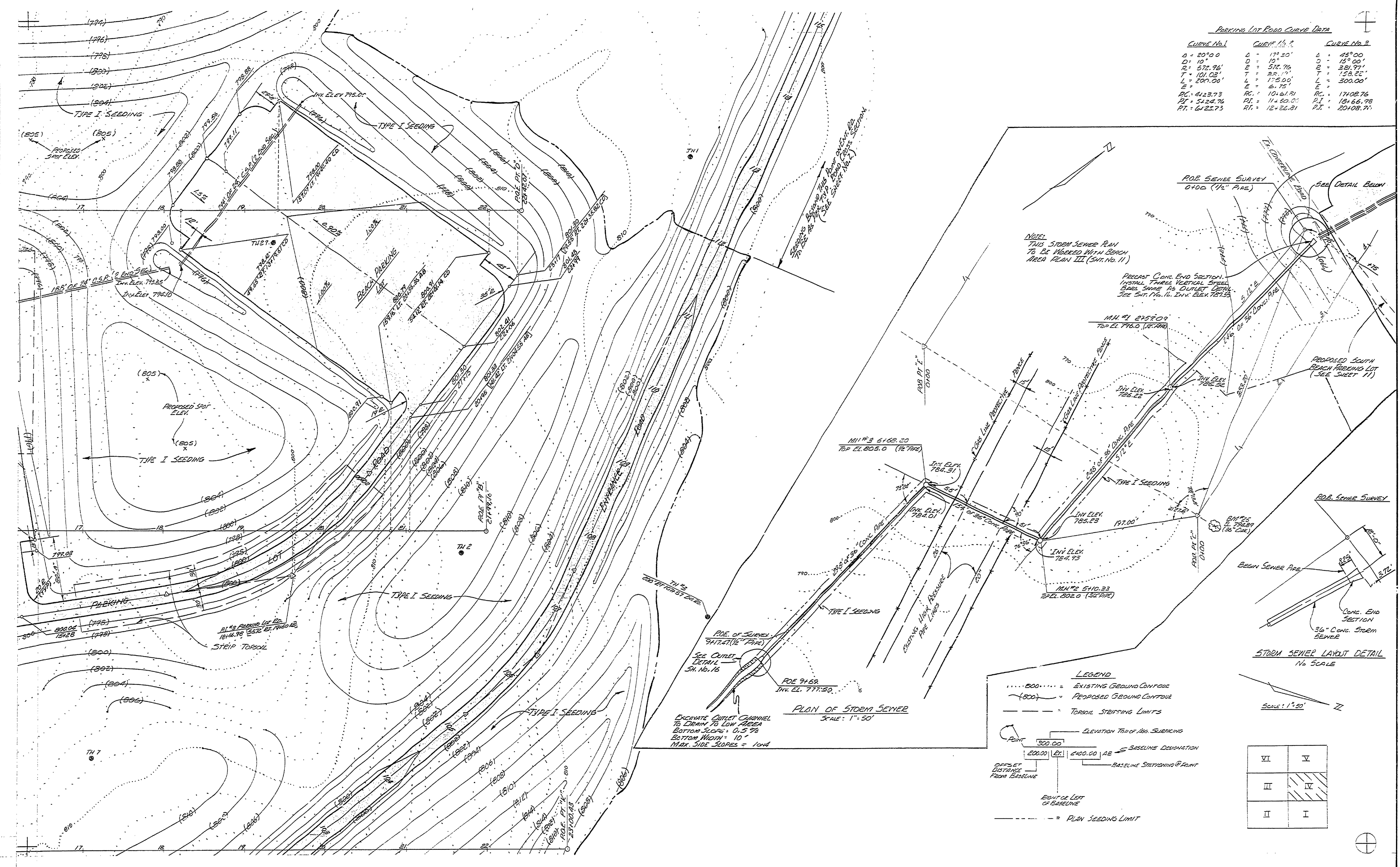


PARKING LOT ROAD CURVE DATA

CURVE No. 1	CURVE No. 2	CURVE No. 3
Δ = 20° 00'	Δ = 17° 30'	Δ = 45° 00'
D = 512.96'	D = 512.716'	D = 331.971'
T = 101.02'	T = 28.171'	T = 129.82'
L = 200.00'	L = 175.00'	L = 300.00'
E = 6.75'	E = 6.75'	E = 6.75'
PC = 4123.73	PC = 10461.51	PC = 17108.76
PT = 5422.76	PT = 11450.05	PT = 18466.78
PI = 6123.73	PI = 12426.21	PI = 20108.71

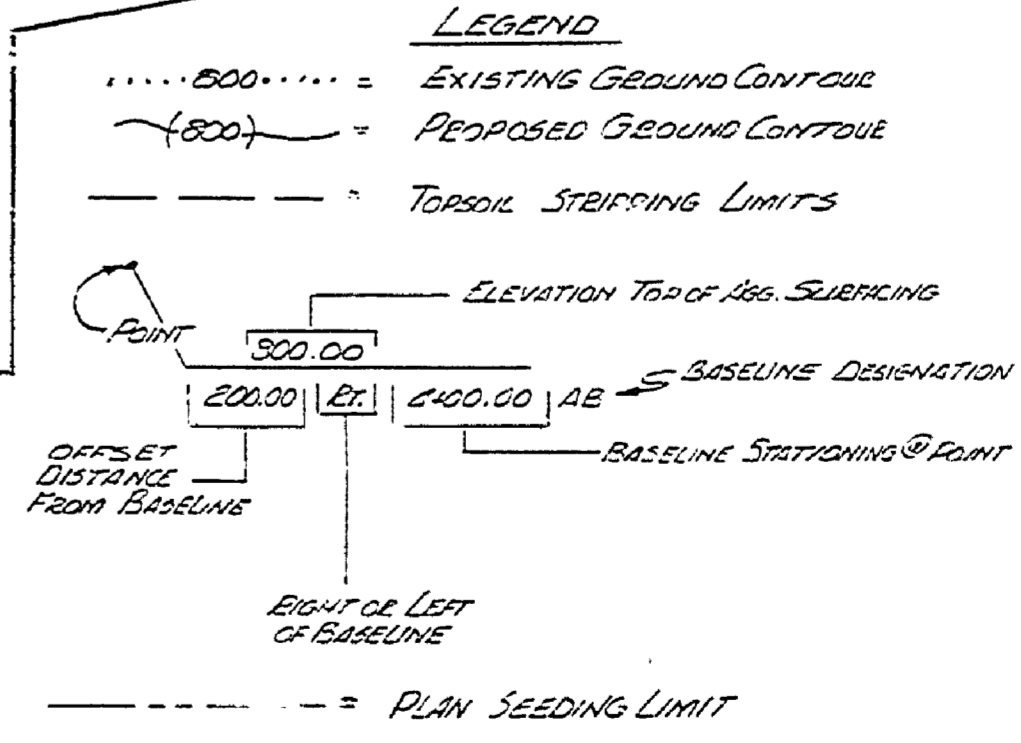


NOTE: THIS STORM SEWER PLAN TO BE MOVED WITH BEACH AREA PLAN III (SH. No. 11)

PRECAST CONC. END SECTION. INSTALL THREE VERTICAL STEEL BARS 3/8" AS OUTLET DETAIL. SEE SHT. No. 14. INV. ELEV. 781.55

PROPOSED SOUTH BEACH PARKING LOT (SEE SHEET 11)

Excavate Outlet Channel to Drain to Low Area
Bottom Slope = 0.5 %
Bottom Width = 10"
Max. Side Slopes = 1 on 4



VI	V
III	IV
II	I

SURVEYED BY L. THOMPSON 5-72	DRAWN BY J. LEMMON 12-73	NO. 1. DATE 9/74	BY RCH	REVISIONS ADDED SEEDING	NO. 3. DATE	BY	REVISIONS	MICHIGAN DEPARTMENT OF NATURAL RESOURCES	BEACH AREA PLAN II	SLEERY HOLLOW STATE PARK AREA OR PARK	PROJECT NO. 21-9554
DESIGNED BY R. HRAUSLER 12-73	CHECKED BY	NO. 2. DATE	BY	REVISIONS	NO. 4. DATE	BY	REVISIONS	DEPARTMENT OF NATURAL RESOURCES	BEACH, ROADS, AND LAKEBED	PROJECT	SHEET 12 OF 25 PLAN NO. E-101