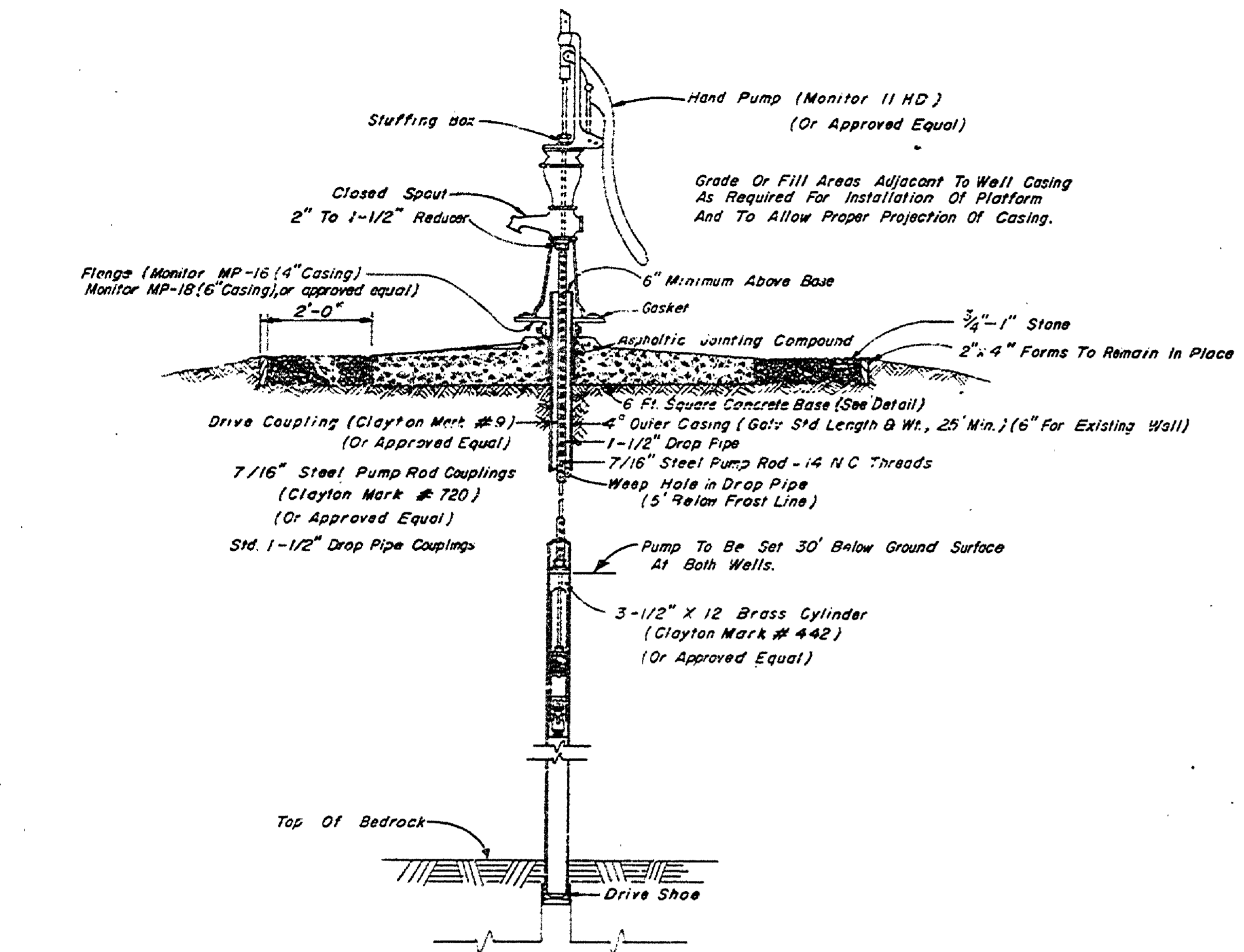
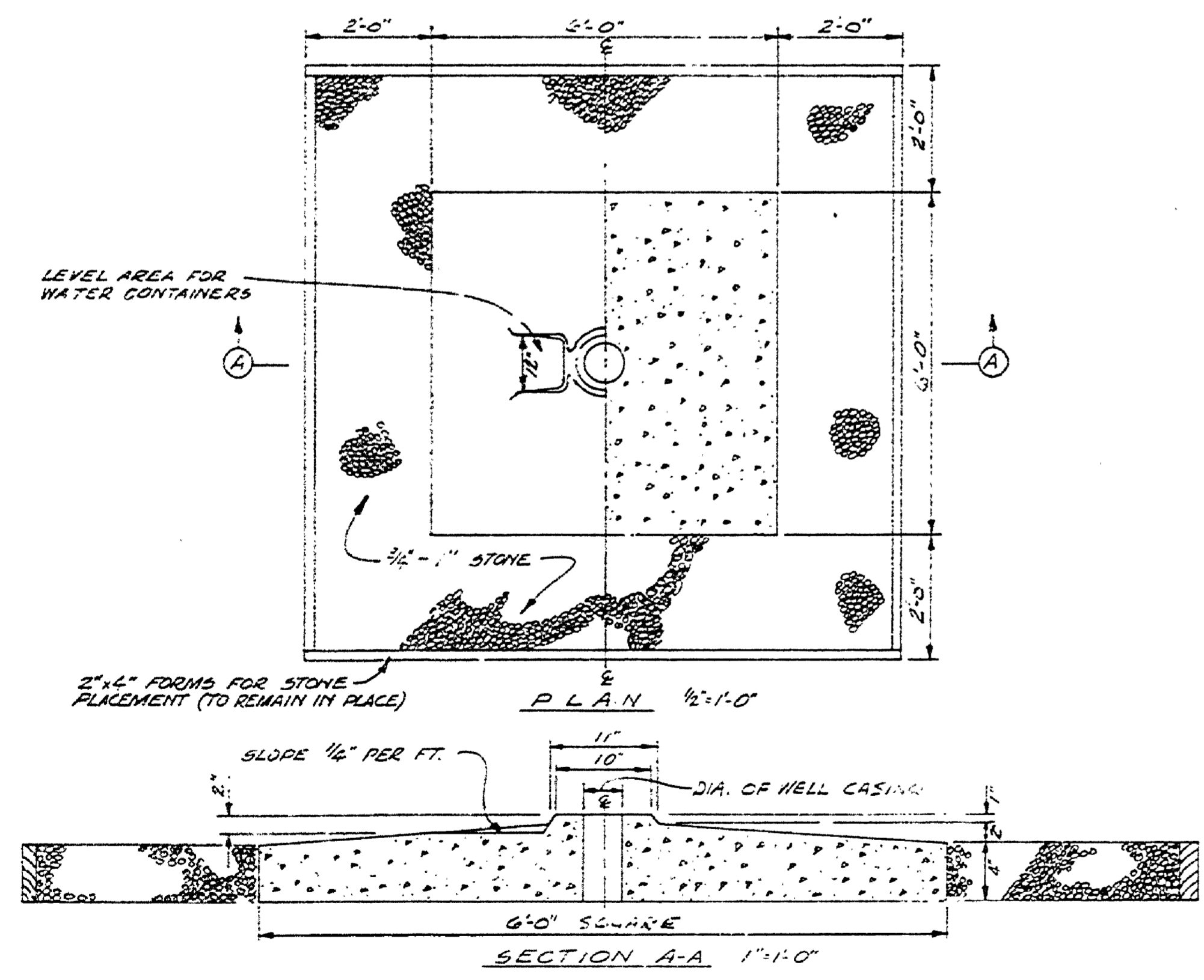


SLEEPY HOLLOW STATE PARK

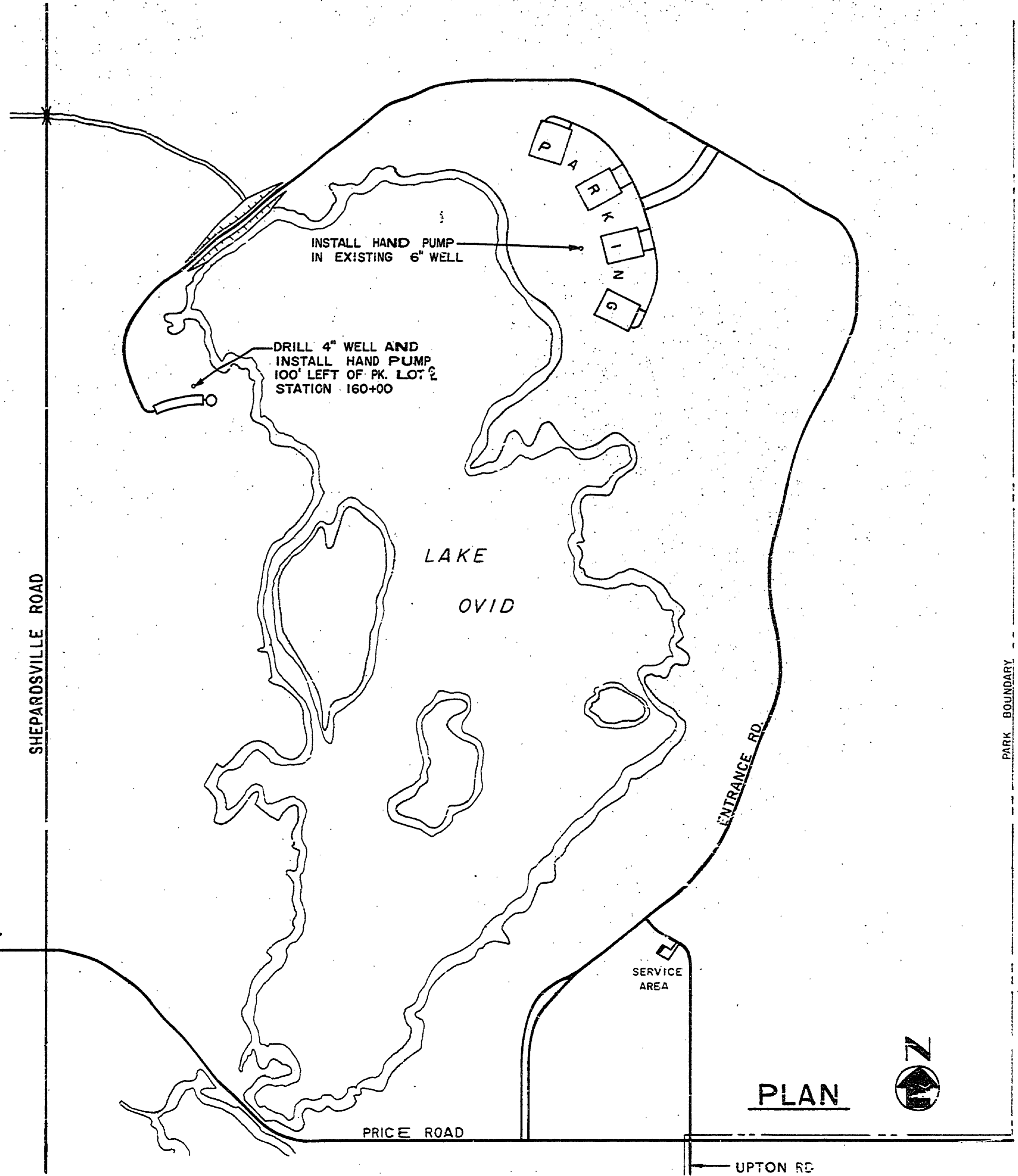
CONSTRUCTION PLANS FOR WELL AND TWO HAND PUMPS PROJECT NO. 24-1763



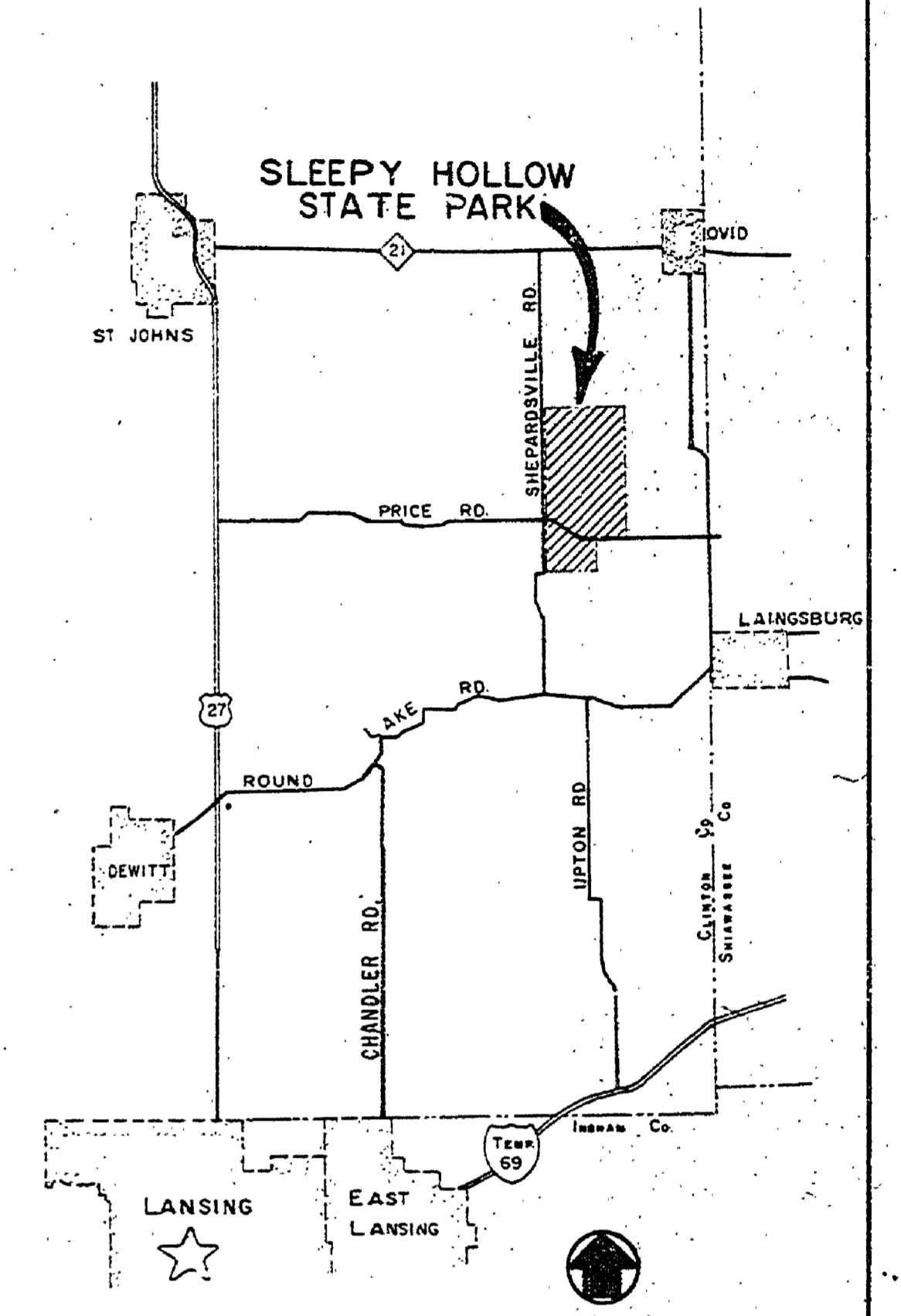
SECTION OF 4" WELL AND PUMP
USE SAME PUMP INSTALLATION
IN EXISTING 6" WELL



CONCRETE WELL PLATFORM
APPLIES BOTH PUMP INSTALLATIONS



PLAN



LOCATION MAP

BUILDING COMMITTEE APPROVAL	
BY: _____	DATE: _____
RECOMMENDED FOR APPROVAL: <i>William C. Runk</i> 2-18-76	
ENGINEER IN CHARGE OF ARCHITECTURAL SUPERVISOR, DATE	
RECOMMENDED FOR APPROVAL: _____	
PROGRAM AND PLAN SUPERVISOR, DATE	
DIVISION / REGION APPROVAL	
BY: <i>William C. Runk</i> 2-18-76	DATE: _____
DIVISION CHIEF / REGIONAL MANAGER	
ENGINEERING DIVISION	
APPROVED: <i>William C. Runk</i> 2-18-76	DATE: _____
CHIEF ENGINEER	

SURVEYED BY DESIGNED BY R. HAEUSLER	DRAWN BY B. BOYCE CHECKED BY _____	2-76 DATE	NO. 1 DATE	BY	REVISIONS	NO. 3 DATE	BY	REVISIONS	MICHIGAN DEPARTMENT OF NATURAL RESOURCES	PLAN SHEET SHEET TITLE	SLEEPY HOLLOW STATE PARK AREA OR PARK WELL AND TWO HAND PUMPS PROJECT	PROJECT NO. 24-1763 SHEET 1 OF 1	PLAN NO. E-106
--	---------------------------------------	--------------	---------------	----	-----------	---------------	----	-----------	---	---------------------------	--	-------------------------------------	----------------