

CURVE #2
 $\Delta = 34^{\circ}16'45''$
 $D = 4'$
 $R = 1432.40'$
 $T = 441.75'$
 $L = 856.98'$
 $E = 68.51'$
 $PC = 25+63.63$
 $PI = 30+05.38$
 $PT = 34+20.61$

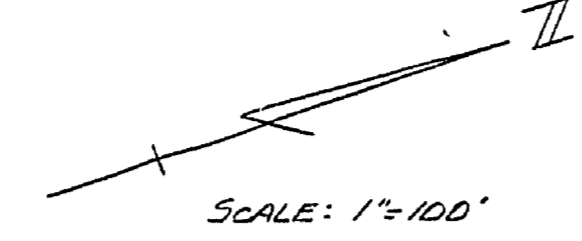
BM #13 ELEV 809.44
 PC, NUT TAG IN N. ROOT
 27" HICKORY, 284' ET
 STA 37+00

CURVE #3A
 $\Delta = 50^{\circ}00'$
 $D = 12^{\circ}30'$
 $R = 459.37'$
 $T = 213.74'$
 $L = 400.00'$
 $E = 47.39'$
 $PC = 40+51.62$
 $PI = 42+65.36$
 $PT = 44+51.62$

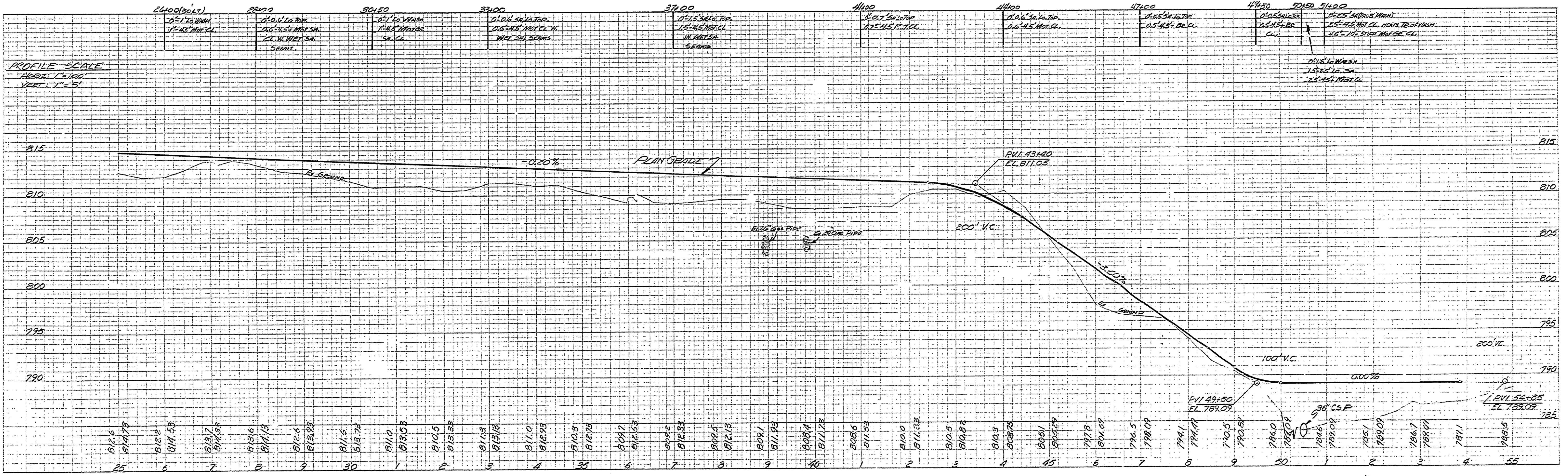
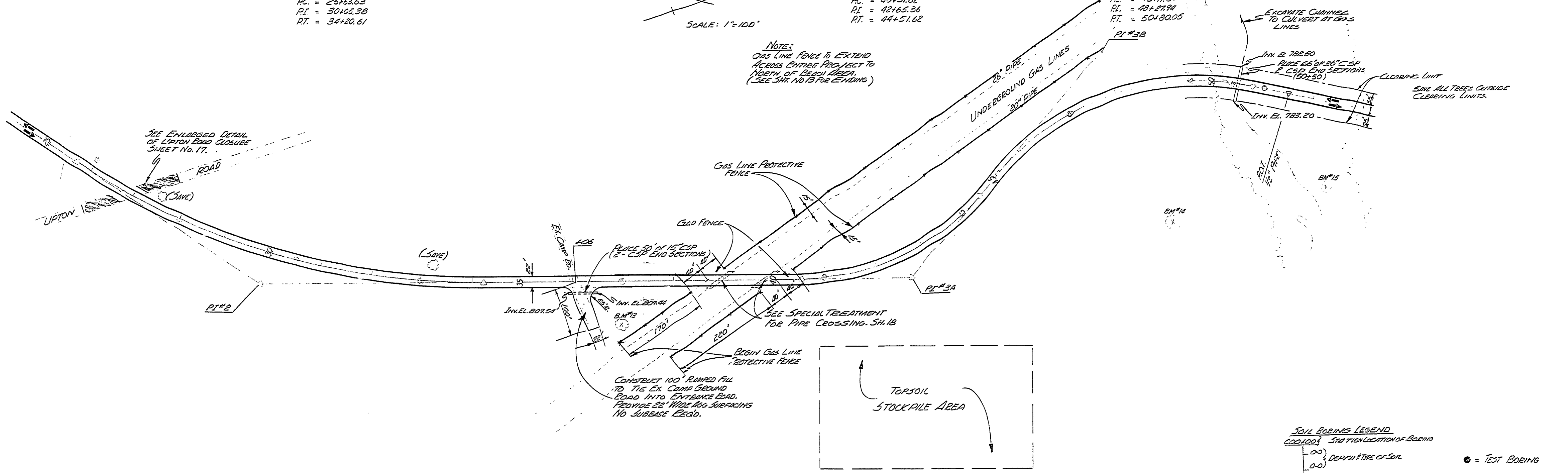
CURVE #3B
 $\Delta = 62^{\circ}30'$
 $D = 11'$
 $R = 520.87'$
 $T = 316.07'$
 $L = 568.18'$
 $E = 88.40'$
 $PC = 45+11.87$
 $PI = 49+29.94$
 $PT = 50+30.05$

BM #14 ELEV 807.71
 PC, SPIKE E. SIDE OF
 20" HICKORY, 284' ET
 OF STA 48+50.

BM #15 ELEV 783.82
 PC, NUT TAG IN N. ROOT
 15" MAPLE, 170' ET OF
 STA 52+52.



NOTE:
 GAS LINE FENCE IS EXTEND
 ALONG EXISTING ROAD TO
 NORTH OF BEACH CREEK
 (SEE SHEET NO. 13 FOR ENDING)



SURVEYED BY <i>D. BISSSELL</i>	DRAWN BY <i>LEMMON</i>	12-73	NO. DATE BY	REVISIONS	NO. DATE BY	REVISIONS	MICHIGAN DEPARTMENT OF NATURAL RESOURCES	ENTRANCE ROAD PLAN & PROFILE	SHEET NO. 4 OF 25 FOR PROJECT NO. 21-9540	SLEEPY HOLLOW STATE PARK SHEET 4 OF 25 PLAN NO. F-101
DESIGNED BY <i>R. WHEISLER</i>	CHECKED BY <i>DATE</i>	DATE	1.		3.					
			2.		4.					