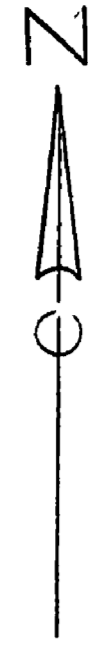
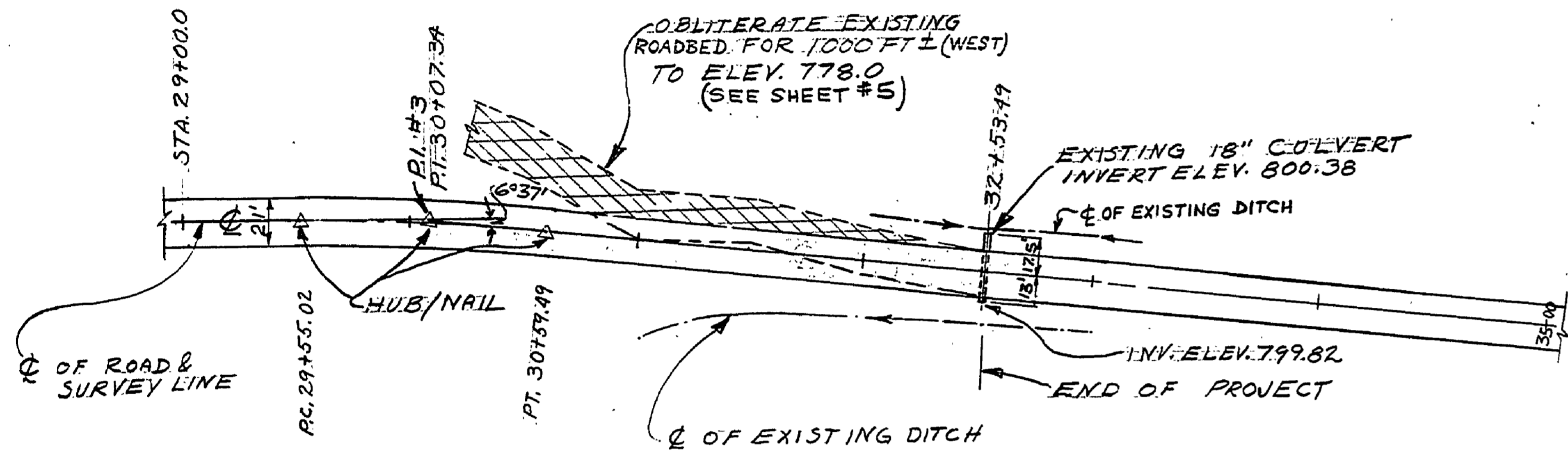


WITNESSES TO PT. #3 HUB.  
 N 60° W 59.5' 24" W ALUM. SPIKE.  
 S 42° E 125.55' POWER POLE SPIKE.

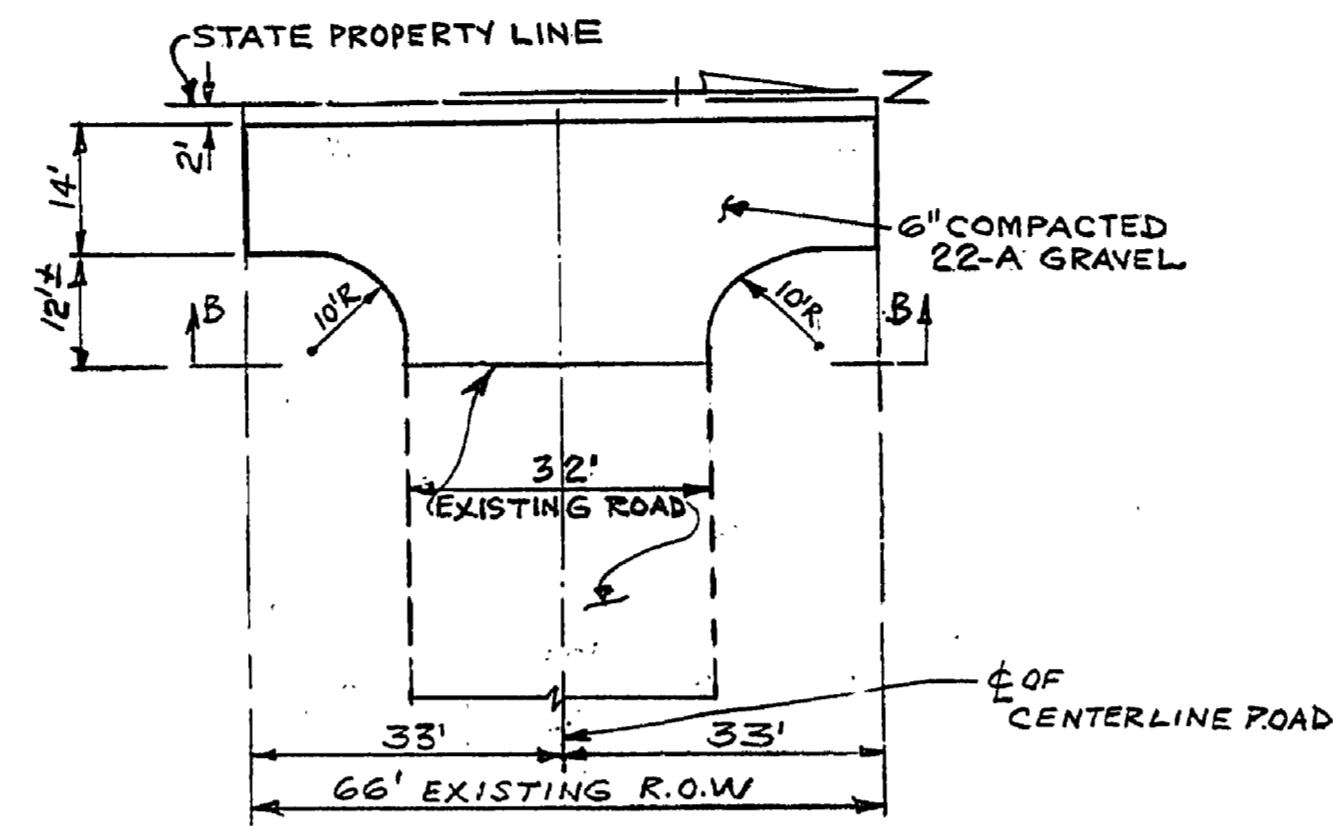


CURVE #3 DATA  
 Δ - 6° 37' RT.  
 D - 6° 20'  
 T - 52.32'  
 R - 904.67'  
 P - 104.47'  
 M - 1.52'  
 P.D.M. - 29+55.02  
 P.T. - 30+07.34  
 T.T. - 30+59.49

WITNESSES TO END OF SURVEY  
 @ STA. 32+53.49  
 73.0' TO HEADWALL TO THE RIGHT  
 175' TO HEADWALL TO THE LEFT  
 TBM #144R71, 0.65 MILE ESE ALONG PRICE RD.  
 FROM CORNER SECTIONS 3, 4, 9 & 10  
 T&L, R.I.W. 193' SOUTH OF PRICE RD. IN NORTH  
 SIDE OF A POWER POLE WITH TAG #35387,  
 SCS DISK & LAC BOLT. ELEV. 800.85

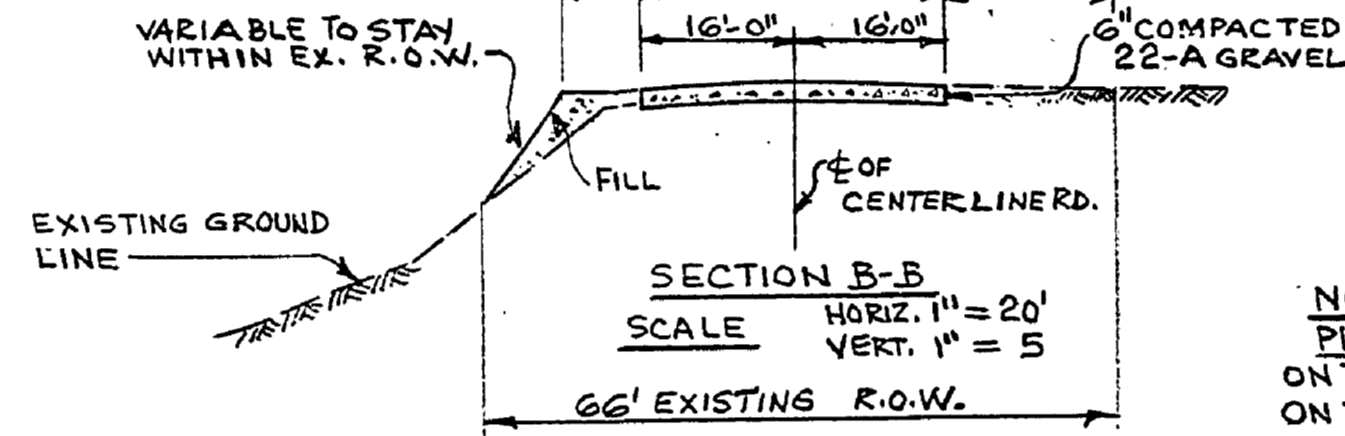


PLAN  
 SCALE: 1" = 50'



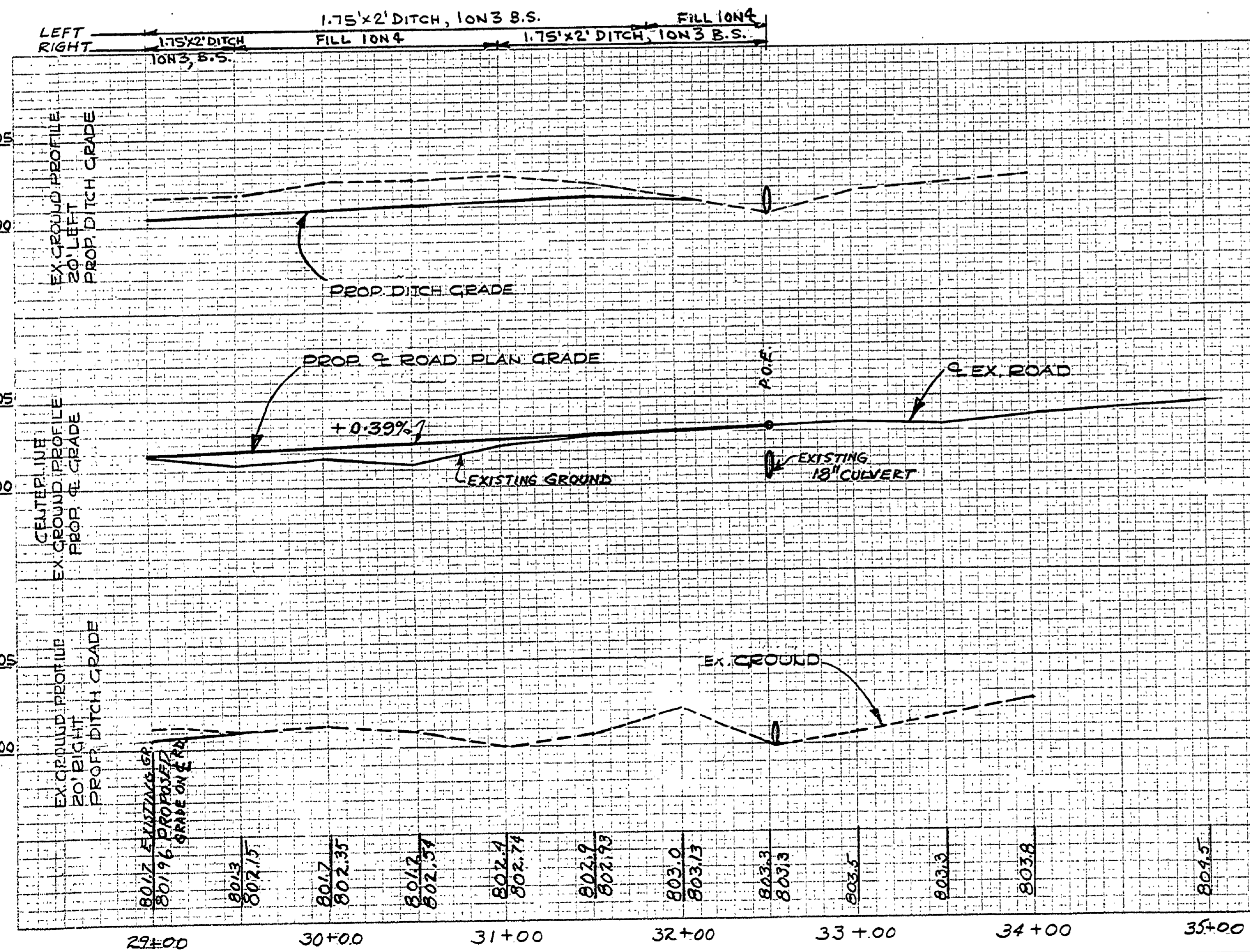
PLAN  
 SCALE: 1" = 20'

TURNAROUND AT WESTERLY  
 END OF CENTERLINE ROAD



SECTION B-B  
 SCALE: HORIZ. 1" = 20'  
 VERT. 1" = 5'

NOTE  
 PLACE STEEL BEAM GUARD RAILS  
 ON THE LEFT SIDE BEGINNING STA. 13+10 ENDING STA. 17+50  
 ON THE RIGHT SIDE BEGINNING STA. 13+10 ENDING STA. 17+50  
 TOTAL LENGTH WITH THE END SHOES 882 LIN. FT.



PROFILE  
 SCALE: HORIZ. 1" = 50'  
 VERT. 1" = 5'

SURVEYED BY A. PETRAVICIUS	6/71	DRAWN BY M. STEVENS	7/71	NO.	DATE	BY	REVISIONS	NO.	DATE	BY	REVISIONS
DESIGNED BY A. PETRAVICIUS	7/71	CHECKED BY	DATE	1.				3.			
	DATE			2.				4.			