

WITNESSES TO PT. "A" 3/4" PIPE @ E RD
 S 2° W - 19.45' - 18" MAPLE, SPIKE
 N 70° E - 33.20' - 12" HICKORY, SPIKE

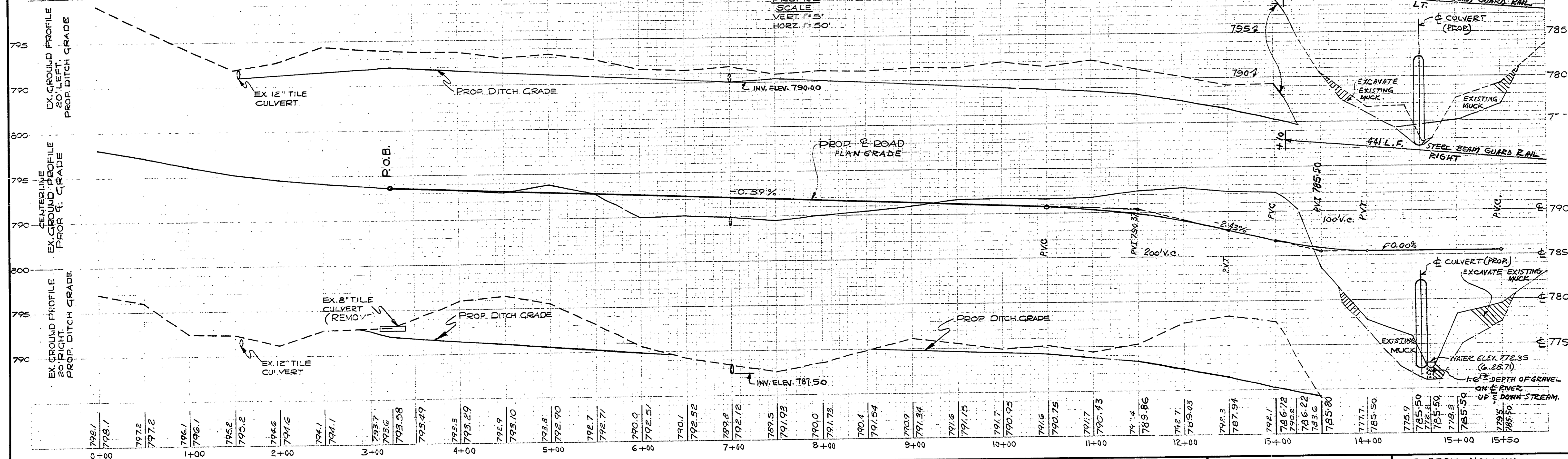
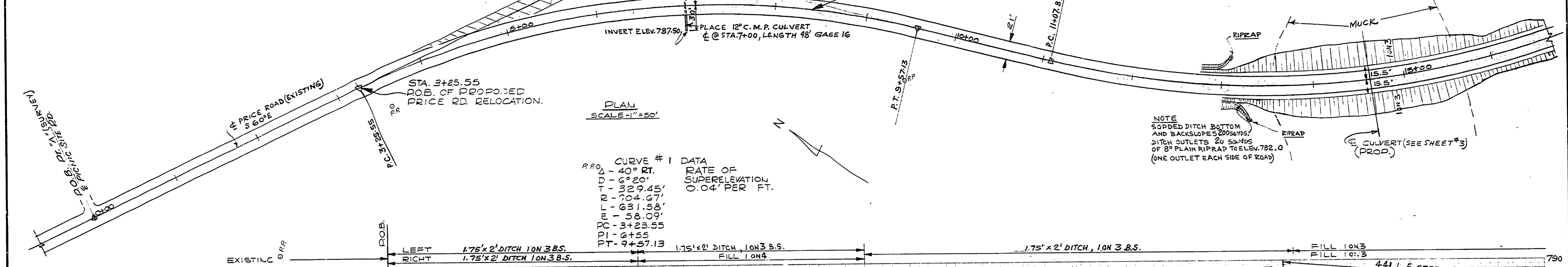
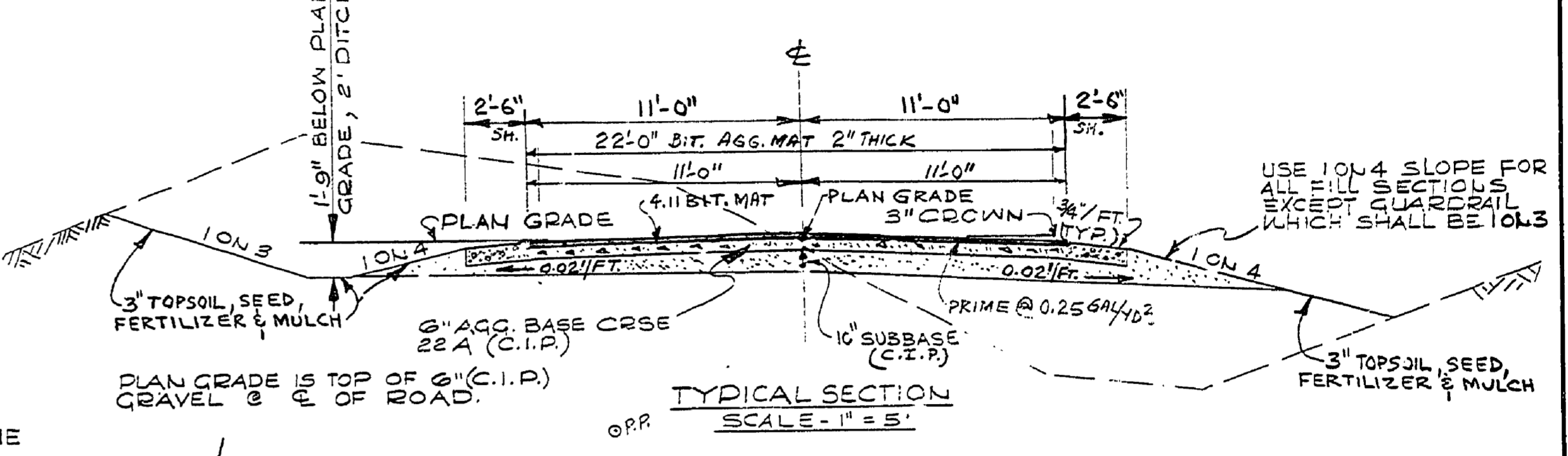
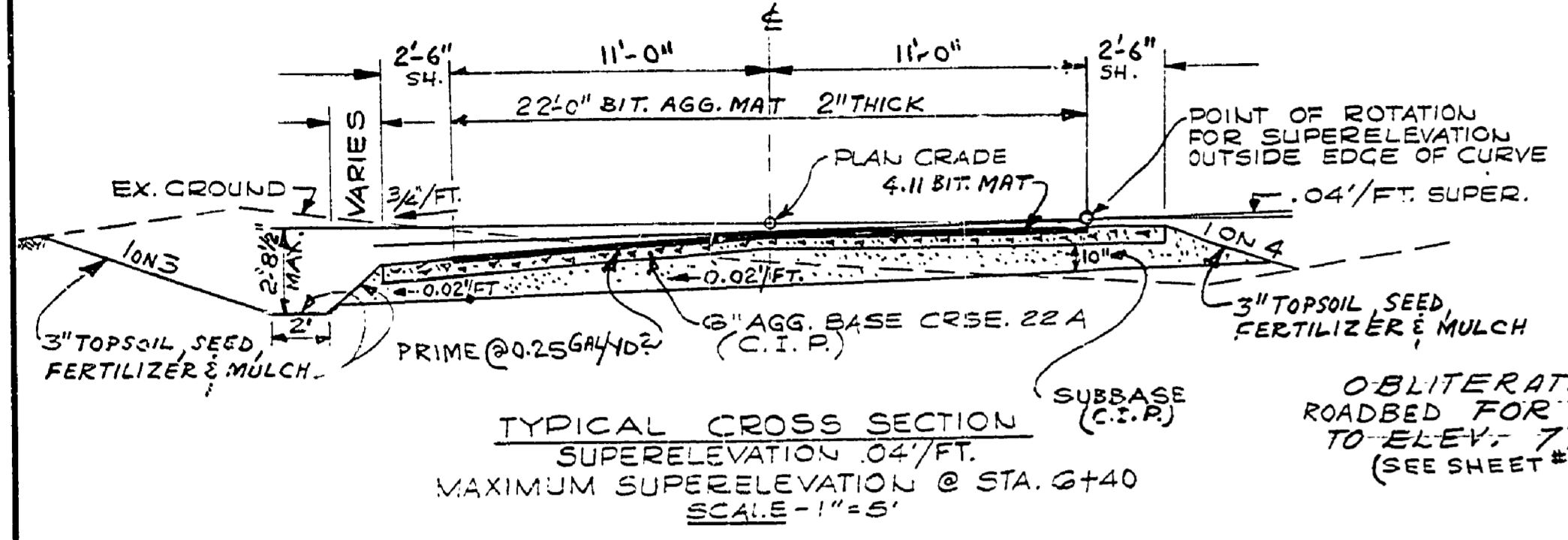
WITNESSES TO PC @ STA. 3+25.55 SPIKE
 IN E OF PRICE ROAD.
 S 12° E - 17.53' OF NE 12" CONC. CULVERT
 N 75° W - 76.38' - 12" HICKORY, SPIKE

WITNESSES TO P.I. #1 @ STA. 6+55
 1" PIPE @ E PRICE ROAD.
 S 45° E - 93.60' - HICKORY, SPIKE & BM #5
 N 86° W - 42.75' - HICKORY, SPIKE

WITNESSES TO HUB IN E OF ROAD &
 P.T. @ STA. 9+57.13
 S 80° E - 31.17' - 5" PINE TREE, SPIKE
 S 72° W - 60.65' - POWER POLE, SPIKE

WITNESSES TO HUB IN E OF ROAD
 & PC @ STA. 11+07.87
 S 4° W - 23.07' - 6" CHERRY, SPIKE
 N 49° E - 66.20' - DEAD APPLE, SPIKE

BM #5 - PK. NAIL & TAG IN NW ROOT
 18" SHAG BARK HICKORY - 25' S E PRICE RD.
 75' E FROM CLOSEST HICKORY - .15 MI. CULVERT
 50' S OF U.S.G.S. WELL # 3 .32 MI. FROM
 SHEPARDVILLE RD. ELEV. 793.72



SURVEYED BY A. PETRAVICIUS	6, 1971	DRAWN BY M. STEVENS	7/71	NO. DATE BY REVISIONS	NO. DATE BY REVISIONS	MICHIGAN DEPARTMENT OF CONSERVATION	PRICE ROAD RELOCATION PLAN AND PROFILE	SHEET NO. 2 OF 6 FOR PROJECT NO. 24-0216	SLEEPY HOLLOW STATE PARK SHEET 2 OF 6 PLAN NO. E-100
DESIGNED BY A. PETRAVICIUS	7, 1971	CHECKED BY	DATE	1. 8/2/72 M.P. LOWPEED ROAD GRADES, BETWEEN STA. 10+50 & 19+50	3.				