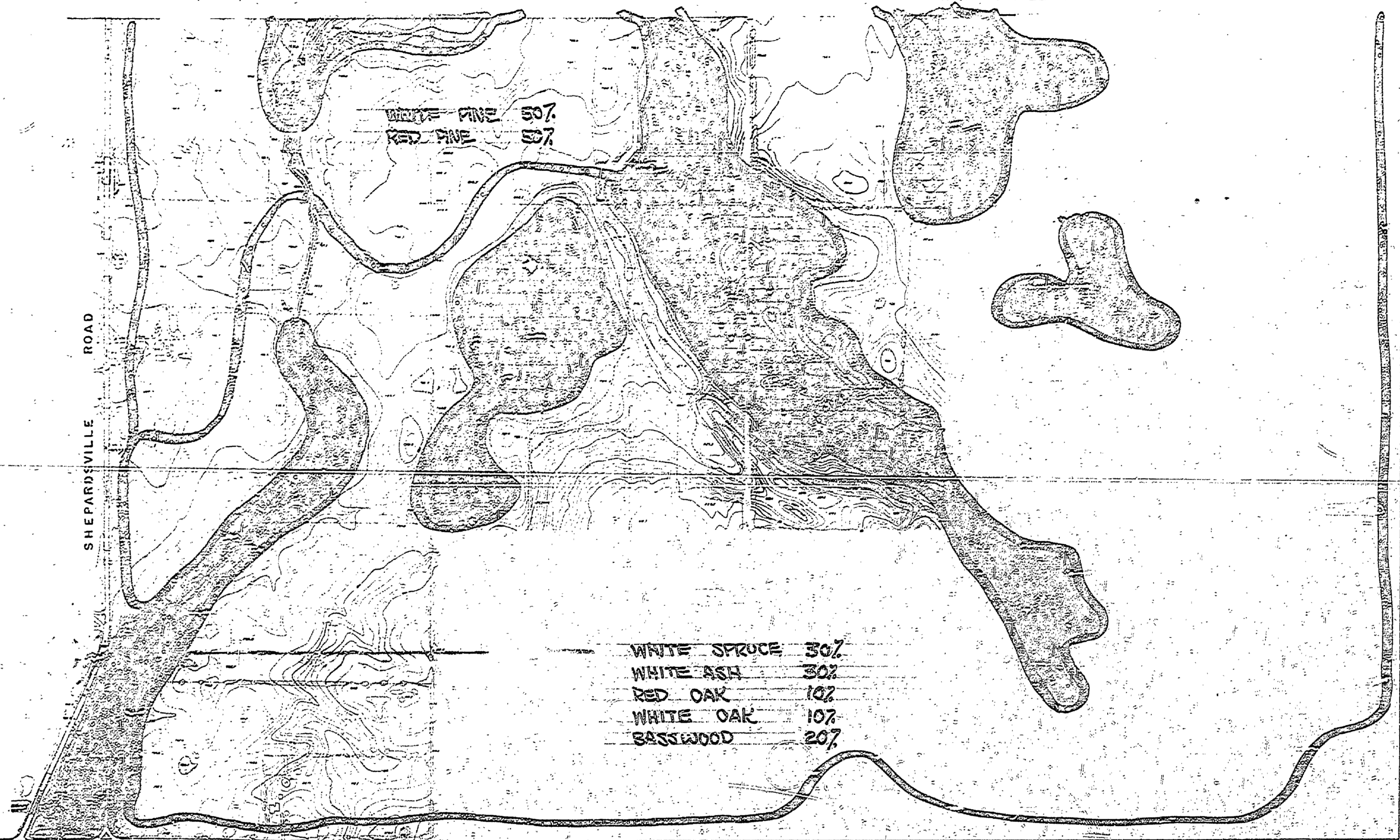
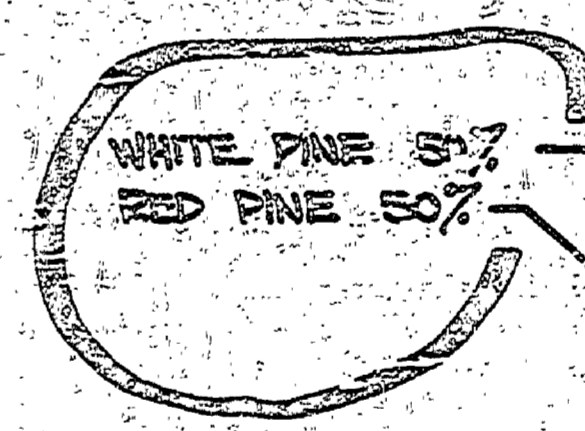


MATCH TO SHEET 2

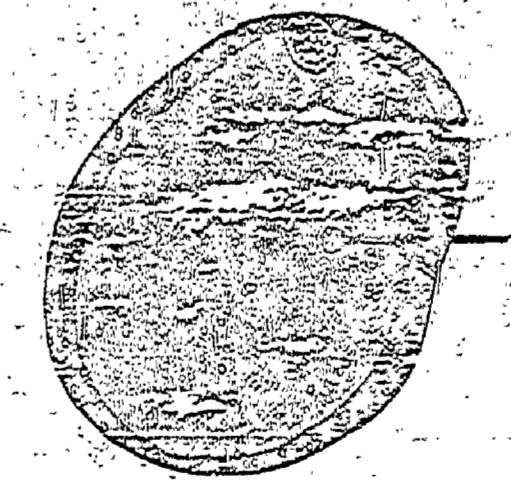


WHITE PINE 50%  
 RED PINE 50%  
 WHITE SPRUCE 30%  
 WHITE ASH 30%  
 RED OAK 10%  
 WHITE OAK 10%  
 BASSWOOD 20%

LEGEND



APPROXIMATELY 1/2 OF THE TREES PLANTED WITHIN THIS GROUP WILL BE WHITE PINE  
 APPROXIMATELY 1/2 WILL BE RED PINE



AREA DETERMINED TO BE UNDESIDABLE FOR PLANTING BECAUSE OF UNSUITABLE SOIL CONDITIONS, FUTURE PARK DEVELOPMENT REQUIRING EXTENSIVE GRADING, A GAS PIPE LINE, OR LAND WITHIN THE PROPOSED LAKE LEVEL.

REVIEWED BY: Jim M... 8-26-70  
 IN CHARGE - PARK DESIGN - DATE  
 APPROVED BY: Robert O. Wodge Jr. 9-17-70  
 CHIEF - PARKS DIVISION - DATE

SCALE 1" = 300'  
 NORTH

| SURVEYED BY         | DRAWN BY | NO. | DATE | BY | REVISIONS | NO. | DATE | BY | REVISIONS |
|---------------------|----------|-----|------|----|-----------|-----|------|----|-----------|
| DESIGNED BY KESSLER | 3/70     | 1.  |      |    |           | 3.  |      |    |           |
| CHECKED BY          | DATE     | 2.  |      |    |           | 4.  |      |    |           |