

DATE	BY	NO.	DATE	BY
11/21/54	J.M.L.	1	11/21/54	J.M.L.
12/25/54	J.M.L.	2	12/25/54	J.M.L.
1/25/55	J.M.L.	3	1/25/55	J.M.L.
2/25/55	J.M.L.	4	2/25/55	J.M.L.
3/25/55	J.M.L.	5	3/25/55	J.M.L.
4/25/55	J.M.L.	6	4/25/55	J.M.L.

REVIEWED BY SECTIONS  
 ARCHITECTURAL  
 ENGINEERING  
 LANDSCAPE

APPROVED BY  
 ASSISTANT CHIEF IN CHARGE  
 OF DESIGN

DATE  
 11/21/54  
 12/25/54  
 1/25/55  
 2/25/55  
 3/25/55  
 4/25/55

DATE  
 11/21/54  
 12/25/54  
 1/25/55  
 2/25/55  
 3/25/55  
 4/25/55

DATE  
 11/21/54  
 12/25/54  
 1/25/55  
 2/25/55  
 3/25/55  
 4/25/55

DATE  
 11/21/54  
 12/25/54  
 1/25/55  
 2/25/55  
 3/25/55  
 4/25/55

**LEGEND**

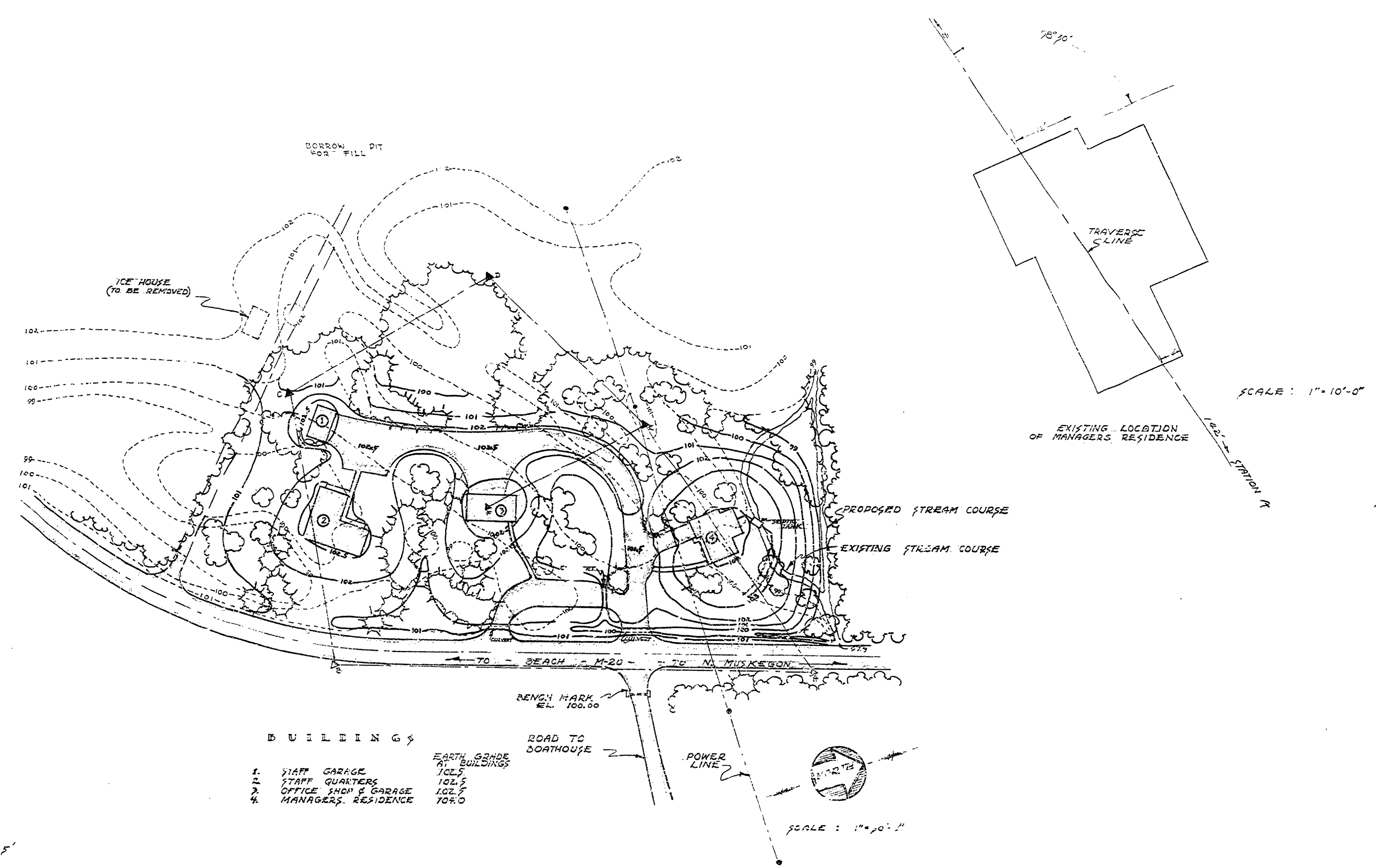
- EXISTING CONTOURS
- - - PROPOSED CONTOURS
- TRAVERSE LINES
- ▲ TRAVERSE STATIONS
- POWER LINES

NOTE: GROUND WATER ELEVATION: 98.5'

**BUILDINGS**

- 1. STAFF GARAGE 102.5
- 2. STAFF QUARTERS 102.5
- 3. OFFICE SHED & GARAGE 102.5
- 4. MANAGERS RESIDENCE 102.0

EARTH GRADE AT BUILDINGS



MICHIGAN  
 DEPARTMENT OF CONSERVATION  
 PARKS AND RECREATION DIVISION

MICHIGAN STATE PARK  
 SERVICE GROUP  
 GRADING & LAYOUT PLAN

SHEET  
 NO. 1  
 OF 1

PLAN NO.  
 L-103A

R-6