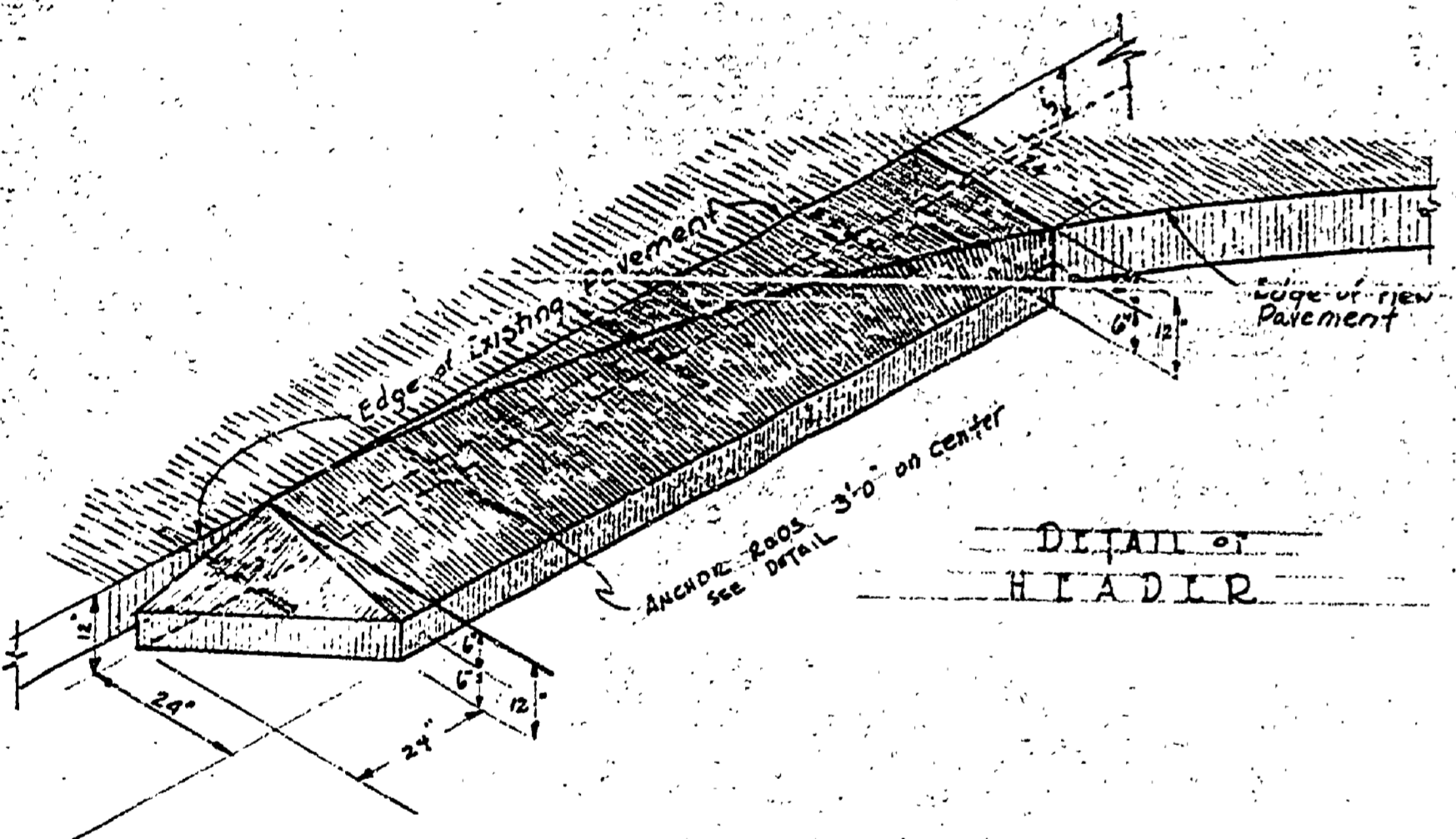
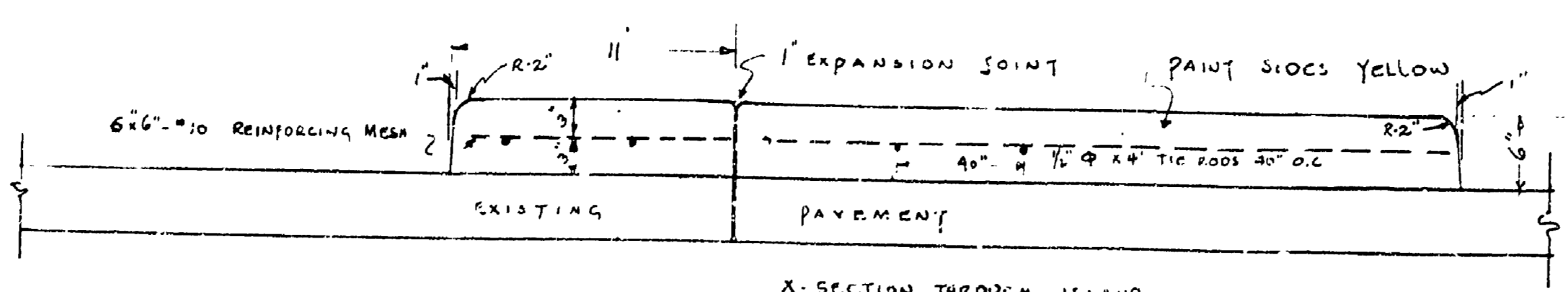


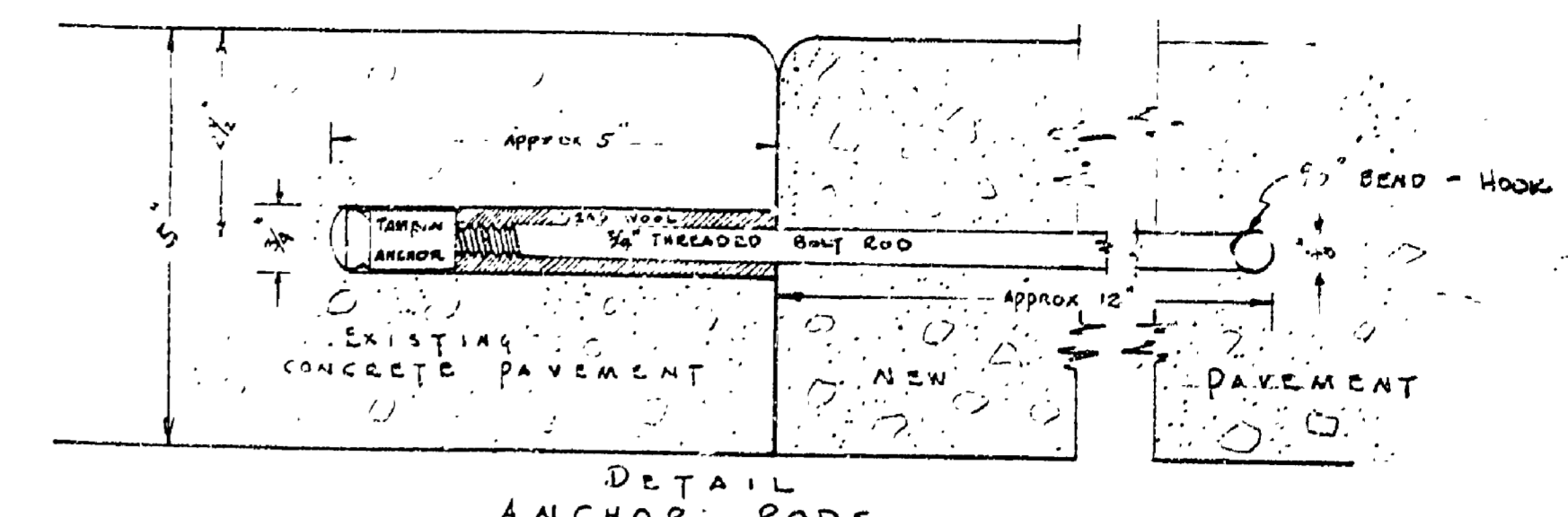
PLOT PLAN  
SHOWING PROPOSED  
WIDENING IN SOLID  
BLOCKS



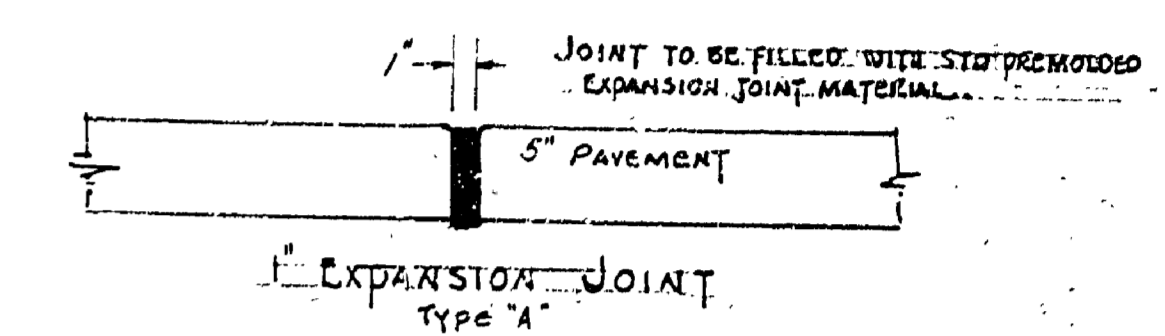
DETAIL OF  
HEADER



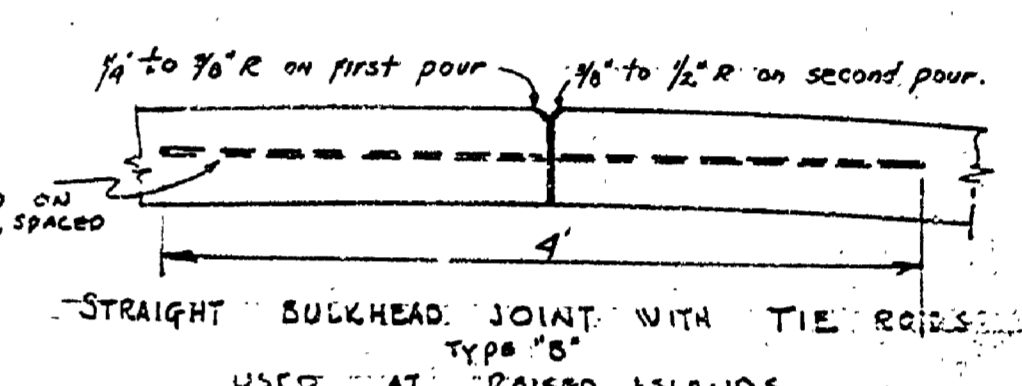
X-SECTION THROUGH ISLAND  
B-B'  
SCALE: 1" = 10' HORIZ.  
1" = 5' VERT.



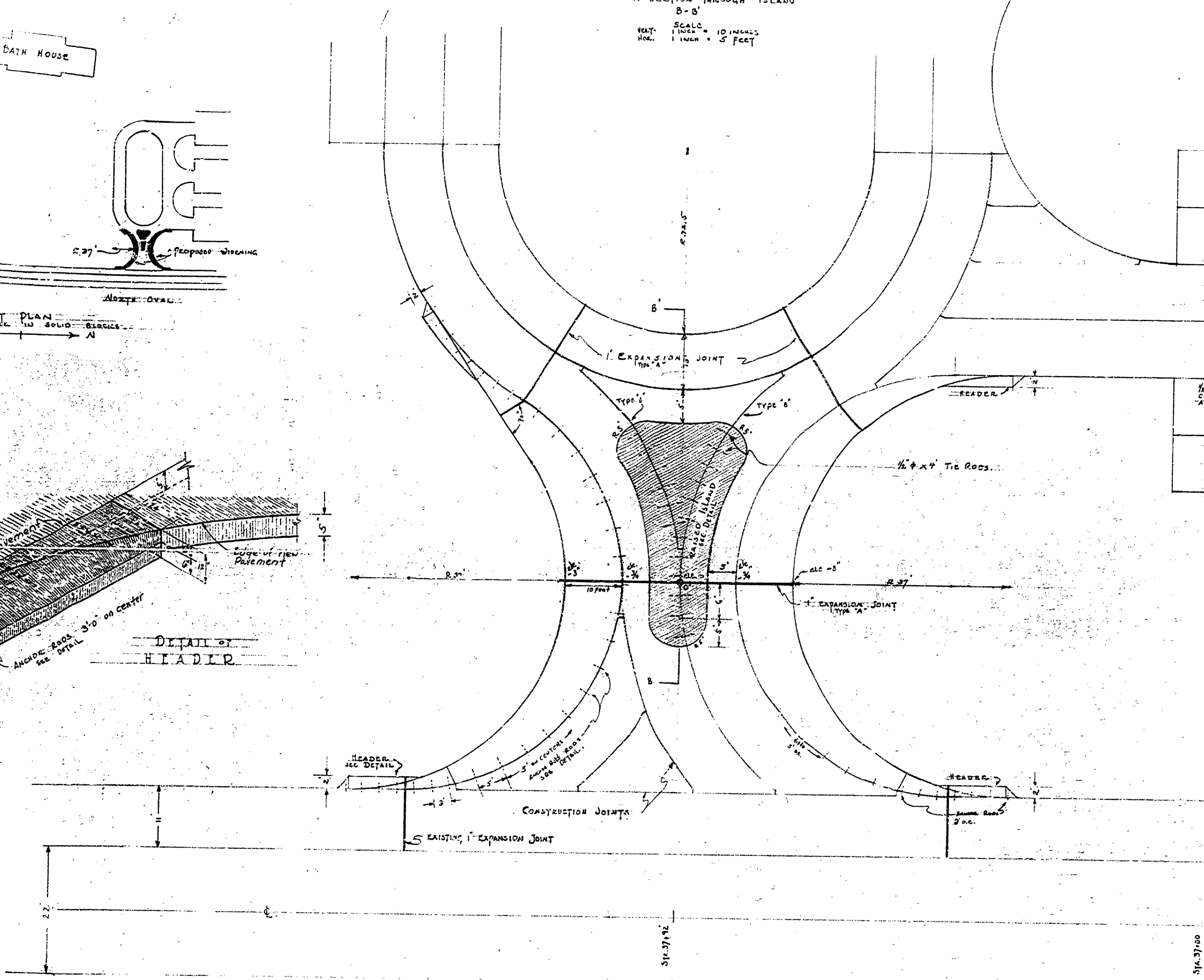
DETAIL  
ANCHOR RODS  
SCALE 1/2" = 1'



EXPANSION JOINT  
TYPE "A"



STRAIGHT BUCKHEAD JOINT WITH TIE RODS  
TYPE "B"  
USED AT RAISED ISLANDS.



PLAN  
NORTH OVAL  
SCALE 1" = 10'-0"

NOTES: EXPANSION JOINTS AND CONSTRUCTION JOINTS IN THE RAISED ISLANDS ARE TO BE PLACED DIRECTLY OVER THOSE FOUND IN EXISTING PAVEMENT BELOW.  
ALL STAKING OF GRADES & ALIGNMENT TO BE DONE BY SPONSOR'S ENGINEER.  
THE SOUTH OVAL ENTRANCE IS TO BE WIDENED IN THE SAME MANNER AS THE NORTH OVAL ENTRANCE. RADIUS OF PROPOSED WIDENING STRIP AT SOUTH ENTRANCE IS 36.5 FEET (SEE PLOT PLAN).  
IN DRILLING HOLE INTO EXISTING PAVEMENT TO RECEIVE TAMPING ANCHOR & ROD, EXTREME CARE MUST BE TAKEN TO PREVENT CHIPPING OR SPOILING OFF OF TOP OR BOTTOM PAVEMENT SURFACES. A 3/4" STAIR DRILL IS RECOMMENDED AND HOLES DRILLED SLOWLY.  
PLACE 6' x 6" REINFORCING MESH THROUGHOUT RAISED ISLANDS, HOWEVER A BREAK SHOULD BE LEFT AT THE 1" EXPANSION JOINT.  
BEFORE ISLANDS ARE POURED, CLEAN SURFACE OF EXISTING PAVEMENT BELOW THOROUGHLY, DAMPEN WELL, AND PAINT WITH A CEMENT GROUT.

MICHIGAN DEPARTMENT OF CONSERVATION PARKS DIVISION		
DESIGNED BY J.R. SOO	BATHHOUSE PARKING AREA	PLAN NO.
DRAWN BY R. BOO	APPROACH WIDENING	SHEET 100-1
CHECKED BY	MUSKEGON STATE PARK	DATE 9-9-41
APPROVED	<i>[Signature]</i> Division Chief - Parks	DATE 9-24-41
APPROVED		DATE