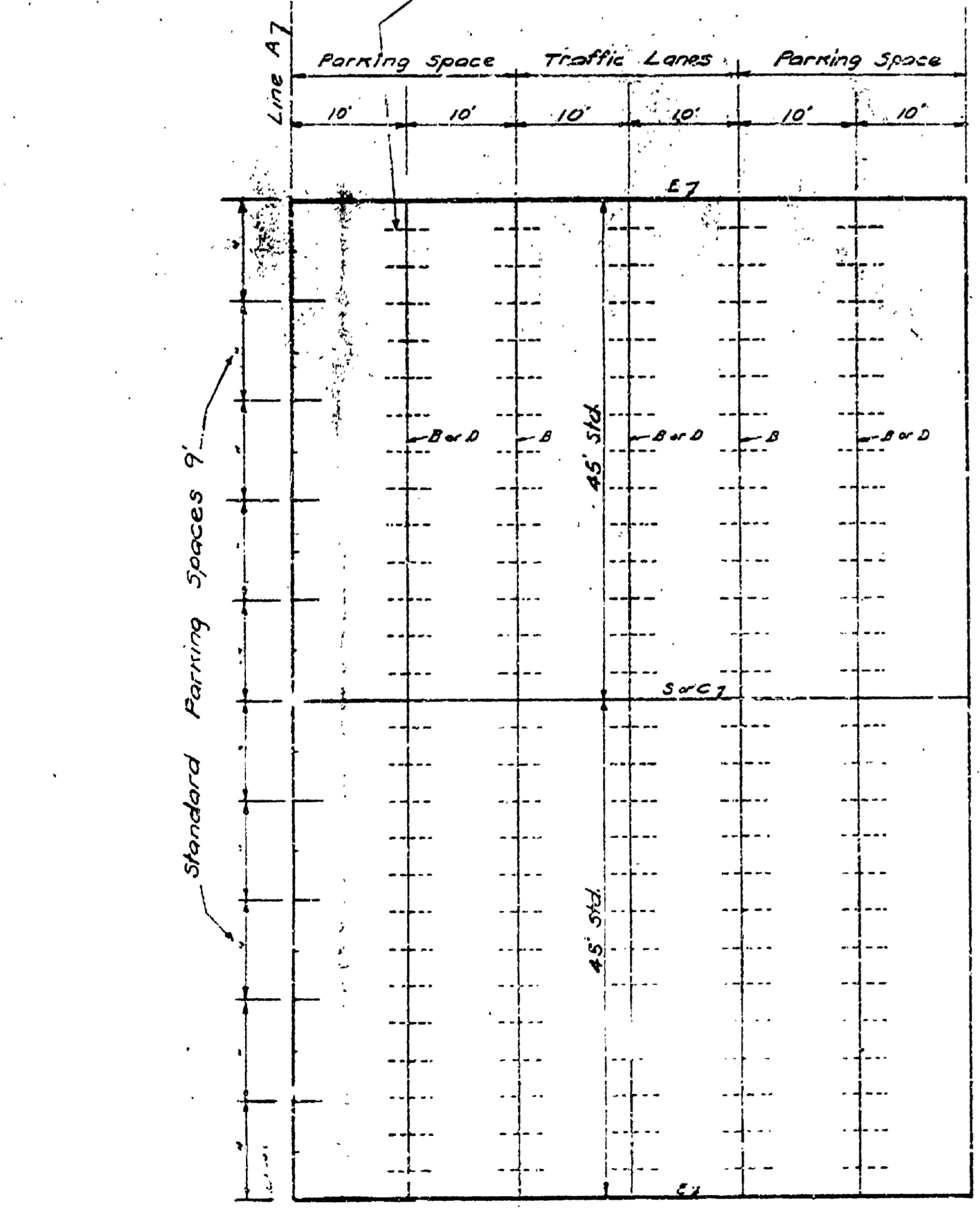
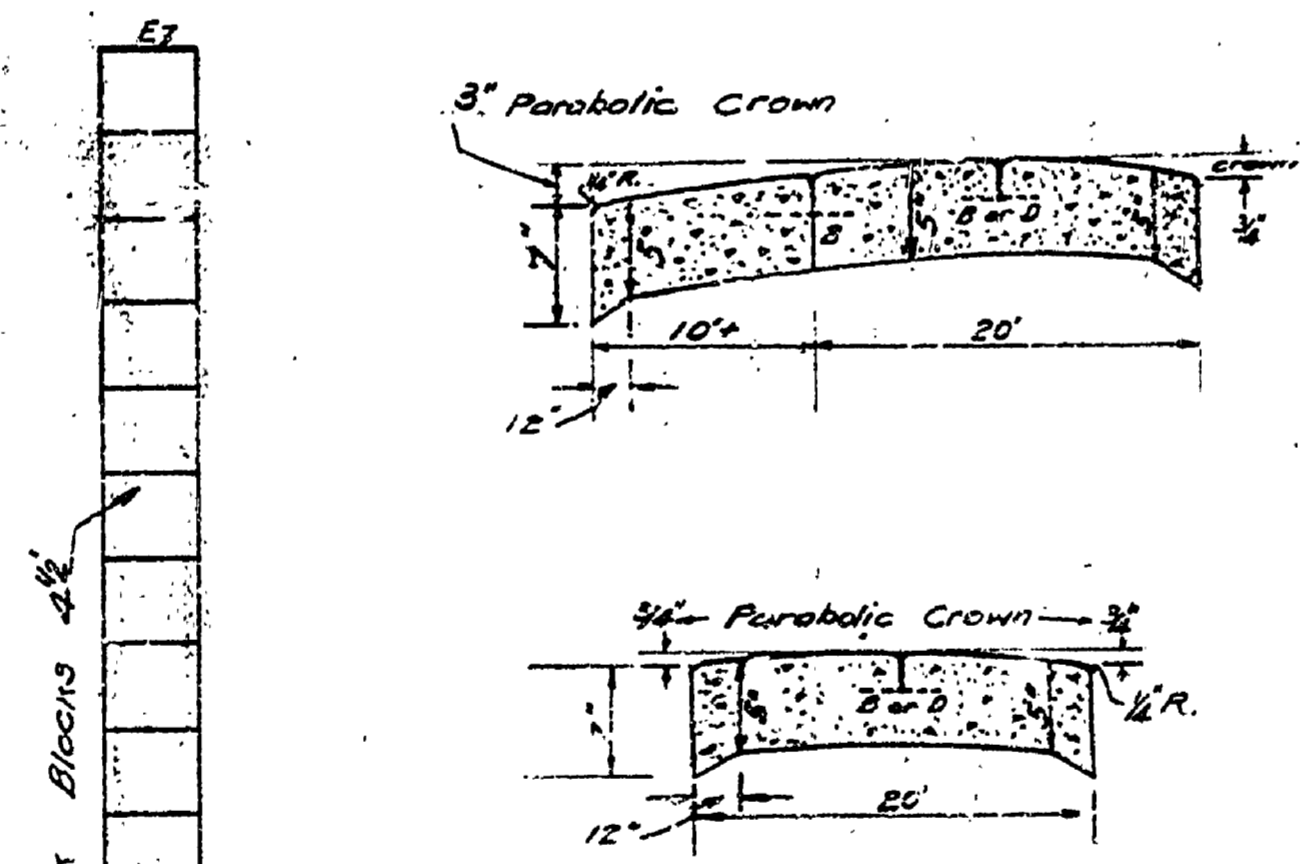


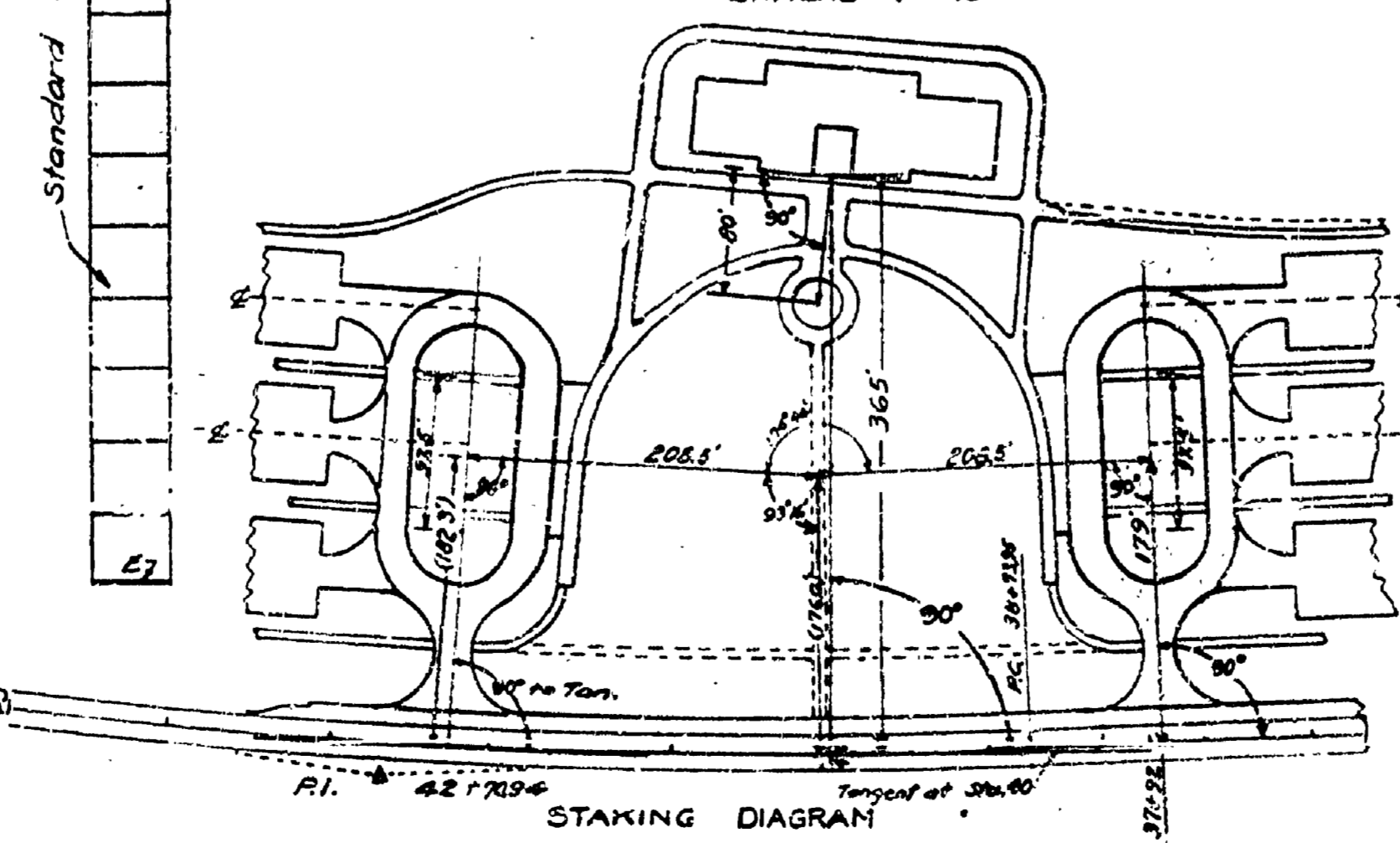
TYPICAL CROSS-SECTION FOR PARKING AREA
 SCALES — HORIZONTAL 1 inch = 10 ft
 VERTICAL 1 inch = 10 inches



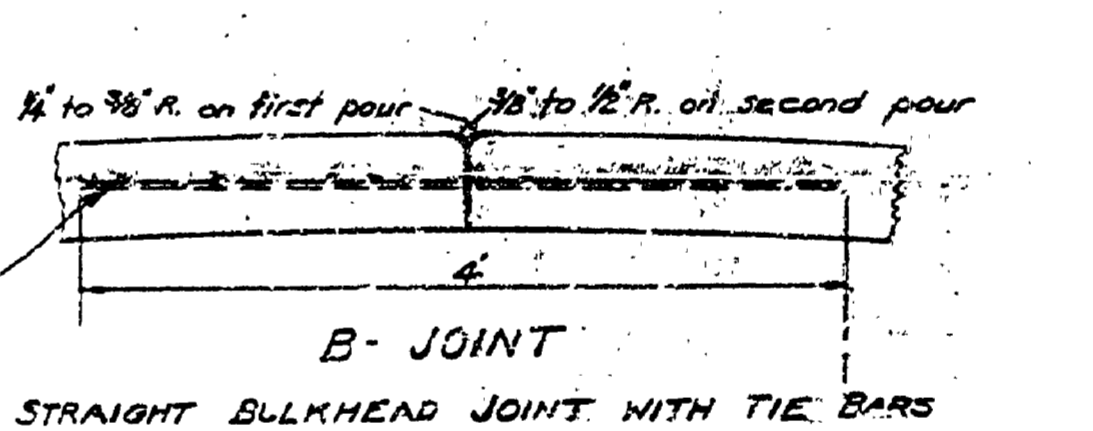
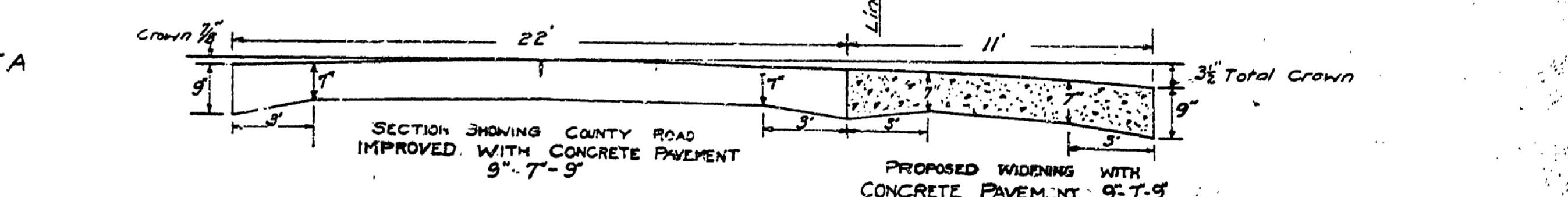
PLAN
 Scale 1" = 10'



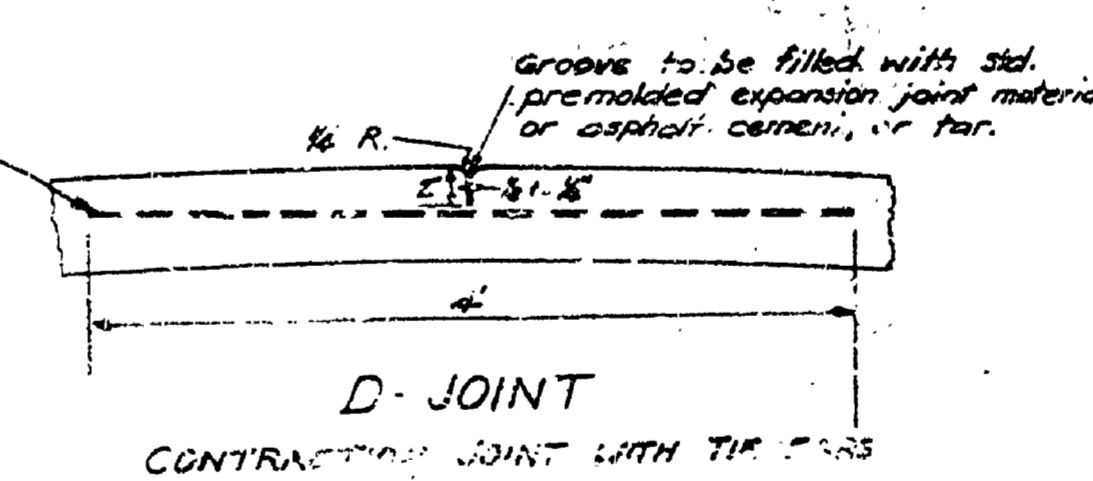
TYPICAL CROSS-SECTIONS FOR APPROACHES
 SCALES — HORIZONTAL 1" = 10'
 VERTICAL 1" = 10"



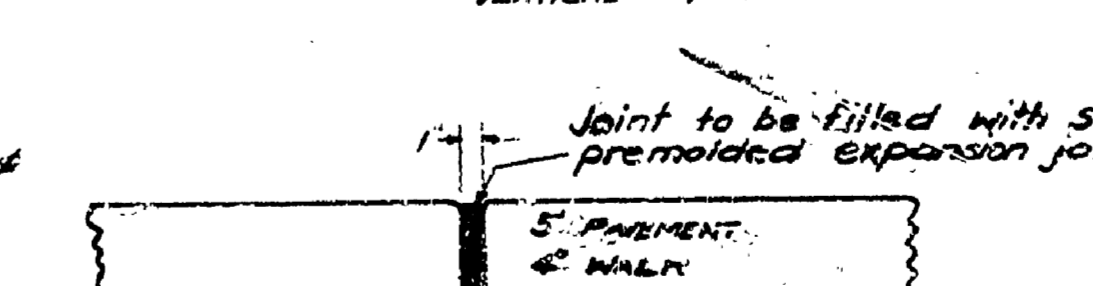
STAKING DIAGRAM



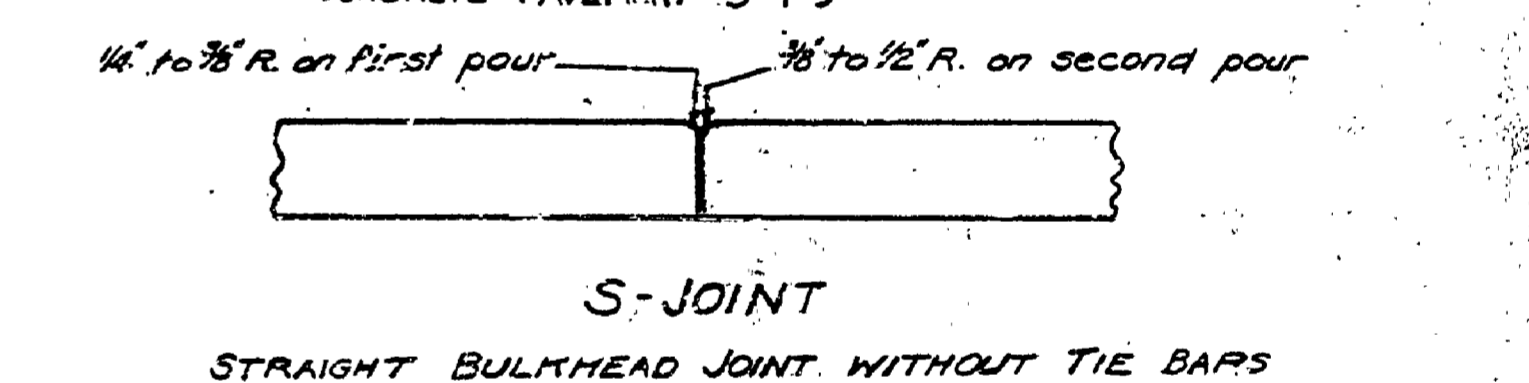
B-JOINT
 STRAIGHT BULKHEAD JOINT WITH TIE BARS



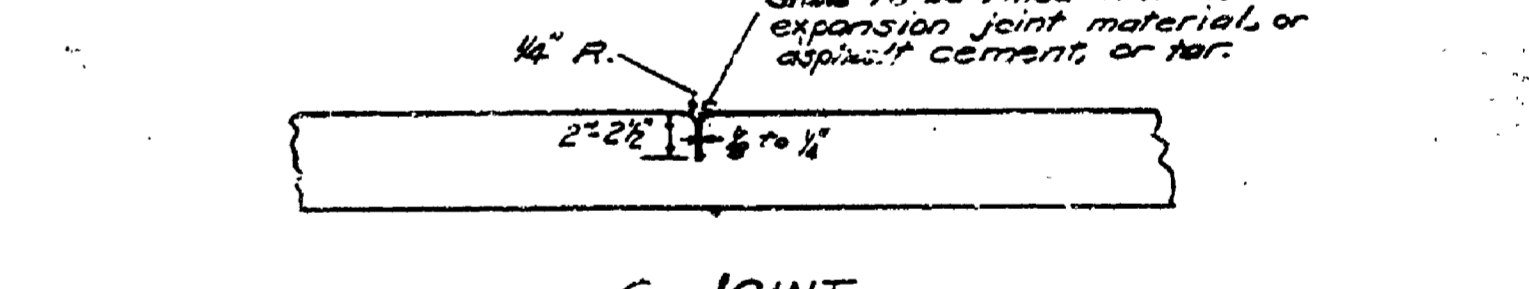
D-JOINT
 CONTRACTION JOINT WITH TIE BARS



E-JOINT
 1" EXPANSION JOINT
 TRANSVERSE JOINT



S-JOINT
 STRAIGHT BULKHEAD JOINT WITHOUT TIE BARS



G-JOINT
 CONTRACTION JOINT WITHOUT TIE BARS
 TRANSVERSE JOINTS

Note: Standard Reverse Curves are to be constructed according to State Highway Department Standard Plan E-4-A-110A, modified for SX.
 Standard Curve Headers are to be constructed according to State Highway Department Standard Plan E-4-A-110A.

MICHIGAN
 DEPARTMENT OF CONSERVATION
 PARKS DIVISION

DESIGNED BY C.F.S.	BATHHOUSE PARKING MUSKEGON STATE PARK	PLAN NO.
DRAWN BY L.S.K.		DATE: 3-12-40
CHECKED BY		
APPROVED		DATE
APPROVED		DATE