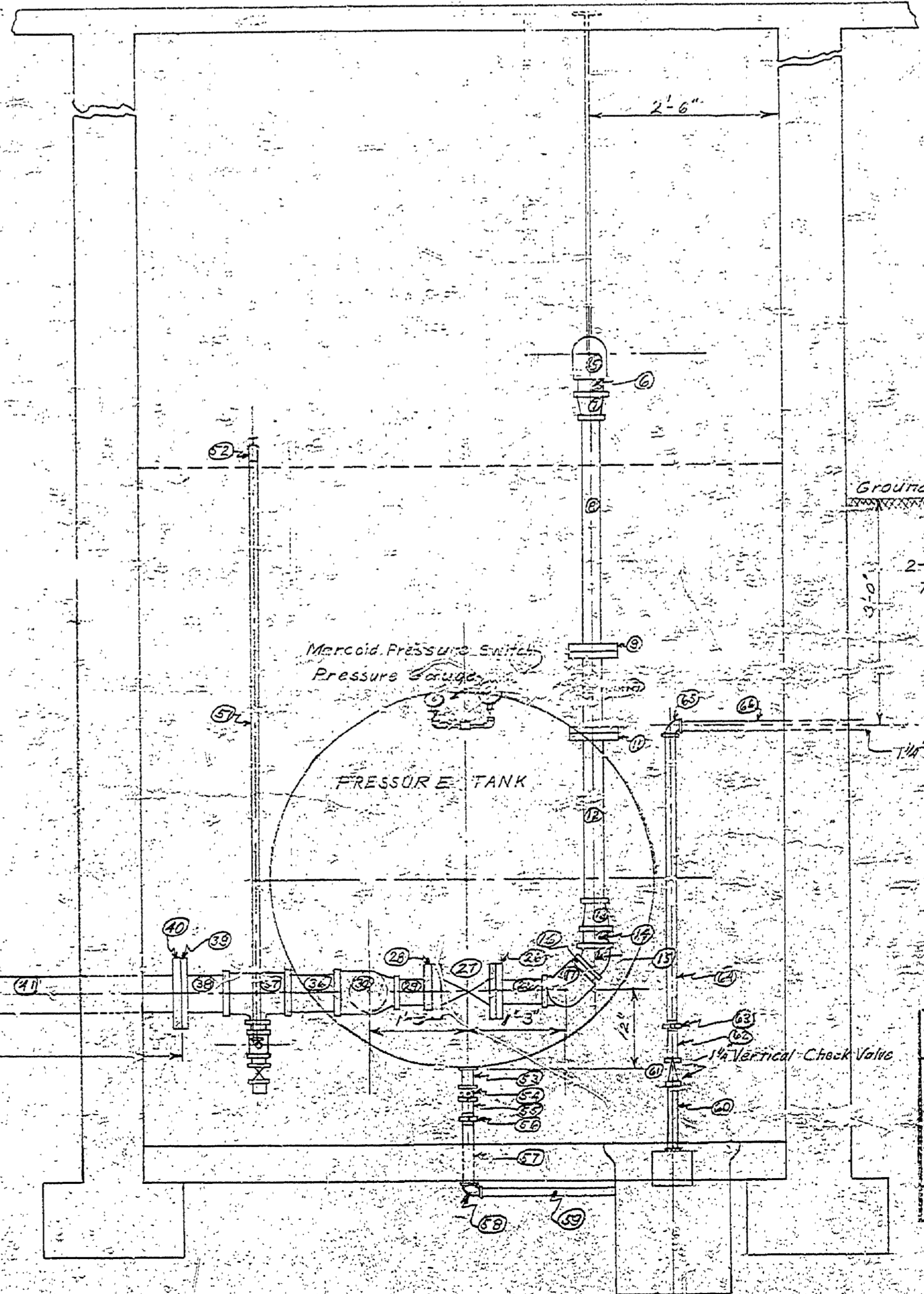
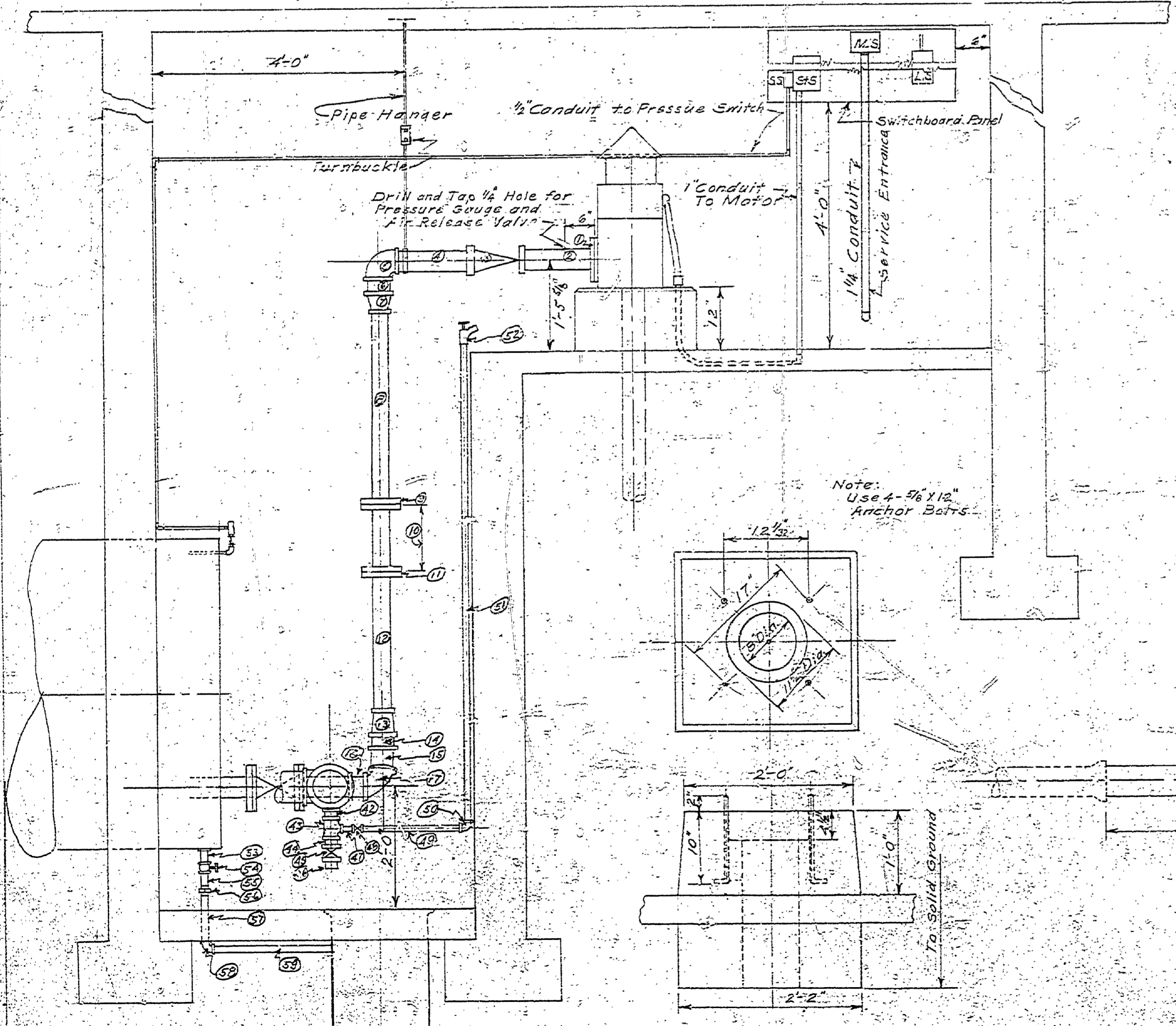
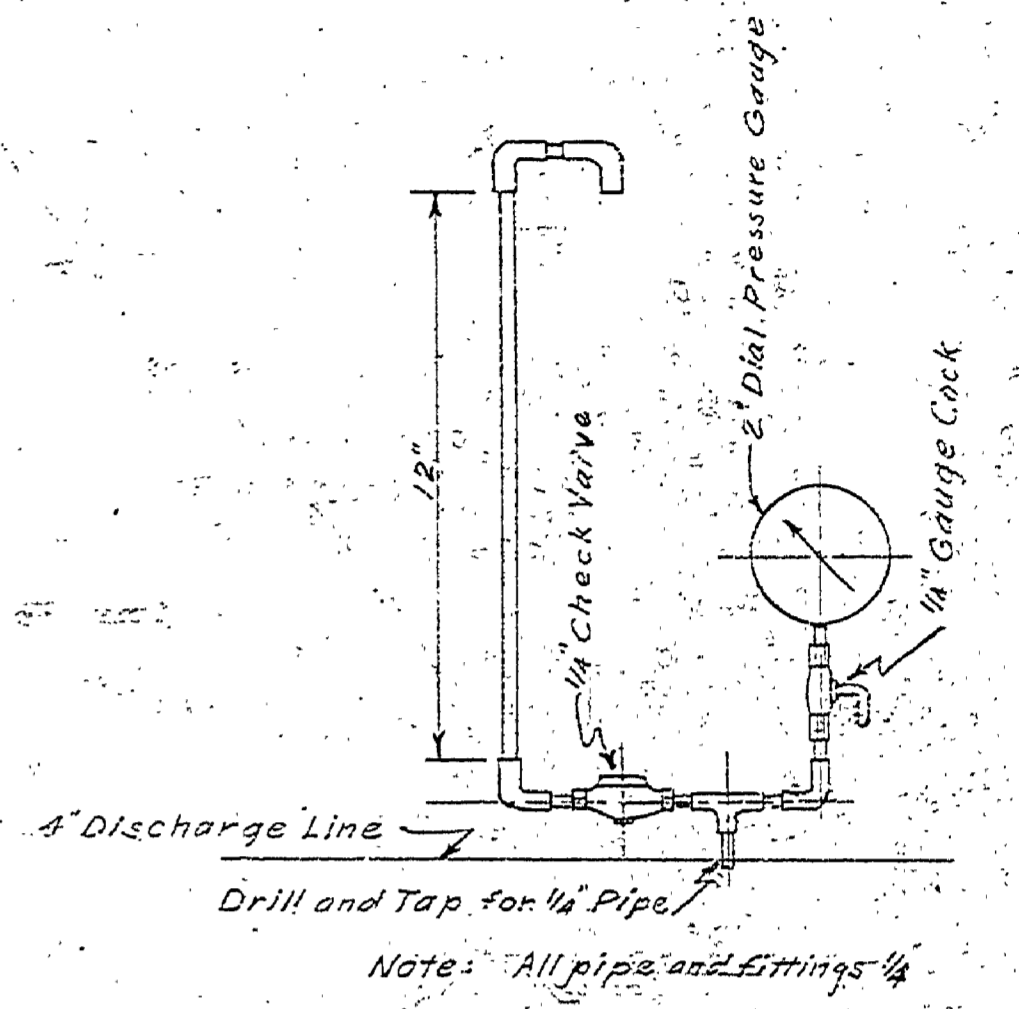


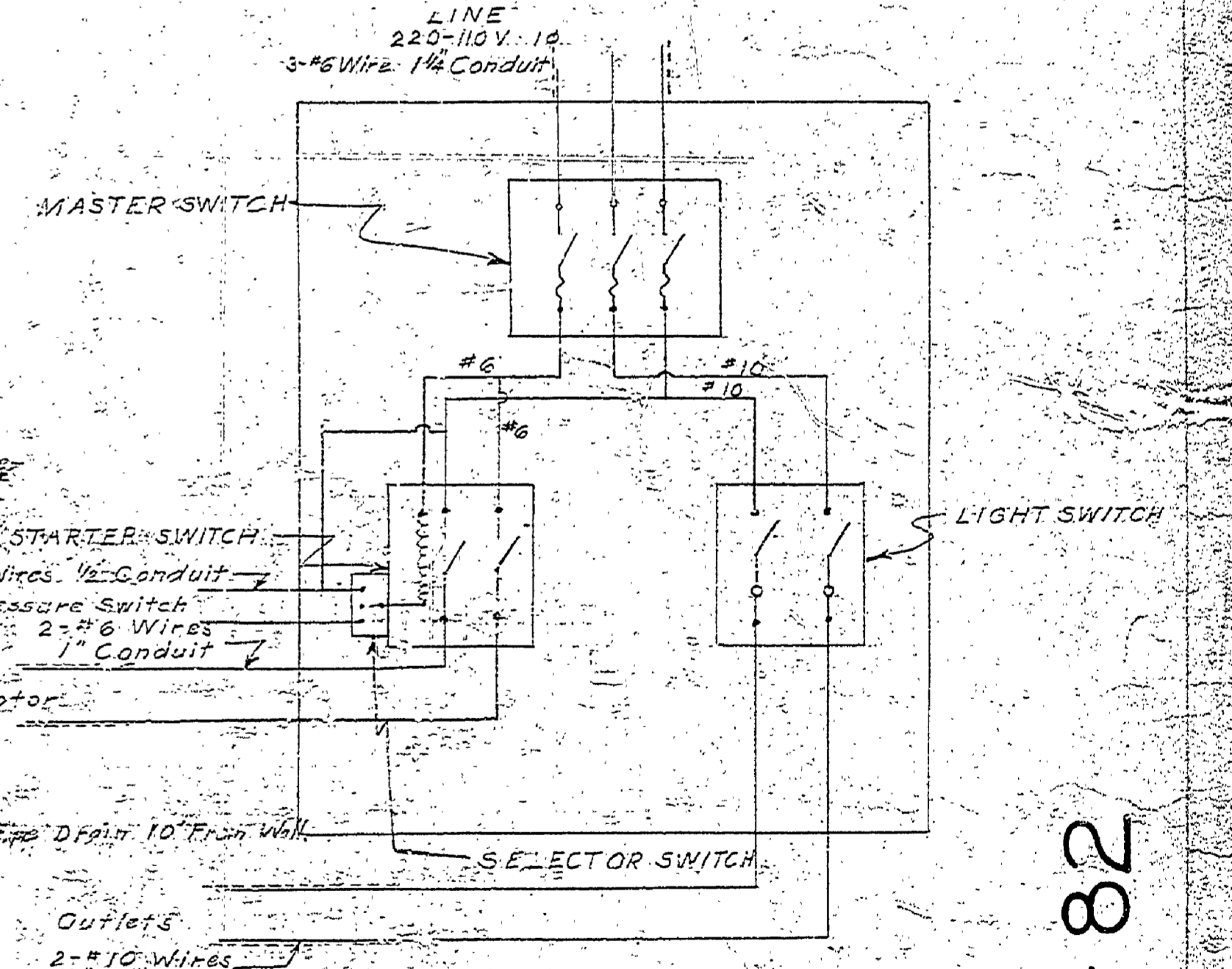
| Item No. | DISCRIPTION                                   | Item No. | DISCRIPTION                                       |
|----------|---|----------|---|
| 1        | 4" Std. Flange on pump                        | 35       | 6" Std. Galv. Pipe Cut to fit on job              |
| 2        | 4" Std. Galv. Pipe thrd. both ends 1'-0" long | 36-38    | 6" Std. Galv. Pipe thrd. both ends 8" long        |
| 3        | 4" Screwed Horizontal check valve             | 37       | 6" x 6" x 2" Std. Reducing Tee                    |
| 4        | 4" Std. Galv. Pipe Cut to fit on job          | 39-40    | 6" Std. screwed Flanges F+D                       |
| 5-17     | 4" Std. Galv. 90° Elbow                       | 41       | 6" Std. Galv. Steel Pipe 6'-0" long               |
| 6-14-18  | 4" Std. Galv. Nipple 4" long                  | 42       | 2" Std. Galv. Nipple 2 1/2" long                  |
| 7-13     | 4" x 3" Galv. Reducer                         | 43       | 2" x 1 1/2" Std. Reducer Tee                      |
| 18       | 3" Std. Galv. Pipe thrd. both ends 3'-0" long | 44       | 3/4" Outside Hexagon Bushing                      |
| 9-11     | 3" Std. Flange F+D                            | 45       | 1 1/4" Brass Gate Valve and Nipple                |
| 10       | 3" Std. Pipe with Flanges 12 3/4" long        | 46       | 1 1/4" Std. Galv. Nipple 2 1/2" long              |
| 12       | 3" Std. Galv. Pipe Cut to fit on job          | 47       | 3/4" Std. Galv. Nipple 2" long                    |
| 15       | 4" Std. Galv. 45° Angle                       | 48       | 3/4" Brass Gate Valve                             |
| 16       | 4" Std. Nipple 2 7/8" long                    | 49-51    | 3/4" Std. Galv. Pipe Cut to fit on job            |
| 19       | 4" Std. Tee screwed                           | 50       | 3/4" Std. Galv. 90° Elbow                         |
| 20       | 4" Std. Galv. Nipple 4" long                  | 52       | 3/4" Silcock for hose connection                  |
| 21-23    | 4" Std. Screwed Flange F+D                    | 53-55    | 2" Std. Galv. Nipples 2 1/2" long                 |
| 22-27    | 4" Flanged Gate Valve                         | 57       | 2" Brass Gate Valve                               |
| 24       | 4" Std. Galv. Pipe Cut to fit on job          | 56       | 2" Female Union                                   |
| 25-29    | 4" Std. Galv. Pipe thrd. both ends 9" long    | 57-59    | 2" Std. Galv. Pipe Cut to fit on job              |
| 26-28    | 4" Std. Flanges F+D                           | 58       | 2" Std. Galv. 90° Elbow                           |
| 30       | 6" x 4" x 6" Std. screwed Tee                 | 60-62    | 1 1/4" Std. Galv. Pipe thrd. both ends 1'-0" long |
| 31       | 6" Std. Nipple 1 1/2" long                    | 61       | 1 1/4" Vertical screwed Brass Check Valve         |
| 32-34    | 6" Std. Flanges F+D                           | 64-66    | 1 1/4" Std. Galv. Pipe Cut to fit on job          |
| 33       | 6" Flanged Gate Valve                         | 63       | 1 1/4" Std. Galv. Female Union                    |
|          |   | 65       | 1 1/4" Std. Galv. 90° Elbow                       |



**SWITCH SPECIFICATION**

To be supplied by State:  
 Master Switch - General purpose Safety Switch, Fused, 2 pole, 220 A.C. 100 amp, Similar to Square D # 862-23  
 Light Switch - General purpose Safety Switch, Fused, 2 pole, 230 V.A.C. 30 amp, Similar to Square D # 99211

To be supplied by Others:  
 Starter Switch - Square D, 230v, 1 1/2-10 H.P.  
 Pressure Switch - Square D # 45-80



Michigan Department of Health  
 Bureau of Engineering  
 EXAMINED AND APPROVED  
 MAY 16 1931  
 J. M. Hendon  
 DIRECTOR  
 CONSTRUCTION PERMIT No. 4291

MICHIGAN DEPARTMENT OF CONSERVATION STATE PARKS DIVISION

Designed by: MUSKEGON STATE PARK  
 Drawn by: E. J. P.  
 Checked by: INSTALLATION PLANS

Prepared and Approved by: Chief of State Parks Division  
 Approved by: \_\_\_\_\_

E-82