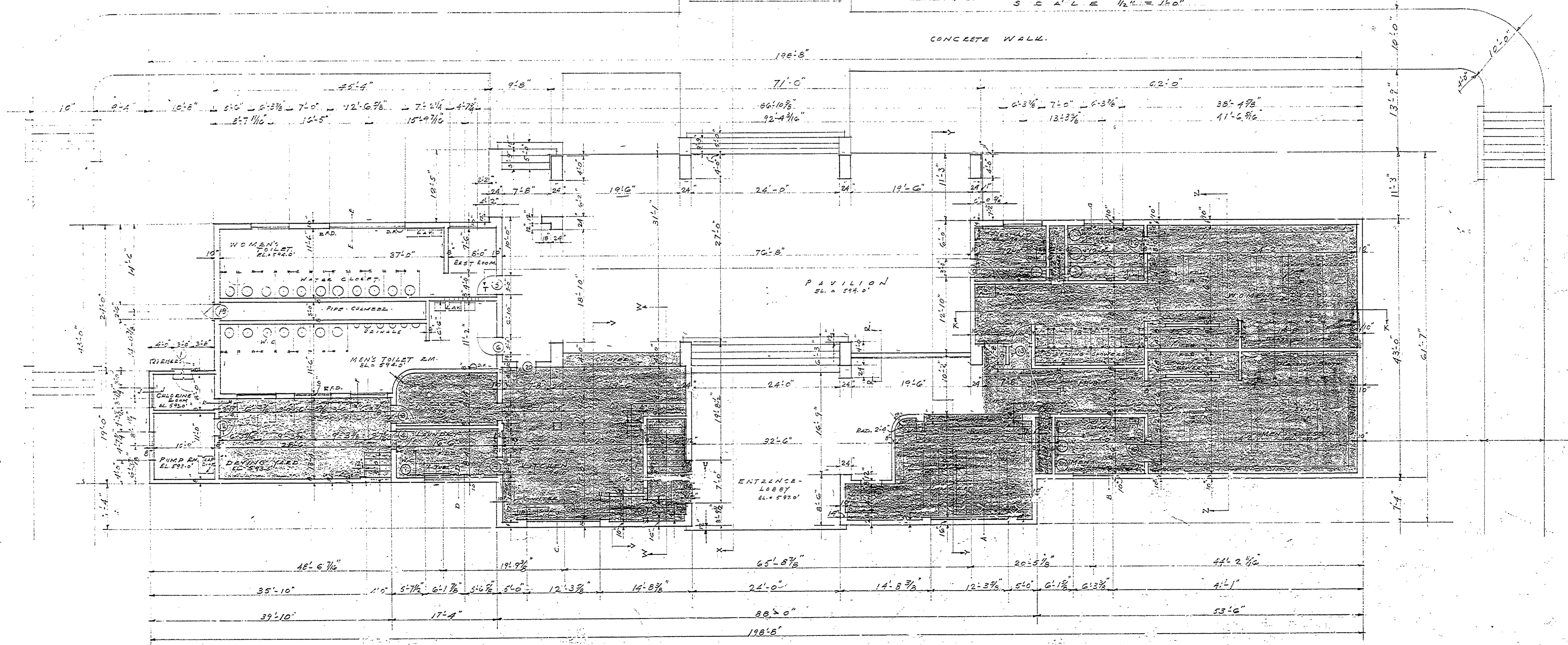


D O O R S C H E D U L E						
No.	WIDTH	HEIGHT	THICKNESS	MATERIAL	GLASS	LOCATION
(1)	3'-0"	6'-0"	1 1/4"	FLUSH WOOD	"	CHLORINE RM.
2	"	6'-6"	"	"	"	LUMP RM.
3	"	"	"	"	"	STORAGE RM.
4	"	"	"	"	"	LAUNDRY
5	"	"	"	"	"	WOMEN'S TOILET
6	"	"	"	"	"	MEN'S TOILET
7	"	"	"	"	"	LAUNDRY
8	"	6'-6"	"	"	"	KITCHEN
9	"	6'-0"	"	"	"	BARBET STORAGE
10	3'-0"	6'-6"	1 1/4"	"	"	FIRST AID
11	2'-2"	6'-6"	1 1/4"	(LOWEROFF-TOP)	"	PIPE CHAMBER
12	3'-0"	7'-0"	1 1/4"	FLUSH WOOD	"	WOMEN'S TOILET
13	"	6'-8"	"	"	"	TO DRESSING RM.
(2) 14	3'-0"	"	1 1/4"	"	"	TO DRESSING RM.
15	2'-2"	6'-6"	1 1/4"	(LOWEROFF-TOP)	"	PIPE CHAMBER
16	3'-0"	7'-0"	1 1/4"	FLUSH WOOD	"	MEN'S TOILET
17	3'-0"	6'-6"	1 1/4"	"	"	HELPS QCTS.
18	2'-6"	"	1 1/4"	"	"	BATH ROOM
19	2'-6"	"	1 1/4"	(LOWEROFF-TOP)	"	MAIN PIPE CHAMBER
(20)	5'-0"	6'-6"	1 1/4"	FLUSH WOOD	"	KITCHEN

SECOND FLOOR PLAN
S.C.A.L.E. 1/8" = 1'-0"



FIRST FLOOR PLAN
S.C.A.L.E. 1/8" = 1'-0"

MICHIGAN
DEPARTMENT OF CONSERVATION
STATE PARKS DIVISION

MUSKEGON STATE PARK
MUSKEGON
BATH HOUSE

DESIGNED BY: J. H. ...
DRAWN BY: ...
CHECKED BY: ...
APPROVED: CHIEF, PARKS DIVISION DATE: ...
APPROVED: INSPECTOR DATE: ...
APPROVED: DATE: ...

INSURANCE No. 15

A-103