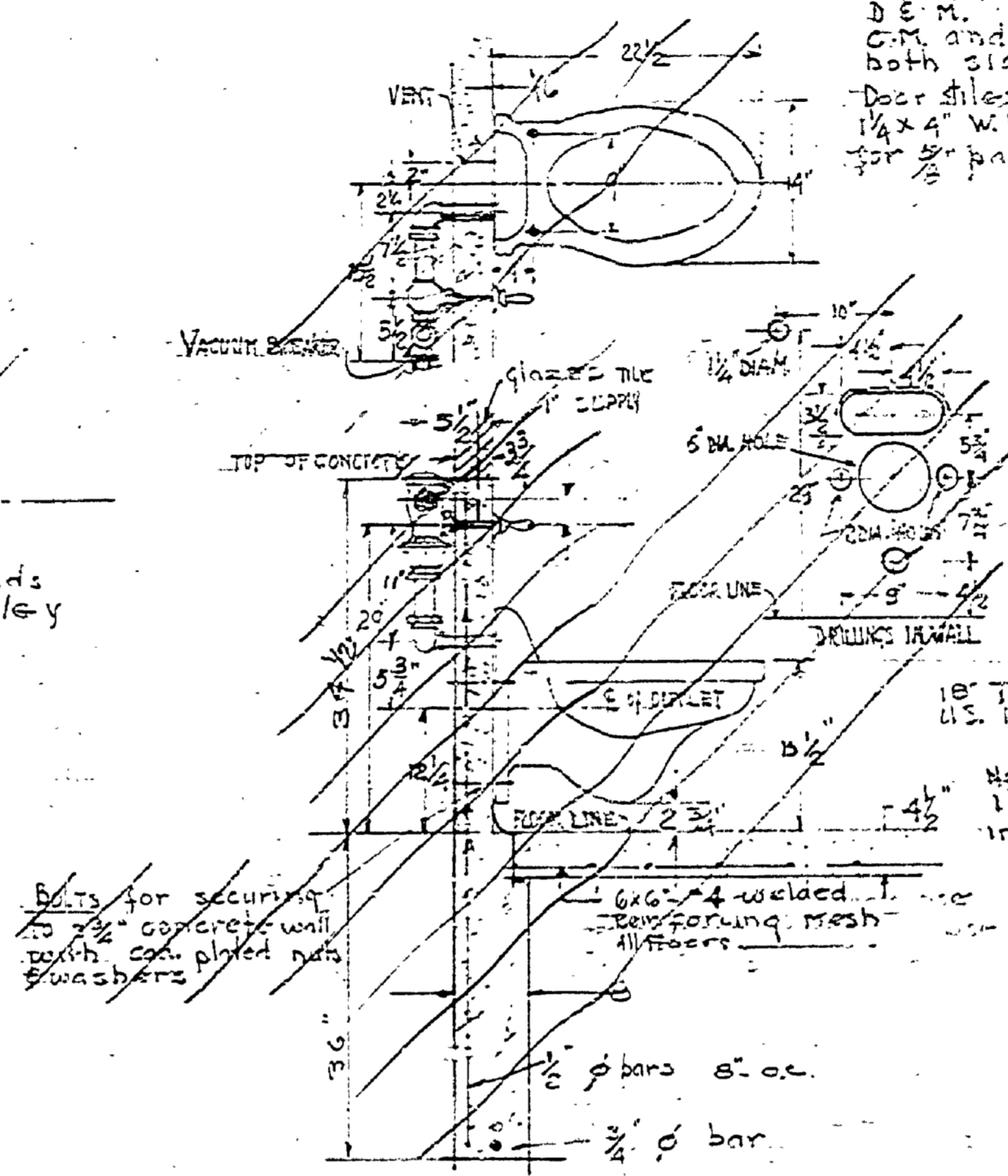
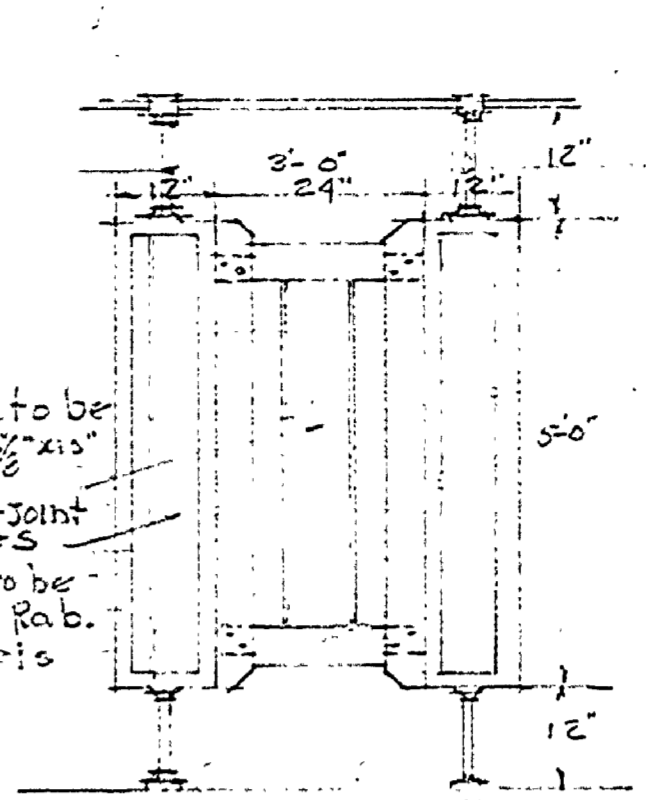


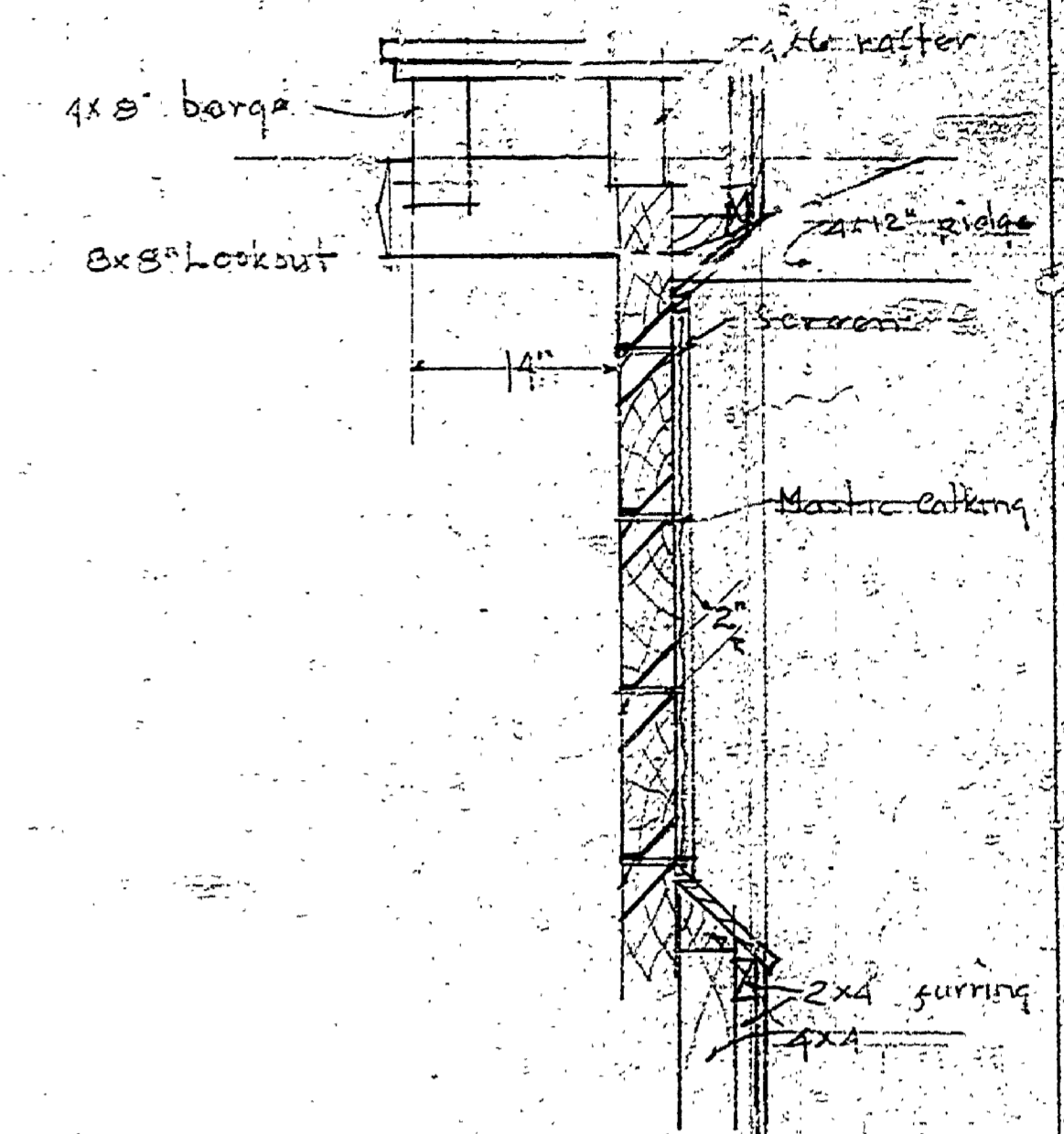
DETAILED ASSEMBLY OF DRAINAGE FITTINGS FOR WALL TYPE W.C. AND DRAINAGE SYSTEM
Tappings are indicated for raised rear vent - W.C.



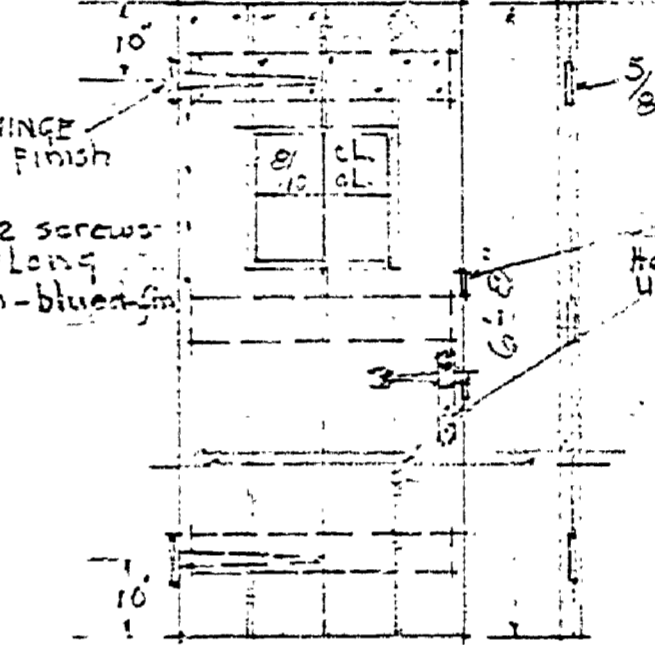
SECTION THROUGH PIPE ALLEY showing location of W.C. flush valve and vacuum breaker. Flush valve to be placed outside of structural wall.



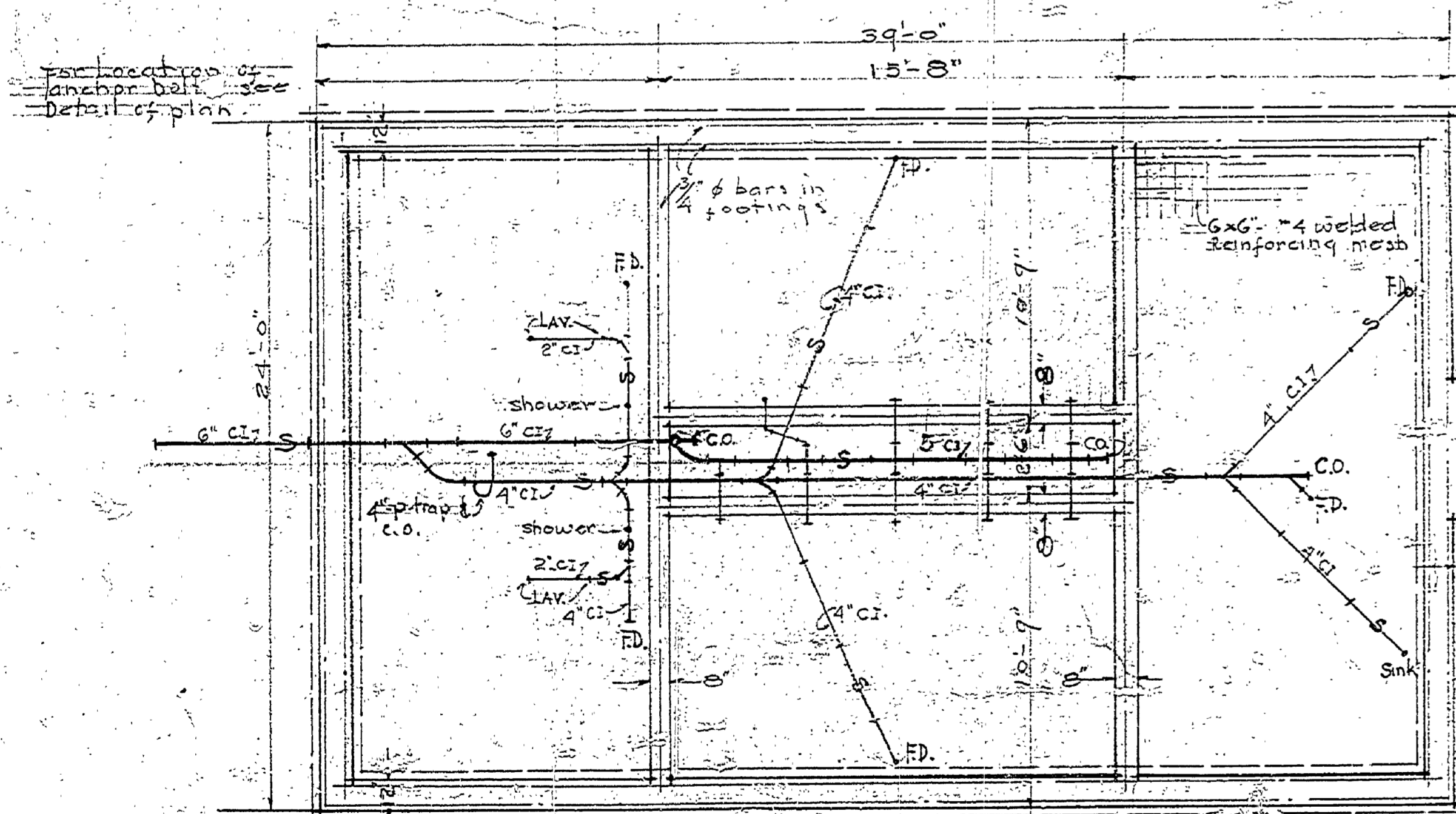
DOOR DETAIL scale 1/2\"/>



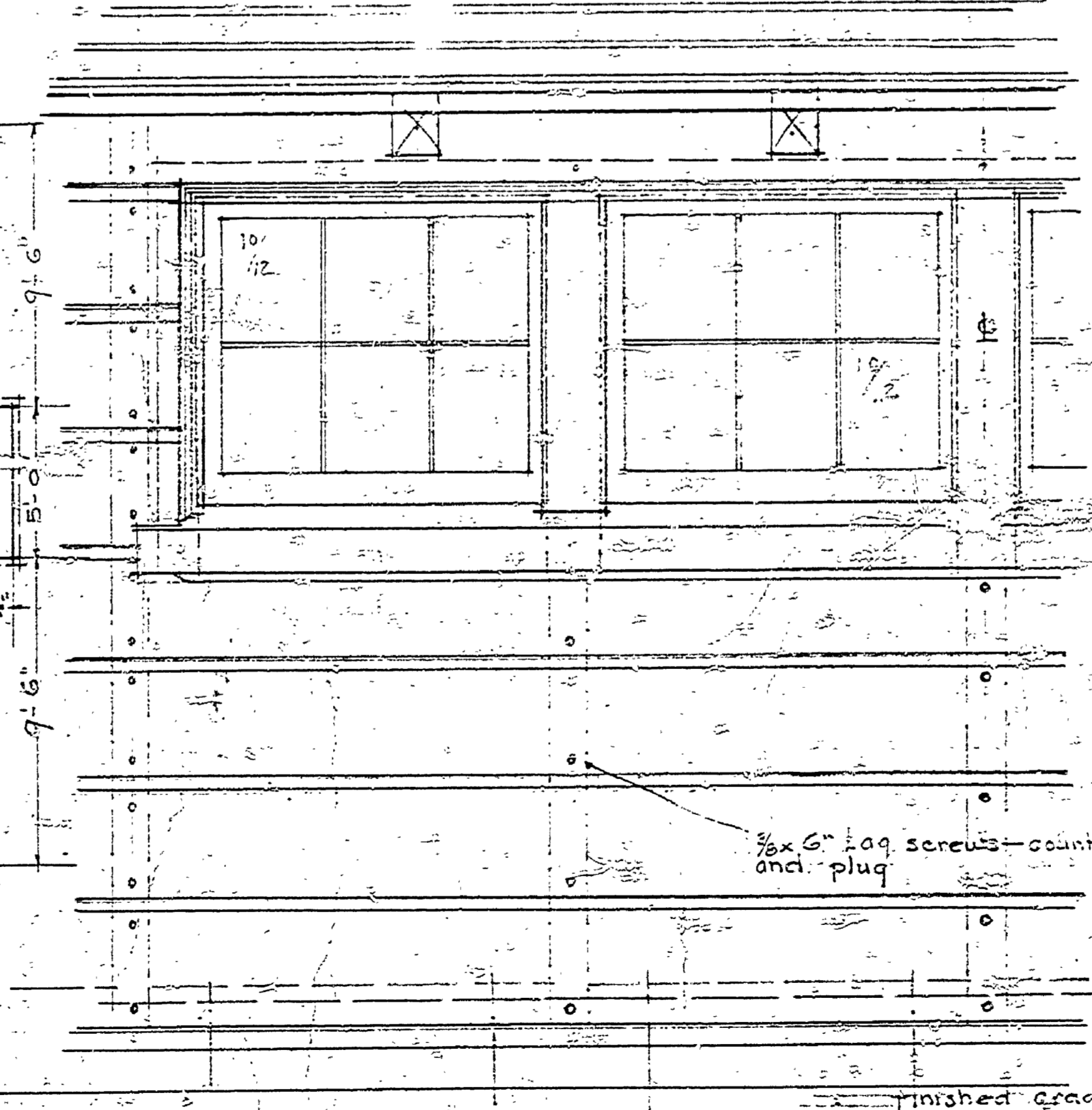
DETAIL OF LOUVER scale 1/2\"/>



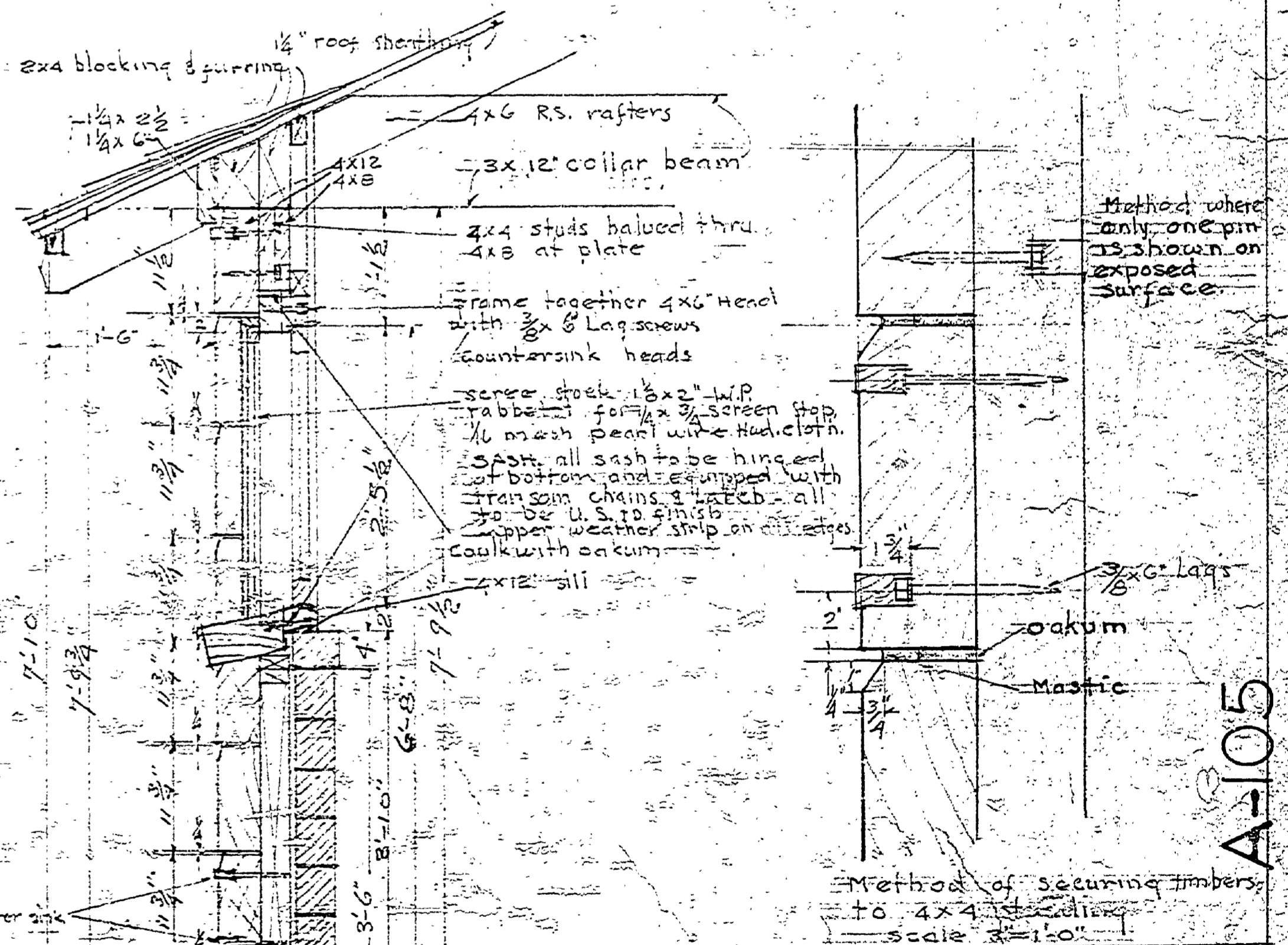
EXTERIOR DOOR DETAIL scale 1/2\"/>



PLAN OF FOUNDATIONS & DRAINAGE scale 1/4\"/>



TYPICAL WALL DETAIL scale 1/2\"/>



MICHIGAN DEPARTMENT OF CONSERVATION PARKS DIVISION

| | | |
|-------------|------------------------------------|------|
| DRAWN BY | COMBINATION TOILET AND LAUNDRY BOX | DATE |
| DESIGNED BY | MUSKEGON S.P. | DATE |
| CHECKED BY | | DATE |
| PREPARED BY | | DATE |
| APPROVED BY | | DATE |

A-105