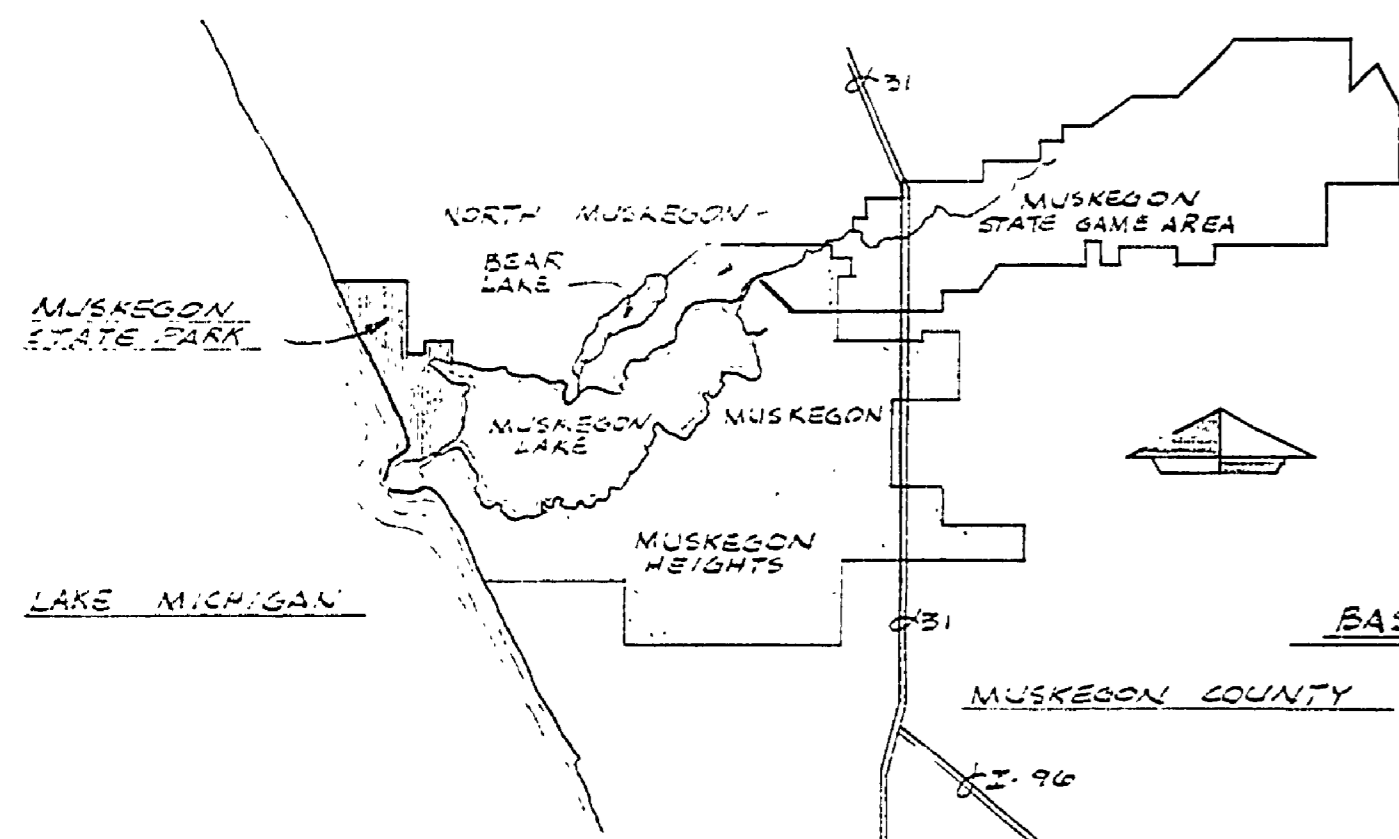


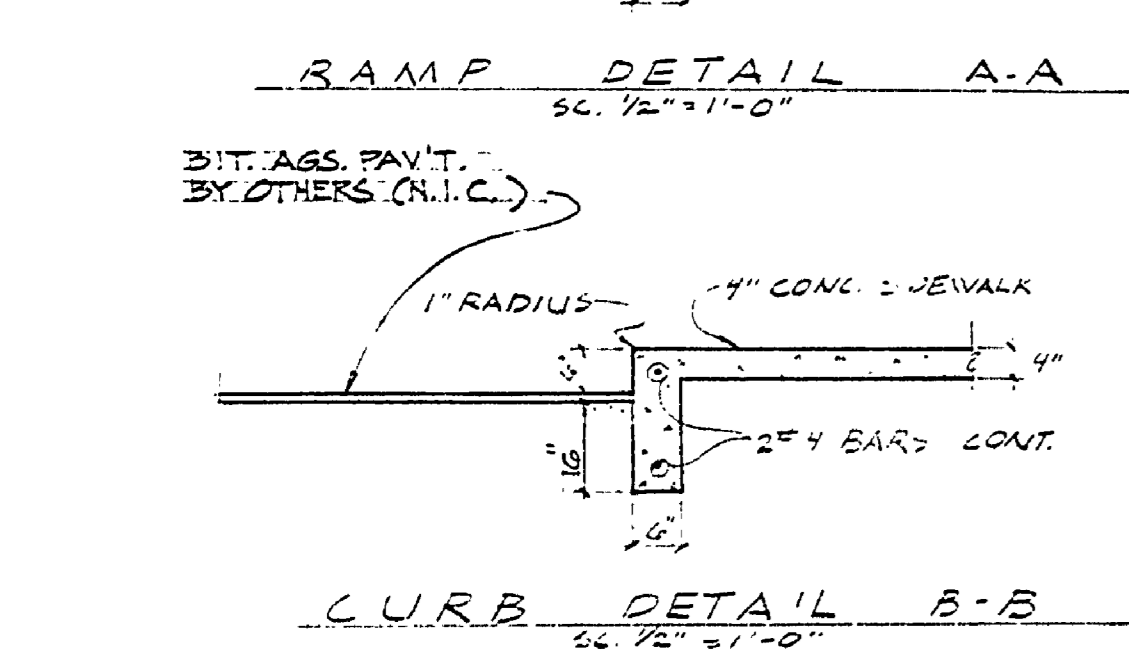
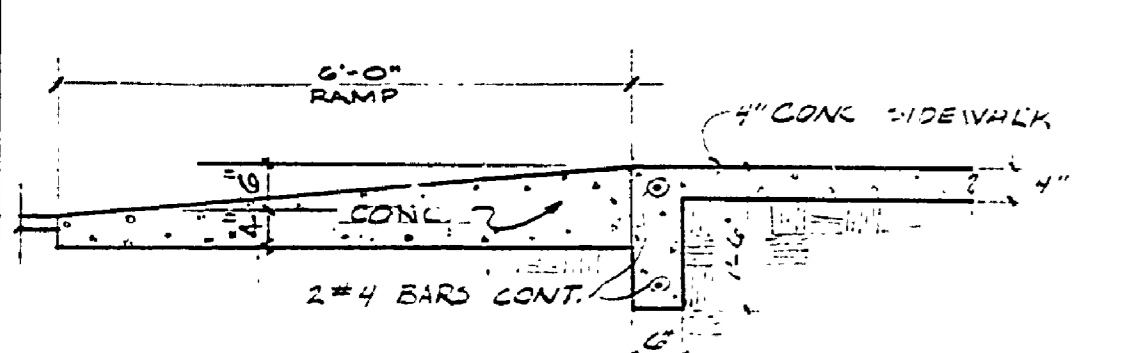
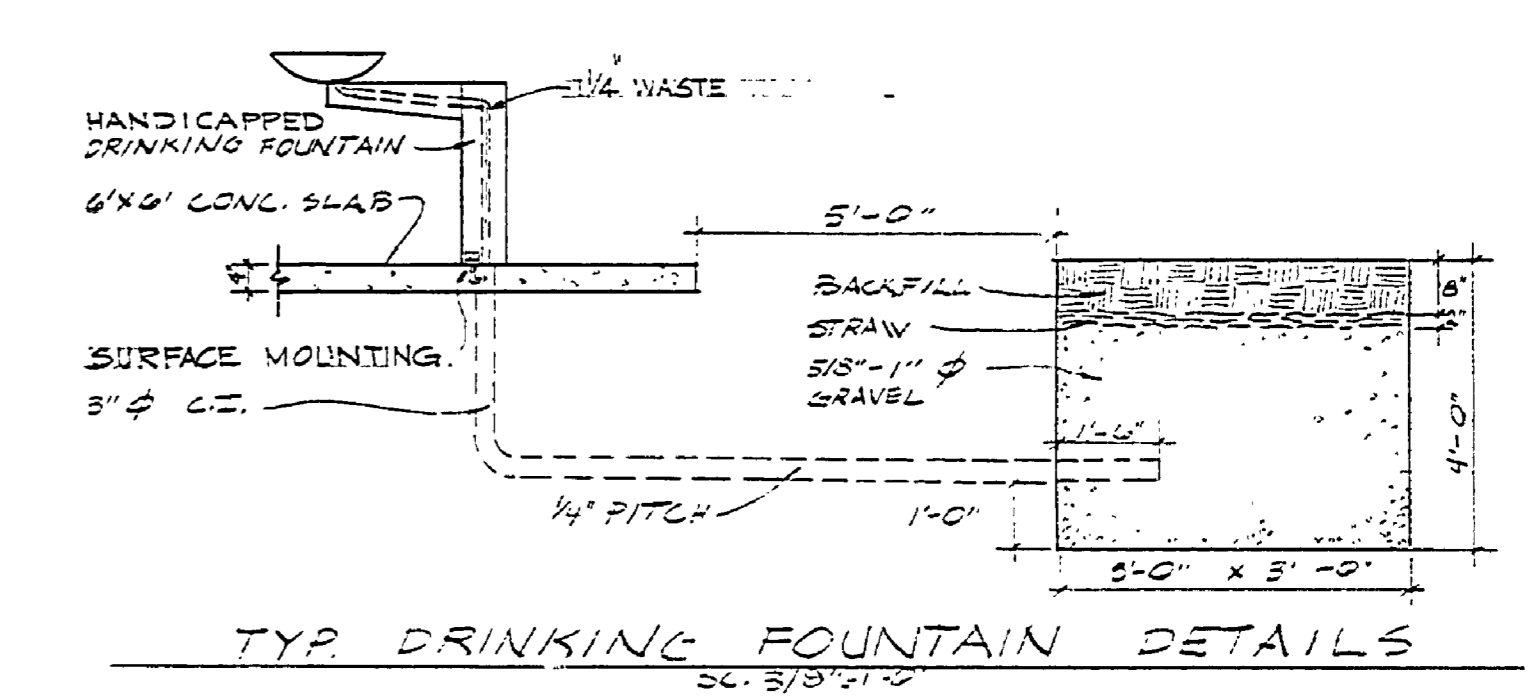
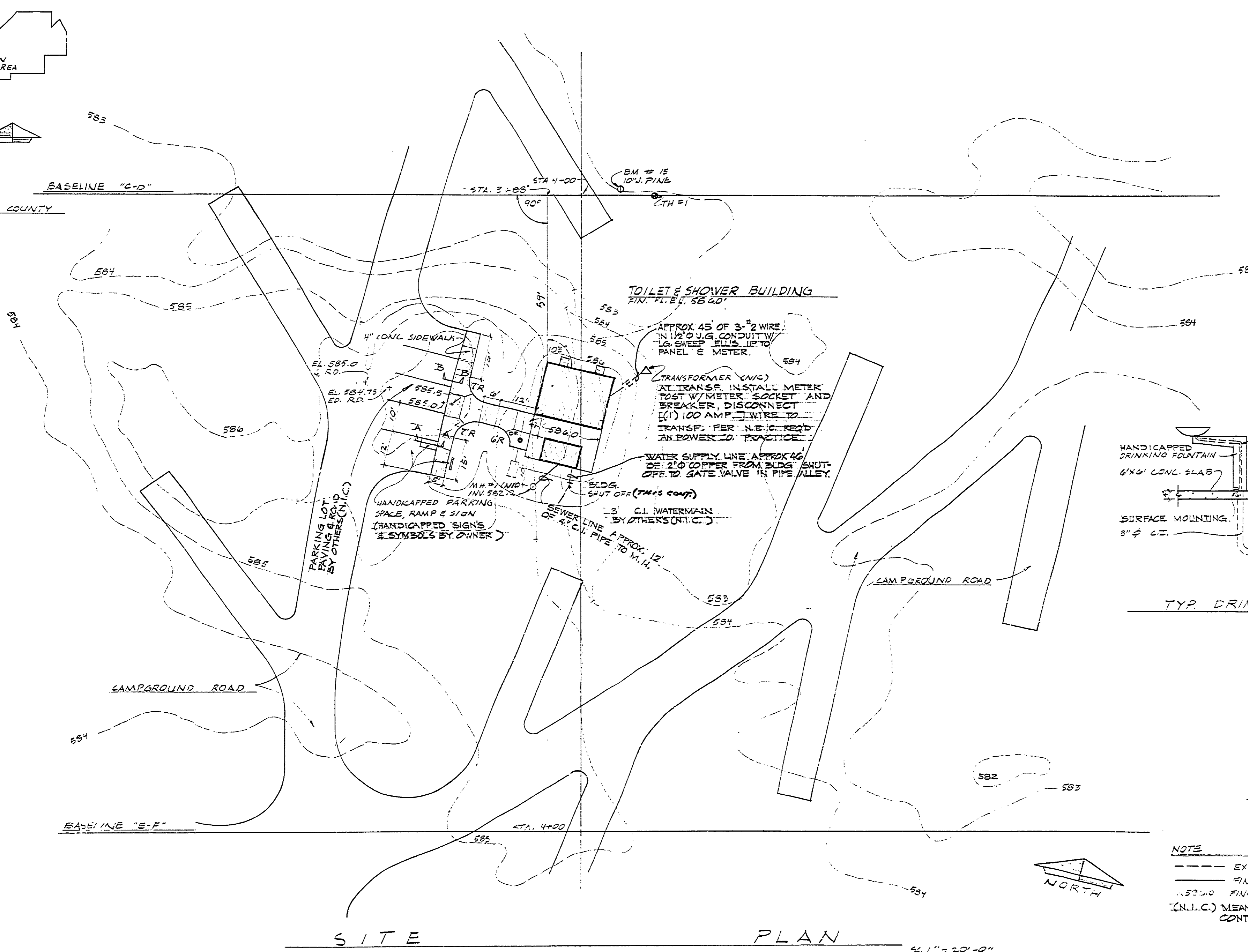
MUSKEGON STATE PARK

TOILET & SHOWER



WITNESSES

- PT. "C" 1/2" PIPE
648°W, 7.41', SPIKE IN TRIPLE 4" J. PINE
N12°W, 27.90', SPIKE IN 5" J. PINE
- PT. "D" 1/2" PIPE
S14°E, 33.17', SPIKE IN 6" J. PINE
S77°E, 32.19', SPIKE IN 6" J. PINE
- PT. "E" 1/2" PIPE
S78°W, 9.61', SPIKE IN 10" J. PINE
S32°E, 9.40', SPIKE IN 9" J. PINE
- PT. "F" 1/2" PIPE
N36°E, 57.93', SPIKE IN 8" J. PINE
N1°E, 26.70', SPIKE IN 6" J. PINE
- BM # 15 EL. 534.15
R.R. SPIKE IN SOUTH SIDE OF 10" J. PINE 2' LEFT OF STA. 4+13
BASELINE "C-D"
- T4 # 1 STA 4+25 BASELINE "C-D"
0.2' SAND
0.5' WATER TABLE



NOTE
 - - - - - EXIST. CONTOURS
 ——— FINISHED CONTOURS
 - - - - - 15200 FINISHED ELEVATION
 (N.L.I.C.) MEANS NOT IN THIS CONTRACT.

DRAWING SCHEDULE	
SH. NO.	DESCRIPTION
1	TITLE SHEET & SITE PLAN
2	FLOOR PLAN, ELEVATIONS, DOOR & ROOM FINISH SCHEDULE
3	SECTIONS, DETAILS & ROOF FRAMING PLAN
4	ELECTRICAL & WATER SUPPLY PLAN

BUILDING COMMITTEE APPROVAL	
BY: <i>[Signature]</i>	DATE: 1-1-75
RECOMMENDED FOR APPROVAL: <i>[Signature]</i>	
RECOMMENDED FOR APPROVAL: <i>[Signature]</i>	
APPROVED: <i>[Signature]</i> 1-14-75	

SURVEYED BY	DRAWN BY G. TOMPKINS	NO. 1	DATE	BY	REVISIONS	NO. 3	DATE	BY	REVISIONS	MICHIGAN DEPARTMENT OF NATURAL RESOURCES	TITLE SHEET & SITE PLAN SHEET TITLE	MUSKEGON STATE PARK AREA OR PARK	PROJECT NO. 24-1457
DESIGNED BY G.R.C.	CHECKED BY	DATE	DATE	DATE	DATE	DATE	DATE	DATE	DATE			TOILET & SHOWER BUILDING PROJECT	SHEET 1 OF 4 PLAN NO. A-114