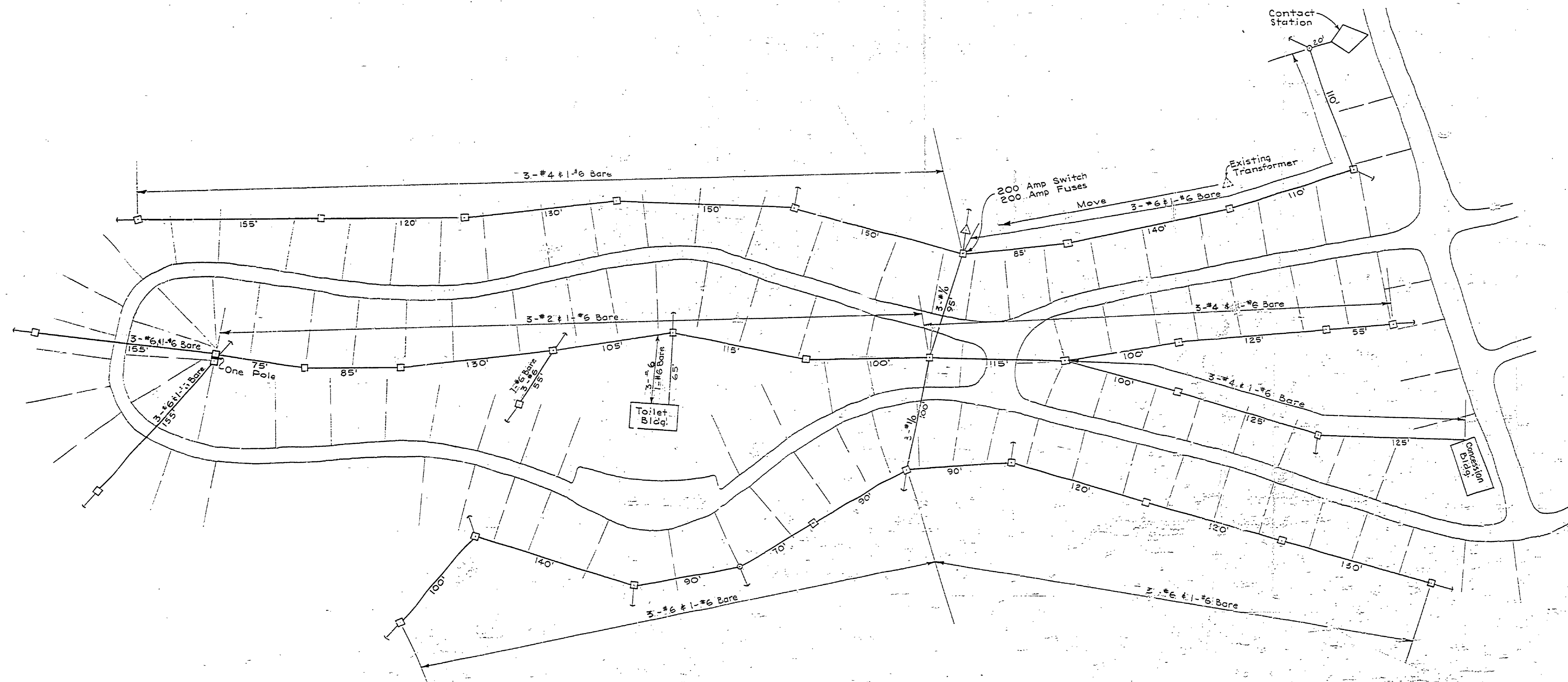


DESIGNED BY	DATE	REVIEWED	DATE	APPROVED	DATE	NO.	DATE	BY	REVISIONS
B.H.G.	Dec. '63	ARCHITECTURAL	12-19-63	<i>[Signature]</i>	12-18-63	1	12-18-63	DMC	DESIGN REVISED TO REPLACE EXISTING 3-5 SYSTEM WITH 30 AMP SERVICE
B.H.G.	Dec. '63	ENGINEERING	12-19-63	<i>[Signature]</i>		2			
B.H.G.	Dec. '63	LANDSCAPE	12-19-63	<i>[Signature]</i>		3			
						4			
						5			
						6			



- KEY**
- 4 Outlet Box
  - ⊕ Anchor Guy
  - △ Transformer
  - Pole

- NOTES**
- (1) All wire will be weatherproof except as shown on plan.
  - (2) The #1 WP available at the Region Warehouse may be used in place of the #2 WP shown on this sheet.

SCALE 1" = 50'

Note: Sheet 3 of 3 is SE 151

MICHIGAN  
DEPARTMENT OF CONSERVATION  
PARKS AND RECREATION DIVISION

MUSKEGON STATE PARK  
NORTH CAMPGROUND  
ELECTRIC SYSTEM, REVISION

SHEET NO. 2 OF 3  
PLAN NO. E-109