

BRUNING 0210	REVISIONS		NO. DATE BY	APPROVED BY	REVIEWED BY SECTIONS	DATE
	1			ARCHITECTURAL	7-67	
	2			ENGINEERING		
	3			LANDSCAPE		
	4			ASSISTANT CHIEF IN CHARGE		
	5			OF DESIGN		
	6			DATE		

**BENCH MARK DATA**

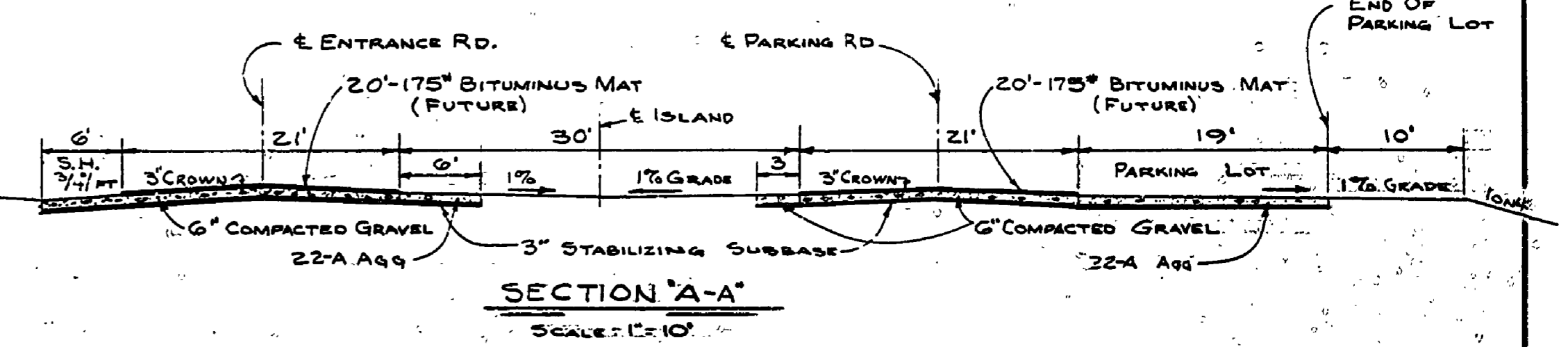
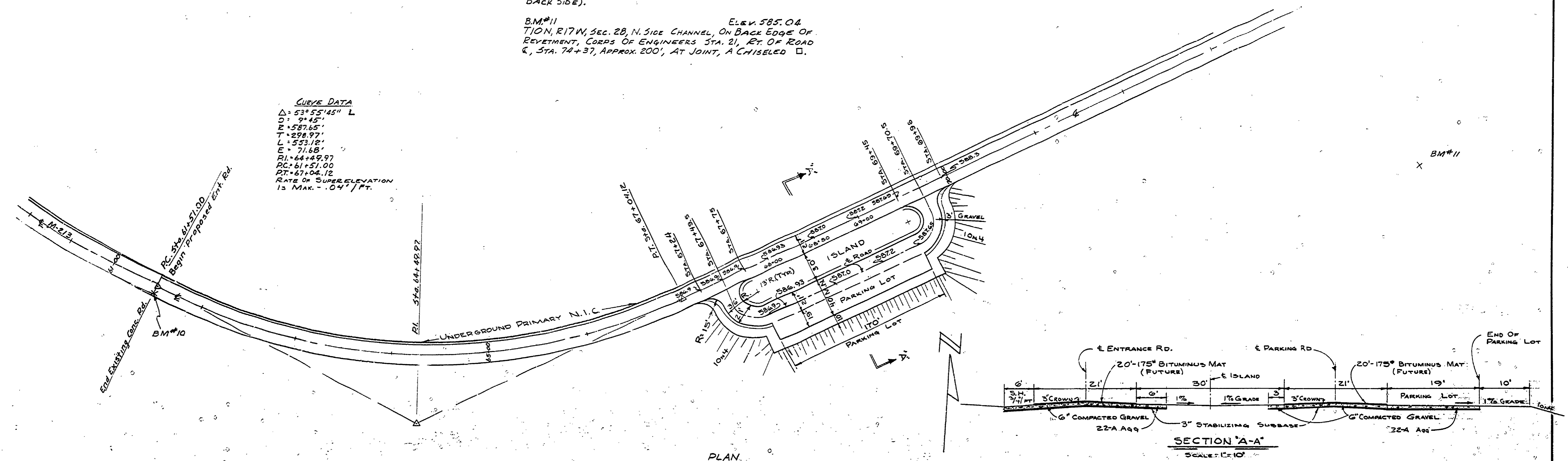
BM#9 ELEV. 600.94  
T.10N, R.17W, SEC. 28, SOUTH GATE TO BATHING BEACH PARKING LOT, A 16" SQUARE CONG. POST, N.E. CORNER, A CHISELED □.

BM#10 ELEV. 590.10  
T.10N, R.17W, SEC. 28, AT END OF CONG. ROADWAY OF M-213, TOP OF NUT OF 3" GUARD POST RAILING, (ON BACK SIDE).

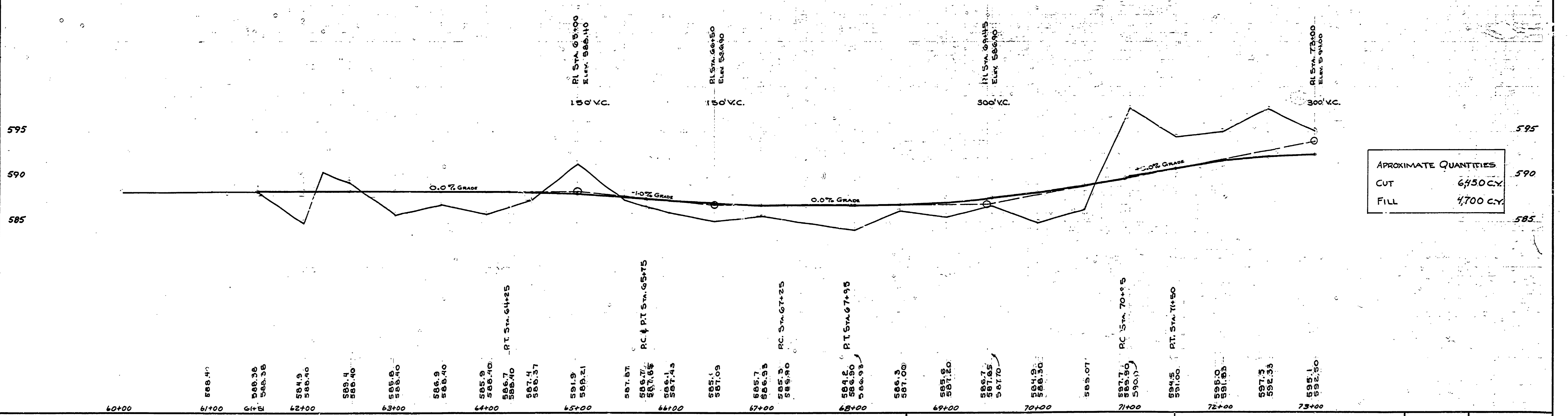
BM#11 ELEV. 585.04  
T.10N, R.17W, SEC. 28, N. SIDE CHANNEL, ON BACK EDGE OF REYMENT, CORPS OF ENGINEERS STA. 21, RT. OF ROAD (STA. 74+37), APPROX. 200', AT JOINT, A CHISELED □.

**CURVE DATA**

Δ = 53° 55' 15" L  
D = 9° 45'  
R = 581.65'  
T = 298.97'  
L = 553.12'  
E = 71.68'  
PI = 64+89.97  
PC = 61+51.00  
PT = 67+04.12  
RATE OF SUPER ELEVATION IS MAX. = .04' / FT.



PLAN SCALE: 1" = 50'  
Profile Scale: Horz: 1" = 50', Vert: 1" = 5'



APPROXIMATE QUANTITIES	
CUT	6450 CY
FILL	4700 CY