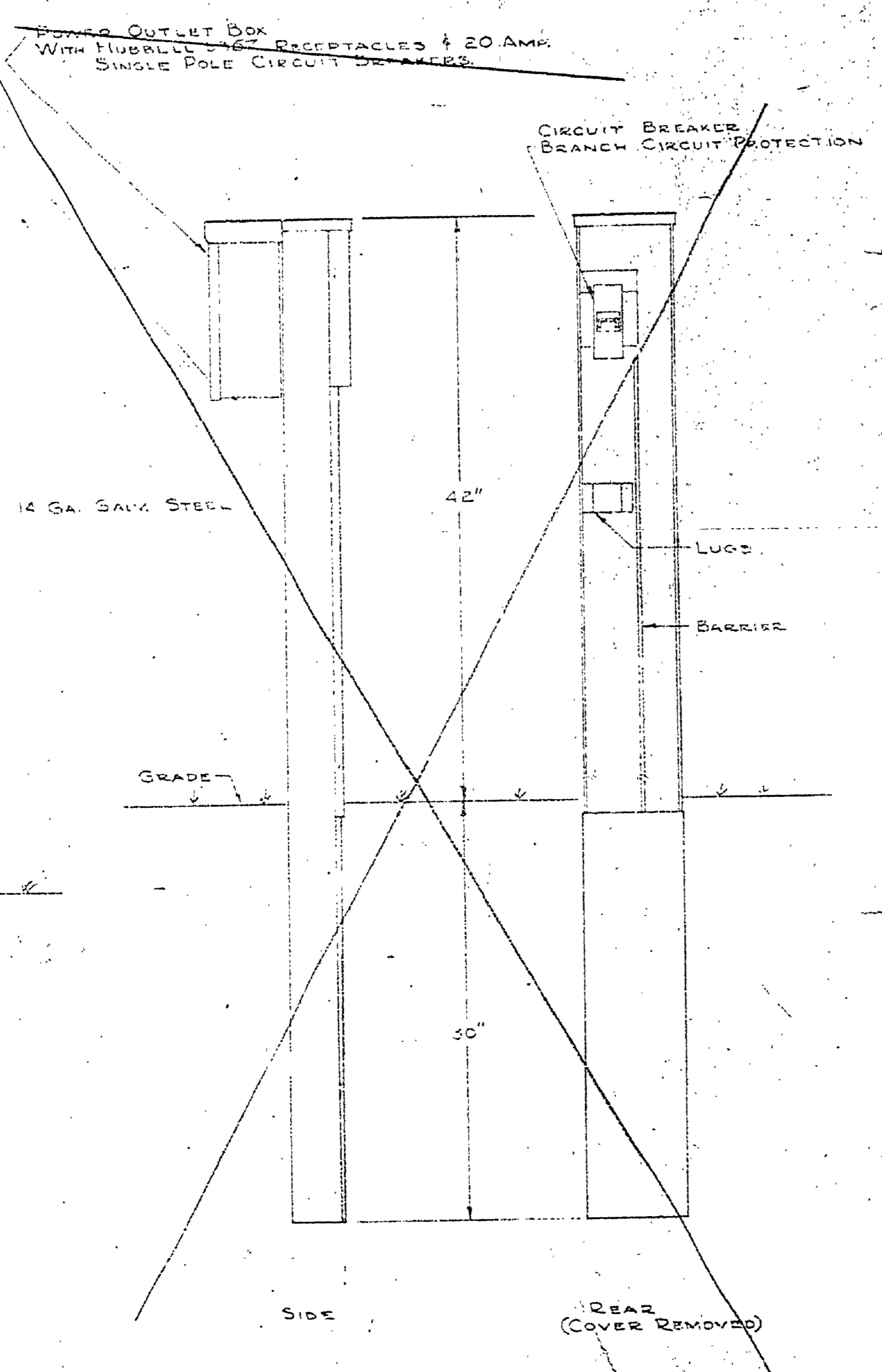
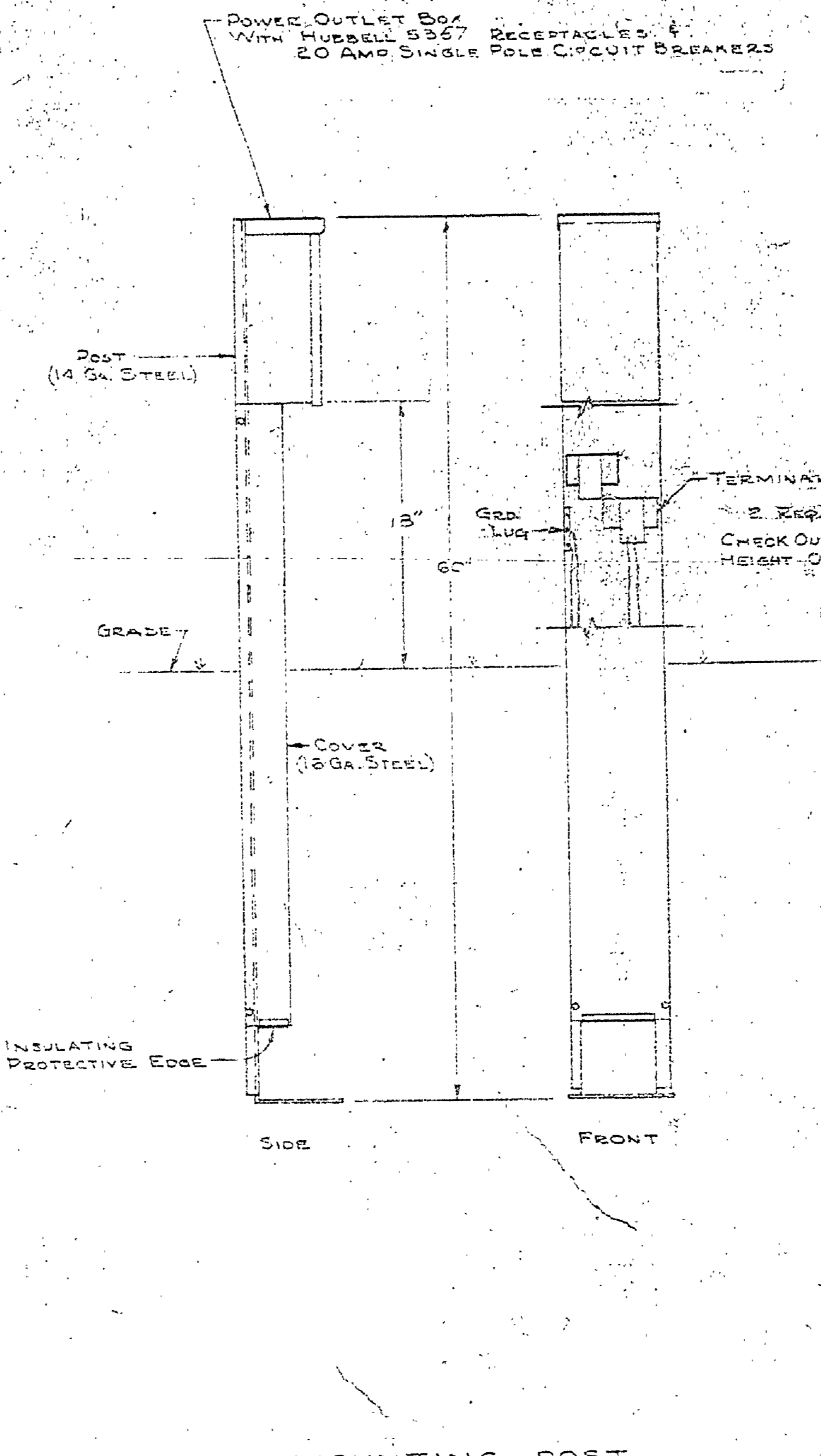


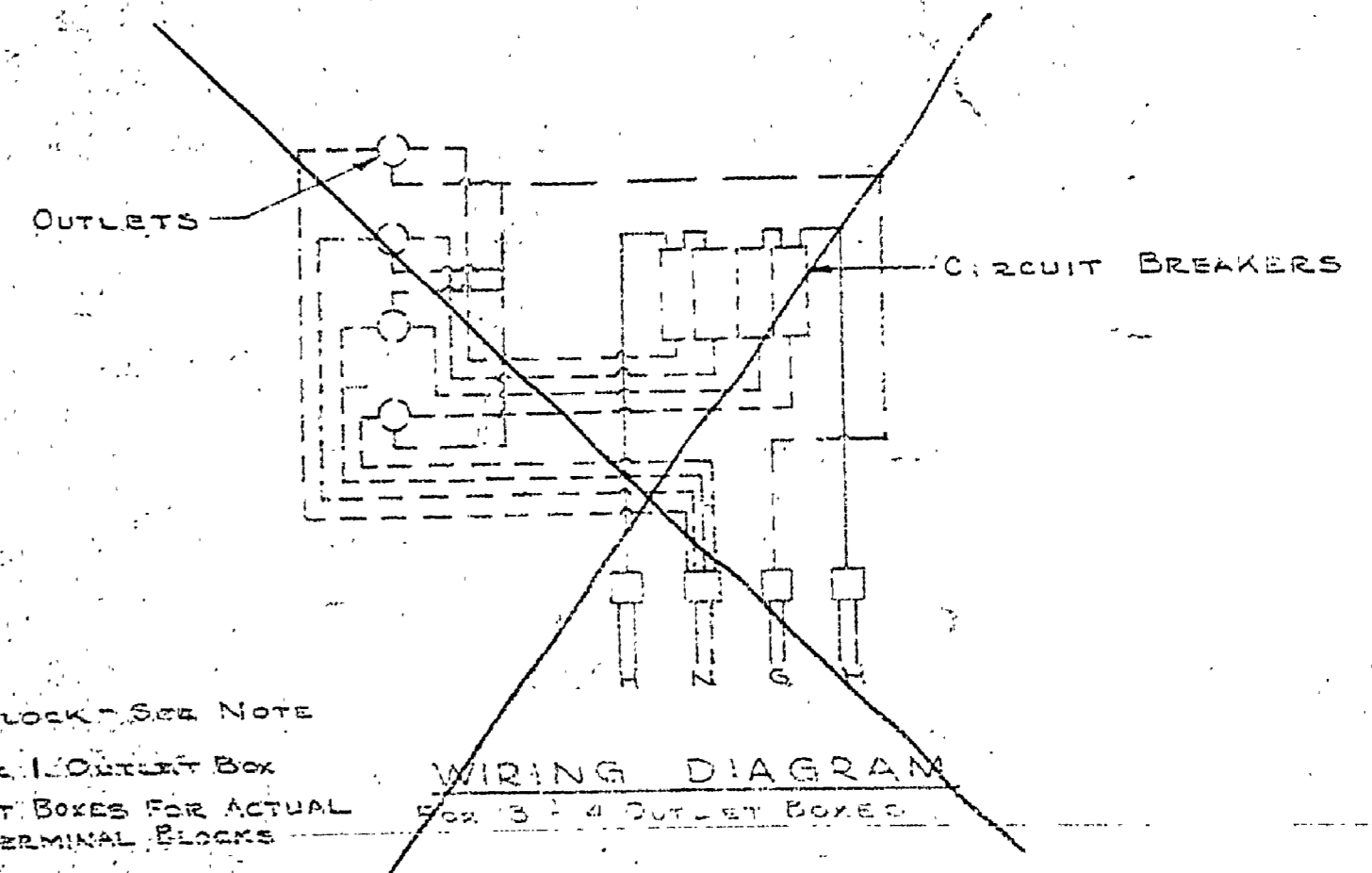
ENTRANCE RACK
 WITH METER SOCKET & CIRCUIT BREAKER PANEL BOARD
 NOTE: GROUND ELECTRICAL SYSTEM AT DISTRIBUTION PANELBOARD TO NEAREST BURIED WATER PIPE



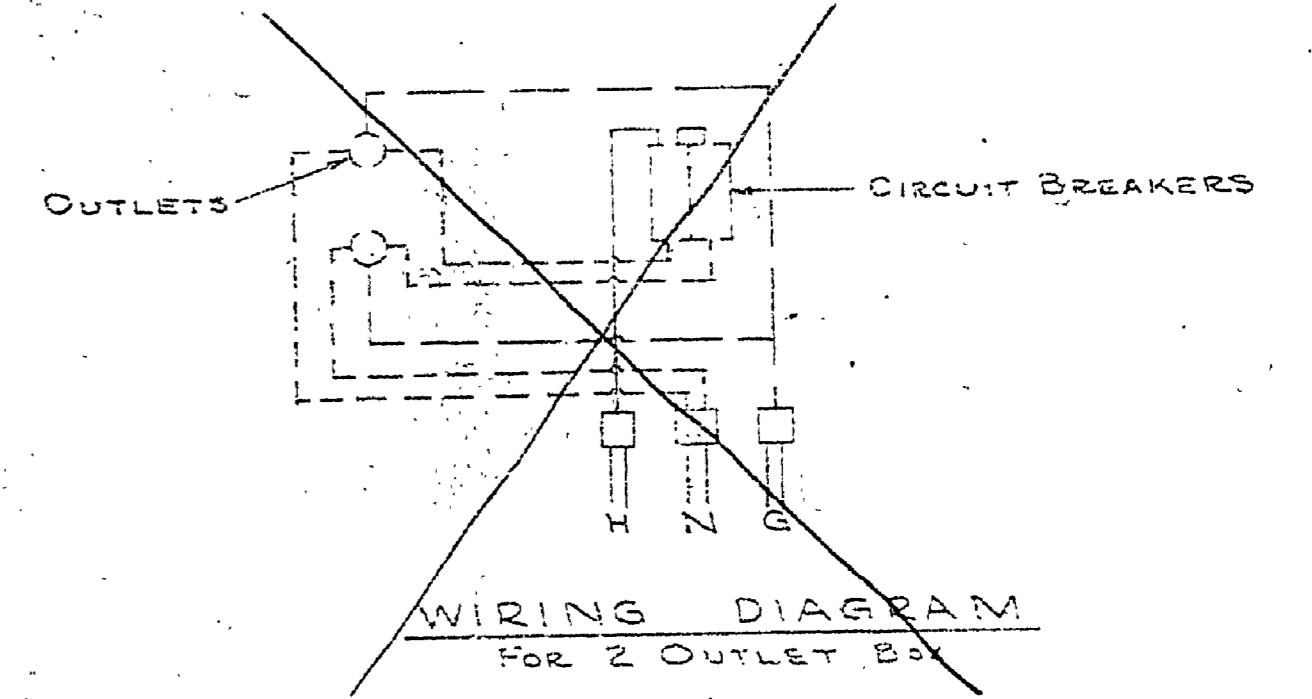
JUNCTION POST
 WITH CIRCUIT BREAKER BRANCH CIRCUIT PROTECTION



MOUNTING POST
 WITH OUTLET BOX

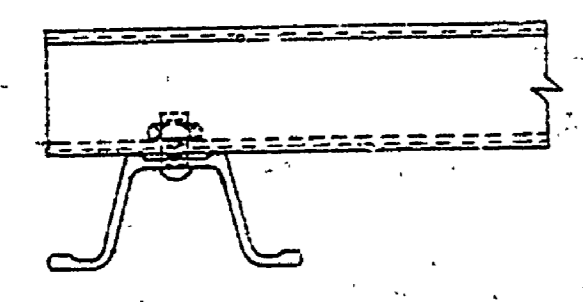


WIRING DIAGRAM
 FOR 3, 4 OUTLET BOXES

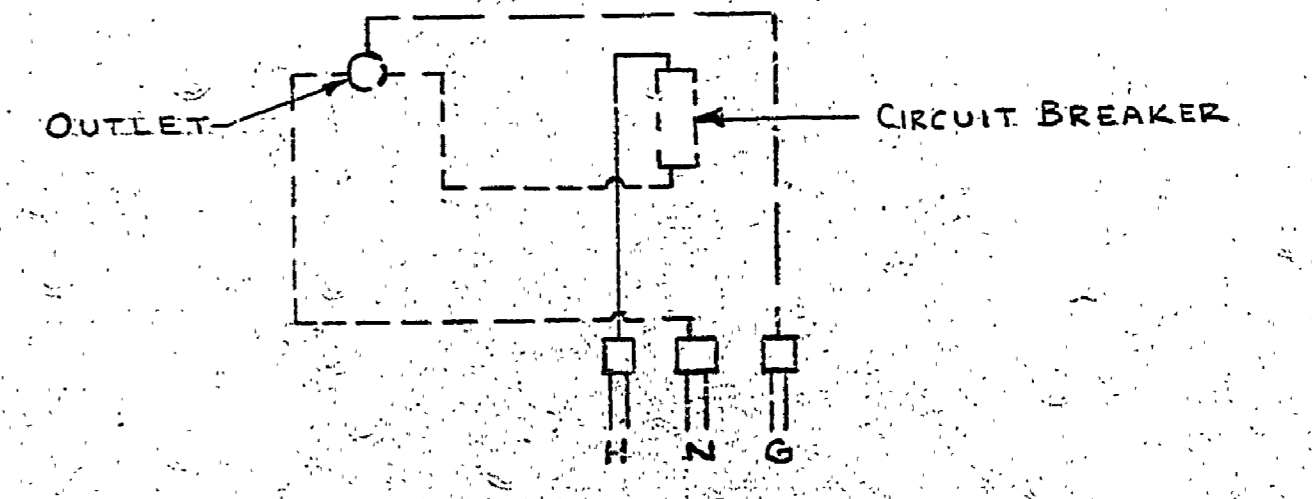


WIRING DIAGRAM
 FOR 2 OUTLET BOXES

NOTE: THESE POSTS ARE DESIGNED TO PERMIT LOOPING OF CABLE FROM ONE UNIT TO THE NEXT. SPlicing TO BE DONE IN POST. LUGS ARE PROVIDED TO RECEIVE UP TO #4/0 WIRE. GROUND TO BARS TO EQUIPMENT GROUND PROVIDED ON POST.



SECTION A-A
 NO SCALE



WIRING DIAGRAM
 FOR 1 OUTLET BOX

SURVEYED BY: L. THOMPSON	OCT '73	DRAWN BY: J. YONKA & E. HARRY	REV. NO.	DATE	BY	REVISIONS		NO.	DATE	BY	REVISIONS	MICHIGAN DEPARTMENT OF CONSERVATION	STANDARD PLAN UNDERGROUND SECONDARY FOR CAMPGROUND	SHEET NO. OF	MUSKEGON STATE PARK CAMPGROUND DEVELOPMENT
						1	4-15-73							J.Y.	WIRING DIA. REV. TERMINAL BLOCK ADDED
DESIGNED BY: W. J. PERRY	AUG '66	CHECKED BY:	DATE	2	11-27-66	J.Y.	CONDUIT BUSHING ADDED	4							