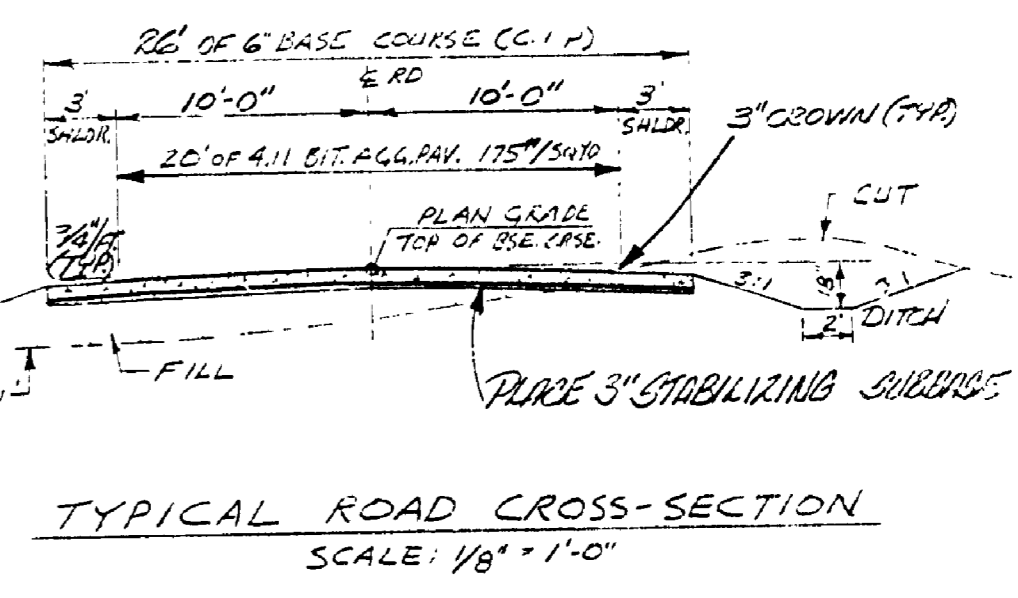
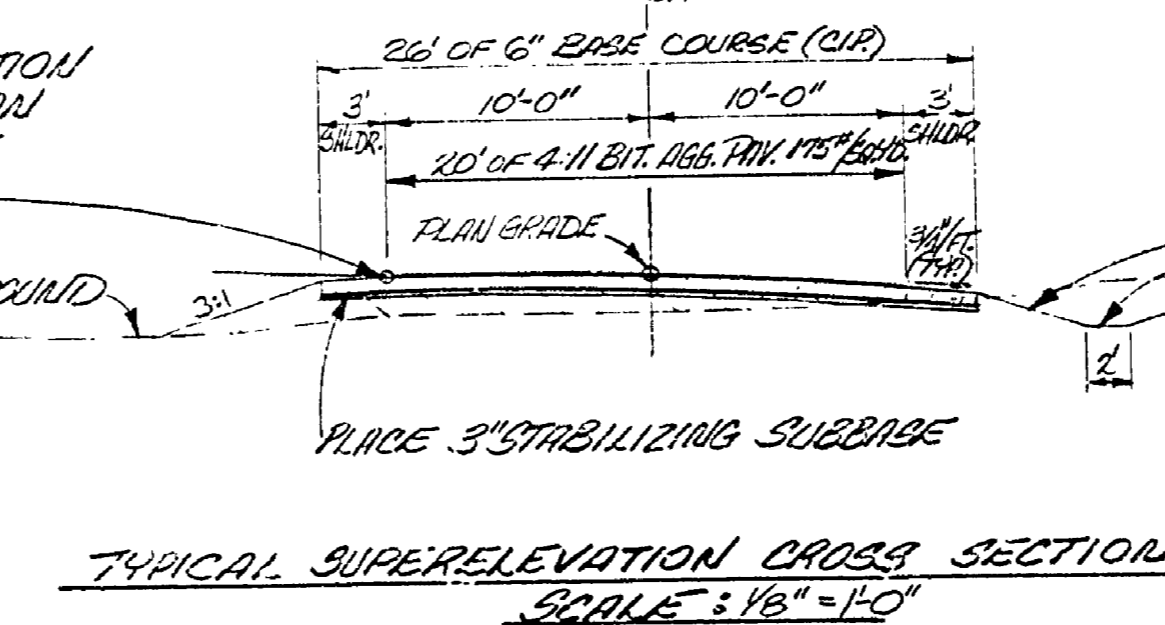


CURVE #4 DATA
 $\Delta = 46^\circ$
 $D = 6^\circ 40'$
 $R = 859.44'$
 $T = 364.81'$
 $E = 74.22'$
 $L = 690.00'$
 $PI = 88+72.29$
 $PC = 85+07.48$
 $PT = 91+97.48$
 RATE OF SUPERELEVATION
 0.04%/FT. (THIS CURVE ONLY)

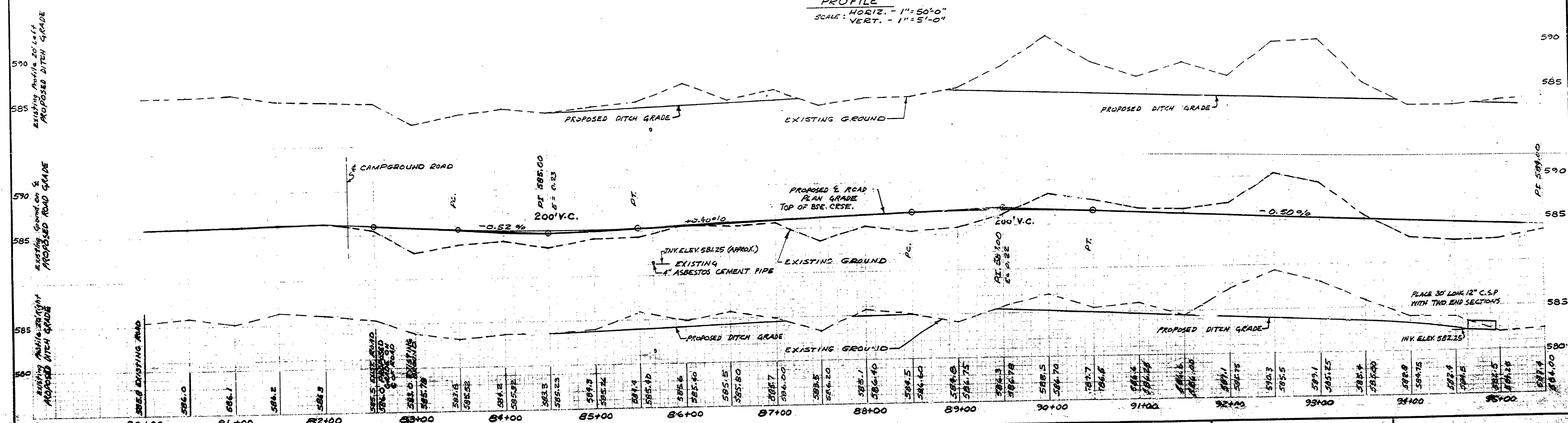
WITNESSES
PI #4
 1/2" PIPE
 S 79° W 41.09' SPIKE IN 9" JACK PINE.
 S 9° W 41.23' SPIKE IN 10" JACK PINE.
 N 24° E 7.30' 3/4" PIPE.
PI #5 (DISTANCE ON SLOPE)
 1/2" PIPE
 N 56° W 71.35' SPIKE 3' ABOVE GROUND
 IN 6" JACK PINE.
 NORTH 44.54' SPIKE 4' ABOVE GROUND
 IN 6" JACK PINE.
BM #14 ELEV. 584.79
 RR SPIKE IN N.W. SIDE OF A 14" JACK
 PINE 80' RT. OF STA. 93+74
BM #12 ELEV. 585.11
 PK. NUT & TAG IN W. SIDE 6" JACK PINE
 N 80° W 44.3' FROM STA. 82+32.29

CURVE #5 DATA
 $\Delta = 74^\circ 30'$
 $D = 11^\circ 45'$
 $R = 487.62'$
 $T = 370.79'$
 $E = 124.94'$
 $L = 634.04'$
 $PC = 87.93+44.65$
 $PI = 87+12.47$
 $PT = 87+93.72$

PLAN SCALE: 1"=50'



PROFILE
 HORIZ. - 1"=50'-0"
 VERT. - 1"=5'-0"



SURVEYED BY L. THOMPSON OCT. 78		DRAWN BY MITCH K. NOV. 78		NO. DATE BY		REVISIONS		NO. DATE BY		REVISIONS		MICHIGAN DEPARTMENT OF NATURAL RESOURCES		EXTENDED ENTRANCE ROAD PLAN & PROFILE		SHEET NO. OF		MUSKOGON STATE PARK	
DESIGNED BY A. PETRAVICIUS OCT. 78		CHECKED BY		DATE		DATE		DATE		DATE		FOR PROJECT NO. 24-1456		SHEET 2 OF 9		PLAN NO. E-119			