

WITNESSES

PT. "A"
 1/2" PIPE
 S67°W 9.42' SPIKE IN 10" JACK PINE.
 S5°E 31.23' SPIKE IN 5" JACK PINE.

PT. "B"
 3/8" PIPE
 S45°W 12.25' SPIKE IN 7" BLAZED JACK PINE.
 S45°E 17.03' SPIKE IN 4" BLAZED JACK PINE.

PT. "C"
 1/2" PIPE
 S 45°W 7.41' SPIKE IN TRIPPLE 6" JACK PINE.
 N12°W 27.96' SPIKE IN 8" JACK PINE.

PT. "D"
 1/2" PIPE
 S14°E 38.17' SPIKE IN 8" JACK PINE.
 S77°E 32.19' SPIKE IN 6" JACK PINE.

PT. "E"
 1/2" PIPE
 S78°W 9.67' SPIKE IN 10" JACK PINE.
 S32°E 9.40' SPIKE IN 9" JACK PINE.

PT. "F"
 1/2" PIPE
 N35°E 57.93' SPIKE IN 8" JACK PINE.
 N6°E 56.76' SPIKE IN 6" JACK PINE.

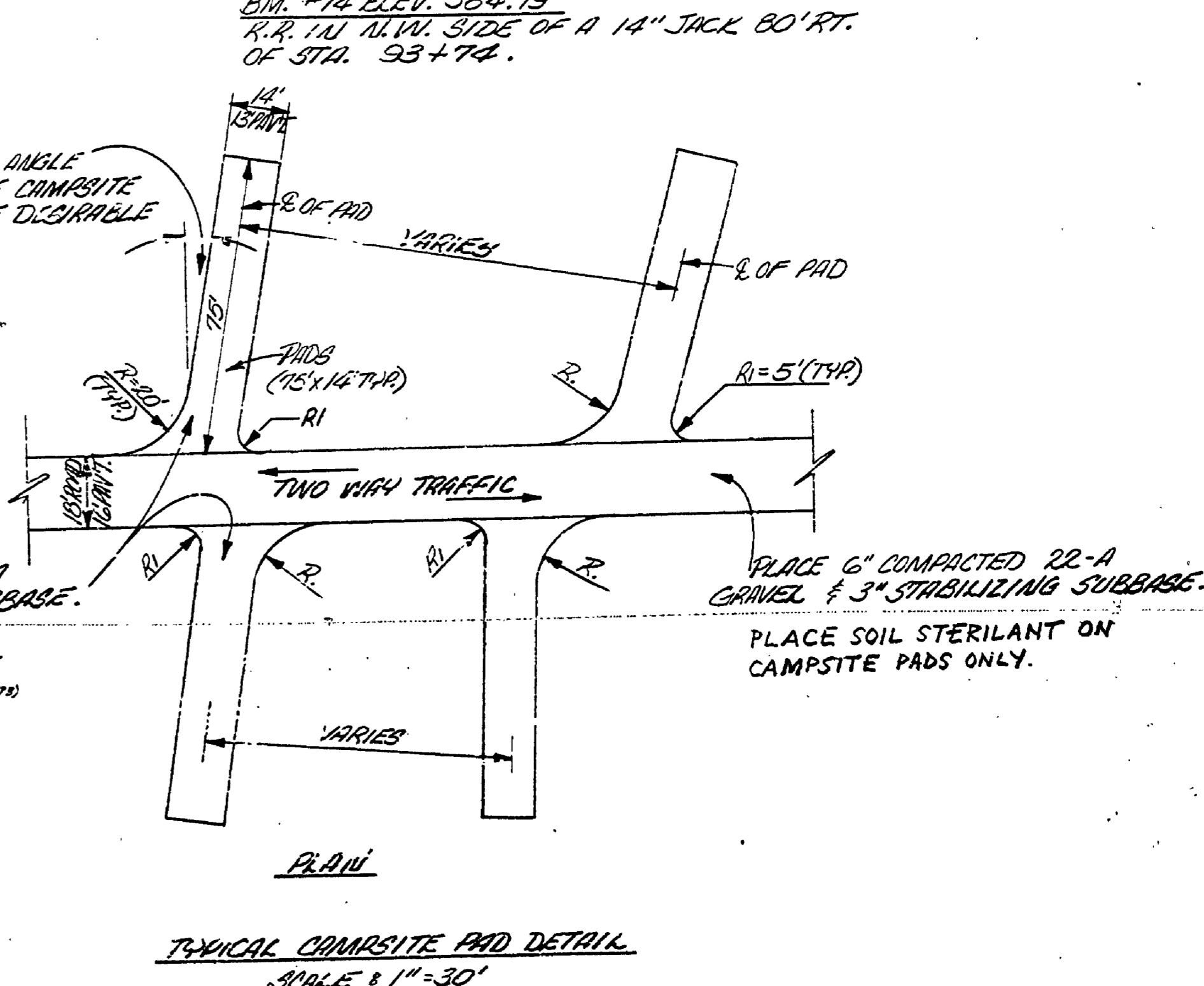
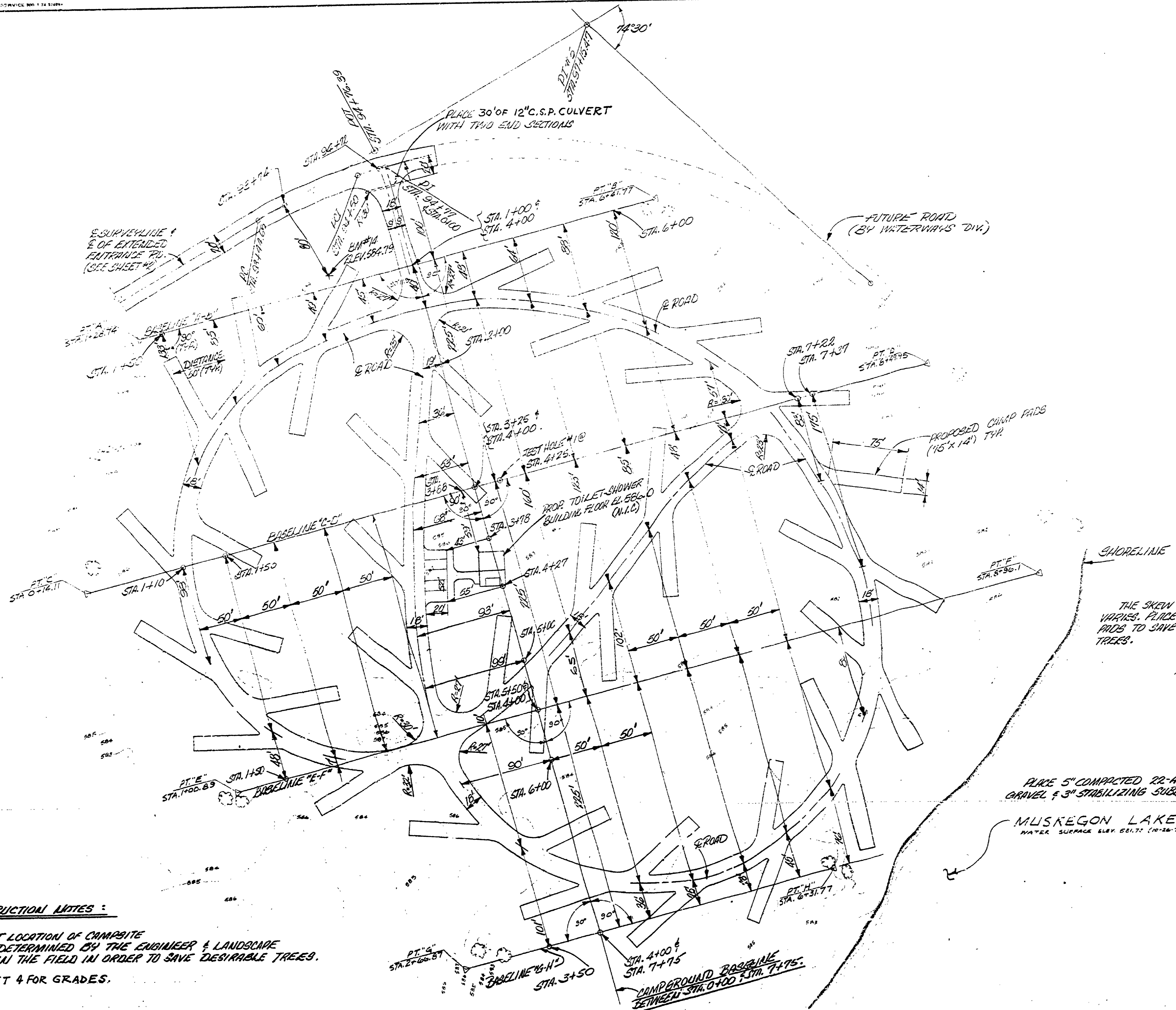
PT. "G"
 1/2" PIPE
 N26°E 25.29' SPIKE IN 13" JACK PINE.
 N68°E 34.36' SPIKE IN 12" JACK PINE.
 S87°W 108.0' CENTER LOT POST #13.

PT. "H"
 1/2" PIPE
 N31°W 12.05' SPIKE IN 12" JACK PINE.
 N86°E 11.61' SPIKE IN 4" JACK PINE.

D.M. #15 ELEV. 584.46
 R.R. SPIKE IN SOUTH SIDE OF 10" JACK PINE.
 2' LEFT OF STA. 4+13 BASELINE "C-D"

TEST HOLE #1 @ BASELINE "C-D" & STA. 4+25.
 0.2' SAND
 0.8' WATER TABLE.

D.M. #14 ELEV. 584.79
 R.R. IN NW. SIDE OF A 14" JACK 80' RT.
 OF STA. 95+74.



CONSTRUCTION NOTES:
 THE EXACT LOCATION OF CAMPSITE PADS TO BE DETERMINED BY THE ENGINEER & LANDSCAPE ARCHITECT IN THE FIELD IN ORDER TO SAVE DESIRABLE TREES.
 SEE SHEET 4 FOR GRADES.

PLAN
 SCALE: 1"=50'

DESIGNED BY: L. THOMPSON	10-73	DRAWN BY: B. BOYCE	4-74	NO. DATE BY	REVISIONS	NO. DATE BY	REVISIONS	MICHIGAN DEPARTMENT OF NATURAL RESOURCES	ROADS AND CAMPSITE PADS-LAYOUT	MUSKEGON STATE PARK AREA OR PARK PROJECT	CAMPGROUND DEVELOPMENT	PROJECT NO. 25-100	SHEET 3 OF 3	SCALE NO. E-113
CHECKED BY: A. METRAVICIUS	8-74	DATE	DATE	1.		2.								