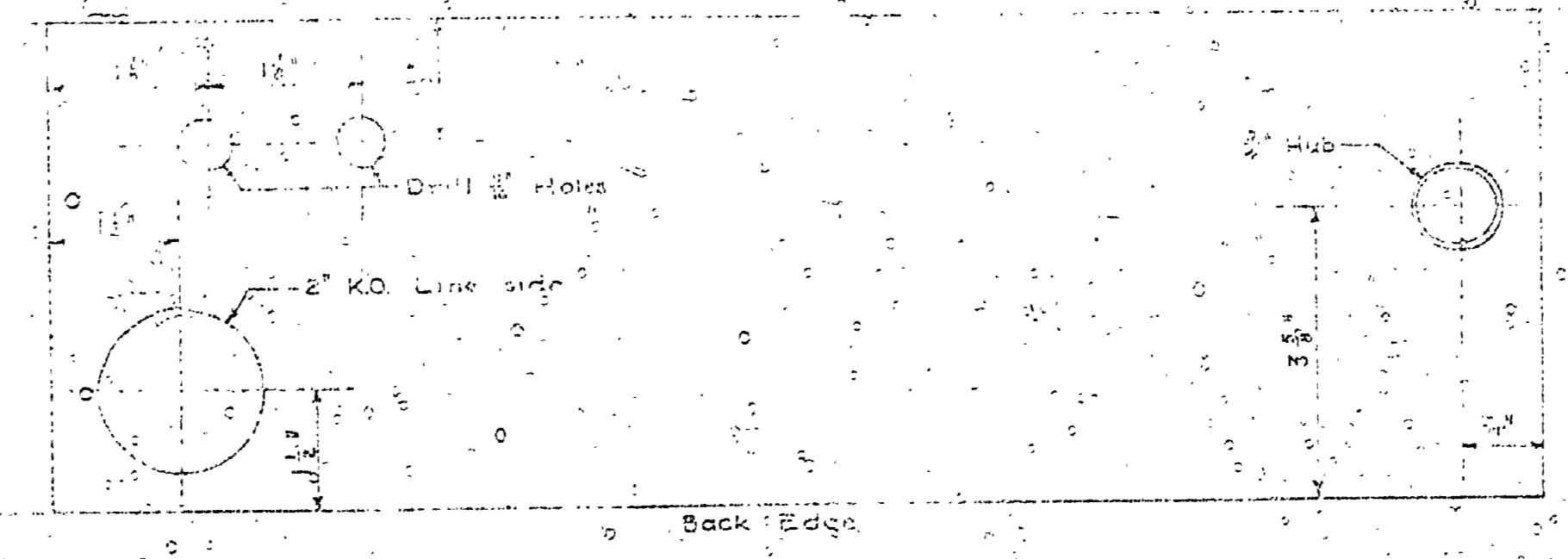
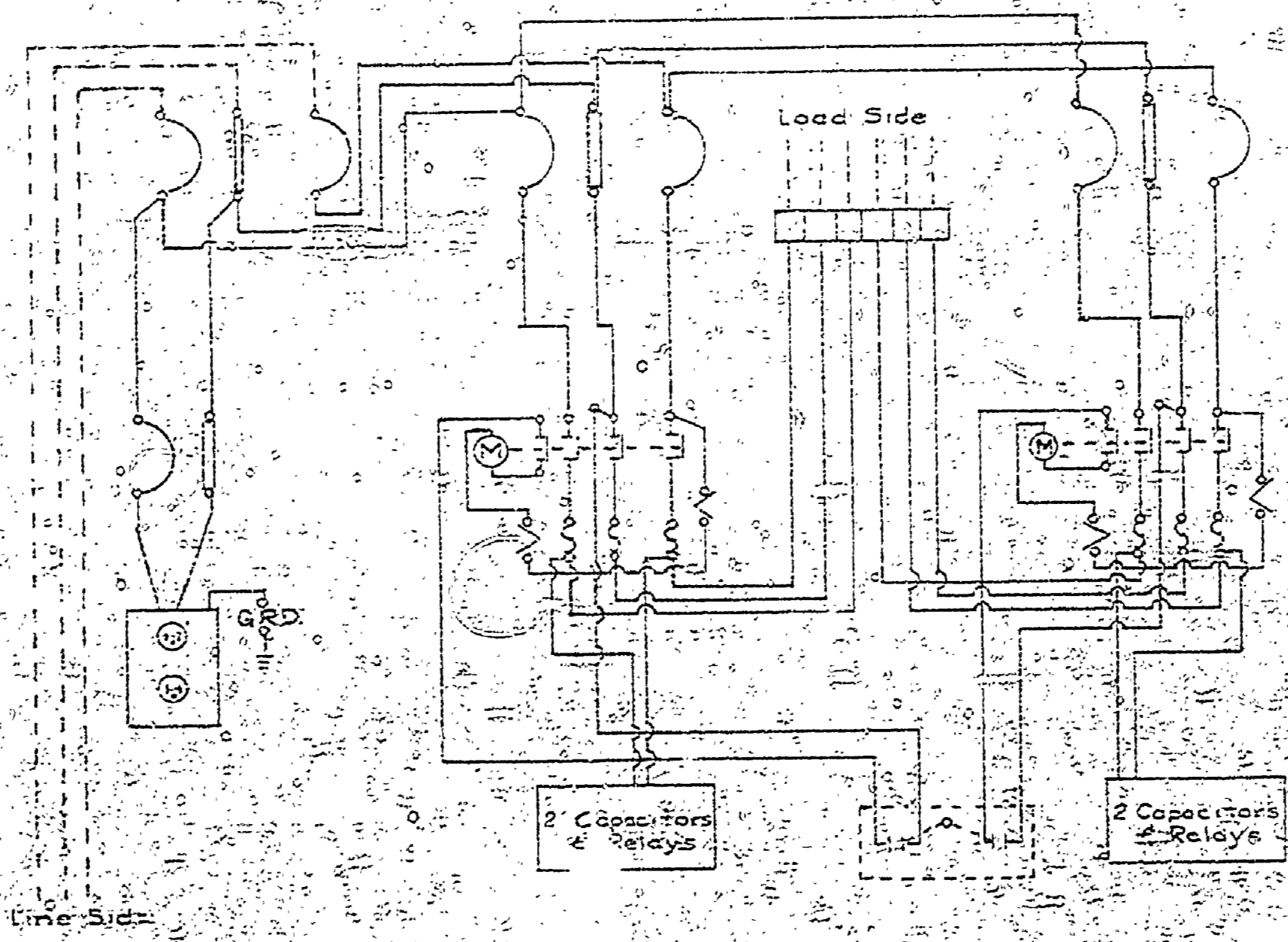


FRONT WITH COVER REMOVED
No Scale

CONTROL FOR DUAL PUMPS



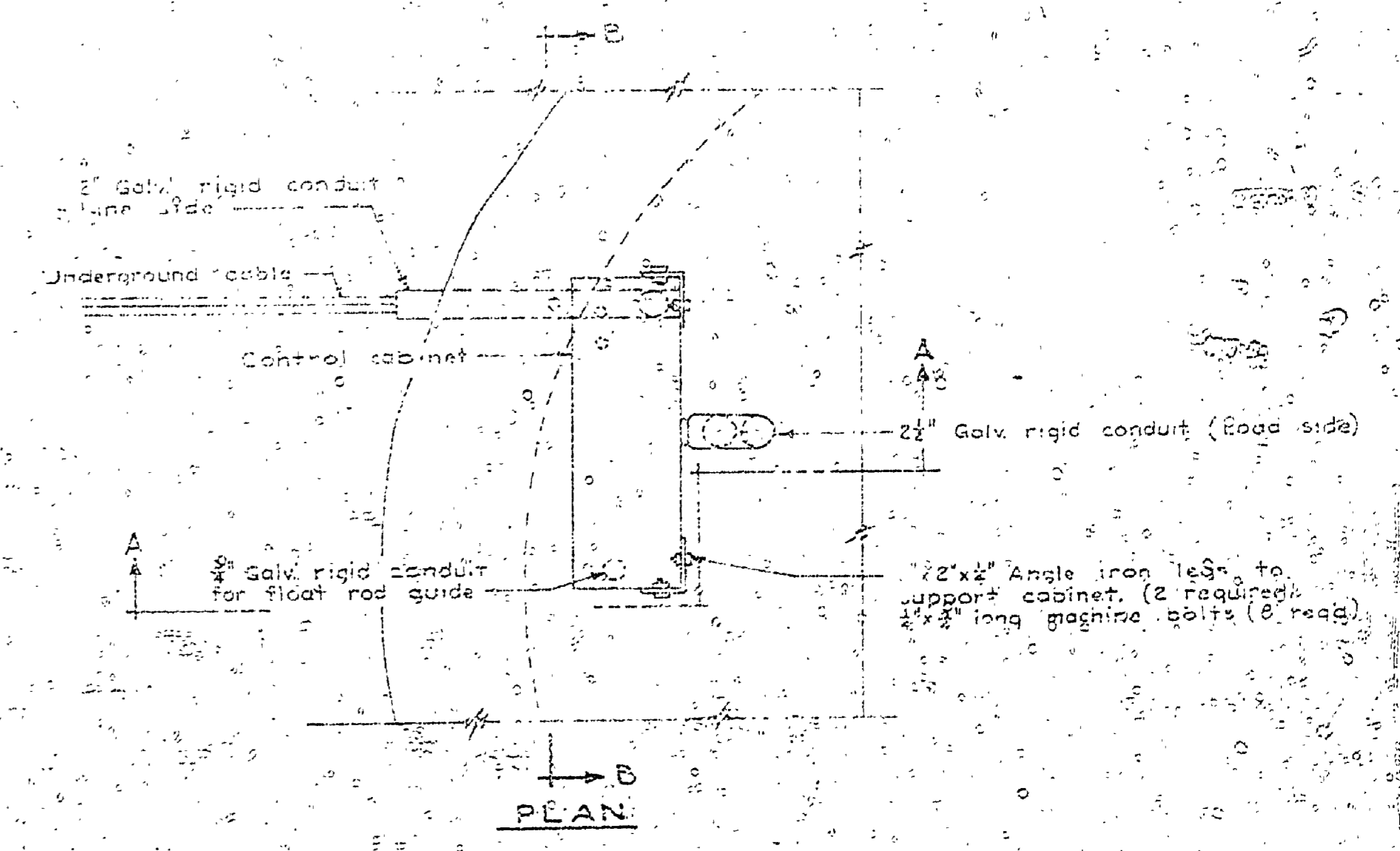
BOTTOM
No Scale



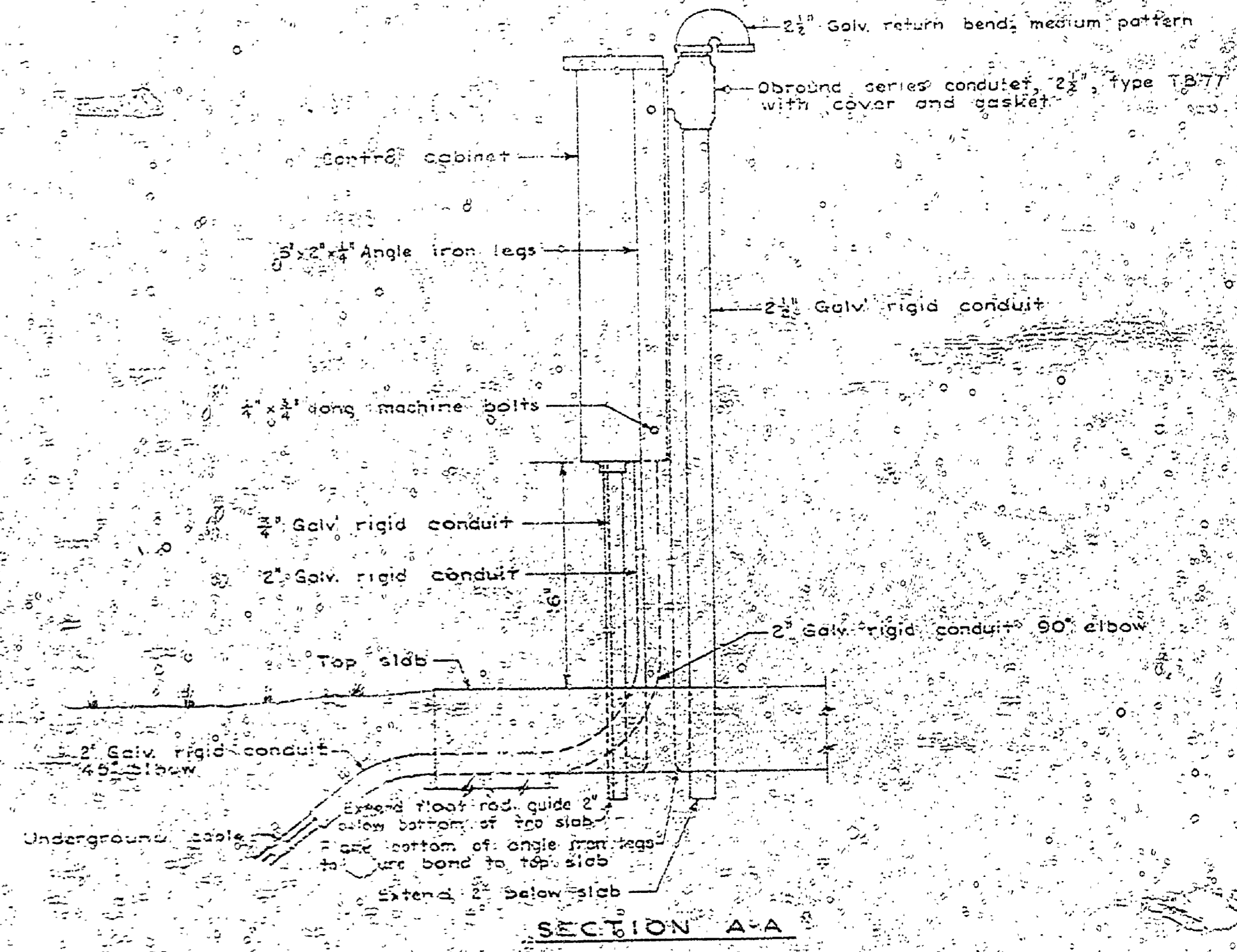
WIRING DIAGRAM
Not To Scale

NOTES
All numbers shown on component parts in control cabinet are standard. No substitutes will be accepted. All parts in this control box are to be of sufficient amperage to handle the pump motors furnished. Cabinet to be weatherproof. See Specifications for complete description.

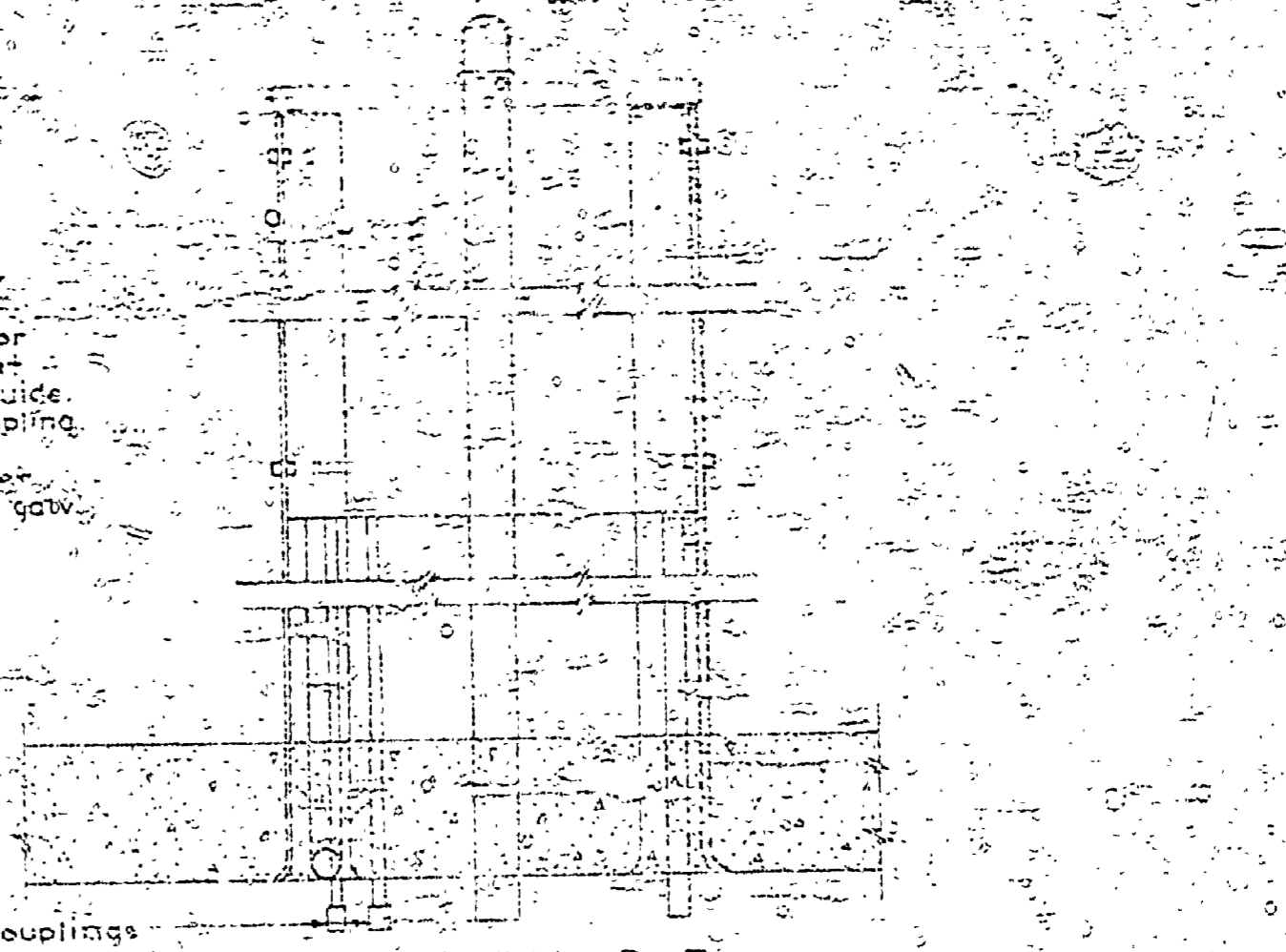
NOTES
Control pedestal should be immediately assembled and concrete poured. Reinforcing conduit for float rod to be plumb and straight and exactly centered over float guide. Connect 1/2\"/>



PLAN



SECTION A-A



SECTION B-B

PANEL PEDESTAL INSTALLATION DETAILS

SURVEYED BY	DESIGNED BY	DATE	NO.	DATE	BY	REVISIONS	NO.	DATE	BY	REVISIONS	MICHIGAN DEPARTMENT OF CONSERVATION	220 VOLT - 1 PHASE PUMP CONTROL PANEL	SHEET NO. 4 OF 4	MUSKEGON STATE PARK
	GALLOP												FOR PROJECT NO. PA-108-5124-300-031	SHEET 4 OF 4 PLAN NO. E114