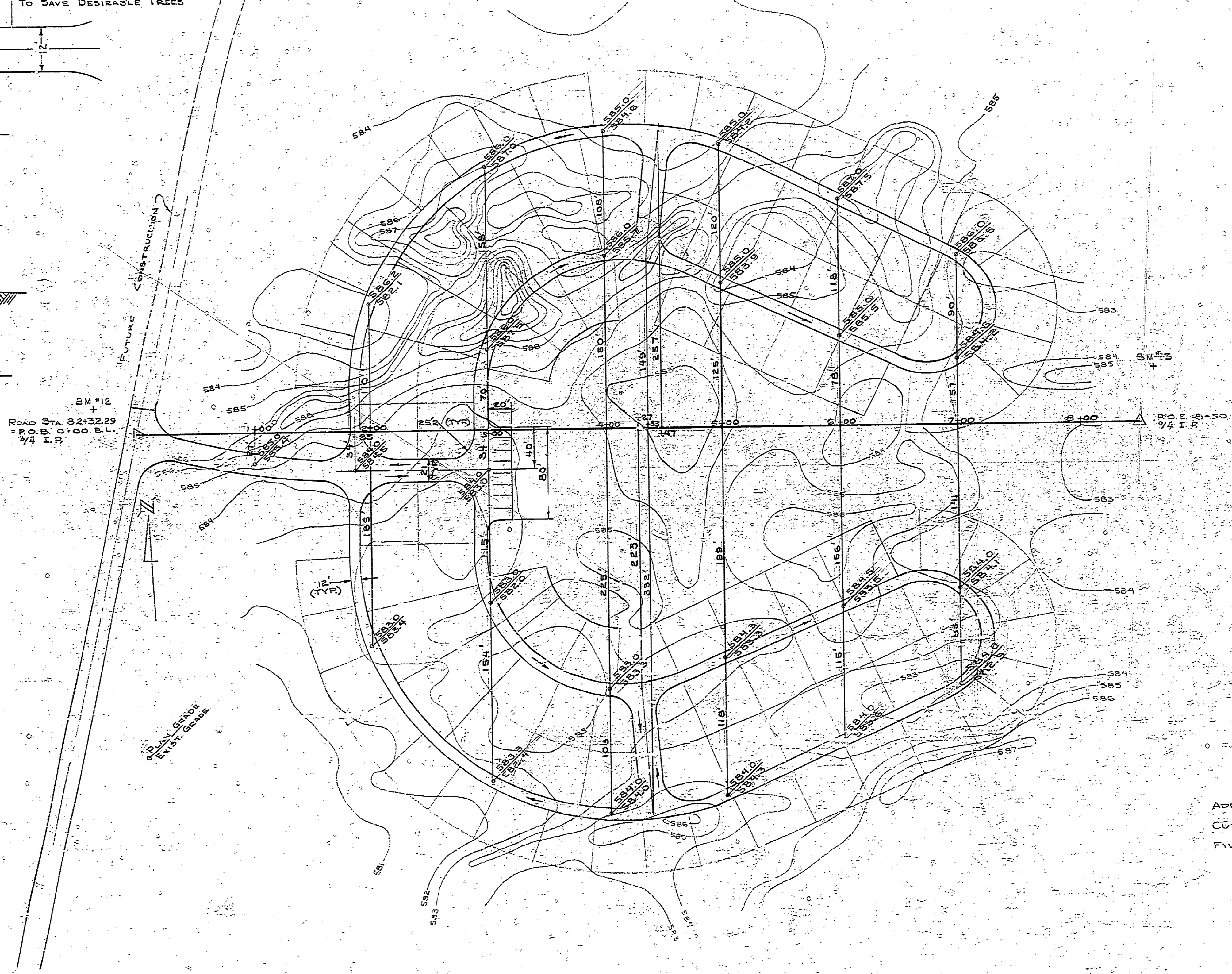
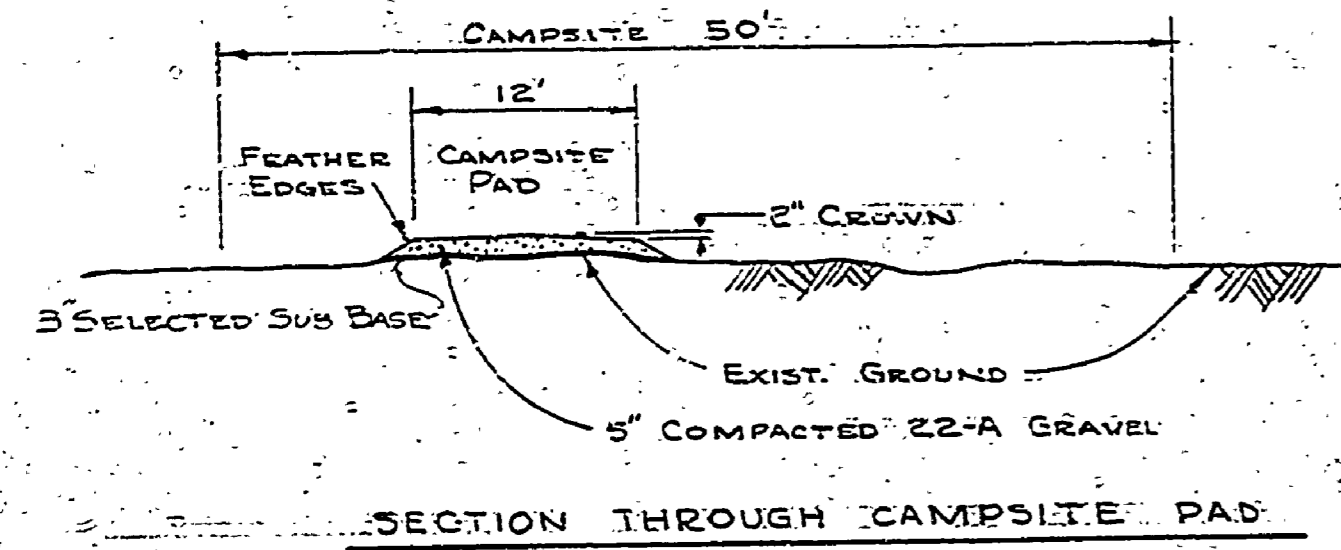
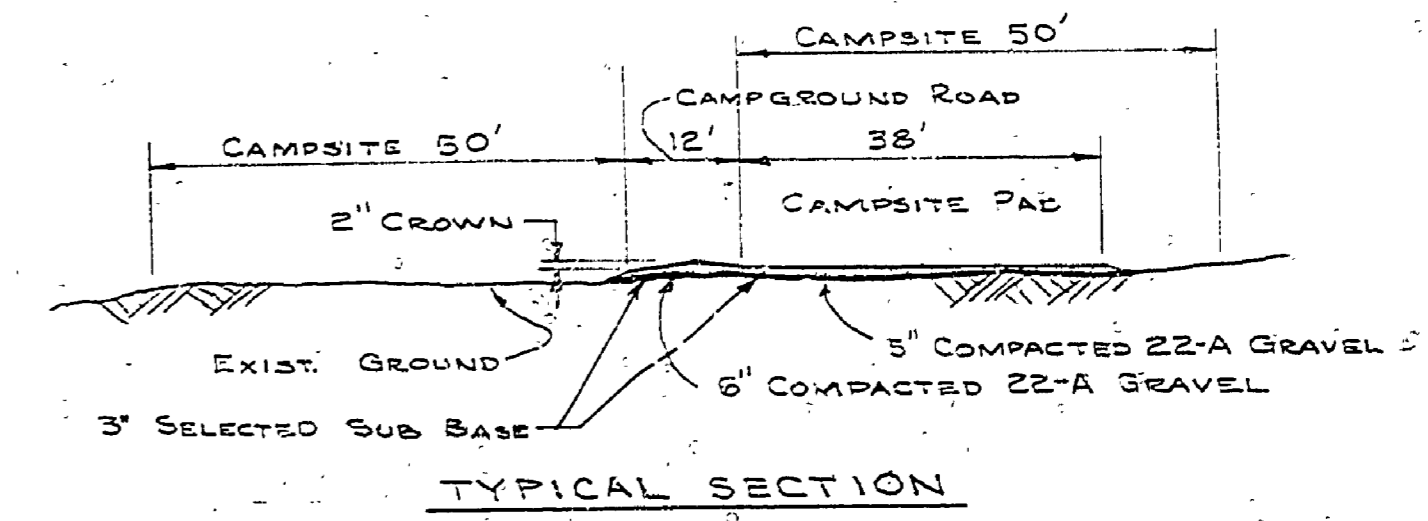
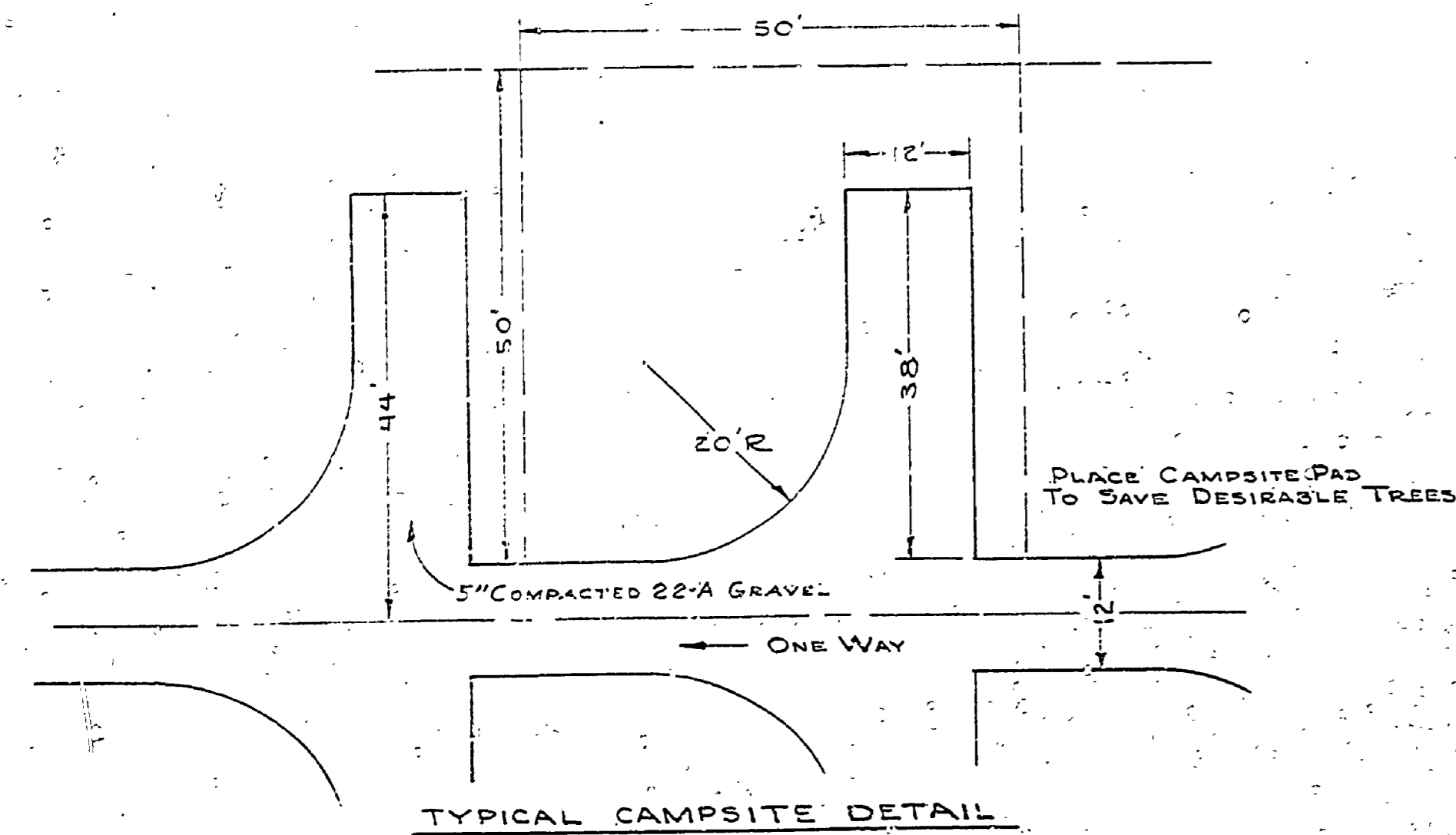


WITNESSES TO BASE LINE
 P 50 B - 0+00 3/4" x 30" IRON PIPE
 N 75° 43' W - 49.10' - 13" JACK PINE, BLAZE & SPIKE
 N 75° W - 47.45' - 10" JACK PINE, BLAZE & SPIKE
 N 88° W - 58.25' - 13" JACK PINE, BLAZE & SPIKE
 N 80° W - 44.3' - 6" JACK PINE, B.M. TAG, NUT & PK NAIL, B.M.#12 - ELEV. 585.11

P 50 B - 0+50 3/4" x 30" IRON PIPE
 N 22° 30' E - 51.47' - 8" JACK PINE, BLAZE & SPIKE
 N 22° E - 30.60' - 12" JACK PINE, BLAZE & SPIKE
 N 25° W - 11.8' - 12" JACK PINE, BLAZE & SPIKE

B.M.#13 ELEV. 585.29
 P-K, NUT & BRASS TAG, S.W. SIDE OF 10" JACK PINE
 47' LEFT OF STA. 8+63 BASELINE.



APPROXIMATE CAMPGROUND QUANTITIES:
 CUT 4,650 C.Y.
 FILL 5,550 C.Y.

SCALE: 1" = 50'

SURVEYED BY: A.V. McCaughin		DRAWN BY: J. YDMA		NO. DATE BY REVISIONS		NO. DATE BY REVISIONS		MICHIGAN DEPARTMENT OF CONSERVATION		CAMPGROUND LAYOUT & GRADES		SHEET NO. 4 OF 10		MUSKEGON STATE PARK CAMPGROUND DEVELOPMENT	
DESIGNED BY:		CHECKED BY:		1.		3.		FOR PROJECT NO. PA108-5124-300-031		SHEET 4 OF 10		PLAN NO. E-113			
DATE:		DATE:		2.		4.									