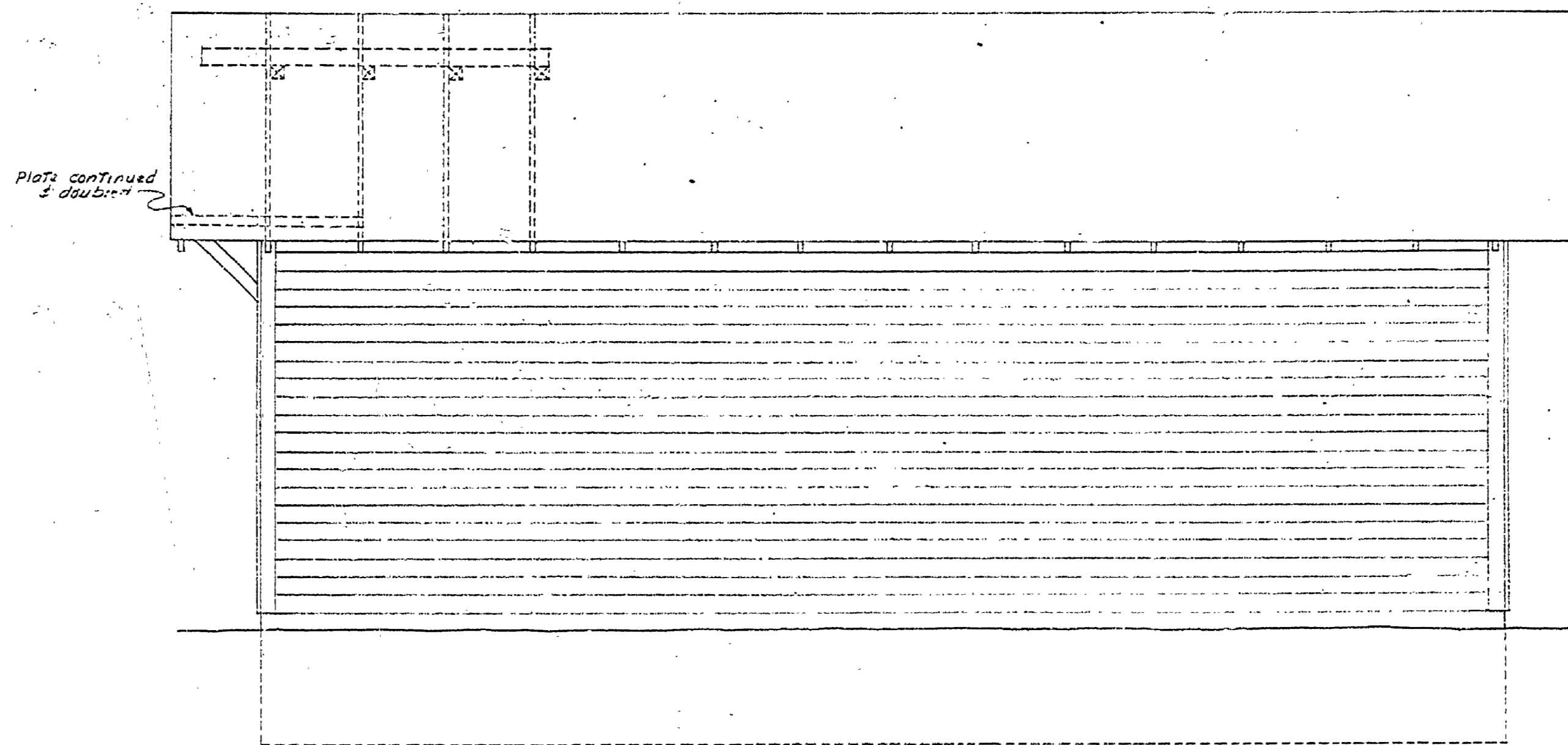
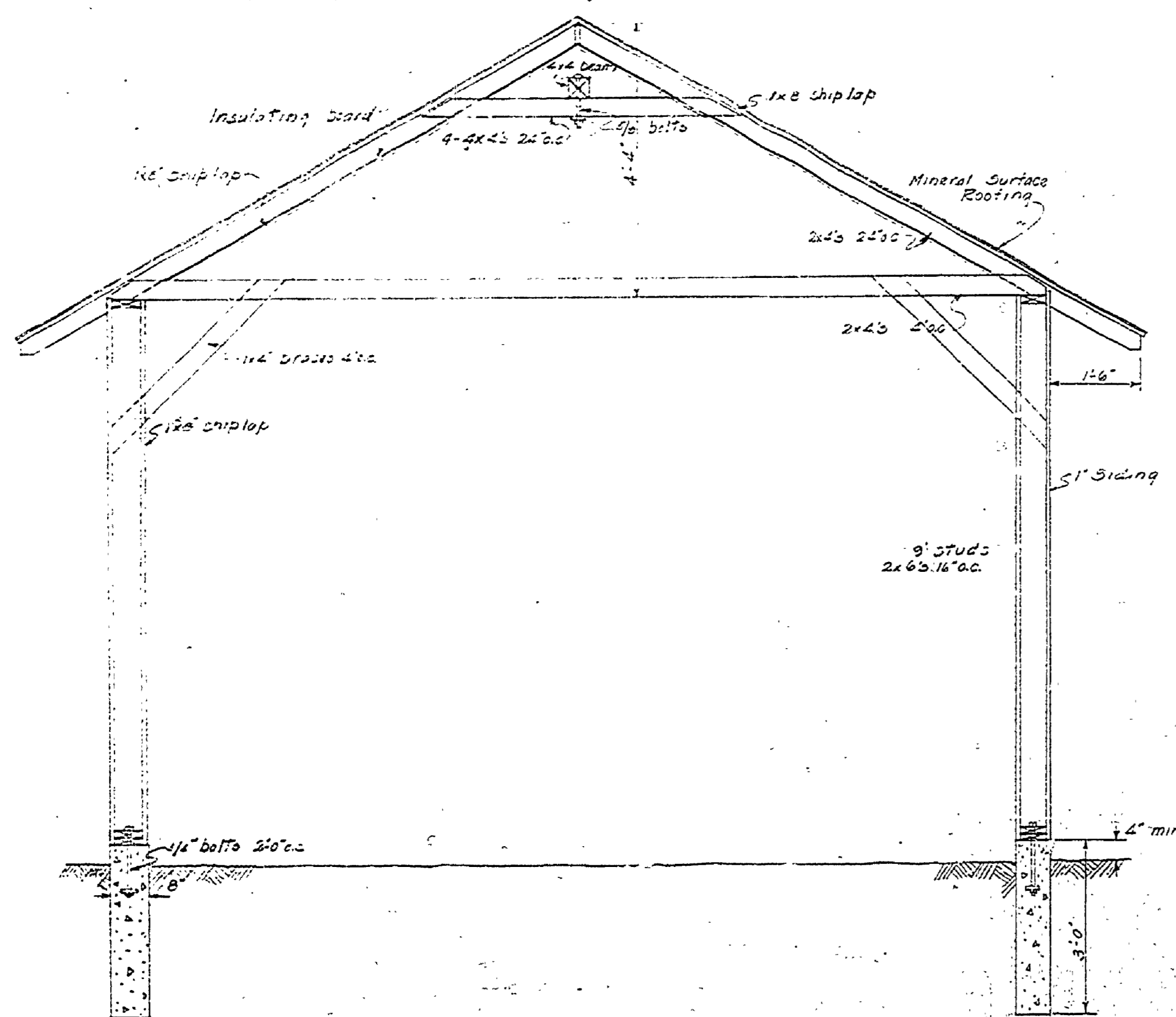


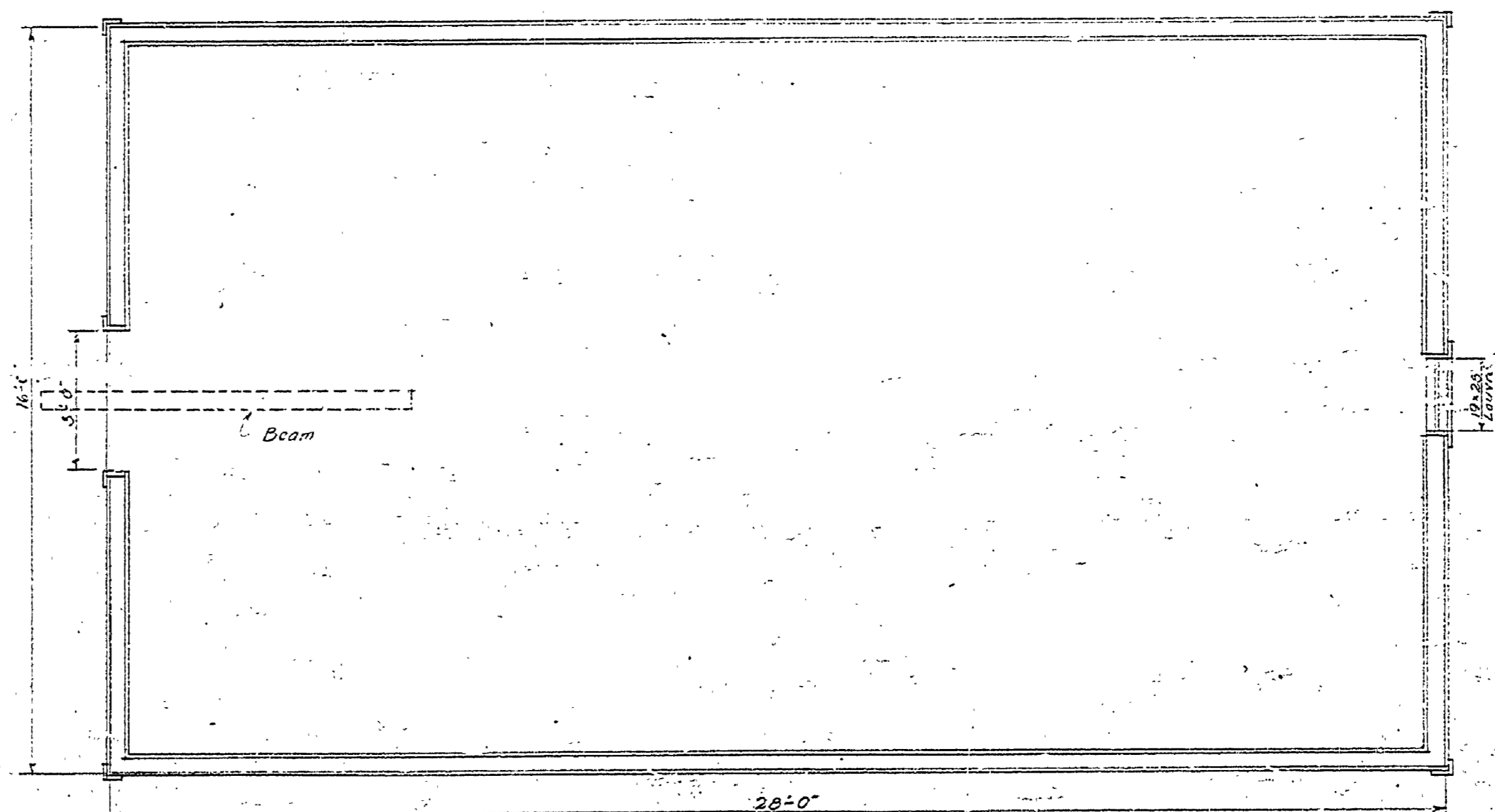
FRONT ELEVATION
Scale 3/8" = 1'-0"



SIDE ELEVATION
Scale 3/8" = 1'-0"



CROSS SECTION
Scale 1/4" = 1'-0"



PLAN
Scale 1/4" = 1'-0"

NOTE:
Present ice house 18'x18'
Some materials to be salvaged and used
in new building.

RECEIVED
MICHIGAN
APR 18 1947

A-96

INSURANCE No. 25
USED AS GARAGE 1947

U.S. DEPARTMENT OF THE INTERIOR		STATE OF MICHIGAN	
NATIONAL PARK SERVICE		MUSKEGON STATE PARK S.P.#5	
STATE PARK		PROPOSED ICE HOUSE	
EMERGENCY		DATE 9-7-34 SCALE AS SHOWN	
CONSERVATION WORK		DRAWN BY R.C. CHRISTIAN DATE	
Checked by	DISTRICT INSPECTOR	PROCUREMENT OFFICER	ALLOTMENT AVAILABLE \$
Date		Submitted by	CAMP SUPERINTENDENT
Recommended for construction	DISTRICT OFFICE ENGR.	Approved by	SUP'OR STATE PARKS
Date		Date	
Approved for construction	DISTRICT OFFICE	Approved by	FILE NO. SPS-27
Date		Date	