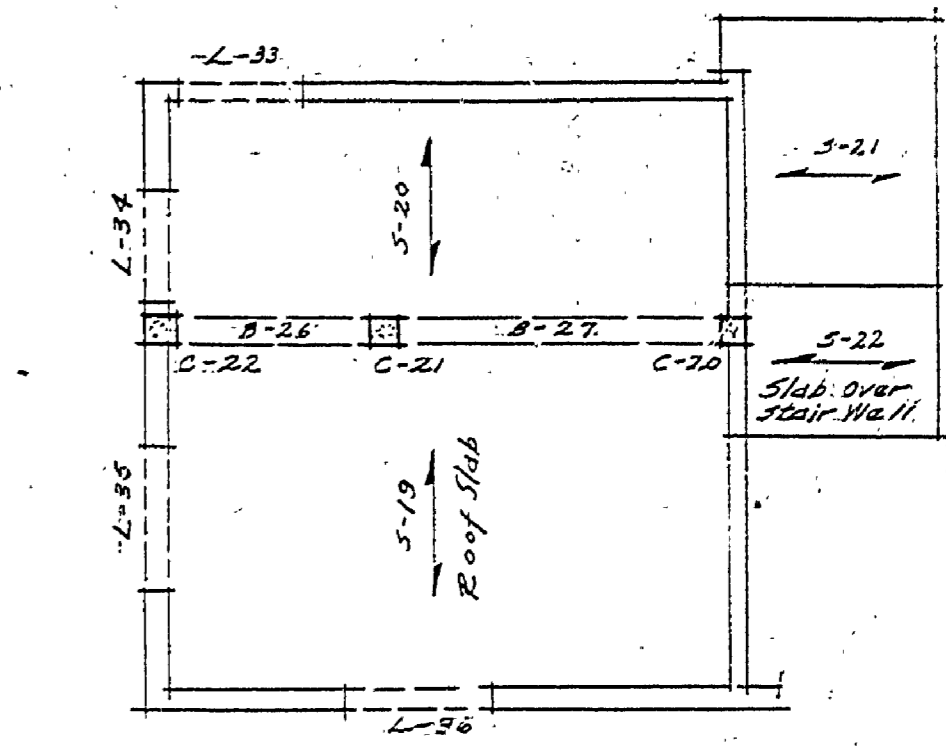


STRUCTURAL FRAMING PLAN
Scale 1/8" = 1'-0"

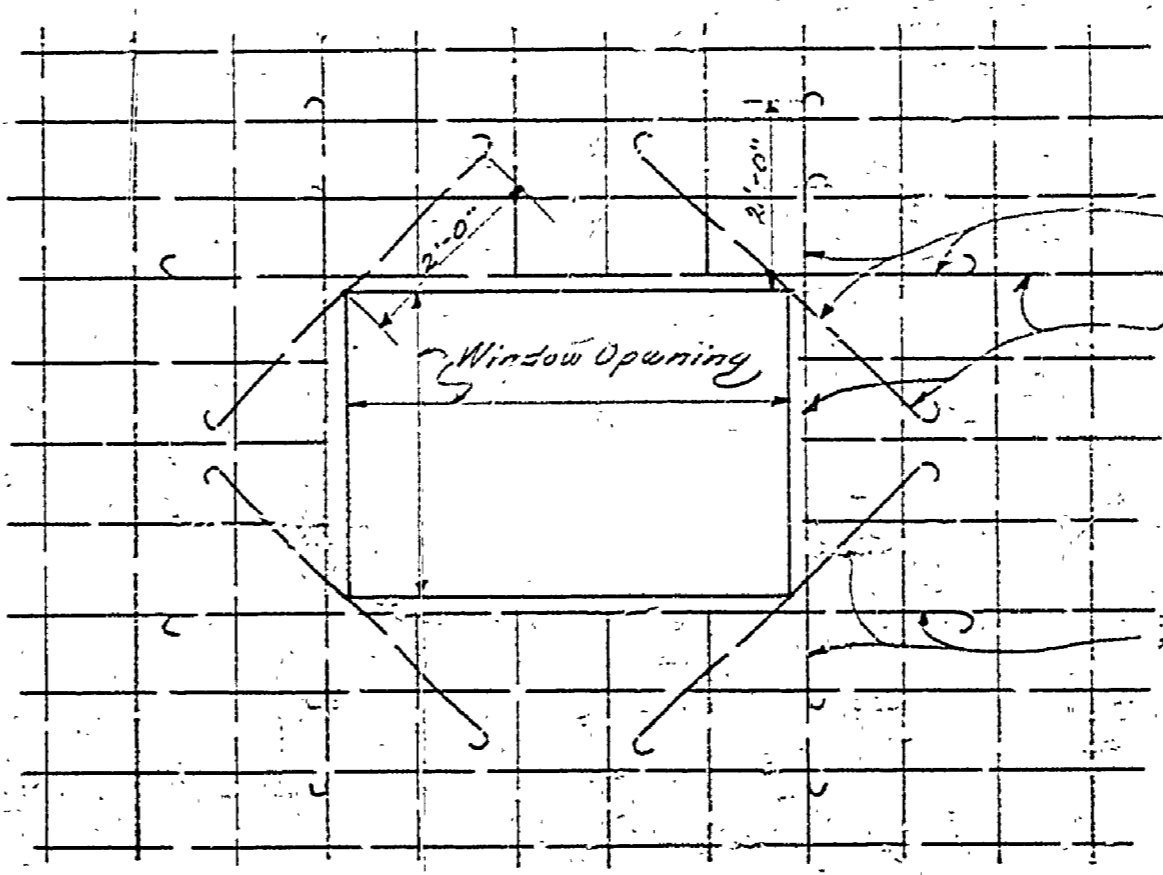


SECOND FLOOR FRAMING
Scale 1/8" = 1'-0"

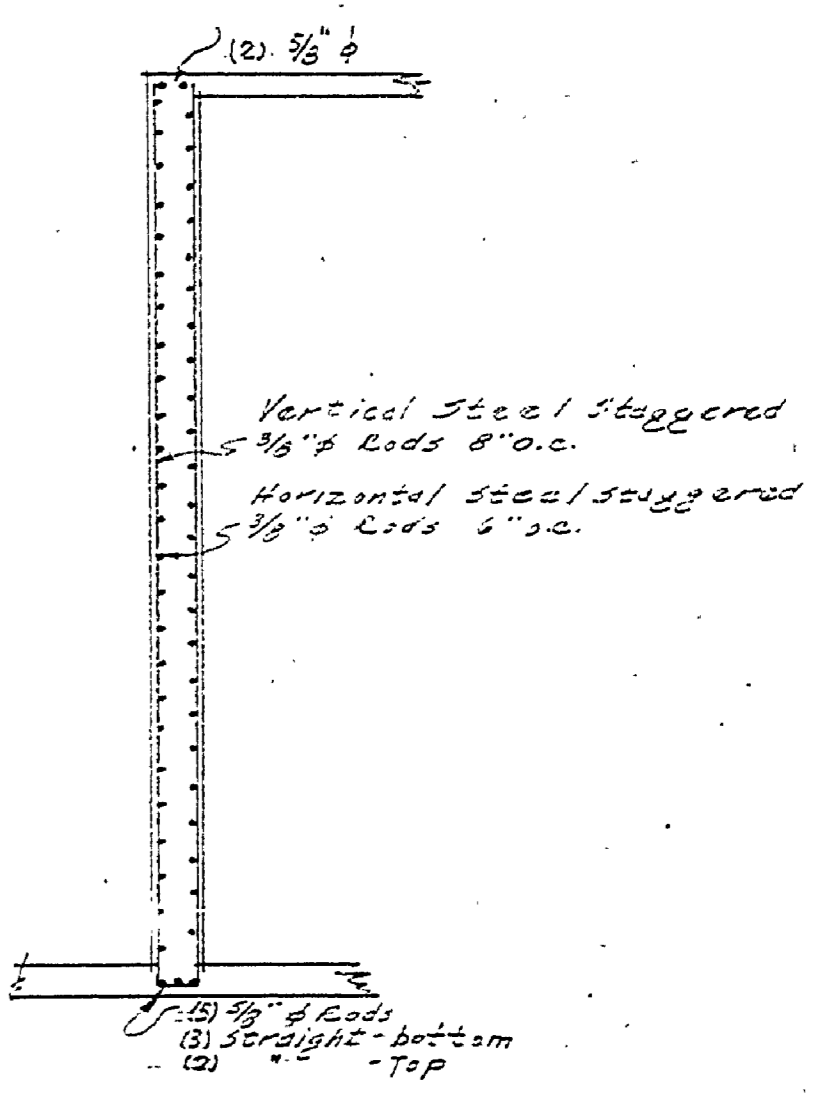
LINTEL SCHEDULE				
LINTEL NO.	SPAN	NUMBER SIZE ROCS	LENGTH	STEEL LENGTH
L-1	3'-0"	(2) 1/2" φ	4'-6"	
L-2	3'-1 3/4"	(2) 1/2" φ	4'-5"	
L-3	4'-7 3/4"	(2) 3/8" φ	3'-5"	
L-4	6'-3 3/8"	(3) 3/8" φ	9'-6"	A+38"
L-5	6'-3 3/8"	(3) 3/8" φ	9'-5"	"
L-6	6'-3 3/8"	(3) 3/8" φ	9'-5"	"
L-7	3'-0"	(2) 1/2" φ	4'-4"	
L-8	3'-0"	(2) 1/2" φ	4'-4"	
L-9	6'-3 3/8"	(3) 3/8" φ	9'-6"	A+38"
L-10	12'-6 3/8"	(5) 1 1/8" φ	15'-7"	A+75 1/2"
L-11	4'-7 3/4"	(3) 1" φ	7'-2"	A+30"
L-12	3'-0"	(2) 1/2" φ	4'-6"	
L-13	3'-0"	(2) 1/2" φ	4'-6"	
L-14	3'-0"	(2) 1/2" φ	4'-6"	
L-15	3'-0"	(2) 1/2" φ	4'-6"	
L-16	6'-1 1/2"	(3) 3/8" φ	9'-6"	A+38"
L-17	12'-3 3/8"	(5) 1 1/8" φ	15'-7"	A+72"
L-18	3'-0"	(2) 1/2" φ	4'-6"	
L-19	3'-0"	(2) 1/2" φ	4'-6"	
L-20	12'-6 3/8"	(5) 1 1/8" φ	15'-7"	A+72"
L-21	6'-3 3/8"	(3) 3/8" φ	9'-6"	A+38"
L-22	2'-2"	(2) 1/2" φ	3'-6"	
L-23	5'-4"	(3) 3/8" φ	9'-6"	A+39"
L-24	3'-0"	(2) 1/2" φ	4'-6"	
L-25	5'-6"	(2) 3/8" φ	7'-0"	
L-26	6'-0"	(2) 3/8" φ	7'-6"	
L-27	3'-0"	(2) 1/2" φ	4'-6"	
L-28	2'-2"	(2) 1/2" φ	3'-6"	
L-29	3'-0"	(2) 1/2" φ	4'-6"	
L-30	6'-3 3/8"	(3) 3/8" φ	9'-6"	
L-31	6'-3 3/8"	(3) 3/8" φ	9'-6"	
L-32	3'-0"	(2) 3/4" φ	4'-6"	
L-33	3'-0"	(2) 1/2" φ	4'-6"	
L-34	4'-7 3/4"	(3) 3/8" φ	6'-6"	
L-35	6'-1 1/8"	(2) 3/4" φ	9'-6"	
L-36	6'-1 1/8"	(2) 3/4" φ	9'-6"	

SLAB SCHEDULE					SHORT WAY				LONG WAY				SHORT WAY	LONG WAY	
SLAB NO.	THICKNESS	LENGTH OF STEEL REOD	STEEL ONE WAY	STEEL TWO WAYS	TEMPERATURE STEEL (Staggered)		LENGTH				STRAIGHT BARS	STRAIGHT BARS			
				SHORT WAY	LONG WAY	TOP OF SLAB	BOTTOM OF SLAB	A	B	C	D	A	B	C	D
S-1	4 1/2"	11'-0"	1/2" φ - 7 1/2" o.c.			3/8" φ - 18" o.c.	3/8" φ - 18" o.c.	18'-8"							
S-2	5 1/2"	16'-6"	1/2" φ - 5 1/2" o.c.			3/8" φ - 18" o.c.	3/8" φ - 18" o.c.	26'-6"							
S-3	4"	19'-0"	3/8" φ - 4 1/2" o.c.			3/8" φ - 18" o.c.	3/8" φ - 18" o.c.	18'-0"							
S-4	4 1/2"	3'-0"	3/8" φ - 6" o.c.			None	None								
S-5	7"		3/8" φ - 6 1/2" o.c.			3/8" φ - 18" o.c.	3/8" φ - 18" o.c.	24'-4"	8'-0"	10'-3"	3'-6"	4" o.c.			
S-6	4 1/2"	14'-0"	1/2" φ - 7 1/2" o.c.			3/8" φ - 18" o.c.	3/8" φ - 18" o.c.	24'-4"							
S-7	4"	9'-0"	3/8" φ - 5 1/2" o.c.			3/8" φ - 18" o.c.	3/8" φ - 18" o.c.	11'-0"							
S-8	4"	10'-2"	3/8" φ - 4 1/2" o.c.			3/8" φ - 18" o.c.	3/8" φ - 18" o.c.	21'-6"							
S-9	8"		3/8" φ - 7" o.c.	1/2" φ - 4 1/2" o.c.	3/8" φ - 18" o.c.	None	None	21'-6"	3'-5"	12'-8"	11'-0"	5" o.c.	6'-6"	22'-6 1/2"	5'-5" 5" o.c.
S-10	8"		3/8" φ - 7" o.c.	1/2" φ - 4 1/2" o.c.	3/8" φ - 18" o.c.	None	None	32'-0"	12'-3 1/2"	14'-5"	12'-3 1/2"	5" o.c.	6'-4 1/2"	21'-11"	6'-4 1/2" 5" o.c.
S-11	6"		3/8" φ - 7" o.c.	1/2" φ - 4 1/2" o.c.	3/8" φ - 18" o.c.	None	None	24'-6"	11'-0"	12'-8"	3'-8"	5" o.c.	6'-4 1/2"	21'-11"	6'-4 1/2" 5" o.c.
S-11A	8"		3/8" φ - 7" o.c.	1/2" φ - 4 1/2" o.c.	3/8" φ - 18" o.c.	None	None	23'-8"	11'-0"	12'-8"	4'-8"	5" o.c.	6'-4 1/2"	21'-11"	6'-4 1/2" 5" o.c.
S-12	8"		3/8" φ - 6 1/2" o.c.	3/8" φ - 6 1/2" o.c.	3/8" φ - 18" o.c.	None	None	21'-0"	4'-4 1/2"	15'-7 1/2"	12'-0"	5" o.c.	5'-5"	17'-4"	5'-5" 5" o.c.
S-13	7 1/2"		3/8" φ - 6" o.c.			3/8" φ - 18" o.c.	3/8" φ - 18" o.c.	18'-8"	3'-5"	10'-4 1/2"	8'-4"	4 1/2" o.c.			
S-14	4"	13'-6"	3/8" φ - 5" o.c.			3/8" φ - 18" o.c.	3/8" φ - 18" o.c.	36'-0"							
S-15	4 1/2"	10'-10"	1/2" φ - 7 1/2" o.c.			3/8" φ - 18" o.c.	3/8" φ - 18" o.c.	19'-3"							
S-16	5 1/2"	22'-8"	1/2" φ - 5 1/2" o.c.			3/8" φ - 18" o.c.	3/8" φ - 18" o.c.	28'-8"							
S-17	4 1/2"	10'-2"	1/2" φ - 7 1/2" o.c.			3/8" φ - 18" o.c.	3/8" φ - 18" o.c.	28'-8"							
S-18	3 1/2"	10'-0"	3/8" φ - 6 1/2" o.c.			3/8" φ - 18" o.c.	3/8" φ - 18" o.c.	31'-10"							
S-19	7"		3/8" φ - 6 1/2" o.c.			3/8" φ - 18" o.c.	3/8" φ - 18" o.c.	24'-4"	8'-0"	10'-3"	3'-4"	4" o.c.			
S-20	4 1/2"	14'-0"	1/2" φ - 7 1/2" o.c.			3/8" φ - 18" o.c.	3/8" φ - 18" o.c.	27'-2"							

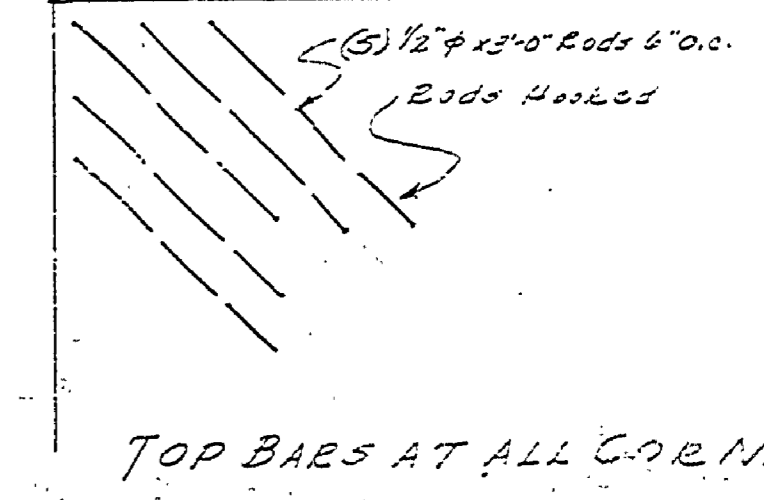
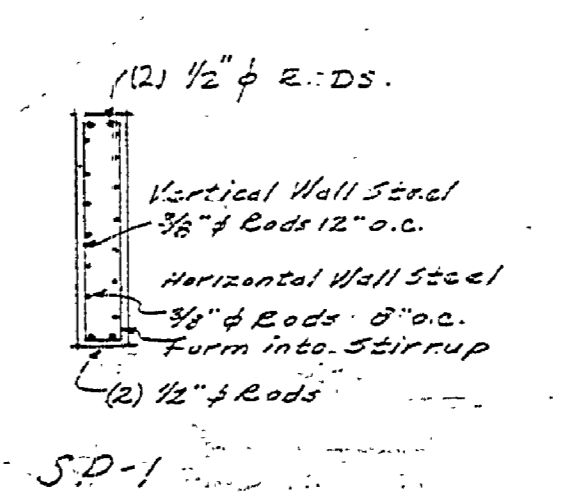
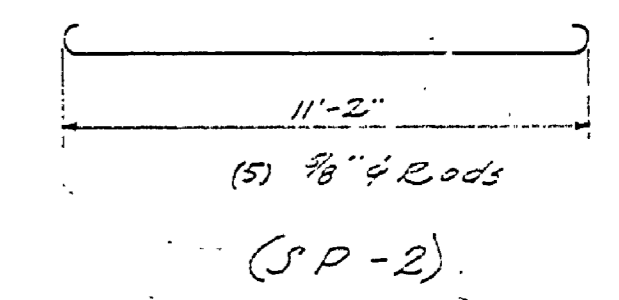
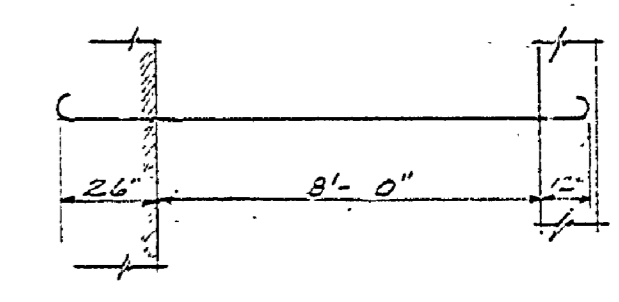
COLUMN SCHEDULE					
COL. NO.	COLUMN SIZE	FOOTING SIZE	VERTICAL STEEL	STEEL TIES	FOOTING STEEL
C-1	2'-0" x 4'-0"	4'-0" x 5'-0" x 12"	(4) 3/8" φ	1/2" φ - 8" o.c.	1/2" φ - 6" o.c.
C-2	2'-0" x 4'-0"	4'-4" x 6'-4" x 12"	(4) 3/8" φ	1/2" φ - 8" o.c.	1/2" φ - 6" o.c.
C-3	2'-0" x 4'-0"	4'-4" x 6'-4" x 12"	(4) 3/8" φ	1/2" φ - 8" o.c.	1/2" φ - 6" o.c.
C-4	2'-0" x 4'-0"	4'-0" x 6'-0" x 12"	(4) 3/8" φ	1/2" φ - 8" o.c.	1/2" φ - 6" o.c.
C-5	2'-0" x 4'-0"	4'-0" x 6'-0" x 12"	(4) 3/8" φ	1/2" φ - 8" o.c.	1/2" φ - 6" o.c.
C-6	2'-0" x 2'-0"	See Plan	(4) 1" φ	1/2" φ - 8" o.c.	1/2" φ - 4" o.c.
C-7	1'-2" x 2'-0"	2'-2" x 3'-0" x 12"	(4) 3/8" φ	1/2" φ - 8" o.c.	1/2" φ - 4" o.c.
C-8	2'-0" x 4'-0"	4'-0" x 6'-0" x 12"	(4) 3/8" φ	1/2" φ - 8" o.c.	1/2" φ - 6" o.c.
C-9	2'-0" x 4'-0"	5'-2" x 6'-4" x 12"	(4) 3/8" φ	1/2" φ - 8" o.c.	1/2" φ - 6" o.c.
C-10	2'-0" x 4'-0"	4'-4" x 6'-4" x 12"	(4) 3/8" φ	1/2" φ - 8" o.c.	1/2" φ - 6" o.c.
C-11	2'-0" x 3'-8"	4'-0" x 5'-8" x 12"	(4) 3/8" φ	1/2" φ - 8" o.c.	1/2" φ - 6" o.c.
C-12	1'-2" x 1'-6"	See Plan	(4) 3/8" φ	1/2" φ - 12" o.c.	1/2" φ - 4" o.c.
C-13	1'-2" x 1'-2"	3'-0" x 3'-0" x 12"	(4) 3/8" φ	1/2" φ - 12" o.c.	1/2" φ - 4" o.c.
C-14	1'-8" x 2'-0"	3'-8" x 4'-0" x 12"	(4) 3/8" φ	1/2" φ - 8" o.c.	1/2" φ - 4" o.c.
C-15	1'-2" x 2'-0"	3'-2" x 4'-0" x 12"	(4) 3/8" φ	1/2" φ - 8" o.c.	1/2" φ - 4" o.c.
C-16	1'-2" x 2'-0"	3'-2" x 4'-0" x 12"	(4) 3/8" φ	1/2" φ - 8" o.c.	1/2" φ - 4" o.c.
C-17	1'-0" x 1'-0"	2'-4" x 2'-4" x 12"	(4) 3/8" φ	1/2" φ - 8" o.c.	1/2" φ - 4" o.c.
C-18	1'-0" x 1'-2"	2'-4" x 2'-8" x 12"	(4) 3/8" φ	1/2" φ - 8" o.c.	1/2" φ - 4" o.c.
C-19	1'-0" x 1'-0"	2'-4" x 2'-4" x 12"	(4) 3/8" φ	1/2" φ - 8" o.c.	1/2" φ - 4" o.c.
C-20	1'-0" x 1'-0"		(4) 3/8" φ	1/2" φ - 8" o.c.	
C-21	1'-0" x 1'-2"		(4) 3/8" φ	1/2" φ - 8" o.c.	
C-22	1'-0" x 1'-0"		(4) 3/8" φ	1/2" φ - 8" o.c.	



TYPICAL WALL REINFORCING
(Around Wall Openings)
Note: Door opening similar



SPANDREL BEAM-2
Scale 3/8" = 1'-0"



TOP BARS AT ALL CORNERS

MICHIGAN DEPARTMENT OF CONSERVATION STATE PARKS DIVISION

MUSKEGON STATE PARK
MUSKEGON BATH HOUSE

DESIGNED BY: J. W. ...
DRAWN BY: ...
CHECKED BY: ...

APPROVED: CHIEF, PARKS DIVISION DATE: ...
APPROVED: INSPECTOR DATE: ...
APPROVED: DATE: ...

A-103