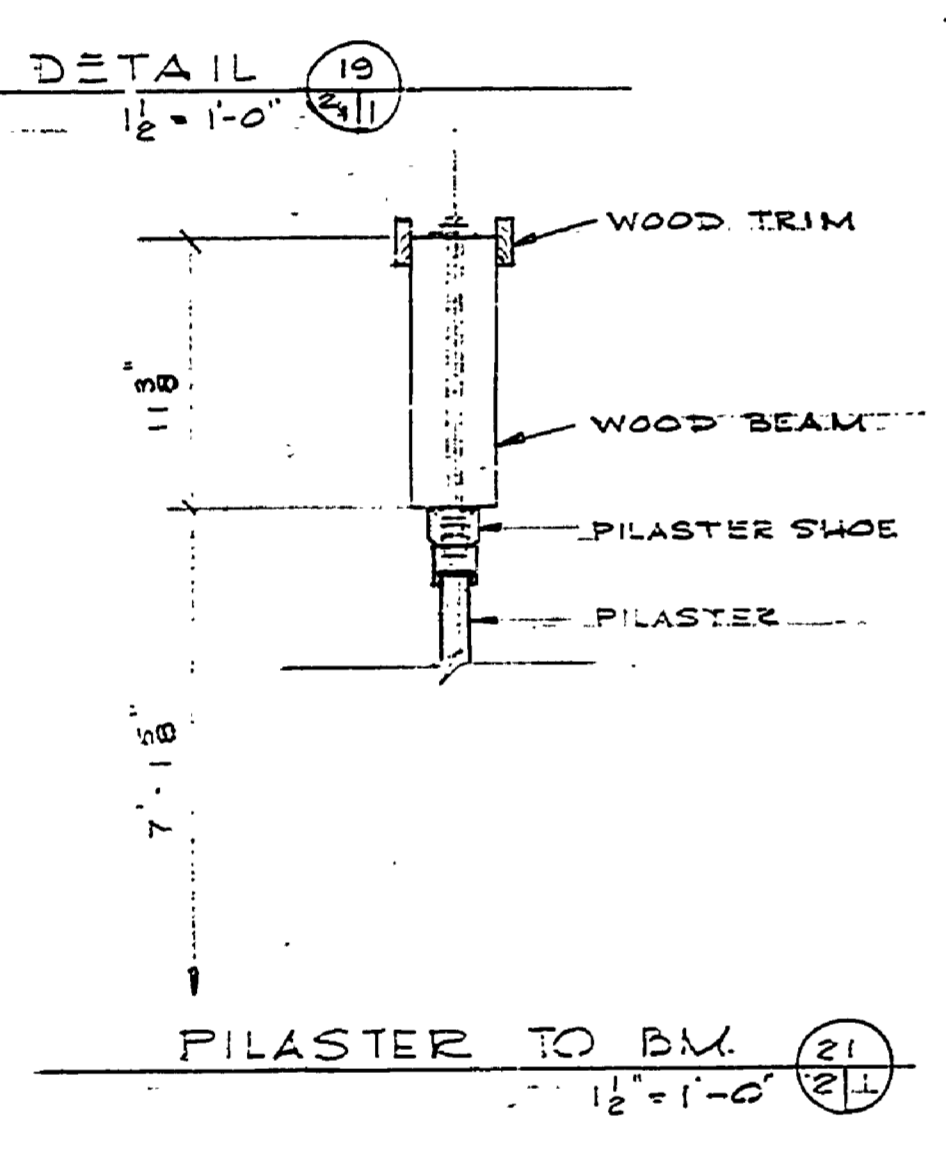
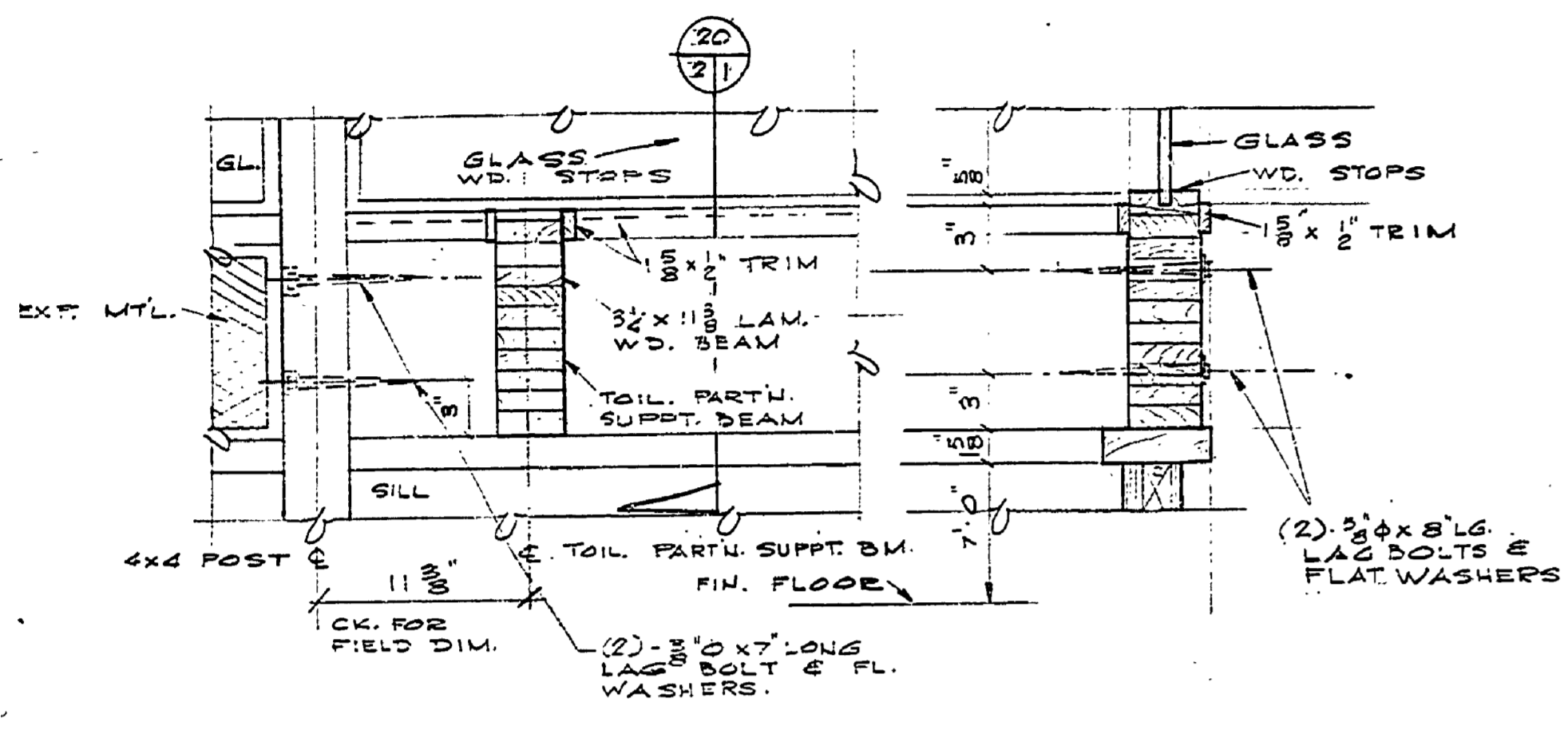


# HOFFMASTER STATE PARK TOILET & SHOWER BUILDING

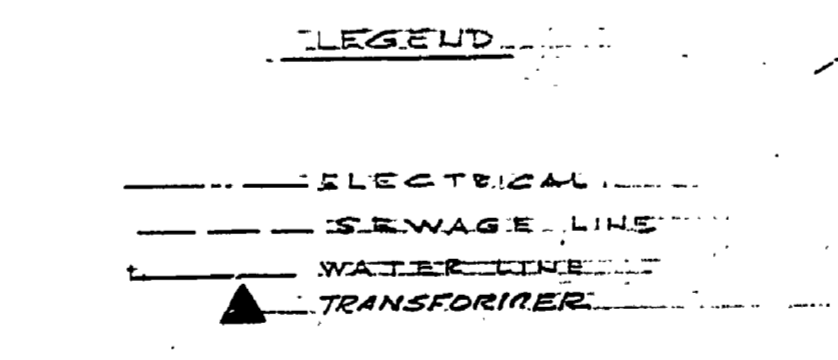
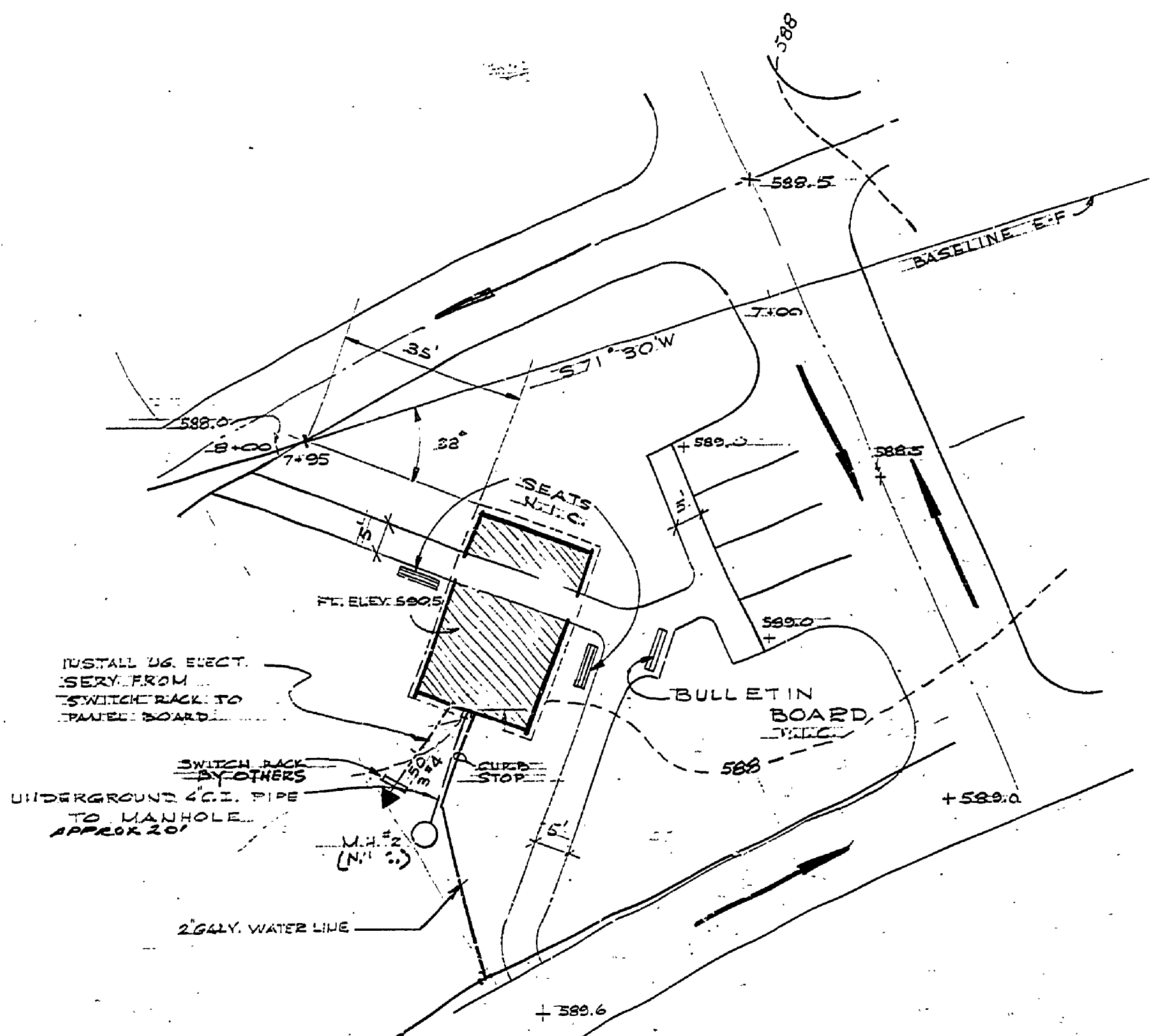


**BENCH MARKS**

B.M. #11 ELEV. 592.73  
N. ROOT 18" WHITE PINE 3' RIGHT STA. 0+29  
BASELINE "B-F"

B.M. #12 ELEV. 591.88  
N. ROOT OF 25" MAPLE 25' LEFT STA. 9+18  
BASELINE "E-F"

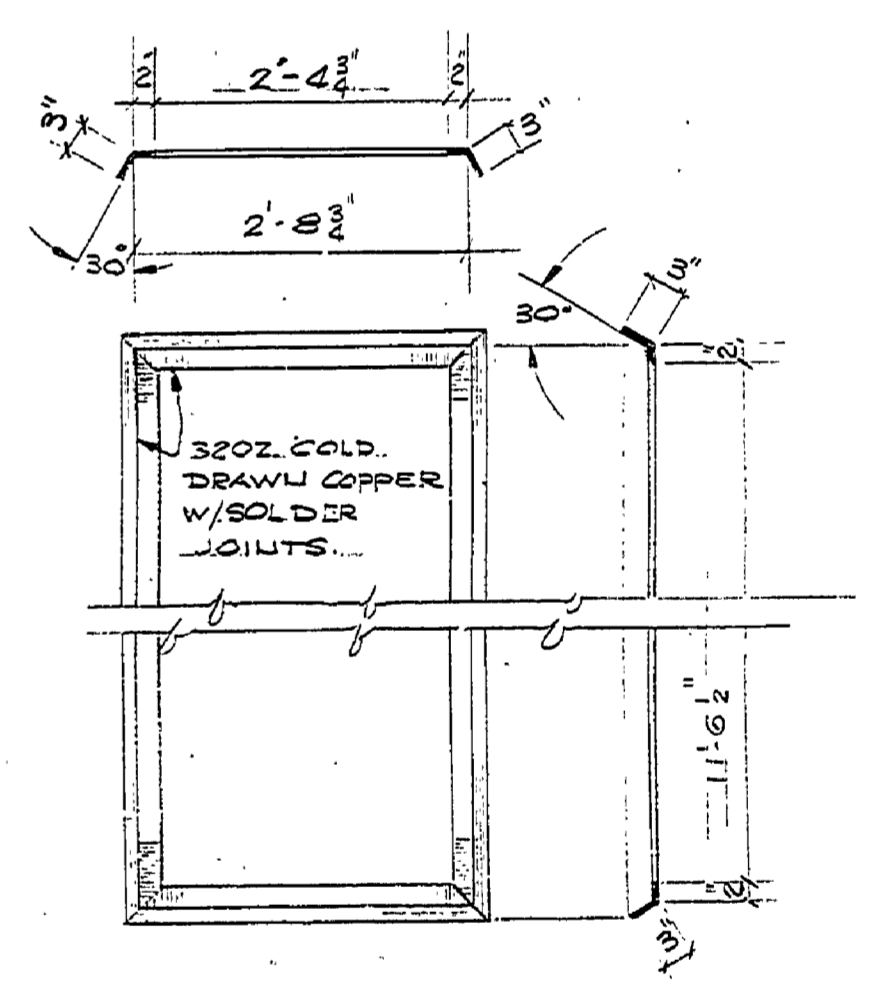
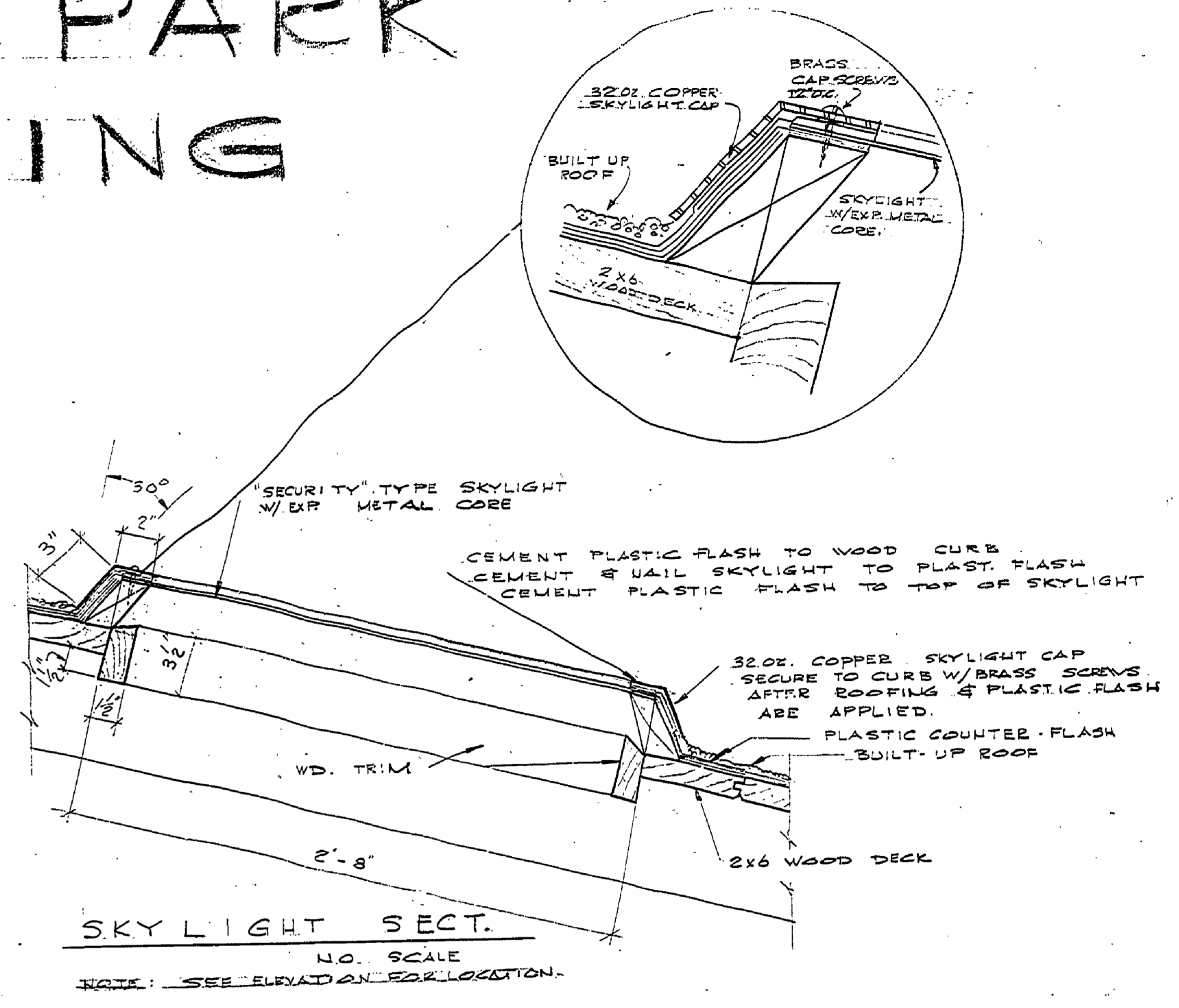
NOTE: SEE CAMPGROUND ENGINEERING PLANS FOR GEOGRAPHIC LOCATIONS OF ABOVE BENCH MARKS.



**SITE PLAN - TOILET & SHOWER BLDG. 'A'**  
SCALE: 1" = 20'

NOTE 1: LOCATION INFORMATION BASED ON PLAN POSITION.

NOTE 2: ALL ROADS & PARKING AREAS WILL BE CONSTRUCTED UNDER ANOTHER CONTRACT.



**SKYLIGHT FRAME DETAILS**  
NO SCALE

SURVEYED BY	DRAWN BY	NO.	DATE	BY	REVISIONS	NO.	DATE	BY	REVISIONS
	DDP	1.				3.			
		2.				4.			

MICHIGAN DEPARTMENT OF CONSERVATION

HOFFMASTER STATE PARK  
TOILET & SHOWER BLDG. A

SHEET NO. 3 OF 3  
FOR PROJECT NO. PA:108-5124-300-024-C1

COVER SHEET  
SHEET 1 OF 3 PLAN NO. A-101-A

BY: \_\_\_\_\_ DATE: \_\_\_\_\_

RECOMMENDED FOR APPROVAL: *V. Gardner* 1-29-69  
ENGINEER OR ARCHITECT DATE

RECOMMENDED FOR APPROVAL: *E. J. Pett* 1-20-69  
IN CHARGE OF DESIGN DATE

SECTION APPROVAL  
BY: *Robert O. Dodge* 1-30-69  
SECTION CHIEF DATE

ENGINEERING SECTION  
APPROVED: *H. E. Madson* 1-31-69  
CHIEF ENGINEER DATE

