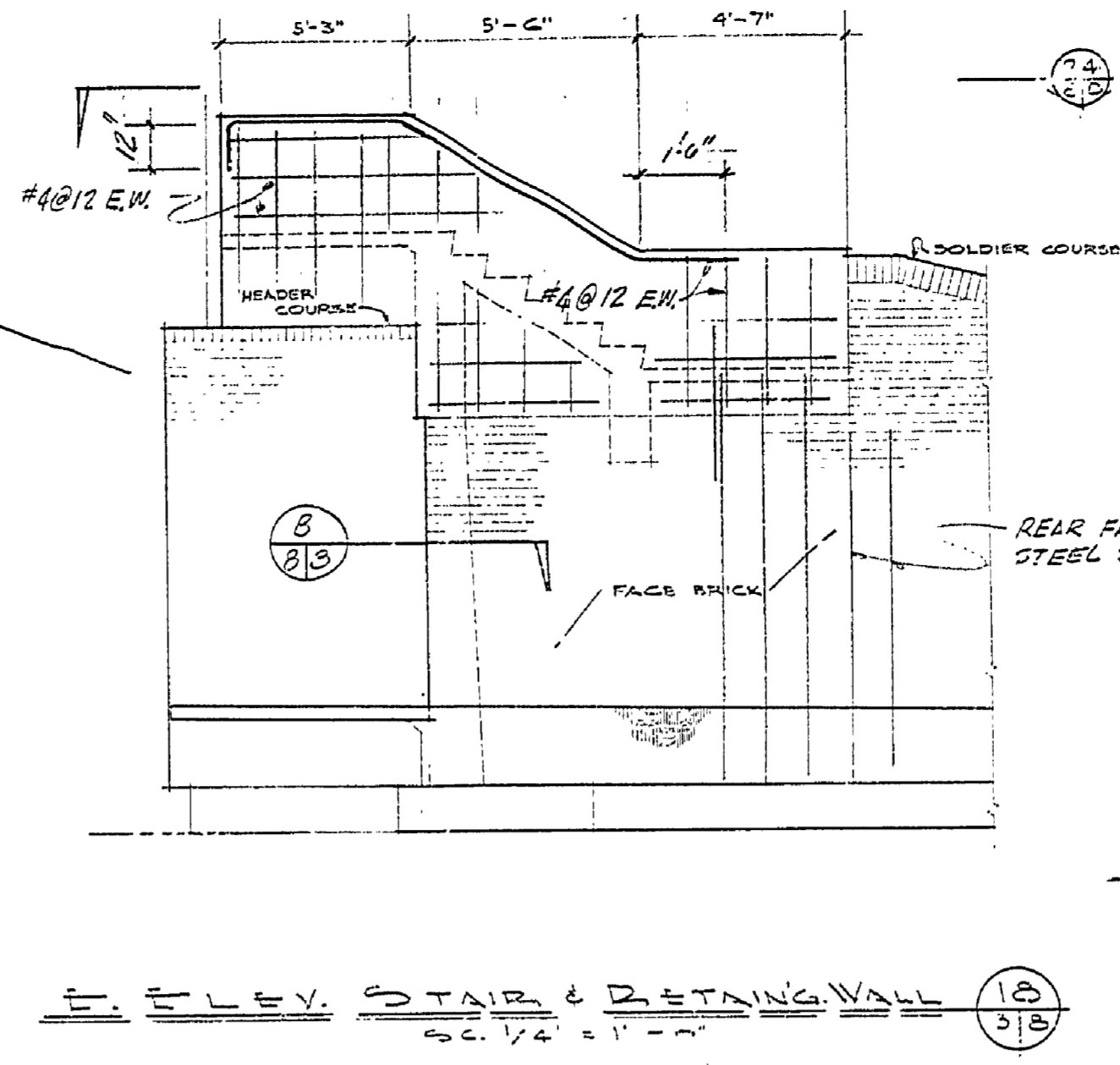
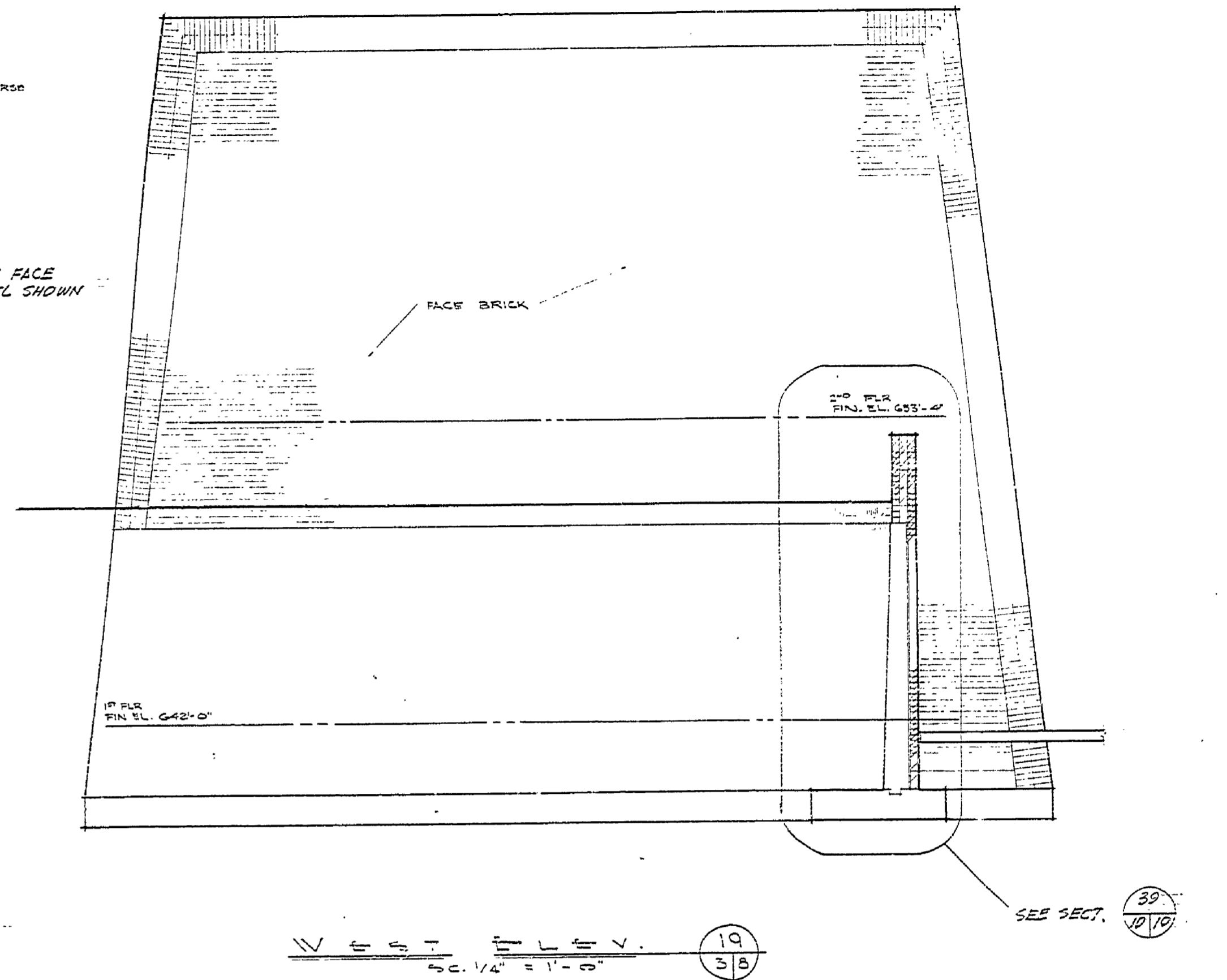


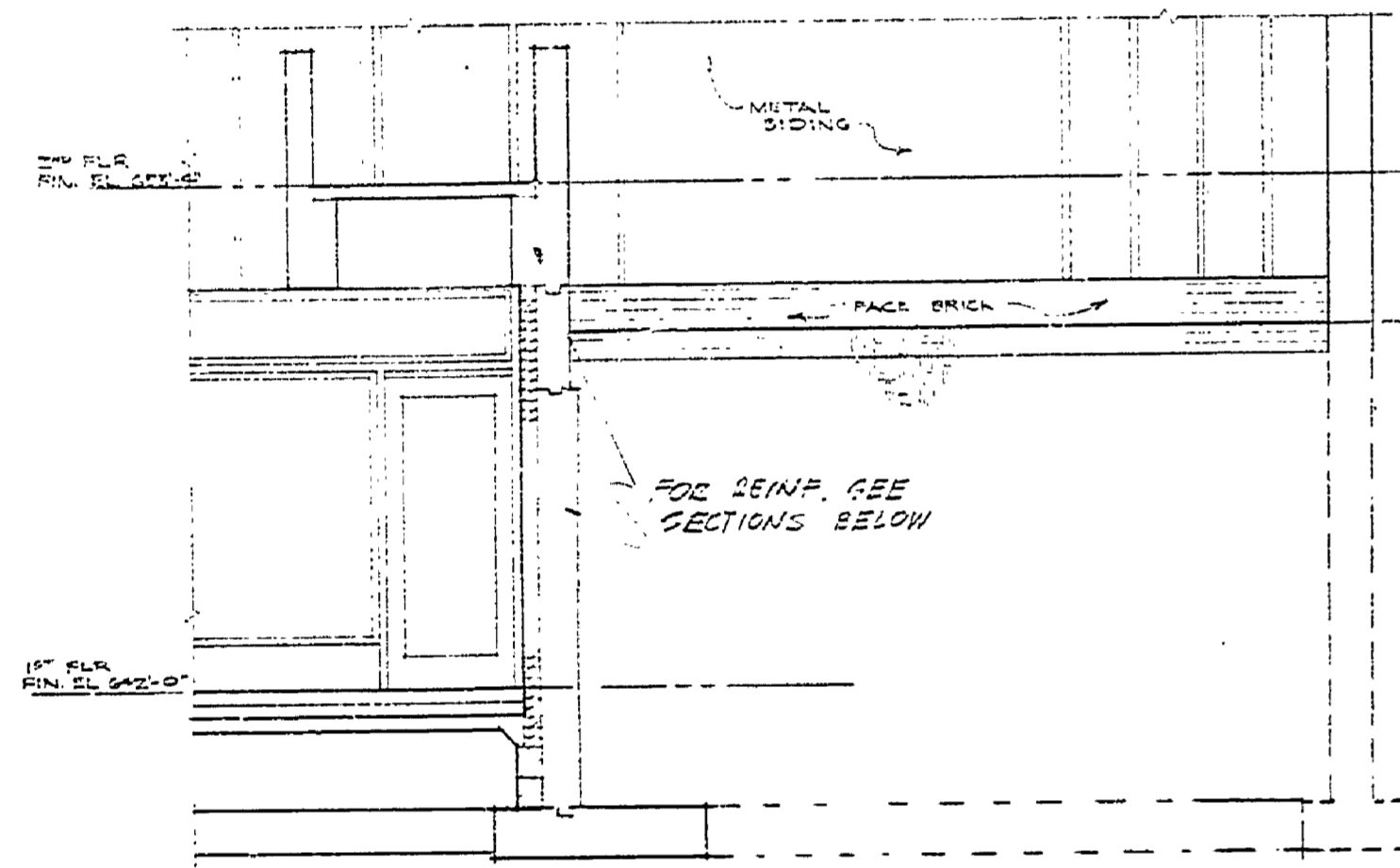
SOUTH ELEV. - EAST WING 17/31B



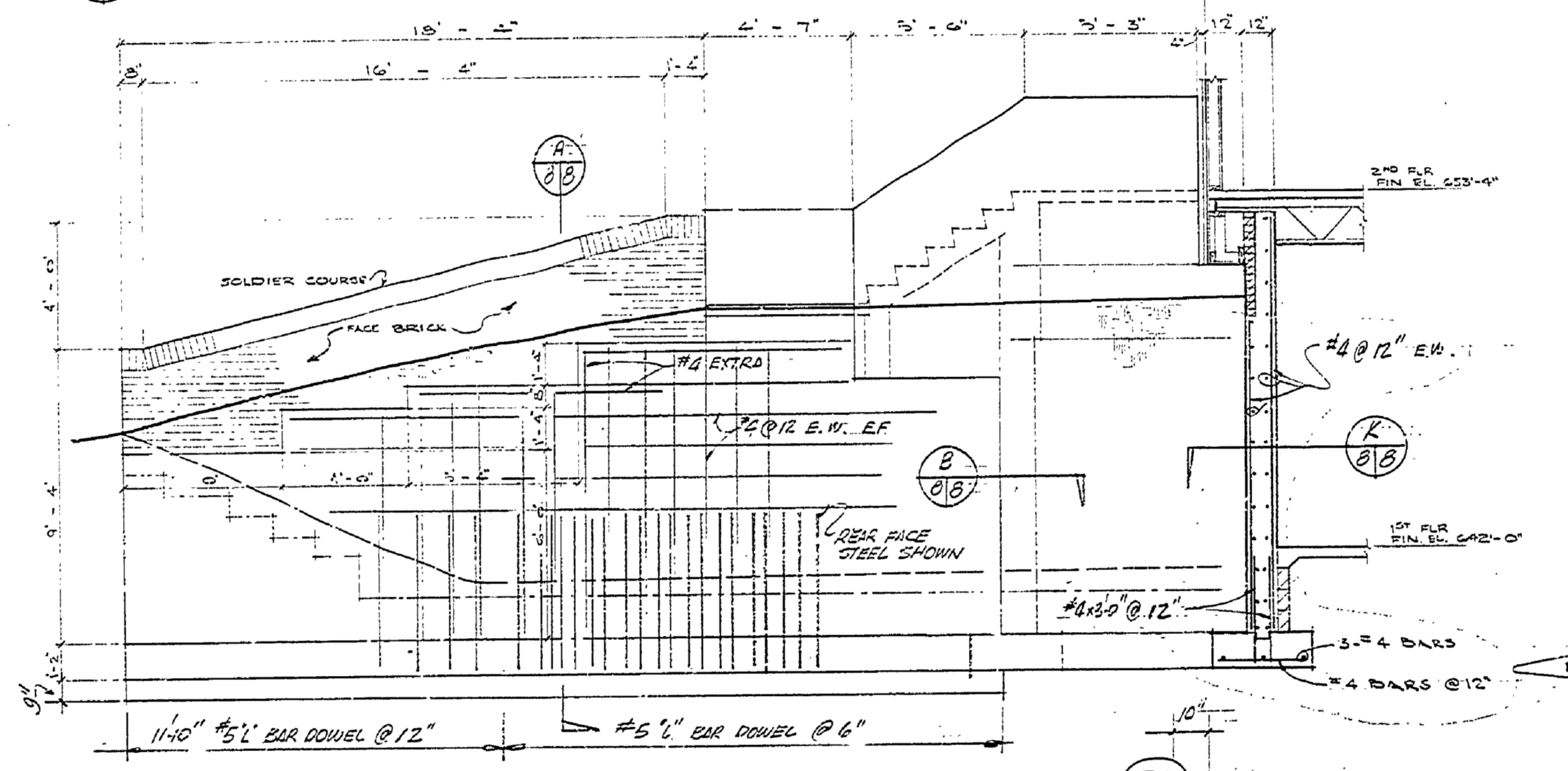
E. ELEV. STAIR & RETAINING WALL 18/31B



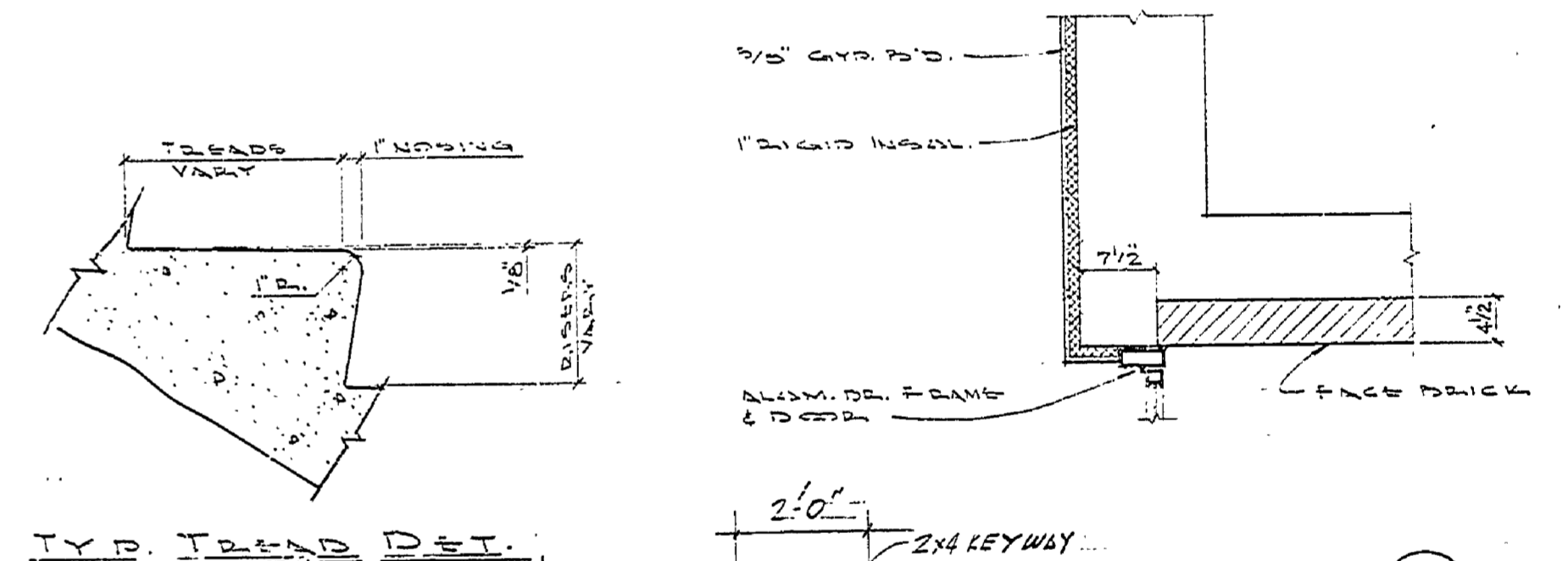
WEST ELEV. - WEST WING 19/31B



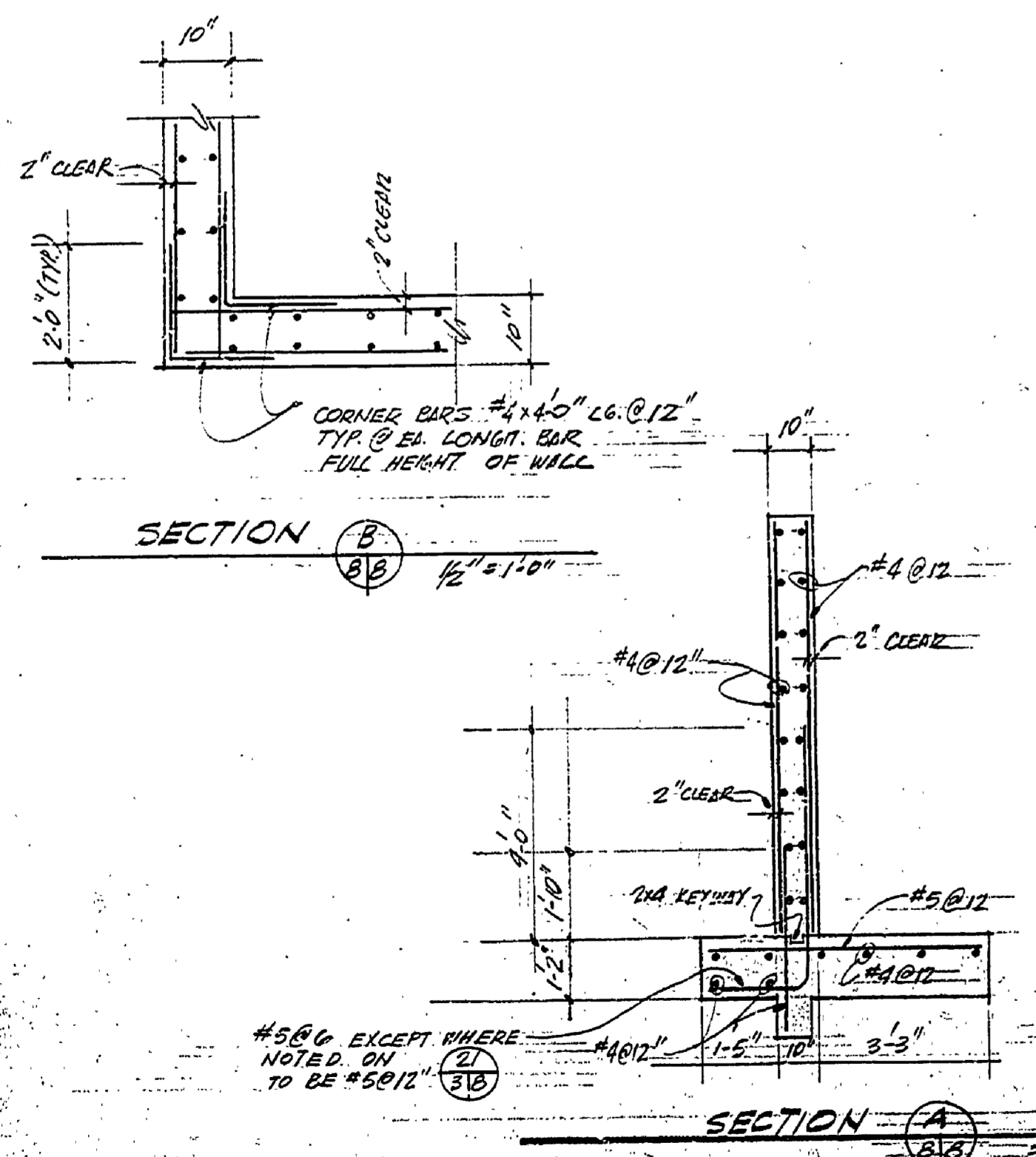
N. ELEV. - WEST WING AT STAIRS 20/31B



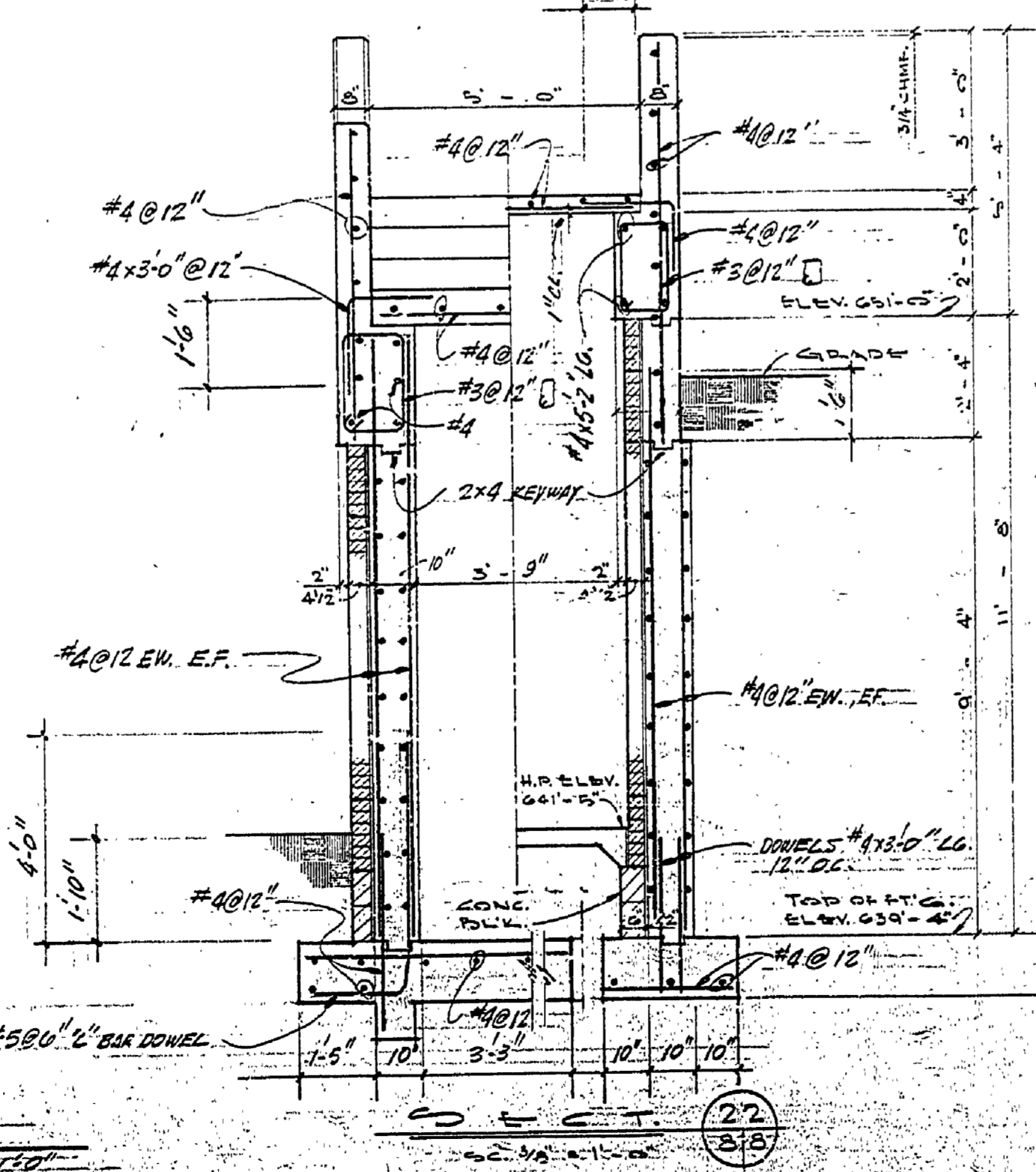
W. ELEV. STAIR & RETAINING WALL 21/31B



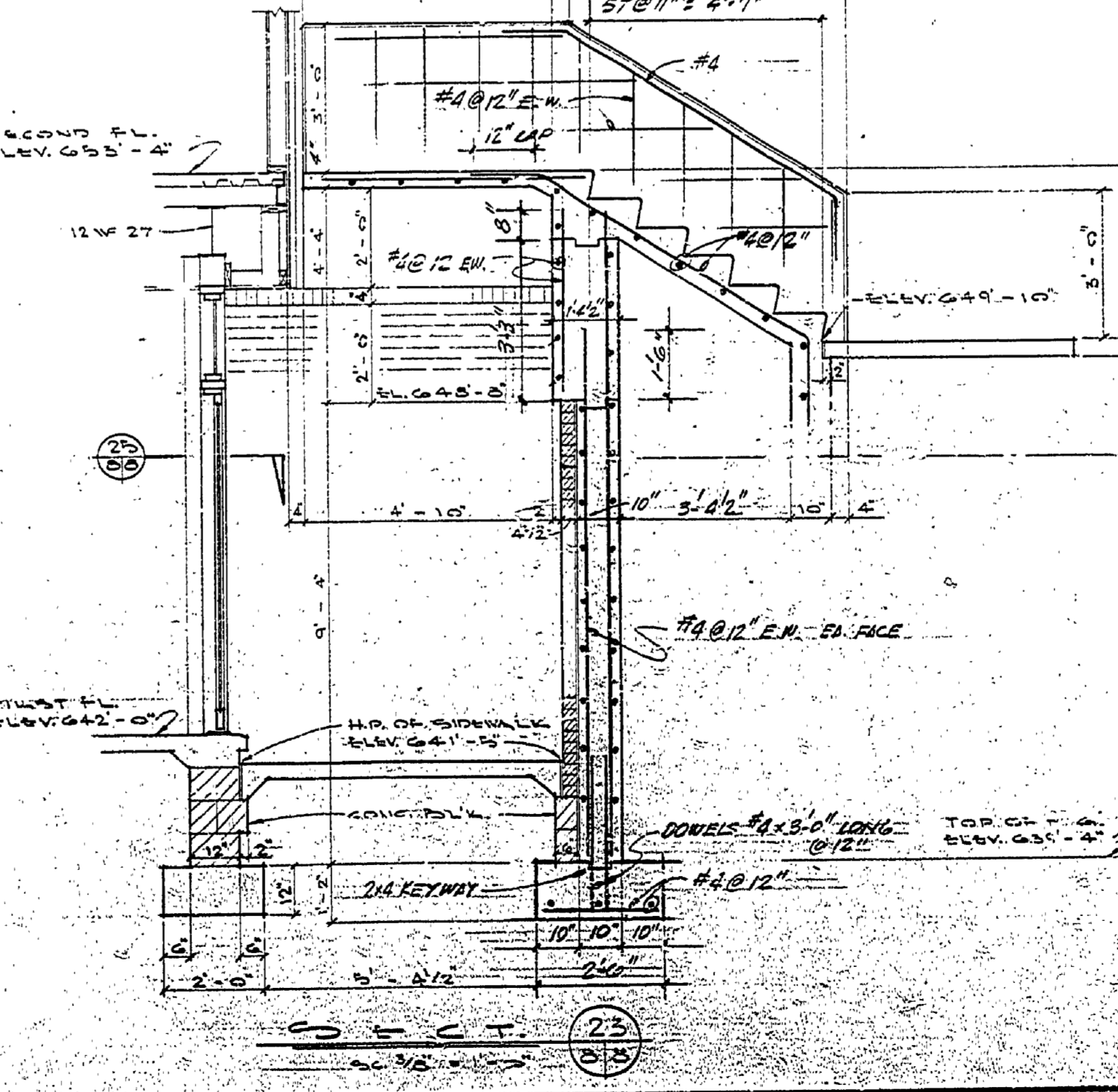
TYP. TREAD DET. DETAIL 25/31B



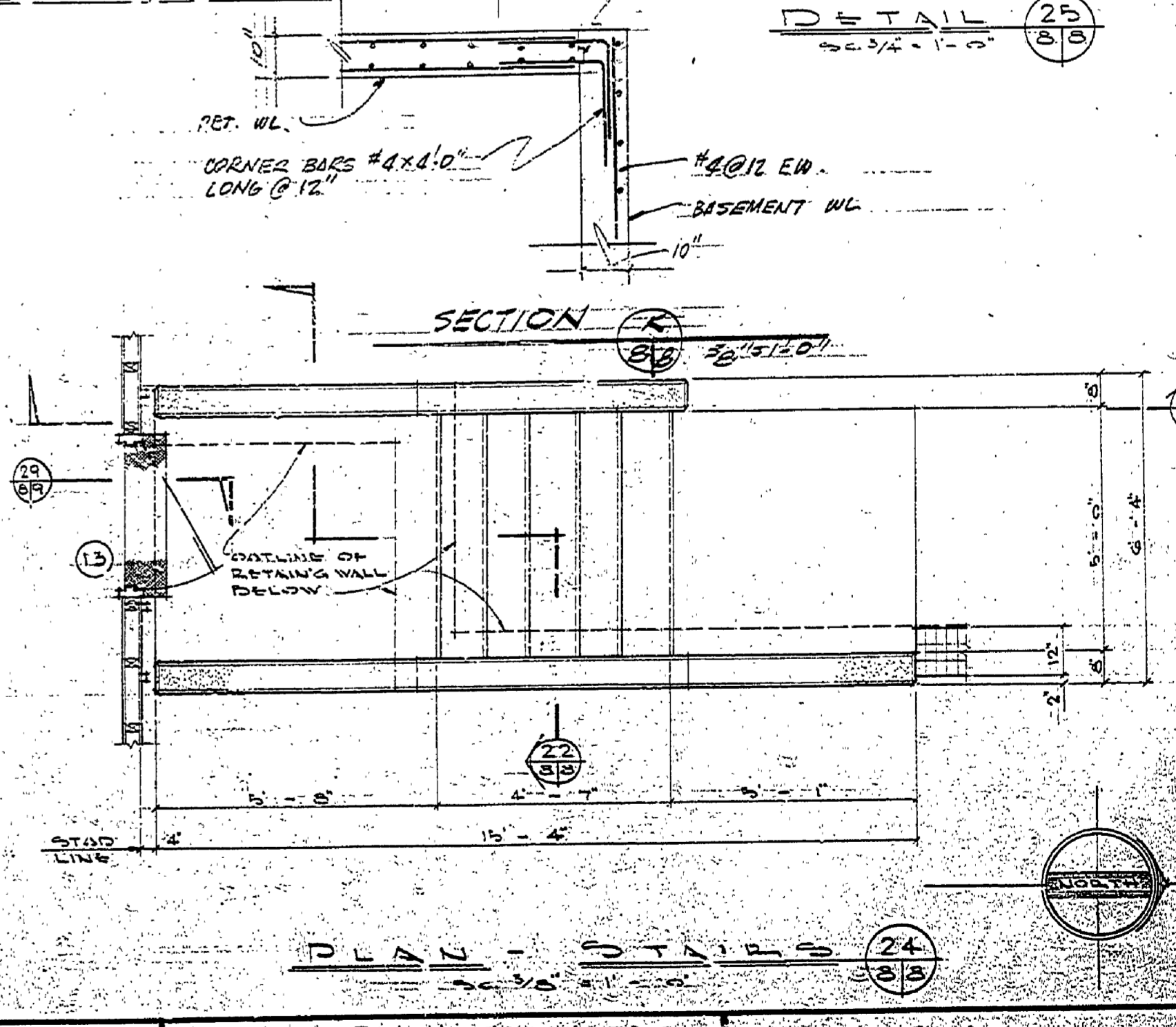
SECTION B 21/31B



SECTION A 22/31B



SECT. 23 23/31B



PLAN - STAIRS 24/31B

SURVEYED BY		DRAWN BY		NO. DATE BY REVISIONS		NO. DATE BY REVISIONS		MICHIGAN DEPARTMENT OF NATURAL RESOURCES		ELEVATIONS SECTIONS STAIR & DETAILS SHEET TITLE		D.J. HOFMANN STATE PARK		PROJECT NO. 261000	
DESIGNED BY	DATE	CHECKED BY	DATE	1	5/16/78	2		3		AREA OR PARK	PROJECT	SHEET 5 OF 21	PLAN NO. A-10B		
1100		1100								NATURE CENTER					