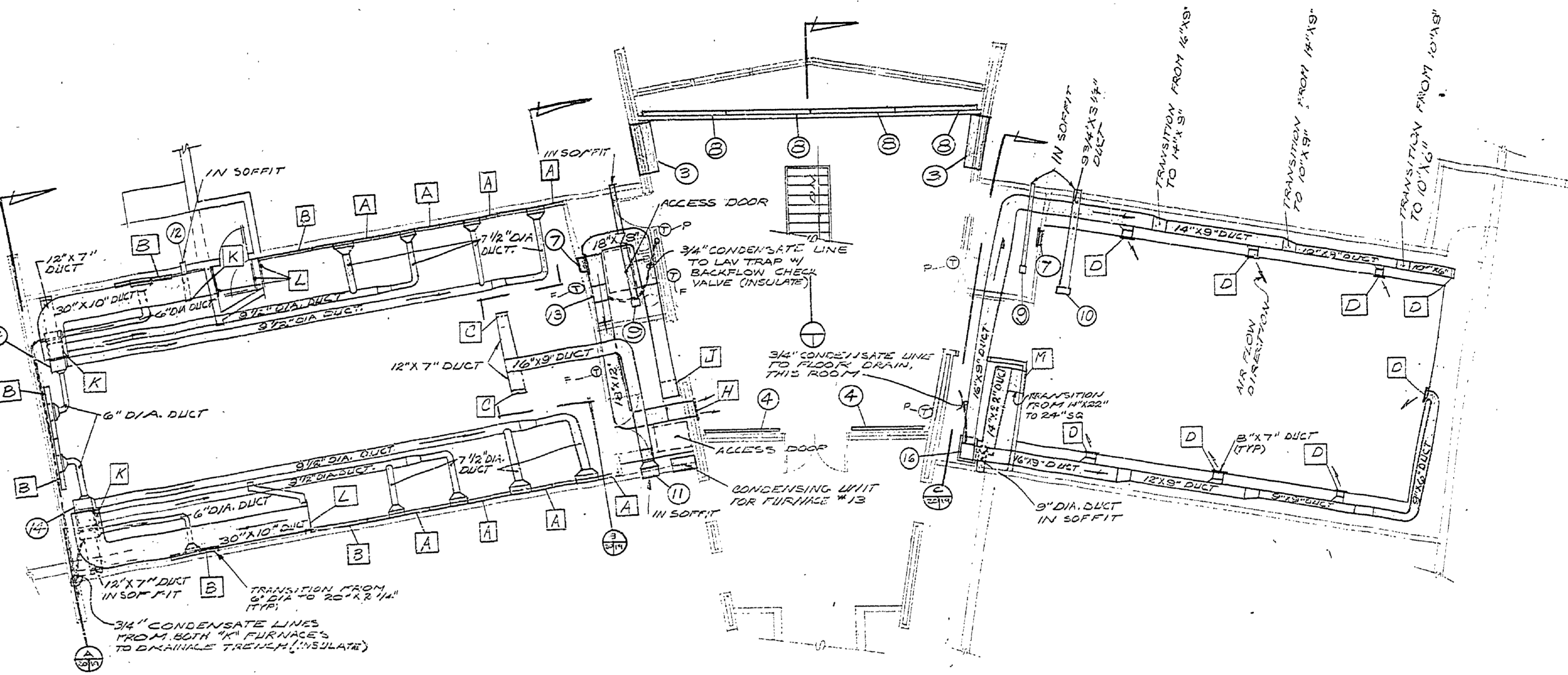
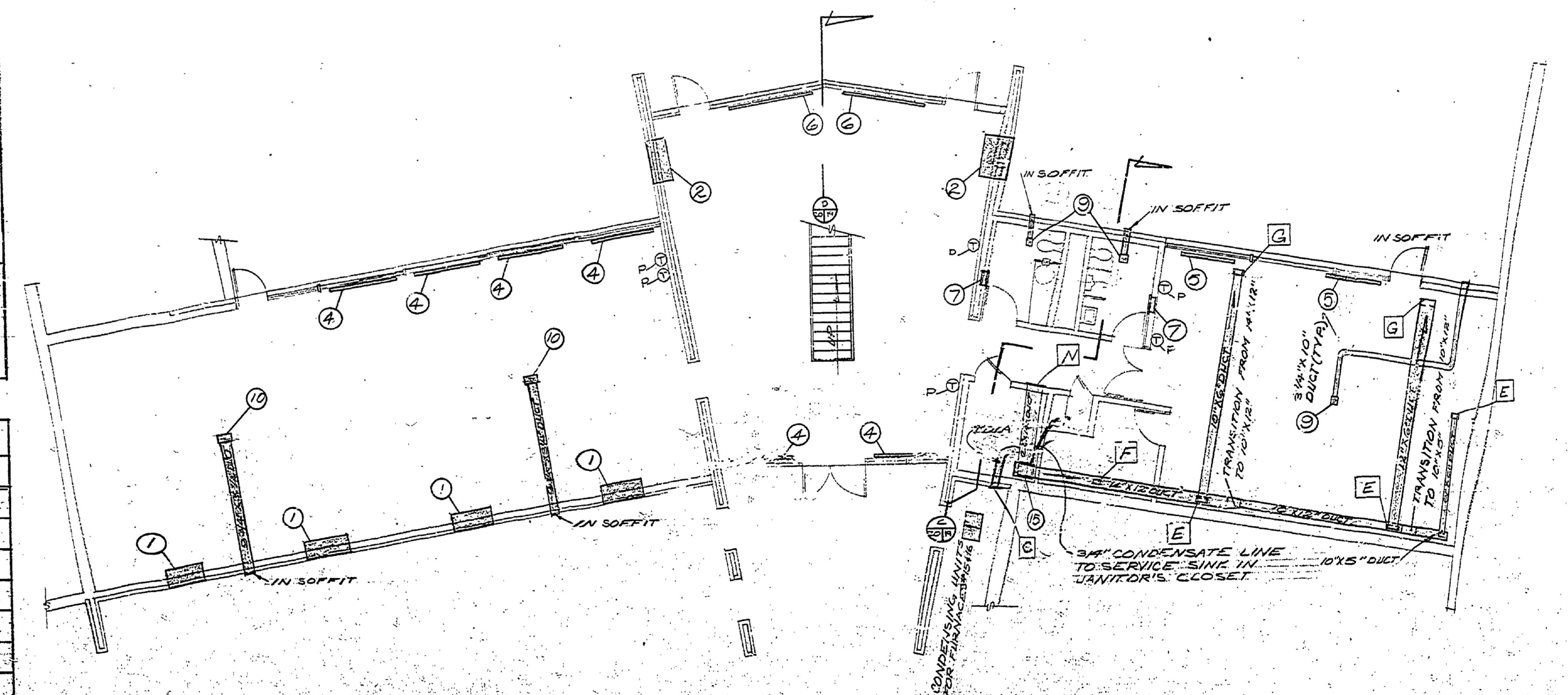


HEATING AND COOLING SCHEDULE						
MARK	QTD	VOLT	(HEAT) BTU (COOL) BTU	MANUFACTURER AND NUMBER	WHERE LOCATED	
1	4	208	5,242	13,500	ELECTRI-MATIC #EM-135A-3	CLASSROOM
2	2	208	7,060	13,500	ELECTRI-MATIC #EM-135A-5	FOYER
3	2	208	17,060	11,500	ELECTRI-MATIC #EM-115A-5	LOBBY
4	8	208	8,533	N/A	CHROMALOX #PDH-625R	(A) CLASSROOM, (2) FOYER, (2) LOBBY
5	2	208	6,526	N/A	CHROMALOX #PDH-520R	WORKROOM
6	2	208	11,964	N/A	CHROMALOX #PDH-835R	LOBBY
7	4	208	5,113	N/A	CHROMALOX #RSF-415	TOILETS (RECESSED)
8	4	208	9,520	N/A	CHROMALOX #SDM-625R	EDGE OF BALCONY
9	5	115	N/A	N/A	THERMADORE #VGT-90 W/ MOD. 30 SPEED CONTROL	(4) TOILETS, (1) WORKROOM
10	3	115	N/A	N/A	LOREN-COOK GEMINI #10-15 W/ FSC SPEED CONTROL	CLASSROOM & EXHIBIT ROOM
11	1	115	N/A	N/A	LOREN-COOK GEMINI #14-10N W/ FSC SPEED CONTROL	AUDIO VISUAL ROOM
12	1	208	N/A	N/A	LOREN-COOK GEMINI #12-15N W/ FSC SPEED CONTROL	PROJECTION ROOM
13	1	208	25,600	18,000	CHROMALOX: FURNACE #WAF-10-31/2 75 KW, 1 PHASE, 1/3 HP, 1360 CFM @ .50 SP (PROVIDE FILTERS). COIL #DX-1/2 CONDENSING UNIT #CC-AD-1/2 1 1/2 TONS	FOYER FURNACE HORIZONTAL ABOVE CEILING OF MEN'S TOILET
14	2	208	38,300	30,000	LENNOX: DOWN FLOW FURNACE #ES-2-511, 11.3 KW, 1 PHASE, 1/3 HP, 1100 CFM @ .50 SP (PROVIDE FILTERS). COIL #CR-41FF, CONDENSING UNIT #HSB-311FF, 2 1/2 TONS, 4.6 KW.	PROJECTION ROOM #13
15	1	208	28,300	26,000	LENNOX: FURNACE #E10QR-371 8.3 KW, 1 PHASE, 1/4 HP, 980 CFM @ .50 SP (PROVIDE FILTERS). COIL #C4-41FF, CONDENSING UNIT #HSB-261FF, 2 TONS, 4.6 KW.	MECHANICS ROOM #6
16	1	208	42,300	36,000	LENNOX: FURNACE #E10Q3-561, 12.4 KW, 1 PHASE, 1/3 HP, 1255 CFM @ .50 SP (PROVIDE FILTERS). COIL #C4-41FF, CONDENSING UNIT #HSB-411FF, 3 TONS, 4.6 KW.	MECHANICAL EQUIPMENT ROOM #17

DIFFUSER AND GRILLE SCHEDULE			
MARK	AMT	MANUFACTURER & NUMBER	LOCATION AND REMARKS
A	8	TITUS #PL110-6	AUDIO VISUAL ROOM
B	16	TITUS #PL110-5	AUDIO VISUAL ROOM
C	3	HART & COOLEY #650V, 8"X12"	AUDIO VISUAL ROOM, BELOW ROOF TRUSS
D	8	HART & COOLEY #92HV, 8"X6"	EXHIBIT ROOM
E	3	HART & COOLEY #92VHY, 10"X4"	E'DEFLECTION, OFFICE & WORK ROOM
F	7	HART & COOLEY #92VH, 8"X4"	E'DEFLECTION, OFFICE & WORK ROOM
G	2	HART & COOLEY #92VHY, 12"X6"	E'DEFLECTION, OFFICE & WORK ROOM
H	1	HART & COOLEY #92VHY, 16"X12"	FOYER, UPPER WALL
J	1	HART & COOLEY #650H, 18"X18"	ENTRY TO AUDIO VISUAL ROOM
K	3	HART & COOLEY #650H, 12"X10"	FURNACE PLENUM EXHAUST DUCT, PROJECTION ROOM
L	4	HART & COOLEY #650H, 30"X10"	OVER DOORS TO PROJECTION ROOM
M	1	HART & COOLEY #650H, 24"X24"	WALL IN JANITORS CLOSET
N	1	HART & COOLEY #650H, 24"X12"	WALL ACROSS FROM MECHANICS WORKROOM



SECOND FLOOR MECHANICAL PLAN
18'-0"



FIRST FLOOR MECHANICAL PLAN
18'-0"

①-E-- THERMOSTAT FOR HTG & CLG. (FURNACES)
①-P-- THERMOSTAT FOR HTG ONLY (ELECTRIC PANELS)
NOTE: COMBINATION HEATING AND COOLING UNITS #12-15 TO BE EQUIPPED WITH INTEGRAL THERMOSTATS

DESIGNED BY T.P.		DRAWN BY S.S.		NO. DATE BY		REVISIONS		NO. DATE BY		REVISIONS		MICHIGAN DEPARTMENT OF NATURAL RESOURCES		MECHANICAL HEATING & AIR CONDITIONING		P.J. HOFFMASTER AREA OR PARK STATE BUREAU		PROJECT NO. 14-1660	
CHECKED BY T.P.		DATE 12/12/72		NO. DATE BY		REVISIONS		NO. DATE BY		REVISIONS		SHEET 20 OF 21		PLAN NO. A-108		PROJECT NATURE CENTER			