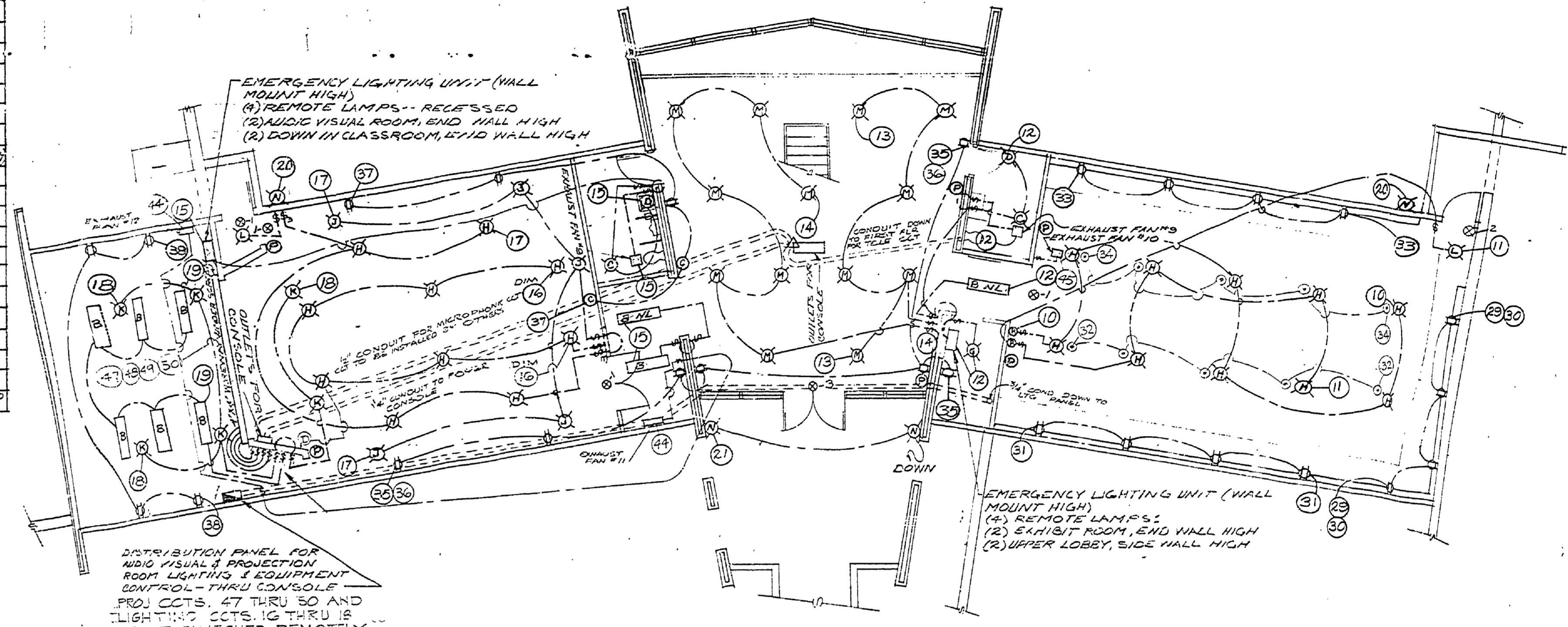


### FIXTURE SCHEDULE

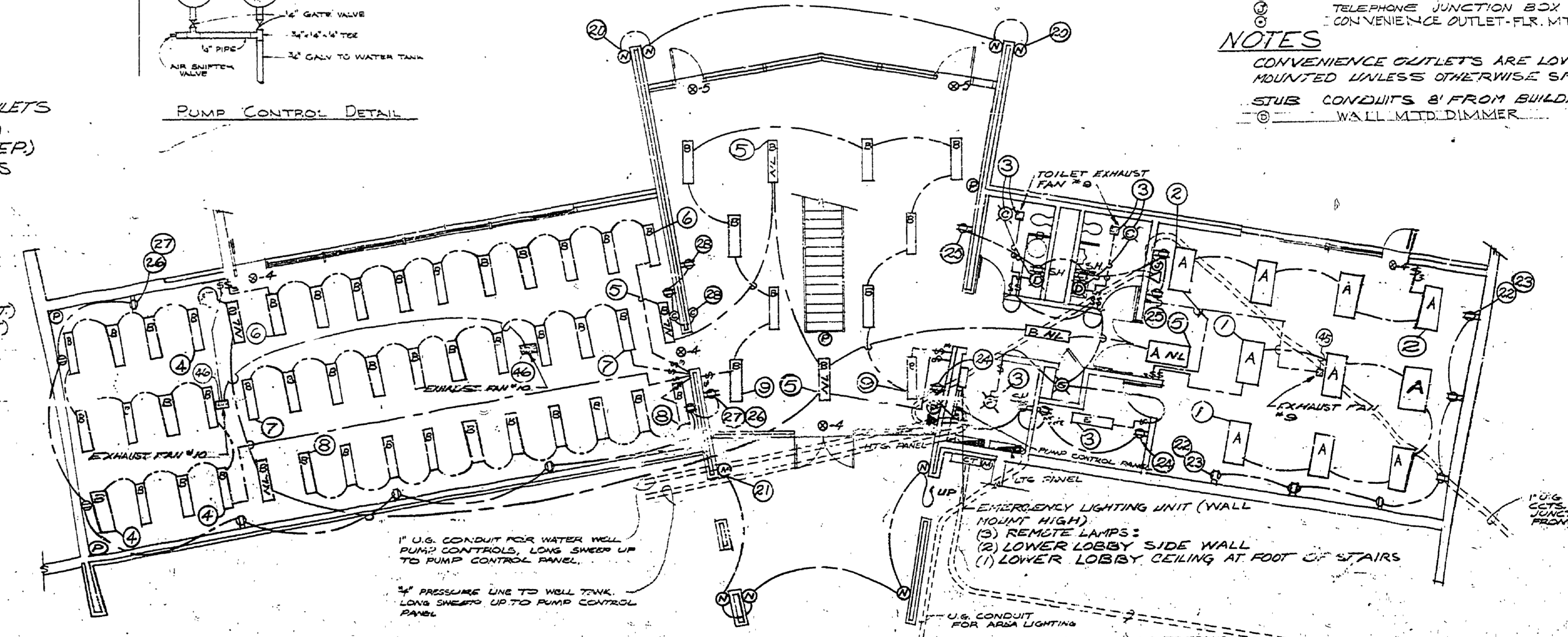
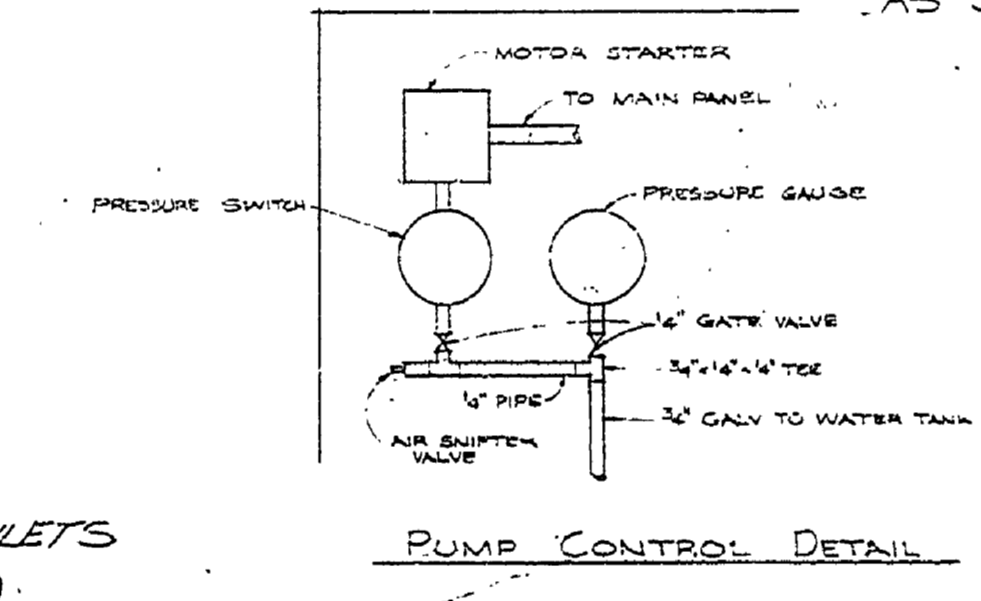
NO.	AMT.	MANUFACTURER & NUMBER	LAMP	WATT	REMARKS
A	11	SOLUX FF24PF-441	FLUOR 4(40W)		MOUNT IN WORKROOM CEILING
B	66	SOLUX FF4PF-241	FLUOR 2(40W)		MOUNT IN CEILING
C	4	SOLUX H3108	INCAND 2(60W)		SURFACE MOUNT ON TOILET CEILING
D	4	SOLUX AKV64	INCAND 2(60W)		MOUNT HORIZ. ABOVE TOILET MIRRORS
E	1	SOLUX F102-2-241	FLUOR 2(40W)		MOUNT AT BOTTOM OF TRUSSES
F	1	STD. PORCELAIN FIXTURE	INCAND 1(100W)		MOUNT AT BOTTOM OF TRUSSES
G	2	STD. PULL-CHAIN FIXTURE	INCAND 1(75W)		MOUNT AT BOTTOM OF TRUSSES
H	20	MARKSTONE WAI-F41-L45	INCAND 1(25W)		MOUNT RECESSED IN CEILING
J	5	MARKSTONE WAI-618	INCAND 1(75W)		MOUNT RECESSED IN CEILING (AUDIO VISUAL ROOM)
K	4	MARKSTONE W5504	INCAND 1(25W)		MOUNT RECESSED
L	2	MARKSTONE WAI-F30-L35	INCAND 1(75W)		MOUNT RECESSED TO OVER EXIT AREA
M	13	MARKSTONE W5930	INCAND 1(25W)		RECESSED ADJ. BEAM TO VERTICAL
N	13	M.PHILBEN 6N-26E	INCAND 1(25W)		MOUNT 8' HIGH AS EXTERIOR NIGHT LIGHTS
P	11	EVIDE REMOTE FIXTURE	INCAND 1(25W)		MOUNT RECESSED
S	2	M.PHILBEN 33-25A	INCAND 1(60W)		MOUNT TOP OF FIXTURE 3 COURSES ABOVE RAMP, STEPS & WERKING WALK ELEVATOR
T	3	STONCO B6800-E	INCAND 1(25W)		MOUNT ON BRIDGE BEAMS (SEE SHT # 14)
X1	4	M.PHILBEN 4M-S4Y	INCAND 1(25W)		W/EXIT GLOW PANEL WALL MOUNT
X2	1	M.PHILBEN 40W-BK1-Y (ARROW)	INCAND 1(25W)		W/EXIT GLOW PANEL WALL MOUNT
X3	1	M.PHILBEN 400-SK1-Y-P-45-30	INCAND 1(25W)		W/EXIT GLOW PANEL 45° W/EXIT JUNCTION
X4	4	M.PHILBEN 400-BK1-Y	INCAND 1(25W)		W/EXIT GLOW PANEL 45° W/EXIT JUNCTION
X5	2	M.PHILBEN 400-BK1-Y	INCAND 1(25W)		W/EXIT GLOW PANEL 45° W/EXIT JUNCTION

### CIRCUIT DATA

1	120V	LIGHTING, WORK ROOM
2	120V	LIGHTING, WORK ROOM
3	120V	LIGHTING, FIRST FLOOR FURNACE ROOM & MENS & WOMENS TOILETS
4	120V	LIGHTING, CLASSROOM
5	120V	LIGHTING, FIRST FLOOR NIGHT LIGHTS & EMERG. LTG
6	120V	LIGHTING, CLASSROOM
7	120V	LIGHTING, CLASSROOM
8	120V	LIGHTING, CLASSROOM
9	120V	LIGHTING, LOBBY
10	120V	LIGHTING, EXHIBIT ROOM
11	120V	LIGHTING, EXHIBIT ROOM
12	120V	LIGHTING, SECOND FLOOR NIGHT LIGHT, WOMENS TOILET & EMERG. LTG.
13	120V	LIGHTING, FOYER
14	120V	LIGHTING, FOYER
15	120V	LIGHTING, SECOND FLOOR MENS TOILET & EMERG. LTG.
16	120V	LIGHTING, AUDIO VISUAL ROOM
17	120V	LIGHTING, AUDIO VISUAL ROOM
18	120V	LIGHTING, AUDIO VISUAL ROOM & PROJECTION ROOM
19	120V	LIGHTING, PROJECTION ROOM
20	120V	LIGHTING, EXTERIOR NIGHT LIGHTS
21	120V	LIGHTING, EXTERIOR ENTRANCE
22	120V	CONVENIENCE OUTLETS, WORK ROOM (TOP RECEPT)
23	120V	CONVENIENCE OUTLETS, WORK ROOM (BOTTOM RECEPT)
24	120V	CONVENIENCE OUTLETS, FIRST FLOOR FURNACE & SUPPLY ROOMS
25	120V	CONVENIENCE OUTLETS, FIRST FLOOR WORK ROOM & MENS & WOMENS TOILETS
26	120V	CONVENIENCE OUTLETS, AUDIO VISUAL & PROJECTION ROOMS (TOP RECEPT)
27	120V	CONVENIENCE OUTLETS, AUDIO VISUAL & PROJECTION ROOMS (BOTTOM RECEPT)
28	120V	CONVENIENCE OUTLETS, CLASSROOM & LOBBY ALSO TWO CLOCK OUTLETS
29	120V	CONVENIENCE OUTLETS, EXHIBIT ROOM (TOP RECEPT)
30	120V	CONVENIENCE OUTLETS, EXHIBIT ROOM (BOTTOM RECEPT)
31	120V	CONVENIENCE OUTLETS, EXHIBIT ROOM (TOP RECEPT)
32	120V	CONVENIENCE OUTLETS, EXHIBIT ROOM (BOTTOM RECEPT)
33	120V	CONVENIENCE OUTLETS, EXHIBIT ROOM (TOP RECEPT)
34	120V	CONVENIENCE OUTLETS, EXHIBIT ROOM (BOTTOM RECEPT)
35	120V	CONVENIENCE OUTLETS, AUDIO VISUAL, FOYER & FURNACE ROOMS (TOP RECEPT)
36	120V	CONVENIENCE OUTLETS, AUDIO VISUAL, FOYER & FURNACE ROOMS (BOTTOM RECEPT)
37	120V	CONVENIENCE OUTLETS, AUDIO VISUAL, ALSO TWO CLOCK OUTLETS
38	120V	CONVENIENCE OUTLETS, PROJECTION ROOM
39	120V	LIGHTING, EXTERIOR APPROACH WALK (SEE SHT #2 FOR LOCATION)
40	120V	LIGHTING, EXTERIOR APPROACH WALK (SEE SHT #2 FOR LOCATION)
41	120V	LIGHTING, EXTERIOR APPROACH WALK (SEE SHT #2 FOR LOCATION)
42	120V	LIGHTING, EXTERIOR APPROACH WALK (SEE SHT #2 & #16 FOR LOCATION)
43	120V	LIGHTING, BUILDING EXIT LIGHTS
44	120V	EXHAUST FANS - PROJECTION RM & ENTRY
45	120V	EXHAUST FANS - EXHIBIT AND WORKROOM
46	120V	EXHAUST FANS - CLASSROOM
47	120V	CONVENIENCE OUTLET (WIREWAY), PROJECTION ROOM
48	120V	" " " " " "
49	120V	" " " " " "
50	120V	" " " " " "



SECOND FLOOR ELECTRICAL PLAN  
1/8" = 1'-0"



FIRST FLOOR ELECTRICAL PLAN  
1/8" = 1'-0"

### LEGEND

- ⊙ CLOCK OUTLET
- ⊕ CONVENIENCE OUTLET
- ⊖ EXIT LIGHT
- ⊗ PRIVATE TELEPHONE
- ⊘ PUBLIC TELEPHONE
- ⊙ ELECTRICAL PANEL
- ⊙ SWITCH HEIGHT
- ⊙ SWITCH
- ⊙ 3-WAY SWITCH
- ⊙ 4-WAY SWITCH
- ⊙ RHEOSTAT
- ⊙ EMERGENCY LTG. REMOTE LAMPS
- ⊙ TELEPHONE JUNCTION BOX
- ⊙ CONVENIENCE OUTLET - FLR. MTD.

### NOTES

- CONVENIENCE OUTLETS ARE LOW WALL MOUNTED UNLESS OTHERWISE SPECIFIED.
- STUB CONDUITS 8' FROM BUILDING
- WALL MTD. DIMMER

SURVEYED BY	DESIGNED BY T.P.	DRAWN BY S.B.	1-73	NO. 1	DATE 1/27/73	BY M.L.	REVISIONS	NO. 2	DATE 1-73	BY	REVISIONS	MICHIGAN DEPARTMENT OF NATURAL RESOURCES	MECHANICAL ELECTRICAL PLAN	R. L. HOFFMASTER	AREA OR PARK STATE PARK	PROJECT NO. 24-10245	
	DATE	CHECKED BY T.P.	DATE				LOW VOLTAGE IDENTIFY CONTROLS (ALSO FLOOR OUTLETS ADDED IN ENGR. RM.)						SHEET TITLE	PROJECT	NATURE - CENTER	SHEET 21 OF 21	PLAN NO. 11105