

DRAWN BY G. MILLER 2-29-68	TRACED BY	REVIEWED BY SECTIONS		DATE	APPROVED BY	NO.	DATE	BY	
		ARCHITECTURAL	ENGINEERING						LANDSCAPE
CHECKED BY	DATE	REVIEWED BY SECTIONS		DATE	APPROVED BY	NO.	DATE	BY	
		ARCHITECTURAL	ENGINEERING						LANDSCAPE
		ASSISTANT CHIEF IN CHARGE							
		OF DESIGN							
		DATE							
		REVISIONS							
		NO.		DATE		BY			
		1							
		2							
		3							
		4							
		5							
		6							

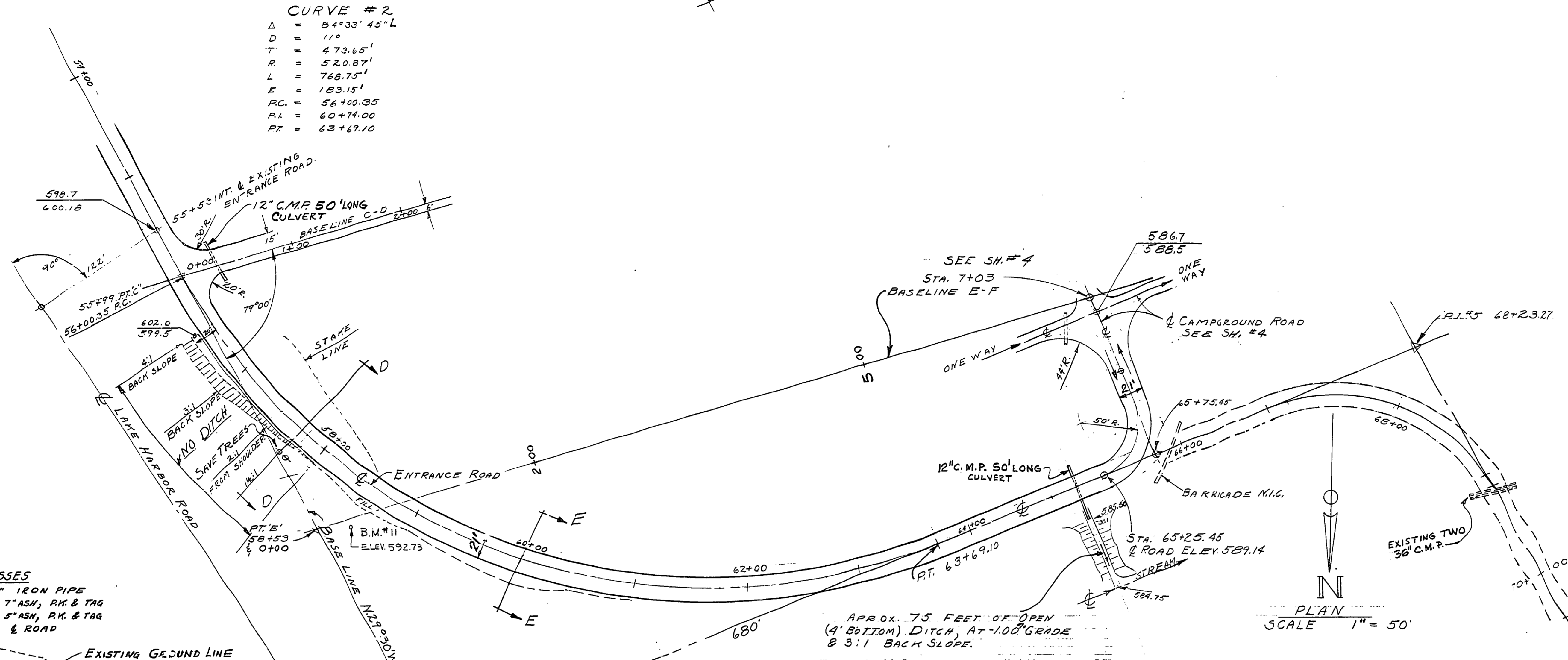
CURVE #2
 $\Delta = 84^{\circ}33'45''L$
 $D = 110'$
 $T = 473.65'$
 $R = 520.87'$
 $L = 768.75'$
 $E = 183.15'$
 $PC = 56+00.35$
 $PI = 60+74.00$
 $PT = 63+69.10$

NOTE: 598.7 EXISTING GROUND ELEV.
 600.18 PROPOSED GRADE TOP OF PAVEMENT ELEV.

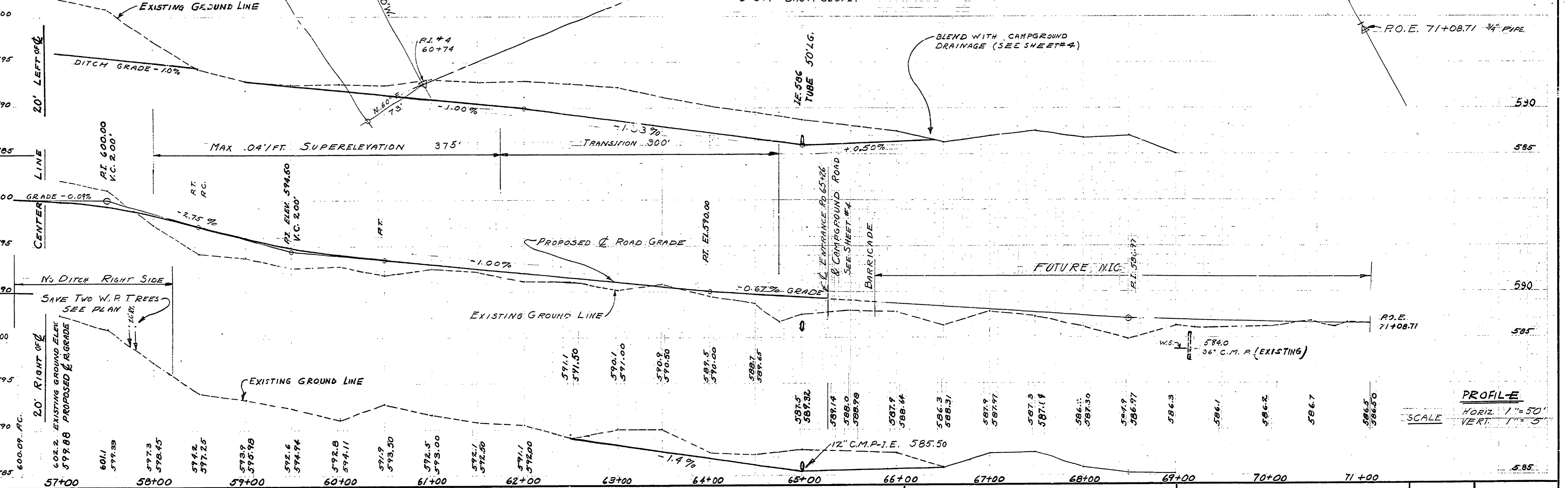
NOT IN CONTRACT
CURVE #3
 $\Delta = 84^{\circ}11'45''R$
 $D = 370'$
 $T = 139.91'$
 $R = 154.85'$
 $L = 227.56'$
 $PC = 66+83.36$
 $PI = 68+23.27$
 $PT = 69+10.92$

WITNESSES
 PT #4, 3/4" X 30" IRON PIPE
 N.20° W., 695', 7" ASH, PK & TAG
 N.33° E., 1177', 5" ASH, PK. & TAG
 N.60° E., 780' & ROAD

WITNESSES
 PI #5 3/4" IRON PIPE
 N72°30' W - 17.05' - 17" OAK, SPIKE & TAG
 N 60° E - 11.97' - 24" OAK, SPIKE & TAG



PLAN
 SCALE 1" = 50'



PROFILE
 HORIZ. 1" = 50'
 VERT. 1" = 5'

ENTRANCE ROAD PLAN & PROFILE

MICHIGAN
 DEPARTMENT OF CONSERVATION
 PARKS AND RECREATION DIVISION

P.J. HOFFMASTER
 STATE PARK

SHEET NO. 7 OF 27
 PLAN NO. E-101