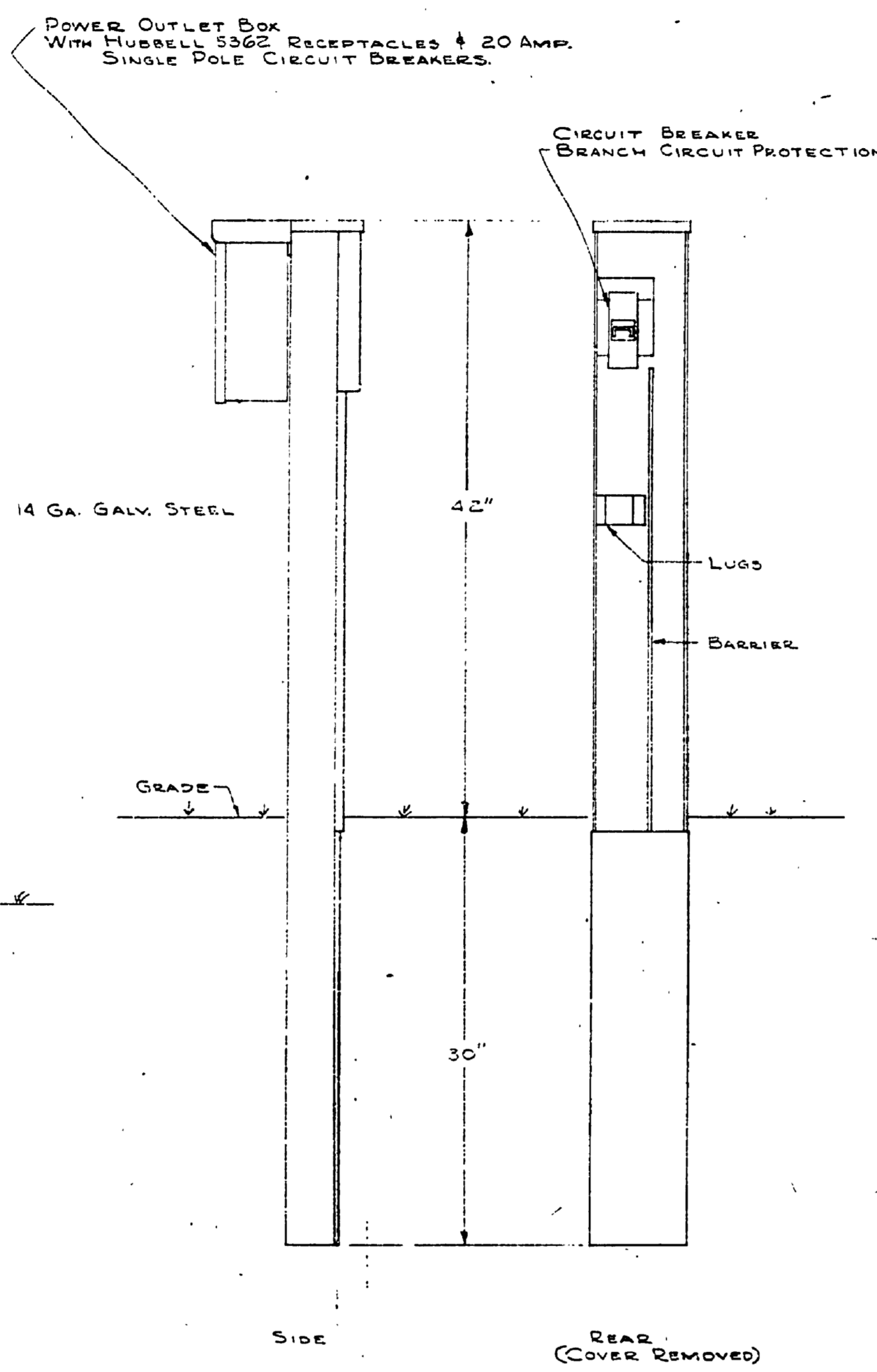


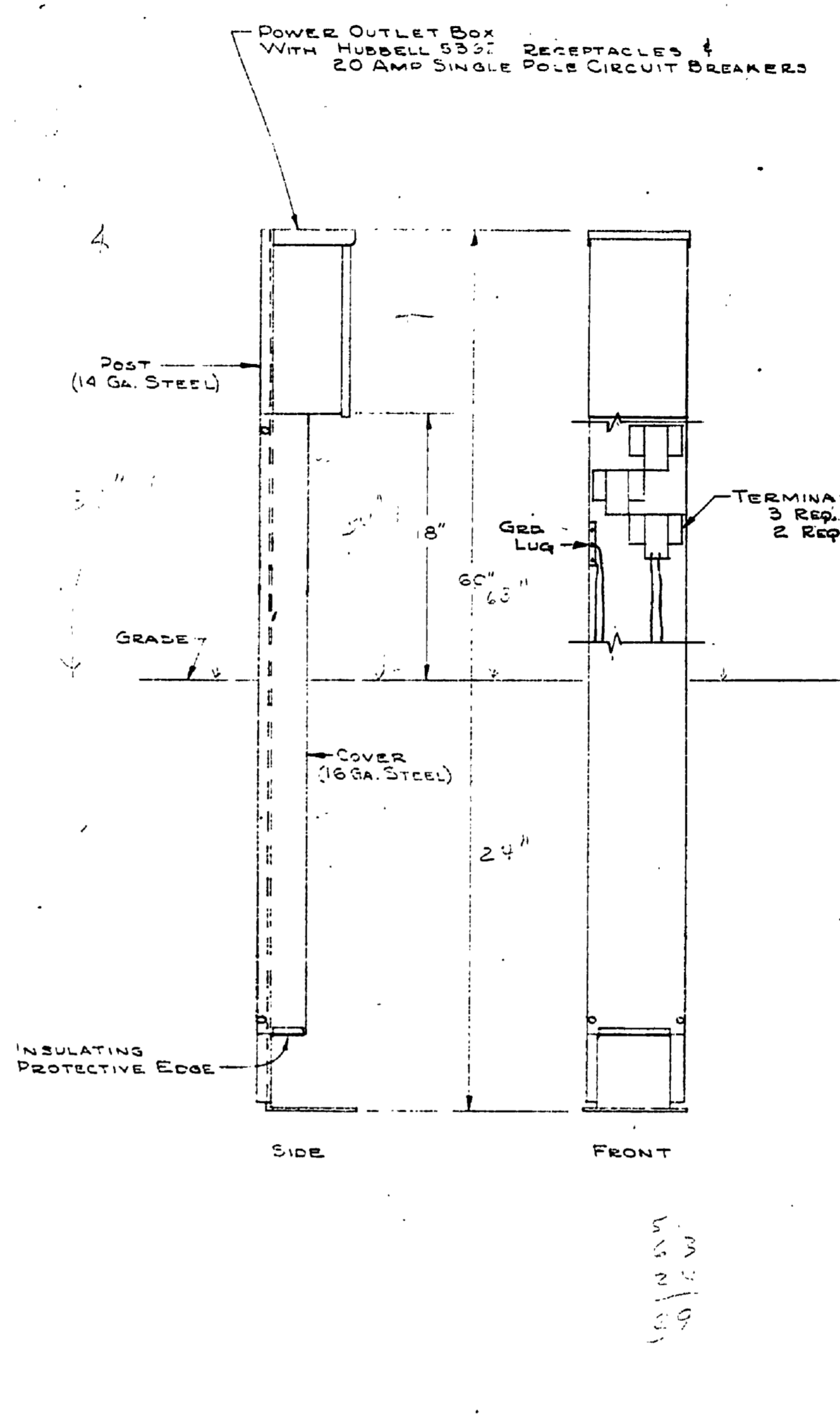
**ENTRANCE RACK**  
WITH METER SOCKET & CIRCUIT BREAKER PANEL BOARD

NOTE: GROUND ELECTRICAL SYSTEM AT DISTRIBUTION PANELBOARD TO NEAREST BURIED WATER PIPE

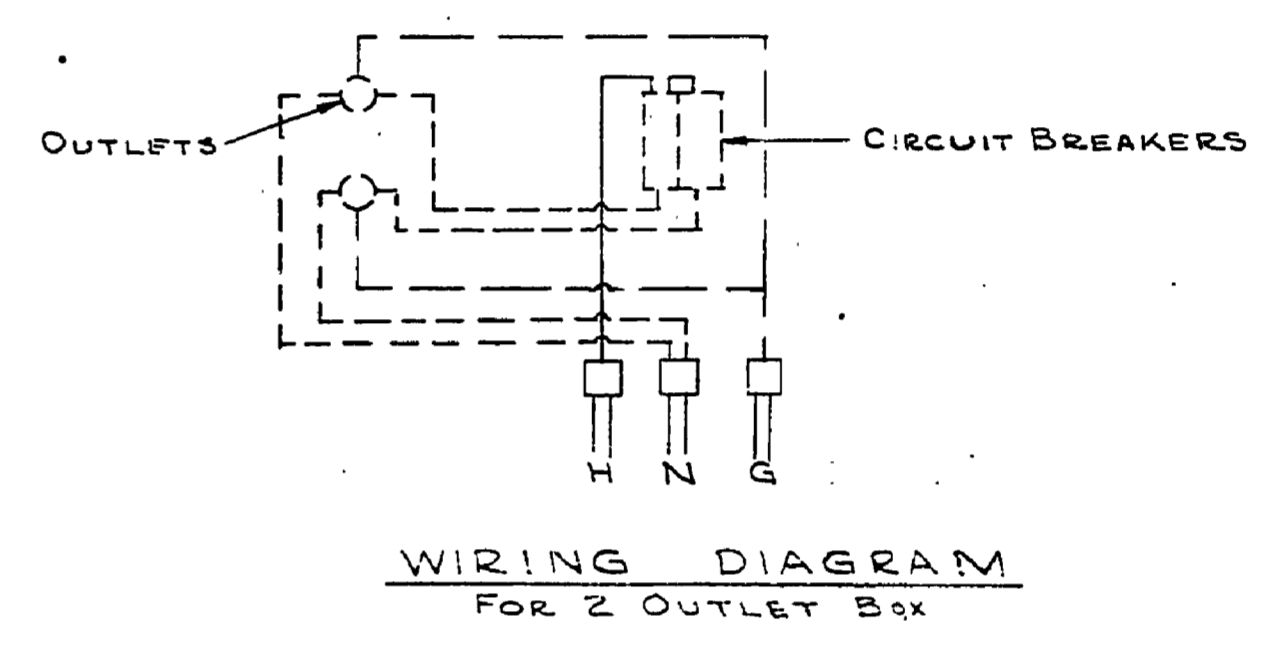
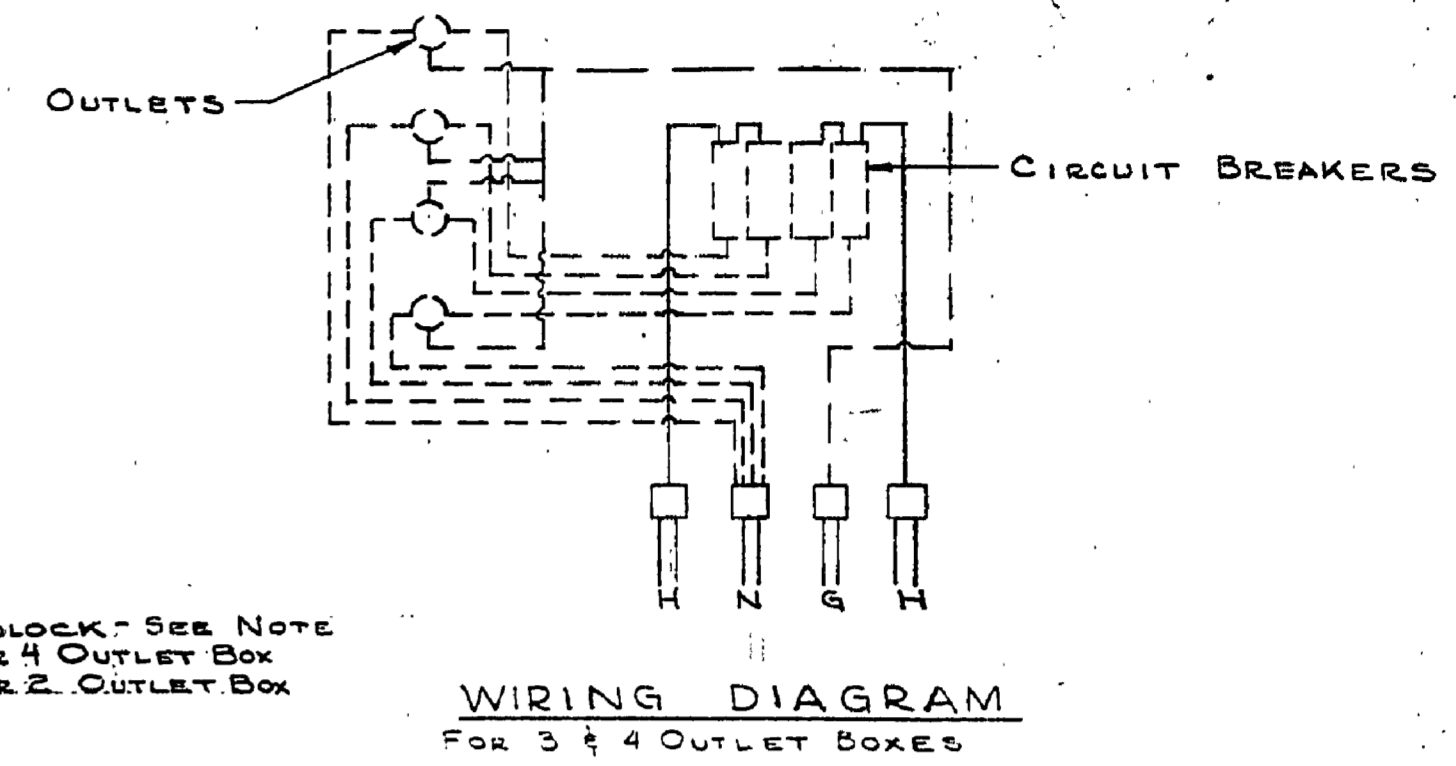


**JUNCTION POST**  
WITH OUTLET BOX & BRANCH CIRCUIT PROTECTION

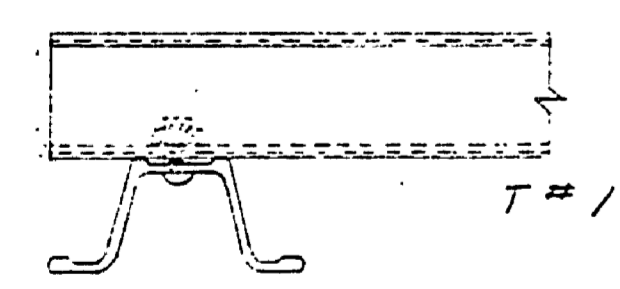
INSTALL CIRCUIT BREAKERS IN PANEL-BOARD FOR RESPECTIVE LINES DESIGNATED ON PLAN AS FOLLOWS:



**MOUNTING POST**  
WITH OUTLET BOX



NOTE: THESE POSTS ARE DESIGNED TO PERMIT LOOPING OF CABLE FROM ONE UNIT TO THE NEXT. SPlicing TO BE DONE IN POST. LUGS ARE PROVIDED TO RECEIVE UP TO #4/0 WIRE. GROUND #4 BARE TO EQUIPMENT GROUND PROVIDED ON POST.



SOUTH 'C' CENTER 'B' NORTH 'A' BUILDING

BRANCH	QUANTITY	WIRE SIZE	CONDUIT	MAIN BREAKER	AMPS
#4	3	ALUM. #0	2 1/2" A	#4	70
#5	3	#0	2 1/2" A	#5	60
#1	3	#0	2" B	#1	60
#2	3	#4	1 1/2" C	#2	60
#3	3	#0	2 1/2" D	#3	125
#6	3	#4	TO BUILDING	#6	60
#2	3	ALUM. #2	2 1/2" A	#2	60
#6	3	#0	2 1/2" A	#6	60
#1	3	#0	2" B	#1	100
#3	3	#2	2" C	#3	70
#4	3	#0	3" D	#4	90
#5	3	#0	2" B	#5	70
#7	3	#0	2" B	#7	100
#5	3	ALUM. #0	2 1/2" A	#5	70
#3	3	#0	2" B	#3	70
#4	3	#0	2" C	#4	70
#2	3	#0	2 1/2" D	#2	60
#1 (N.I.C.)	3	NOT IN CONTRACT	TO BUILDING	#1	60

SURVEYED BY	DRAWN BY	Aug. '65	NO.	DATE	BY	REVISIONS	NO.	DATE	BY	REVISIONS
DESIGNED BY W. J. POVET	AUG. '66	CHECKED BY G. MILLER	9-68	1.	N.H.S.-L.B. J.Y.	WIRING DIA. REV., TERMINAL BLOCK ADDED	3.			
	DATE		DATE	2.	12-68 G.M.	ALUMINUM WIRE WAS COPPER.	4.			