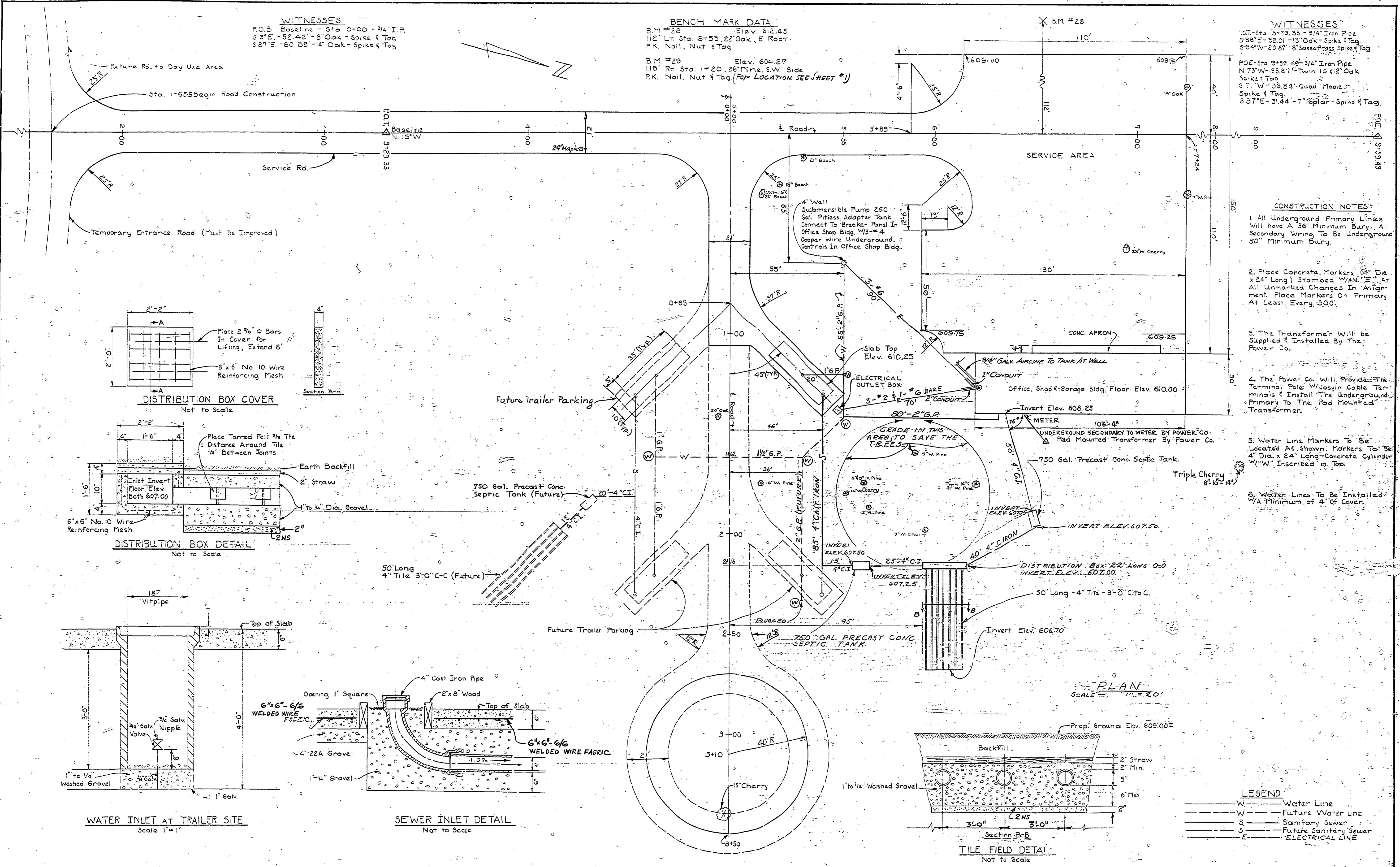


WITNESSES
 P.O.B. Baseline - Sta. 0+00 - 3/4" I.P.
 S 3° E - 52.42' - 8" Oak - Spike & Tag
 S 87° E - 60.28' - 14" Oak - Spike & Tag

BENCH MARK DATA
 B.M. #25 Elev. 612.45
 112' Lt. Sta. 8+53.22 Oak, E. Root
 P.K. Nail, Nut & Tag
 B.M. #29 Elev. 604.27
 118' Rt. Sta. 1+20.26 Pine, S.W. Side
 P.K. Nail, Nut & Tag (FOR LOCATION SEE SHEET #1)

WITNESSES
 P.O.E. Sta. 3+29.33 - 3/4" Iron Pipe
 S 88° E - 38.01' - 13" Oak - Spike & Tag
 S 94° W - 23.67' - 3" Sassafras Spike & Tag
 P.O.E. Sta. 9+58.49 - 3/4" Iron Pipe
 N 73° W - 33.81' - Twin 16" 12" Oak
 Spike & Tag
 S 71° W - 36.84' - Quail Maple
 Spike & Tag
 S 37° E - 31.44' - 7" Poplar - Spike & Tag



- CONSTRUCTION NOTES:**
- All Underground Primary Lines Will have A 36" Minimum Bury. All Secondary Wiring To Be Underground 30" Minimum Bury.
 - Place Concrete Markers (4" Dia. x 24" Long) Stamped W/AN "E" AT All Unmarked Changes In Alignment. Place Markers On Primary At Least Every 300'.
 - The Transformer Will be Supplied & Installed By The Power Co.
 - The Power Co. Will Provide The Terminal Pole W/Joslyn Cable Terminals & Install The Underground Primary To The Pad Mounted Transformer.
 - Water Line Markers To Be Located As Shown. Markers To Be 4" Dia. x 24" Long Concrete Cylinder W/"W" Inscribed in Top.
 - Water Lines To Be Installed W/A Minimum of 4' Of Cover.

SURVEYED BY D. BISSELL	2-69	DRAWN BY J. EDWARDS	3-69	NO. DATE BY	REVISIONS	NO. DATE BY	REVISIONS	MICHIGAN DEPARTMENT OF CONSERVATION	SERVICE AREA SITE PLAN	SHEET NO. OF	P.J. HOFFMASTER STATE PARK
DESIGNED BY A. PETRAVICIUS	3-69	CHECKED BY	DATE	1. 10-13-69 A.P. GRADE TO SAVE TREES.	3.	2. 3-25-70 H.M. REVISED WATER LINE	4.				