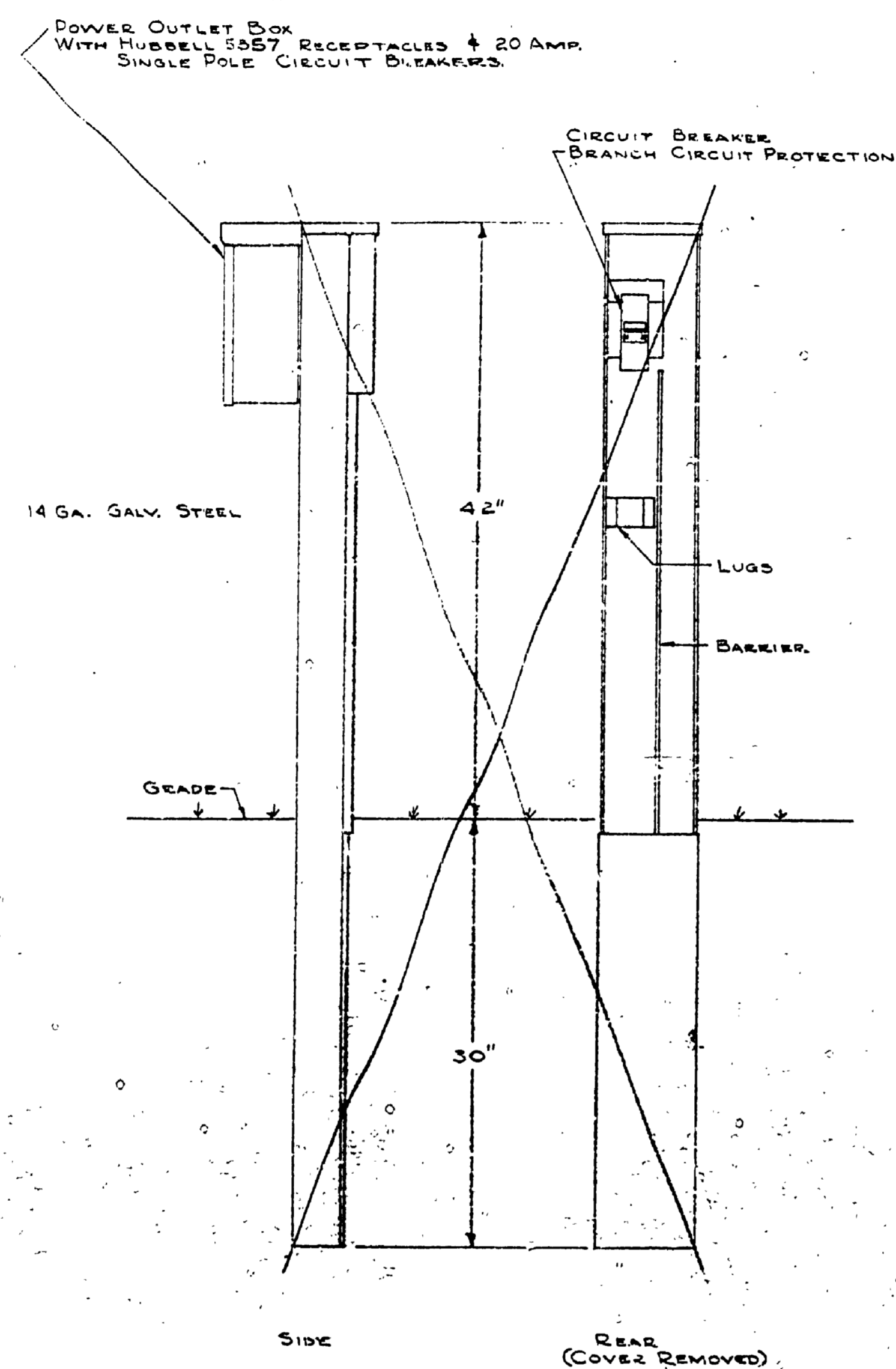
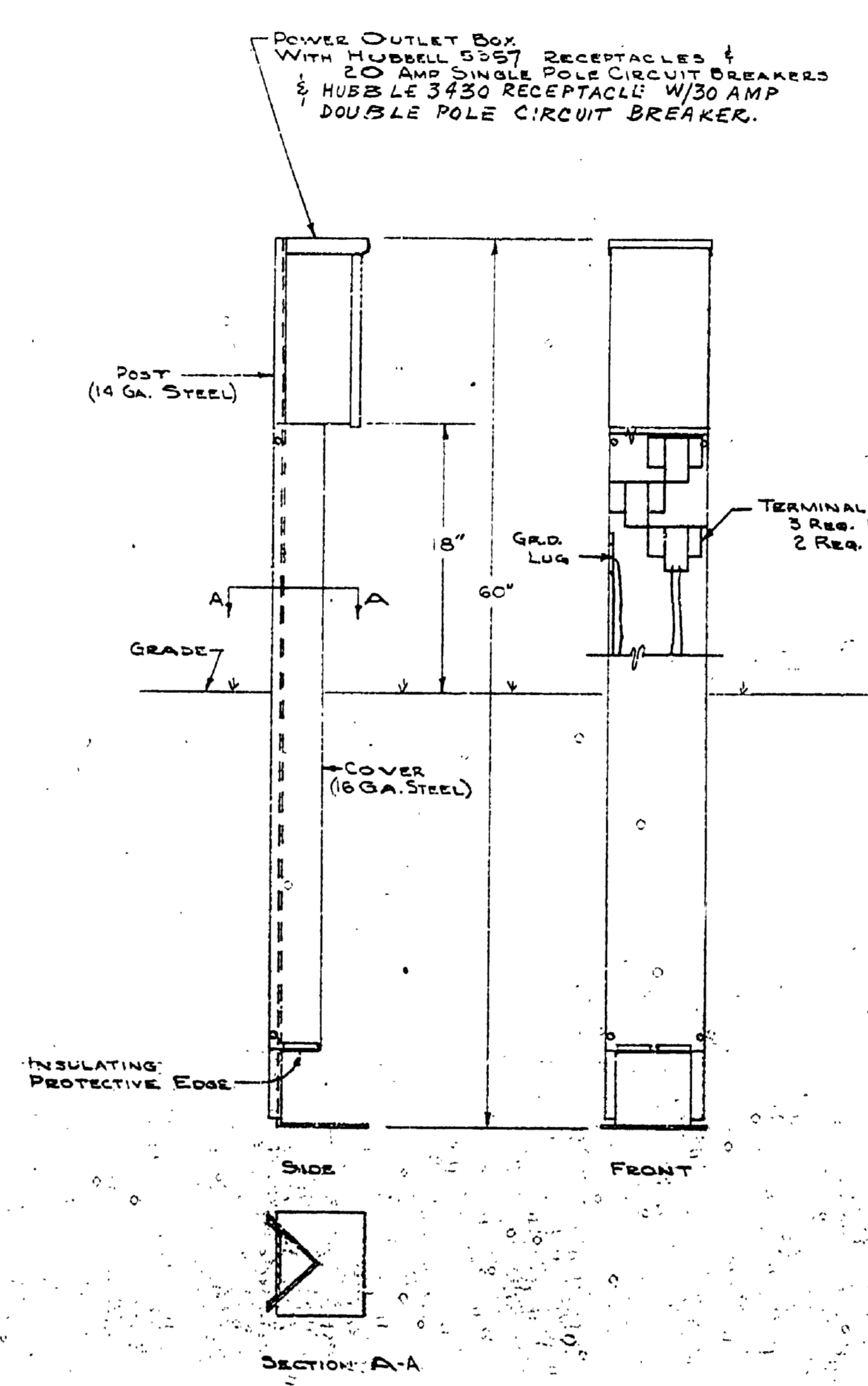


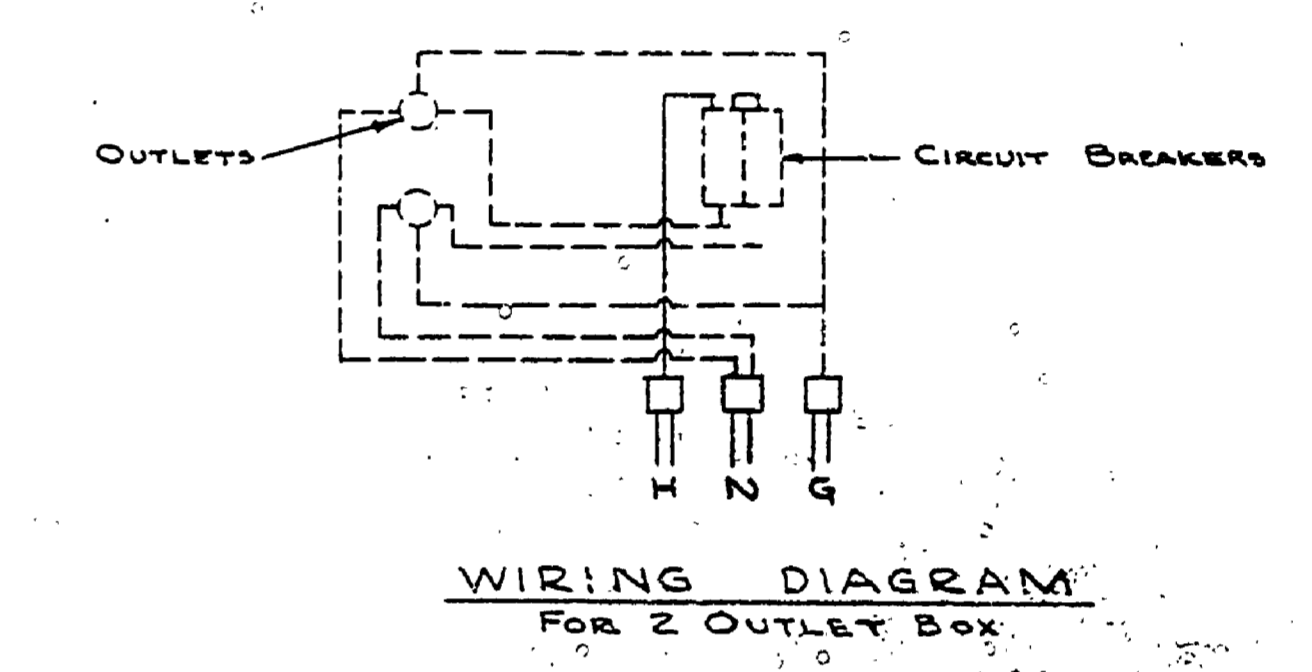
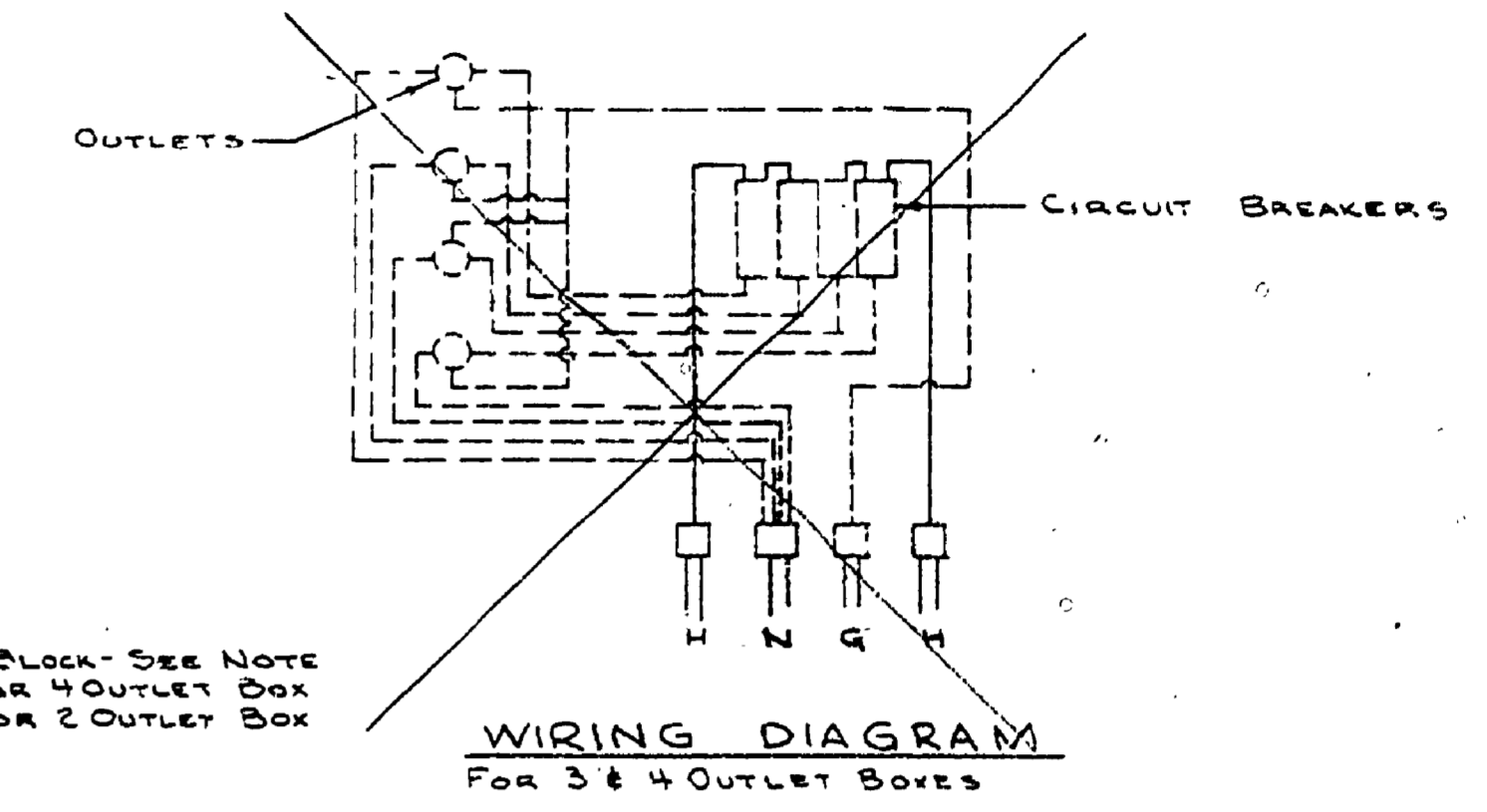
ENTRANCE POST
WITH METER AND MAIN DISCONNECT



JUNCTION POST
WITH OUTLET BOX & BRANCH CIRCUIT PROTECTION



MOUNTING POST
WITH OUTLET BOX



NOTE: THESE POSTS ARE DESIGNED TO PERMIT LOOPING OF CABLE FROM ONE UNIT TO THE NEXT. SPLICING TO BE DONE IN POST. LUGS ARE PROVIDED TO RECEIVE UP TO #4/0 WIRE. GROUND W/ G BARE TO EQUIPMENT GROUND PROVIDED ON POST.

SURVEYED BY	DRAWN BY	NO.	DATE	BY	REVISIONS	NO.	DATE	BY	REVISIONS
DESIGNED BY W. J. Dwyer	J. Yema	1.	AUG. 60			3.			
	CHECKED BY	2.				4.			

MICHIGAN
DEPARTMENT OF CONSERVATION

STANDARD PLAN
UNDERGROUND SECONDARY
FOR CAMPGROUND

SHEET NO. OF
FOR PROJECT NO. PA 110-75-2439-024

P.J. HOFFMASTER STATE PARK
SHEET 4 OF 4 PLAN NO. E-103