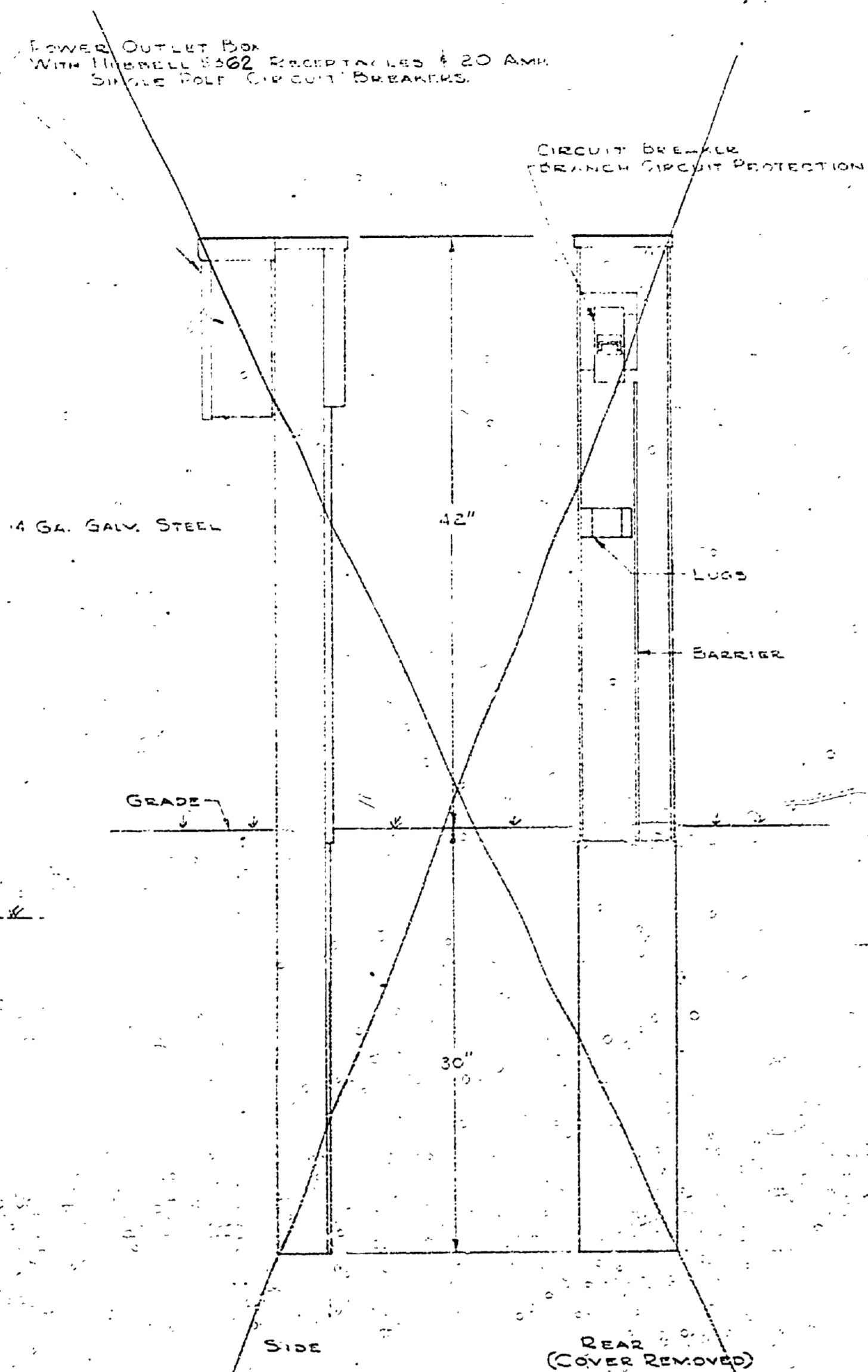
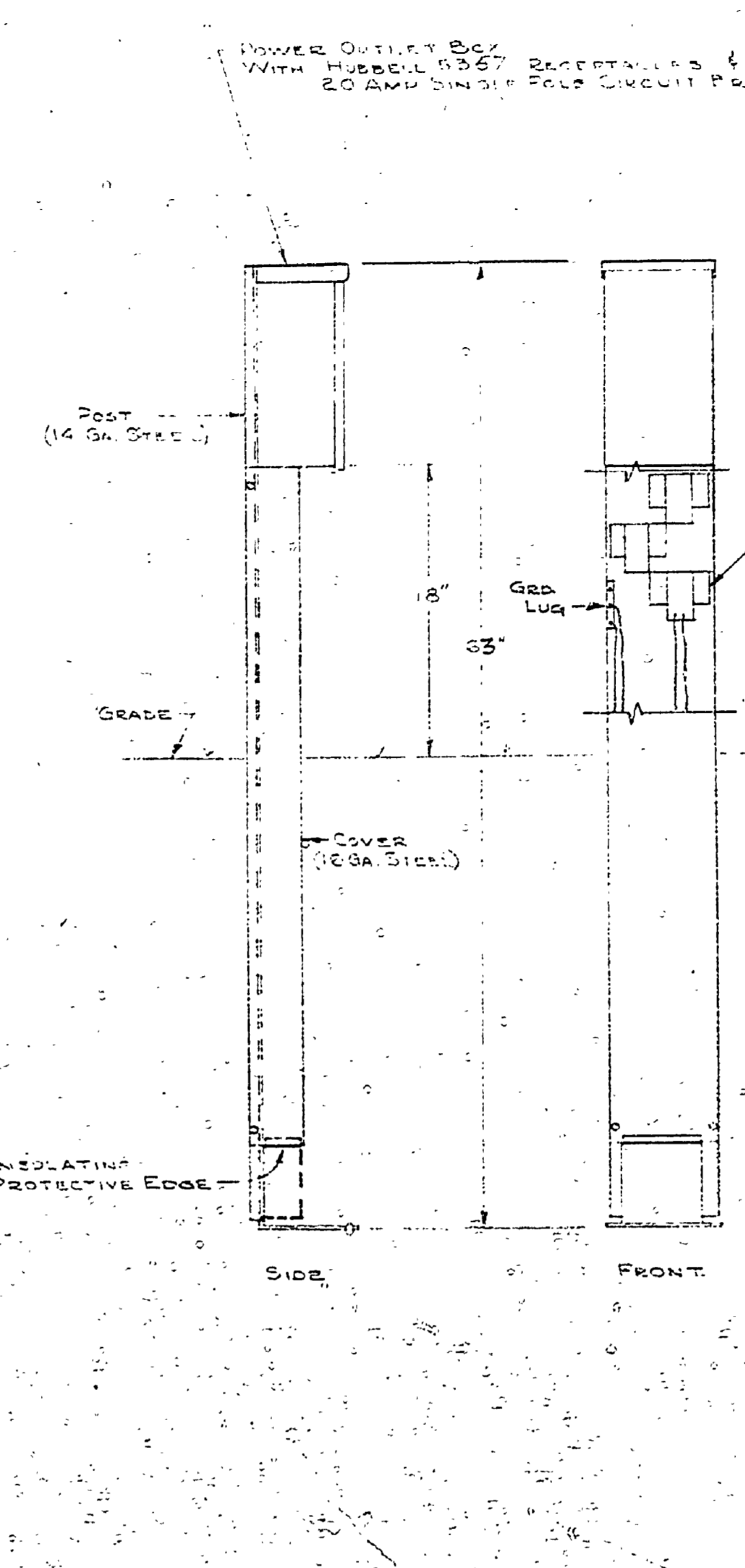


ENTRANCE RACK
WITH METER SOCKET & CIRCUIT BREAKER PANEL BOARD

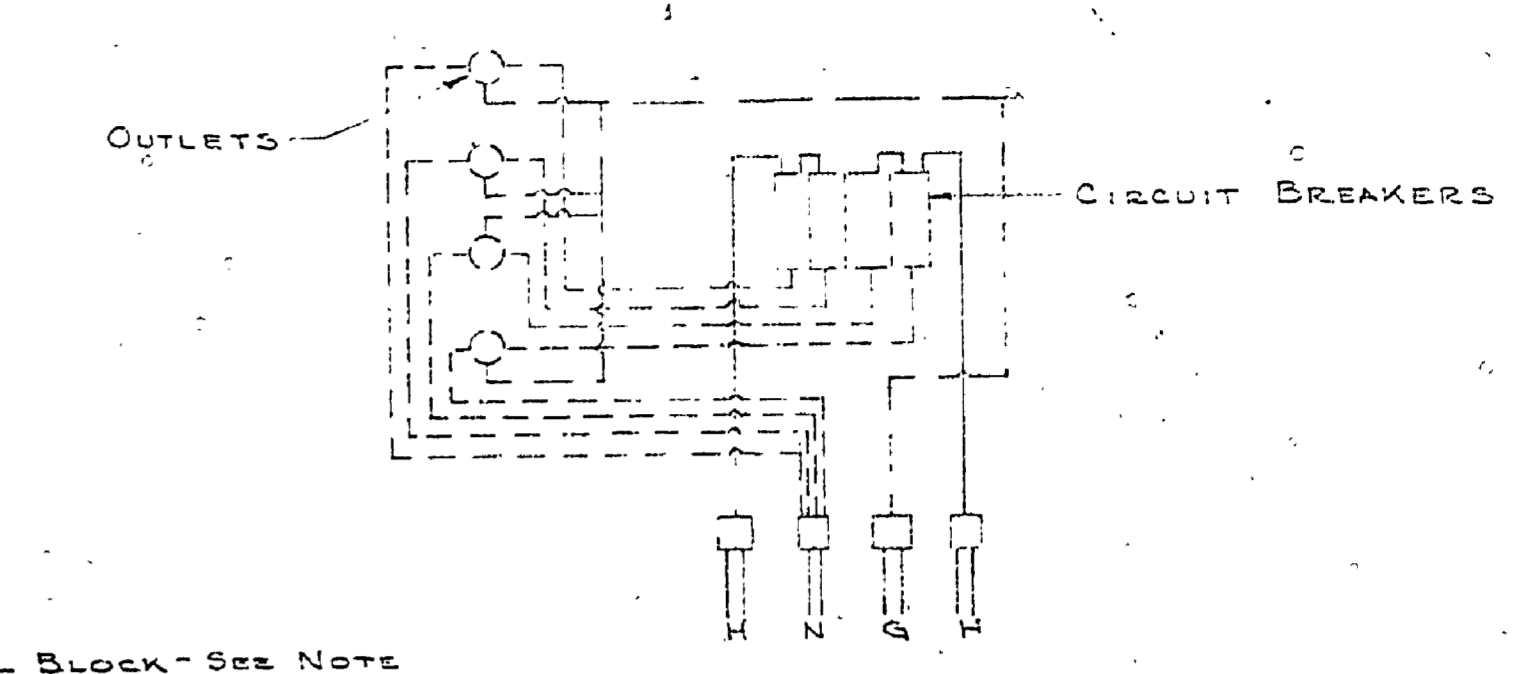
NOTE: GROUND ELECTRICAL SYSTEM AT DISTRIBUTION PANELBOARD TO NEAREST BURIED WATER PIPE.



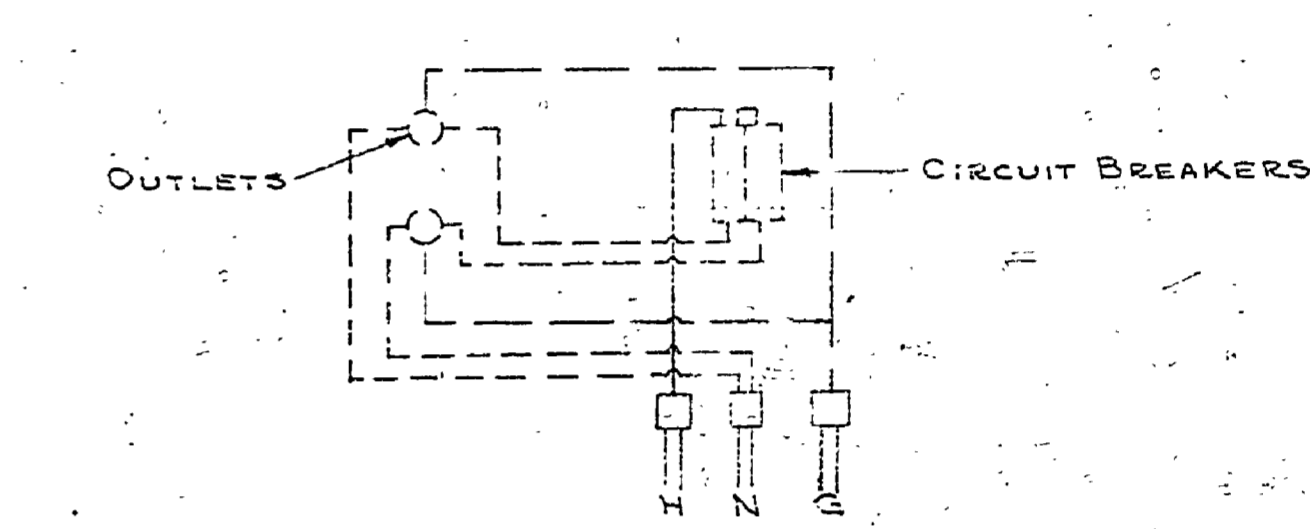
JUNCTION POST
WITH OUTLET BOX & BRANCH CIRCUIT PROTECTION



MOUNTING POST
WITH OUTLET BOX

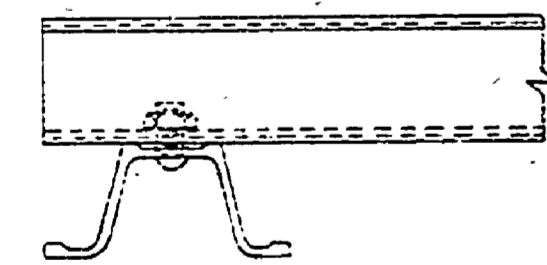


WIRING DIAGRAM
FOR 4 OUTLET BOXES



WIRING DIAGRAM
FOR 2 OUTLET BOXES

NOTE: THESE POSTS ARE DESIGNED TO PERMIT LOOPING OF CABLE FROM ONE UNIT TO THE NEXT SPACING TO BE DONE IN POST. LUGS ARE PROVIDED TO RECEIVE UP TO #10 WIRES. BRACING TO EQUIPMENT GROUND PROVIDED ON POST.



SECTION A-A
NO SCALE

NOTE:
REMOVE EXISTING WIRES IN BRANCH #4, CONDUIT "C" AND REPLACE WITH THREE #10 WIRES PER PLAN.
REMOVE EXISTING WIRES IN BRANCH #2, CONDUIT "D" AND REPLACE WITH THREE #10 WIRES PER PLAN
BRANCH #1 IS IN BUILDING CONTRACT

INSTALL CIRCUIT BREAKERS IN PANEL BOARD FOR RESPECTIVE LINES DESIGNATED ON PLAN AS FOLLOWS:

SOUTH CAMPGROUND EXTENSION TOILET & SHOWER BLDG. "D" T#4 Δ

SOUTH CAMPGROUND BUILDING "C" T#3 Δ (EXISTING)

BRANCH	QUANTITY	WIRE SIZE	CONDUIT	MAIN BREAKER	AMPS.
#1	3	ALUM. #2	2 1/2" A	BRANCH #1	60 AMPS.
#2	3	" #1		BRANCH #2	60 AMPS.
#3	3	" #0	2" B	BRANCH #3	90 AMPS.
#4	3	" #2	2" C	BRANCH #4	60 AMPS.
#5	3	" #2	2 1/2" D	BRANCH #5	60 AMPS.
#6	3	" #2		T & S BLDG. "D" BRANCH #6	60 AMPS.
#GNIC.				MAIN BREAKER	225 AMPS.
#5 EXISTING	3	ALUM #0	2 1/2" A	BRANCH #5	70 AMPS.
#6 EXISTING	3	" #0		BRANCH #6	70 "
#3 EXISTING	3	" #0	2" B	#3	70 "
#4 REMOVE	3 & REPLACE	" #0	2" C	#4	70 "
#2 REMOVE	3 & REPLACE	" #0	2 1/2" D	#2	60 "
#1 N.I.C.				#1	60 "

INSTALL BREAKER THIS CONTRACT.

INSTALL BREAKER THIS CONTRACT.