

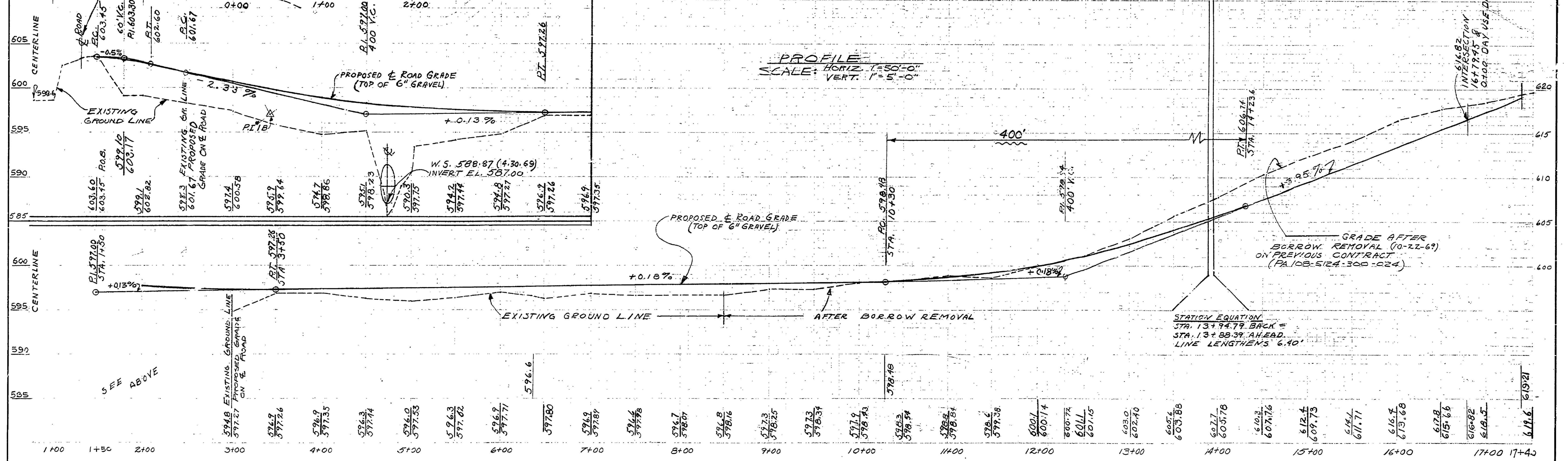
**PLAN**  
SCALE 1" = 50'

600 ADDITIONAL QUANTITIES P.O.B TO 17+40  
 CLEARING & GRUBBING 1.75AC.  
 TOP SOIL LEEDING & MULCH 1.25AC.  
 JONES GRASS PLANTING 1.25AC.  
 22-AGRAM 6900 SQ. YDS.  
 PRIME 1,297 GALLONS  
 BIT. MAT 14.5 TONS.

**NOTE:**

ENTRANCE ROAD FROM STA. 0+00-166.65 TO STA. 17+40 INCLUDING TURNAROUND.

ITEM	QUANTITY	UNIT
TOTAL EXCAVATION	5,800	CU. YDS.
TOTAL BORROW	5,800	CU. YDS.
ENTRANCE ROAD		CU. YDS.
TOTAL FILL (INCL. 20% SHRINKAGE)	5,800	CU. YDS.



SURVEYED BY D. BISSELL 9-69	DRAWN BY G. MILLER 5-69	NO. DATE BY REVISIONS	NO. DATE BY REVISIONS	MICHIGAN DEPARTMENT OF CONSERVATION	ENTRANCE ROAD PLAN & PROFILE	SHEET NO. 10 OF 24 FOR PROJECT NO. 1065	P.J. HOFFMASTER STATE PARK SHEET 10 OF 24 PLAN NO. E-105
DESIGNED BY A. PETRAVICIUS 4-69	CHECKED BY	1. 10-30-69 G.M. ADD GRADE AFTER BORROW	3.				
DATE	DATE	2.	4.				