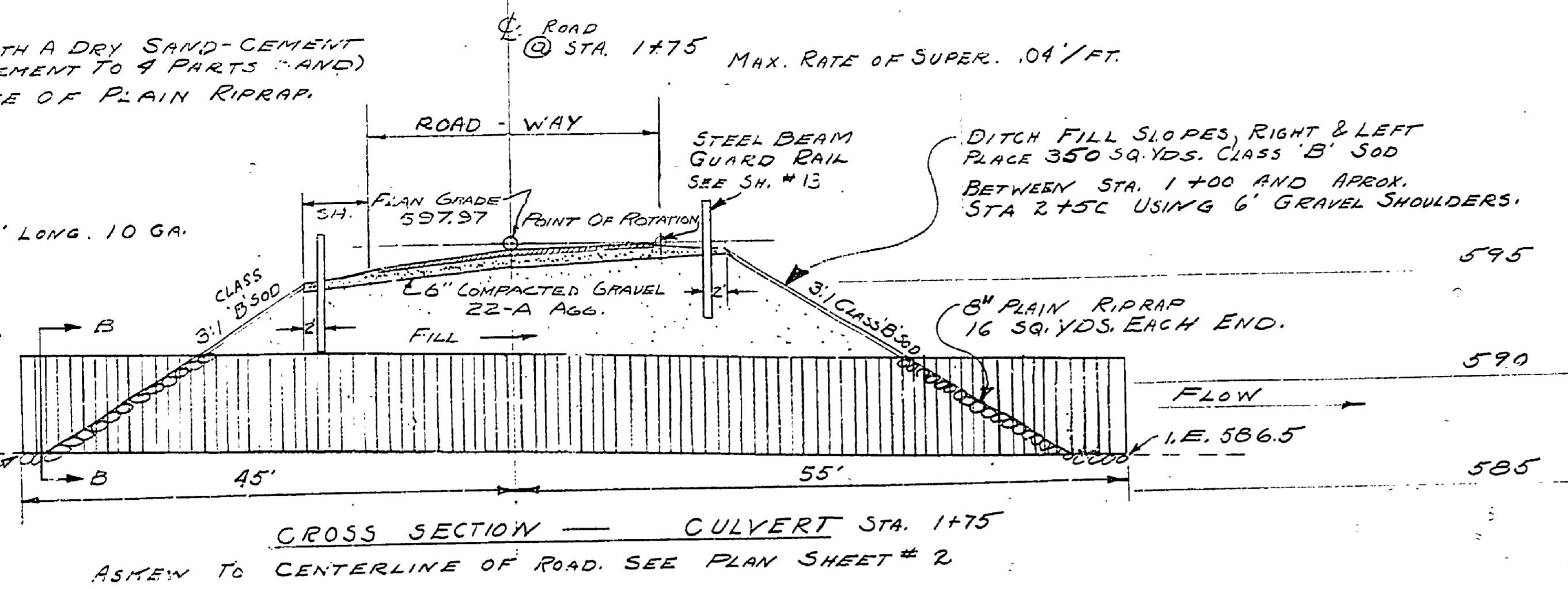


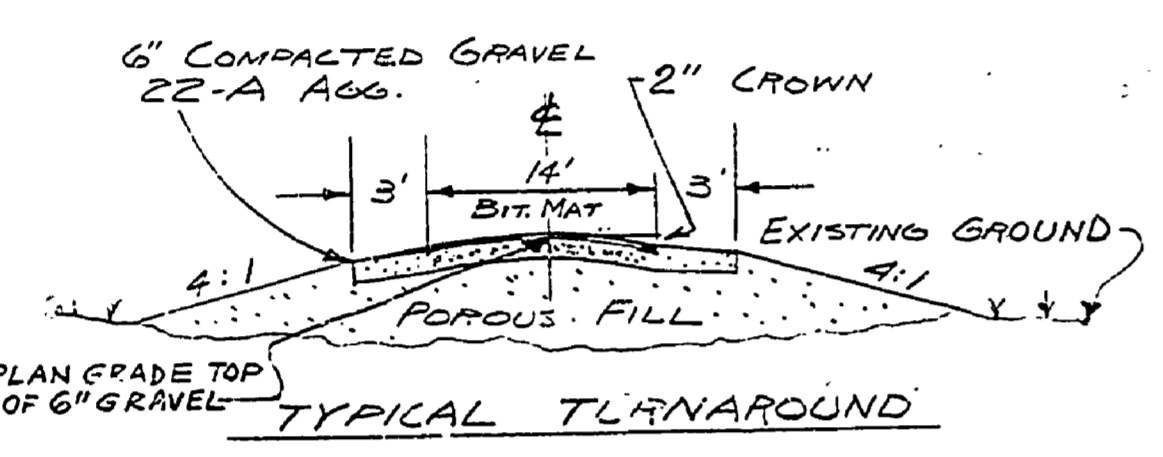
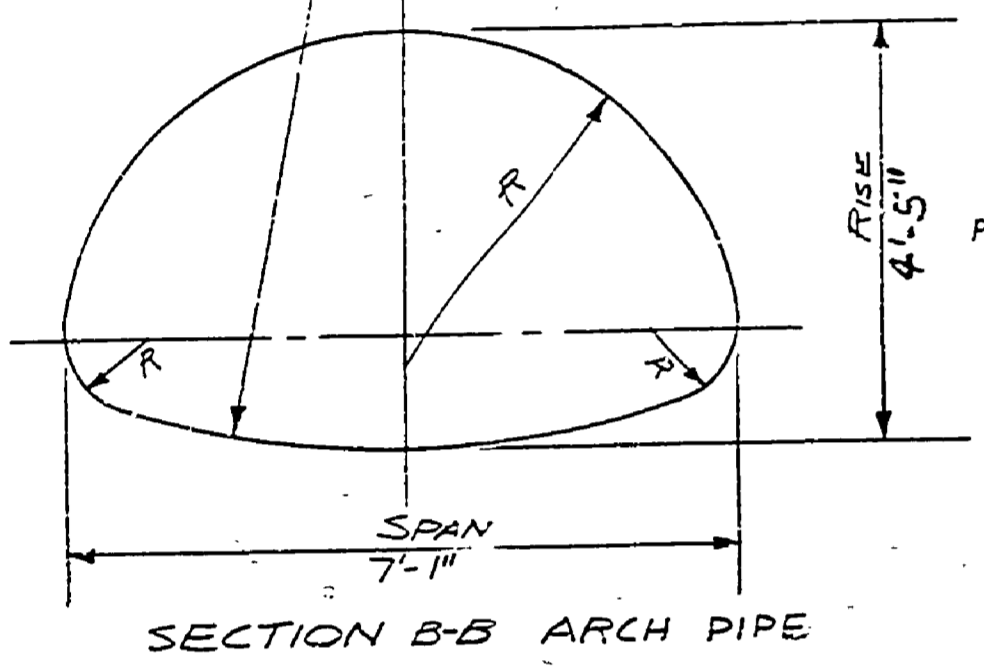
ALTERNATE MATERIAL:  
SAND BAGS FILLED WITH A DRY SAND-CEMENT MIXTURE (1 PART CEMENT TO 4 PARTS SAND) MAY BE USED IN PLACE OF PLAIN RIPRAP.

ARCH TYPE CULVERT 100' LONG, 10 GA. SPAN 7'-11" RISE 4'-5"

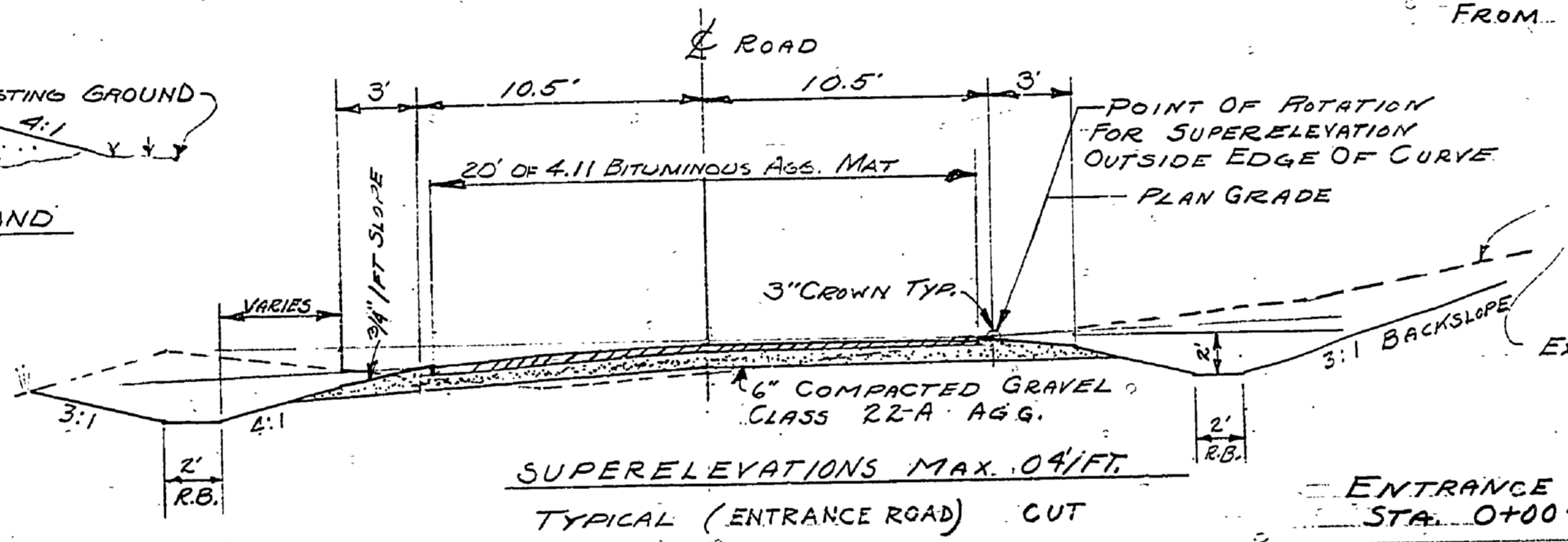
CLEAN DITCH AT +100% GRADE 75' UPSTREAM & DOWNSTREAM @ -100%



CROSS SECTION - CULVERT STA. 1+75  
ASKED TO CENTERLINE OF ROAD. SEE PLAN SHEET # 2

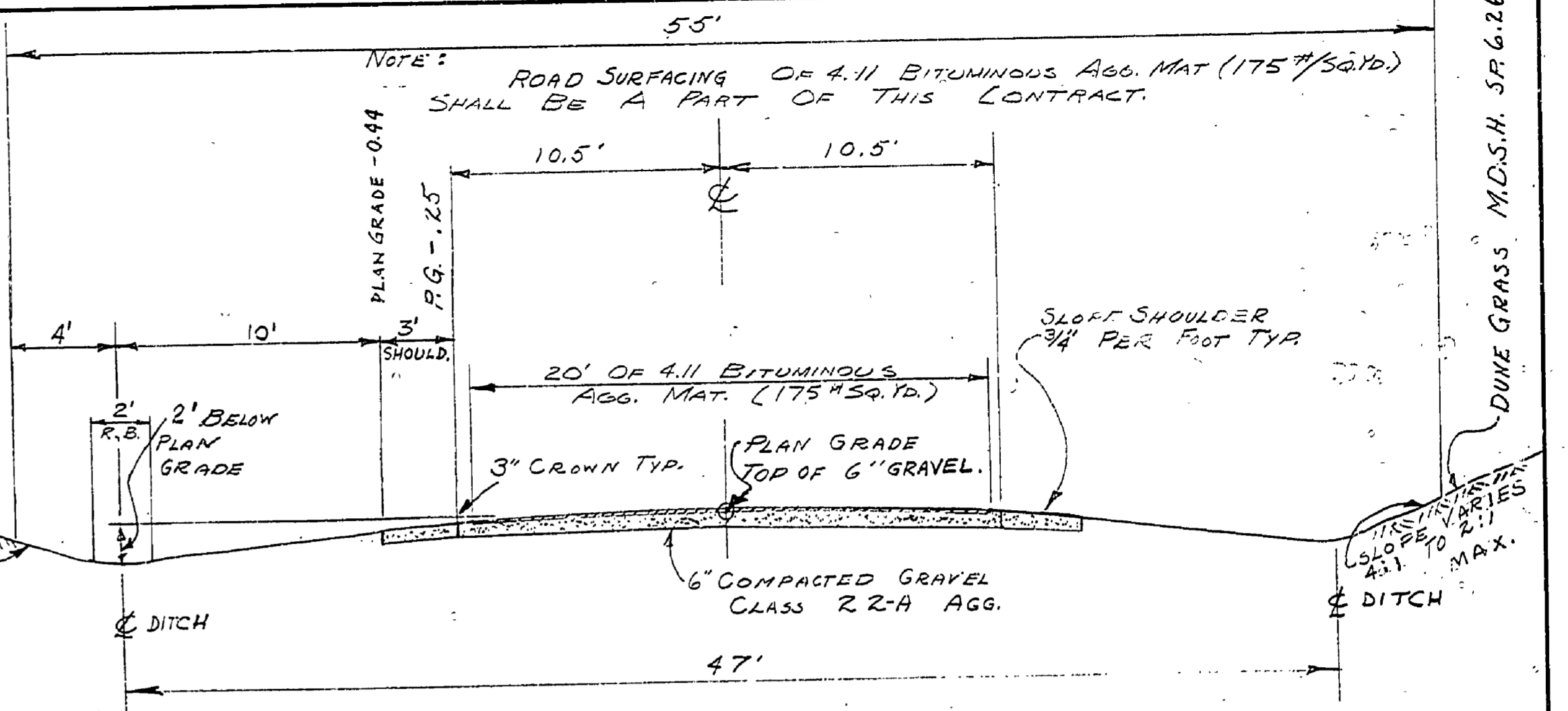


TYPICAL PLAN ROUND



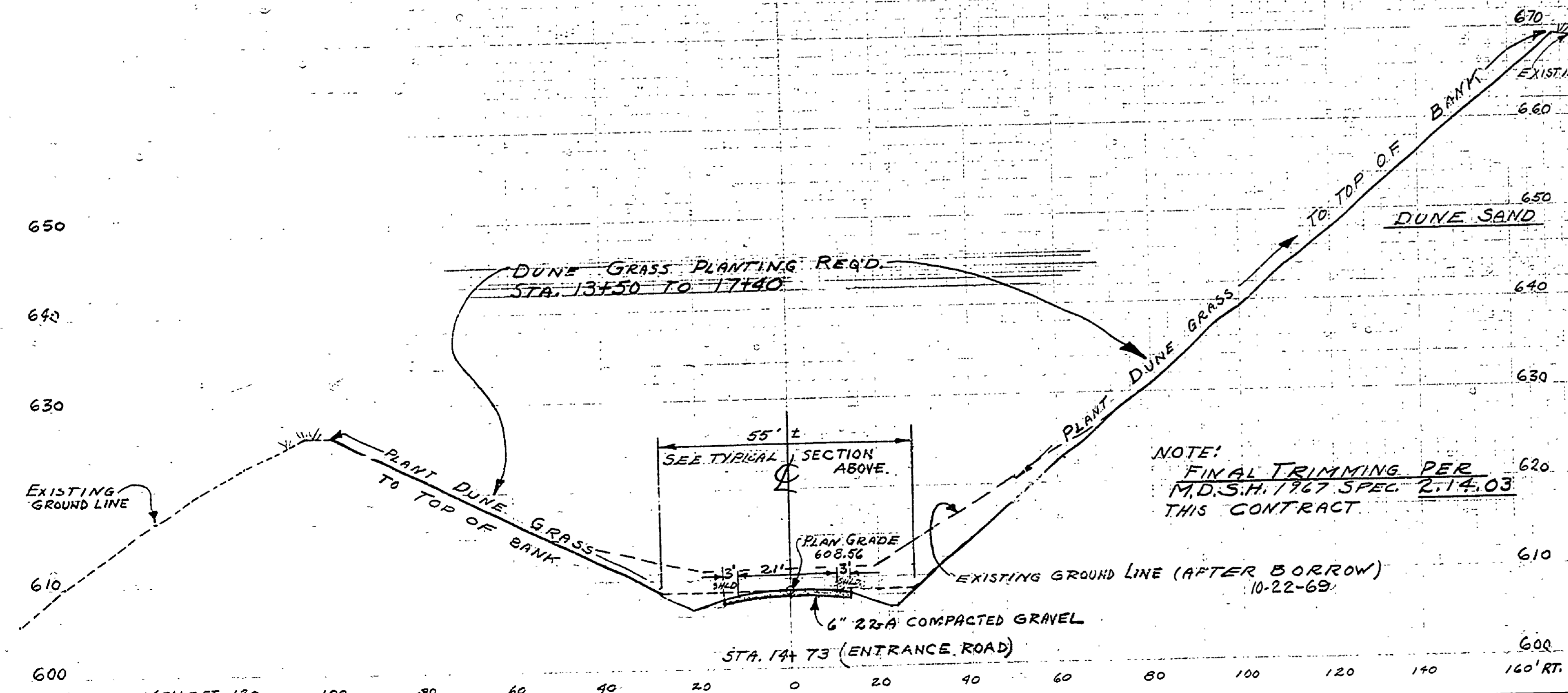
SUPERELEVATIONS MAX. 0.4%/FT.  
TYPICAL (ENTRANCE ROAD) CUT

ENTRANCE ROAD SECTIONS  
STA. 0+00-166.65 TO STA. 1+400



TYPICAL STA. 14+00 TO APPROX. 17+40 OF THIS CONTRACT  
(ENTRANCE ROAD) THRU BORROW AREA - SCALE: 1" = 5'-0"

TYPICAL SECTION OF 21' ROAD - (FILL)  
TYPICAL (ENTRANCE ROAD)



NOTE:  
FINAL TRIMMING PER  
M.D.S.H. 1767 SPEC 2-14.03  
THIS CONTRACT  
10-22-69.

SURVEYED BY J. BISSSELL	12-68	DRAWN BY G. MILLER	4-69	NO. 1	DATE 1/26/69	BY G.M.	REVISIONS REVISED EXISTING GROUND	NO. 3	DATE	BY	REVISIONS
DESIGNED BY	DATE	CHECKED BY	DATE	NO. 2	DATE	BY	REVISIONS	NO. 4	DATE	BY	REVISIONS

MICHIGAN DEPARTMENT OF CONSERVATION

ENTRANCE ROAD SECTIONS

SHEET NO. 12 OF 24  
FOR PROJECT NO. 1065

R.J. HOFFMASTER STATE PARK  
PLAN NO. E-105

DUNE GRASS M.D.S.H. SP. 6.26