

WITNESSES

ROB - DAY USE ROAD STA. 0+00  
 ENTRANCE ROAD STA. 16+79.45 - 3/4" IRON PIPE  
 N 33°E - 59.22' - 8" OAK SPIKE  
 N 72°E - 59.30' - 24" BEECH - SPIKE & TAG  
 P.I. #1 - STA. 1+68.61 - 3/4" IRON PIPE  
 S 62°E - 60.09' - 21" OAK SPIKE  
 N 24°E - 32.92' - 18" MAPLE SPIKE  
 P.C.T. - 3+69.19 - 3/4" IRON PIPE  
 S 26°E - 74.80' - 12" MAPLE (B.M.#23) SPIKE 6" HIGH  
 S 69°E - 61.24' - 13" OAK SPIKE 6" HIGH

WITNESSES

P.I. #2 - STA. 11+76.90 - 3/4" IRON PIPE  
 S 42°E - 6.06' - 13" OAK SPIKE  
 S 67°W - 11.76' - 5 1/4" ASH SPIKE  
 N 68°W - 11.53' - 15" OAK SPIKE  
 P.C.T. STA. 17+54.22 - 3/4" IRON PIPE  
 S 48°W - 79.29' - 11" ASH SPIKE 6" HIGH  
 N 13°W - 52.86' - 10" BEECH SPIKE 3" HIGH  
 N 37°E - 74.98' - 15" MAPLE SPIKE 5" HIGH

BENCH MARK

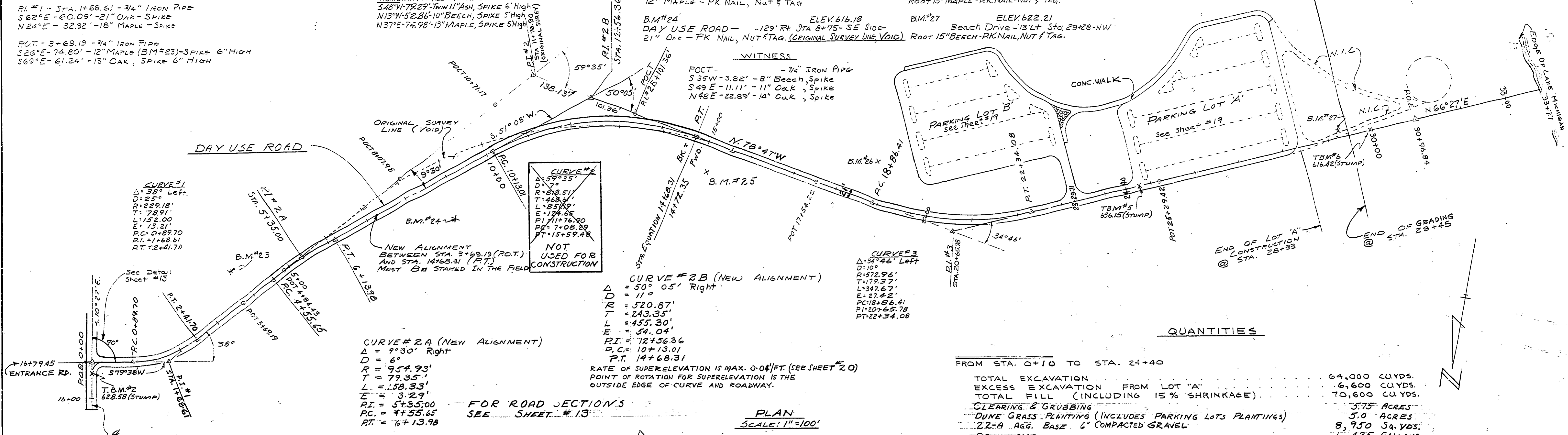
B.M.#21 ELEV. 597.32  
 ENTRANCE RD. 64' LEFT STA. 10+97 - W. ROOT  
 16" MAPLE - PK NAIL, NUT & TAG  
 B.M.#23 ELEV. 627.74  
 DAY USE ROAD - 72' LEFT STA. 3+92 - W. ROOT  
 12" MAPLE - PK NAIL, NUT & TAG  
 B.M.#24 ELEV. 616.18  
 DAY USE ROAD - 129' RT. STA. 8+75 - SE SIDE  
 21" OAK - PK NAIL, NUT & TAG. (ORIGINAL SURVEY LINE VOID)

WITNESSES

B.M.#25 ELEV. 670.00  
 Beach Drive 66' RT. STA. 15+18 - NW  
 Root 16" OAK - PK NAIL, NUT & TAG.  
 B.M.#26 ELEV. 612.40  
 BEACH DRIVE - 90' LT. STA. 18+68 - NW  
 Root 13" MAPLE - PK NAIL, NUT & TAG.  
 B.M.#27 ELEV. 622.21  
 Beach Drive - 13' LT. STA. 29+28 - NW  
 Root 15" BEECH - PK NAIL, NUT & TAG.

WITNESSES

ROE - STA. 30+76.84 - 3/4" IRON PIPE  
 N 47°W - 3.79' - 11" OAK SPIKE  
 S 48°E - 7.45' - 6" OAK SPIKE  
 S 35°W - 14.68' - 8" W. PIN SPIKE



QUANTITIES

FROM STA. 0+10 TO STA. 24+40

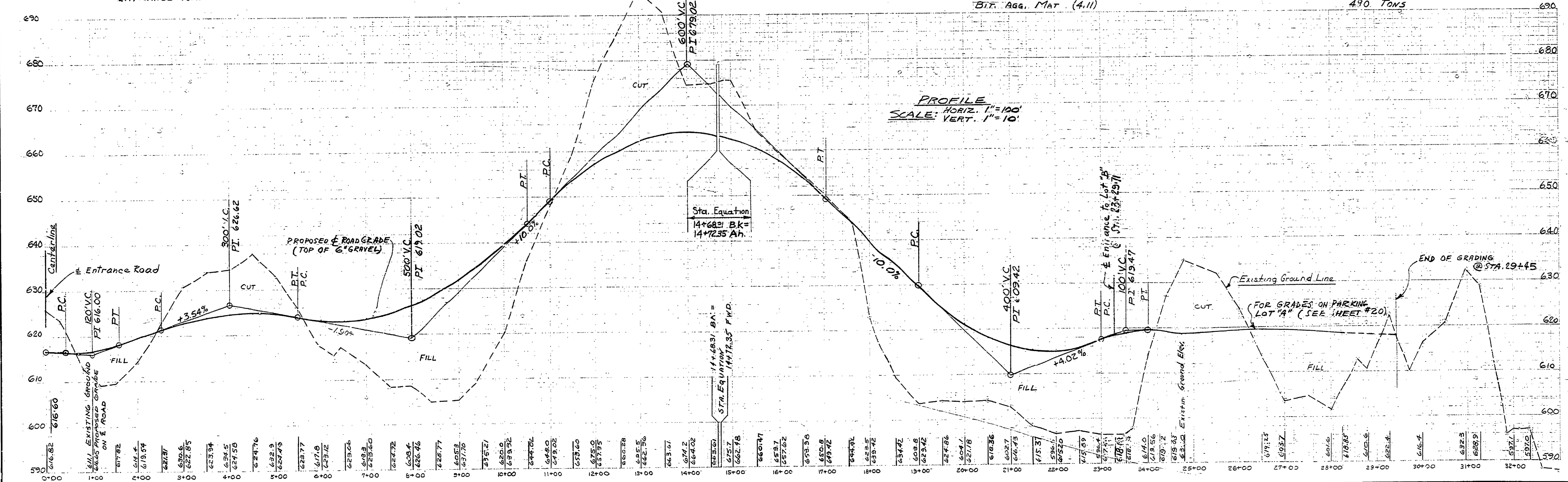
TOTAL EXCAVATION	64,000 CU.YDS.
EXCESS EXCAVATION FROM LOT "A"	6,600 CU.YDS.
TOTAL FILL (INCLUDING 15% SHRINKAGE)	70,600 CU.YDS.
CLEARING & GRUBBING	3.75 ACRES
DUNE GRASS PLANTING (INCLUDES PARKING LOTS PLANTINGS)	5.0 ACRES
22-A AGG. BASE 6" COMPACTED GRAVEL	8,950 SQ. YDS.
PRIME COAT	1,425 GALLONS
BIT. AGG. MAT (4.11)	490 TONS

PLAN

SCALE: 1"=100'

PROFILE

SCALE: HORIZ. 1"=100'  
 VERT. 1"=10'



SURVEYED BY J. BISSELL	1-69	DRAWN BY R.H., B.B., G.M.	NO. 1	DATE	BY	REVISIONS	NO. 2	DATE	BY	REVISIONS	MICHIGAN DEPARTMENT OF CONSERVATION	DAY USE ROAD PLAN & PROFILE	SHEET NO. 17 OF 24	FOR PROJECT NO. 1065	P.J. HOFFMASTER STATE PARK
DESIGNED BY JOHN NELSON	4-69	CHECKED BY	NO. 3	DATE	BY	REVISIONS	NO. 4	DATE	BY	REVISIONS					