

WITNESSES

POT	STA. 17+54.22	3/4" PIPE	SPIKE HIGH IN 7" W/IN 11" ASH.
S	48" W - 79.83	SPIKE	HIGH IN 10" BEECH.
Z	37" E - 74.98	SPIKE	HIGH IN 10" MAPLE
PI	STA. 20+65.76	3/4" PIPE	SPIKE IN 6" MAPLE
U	70" W - 17.66	SPIKE	IN 11" STRIPLE 17" OAK
U	68" S - 14.17	SPIKE	IN 11" ASH
POE	STA. 30+36.84	3/4" PIPE	SPIKE IN 6" OAK
S	47" W - 13.70	SPIKE	IN 11" OAK
U	40" S - 14.40	SPIKE	IN 6" W. PINE

BENCH MARKS

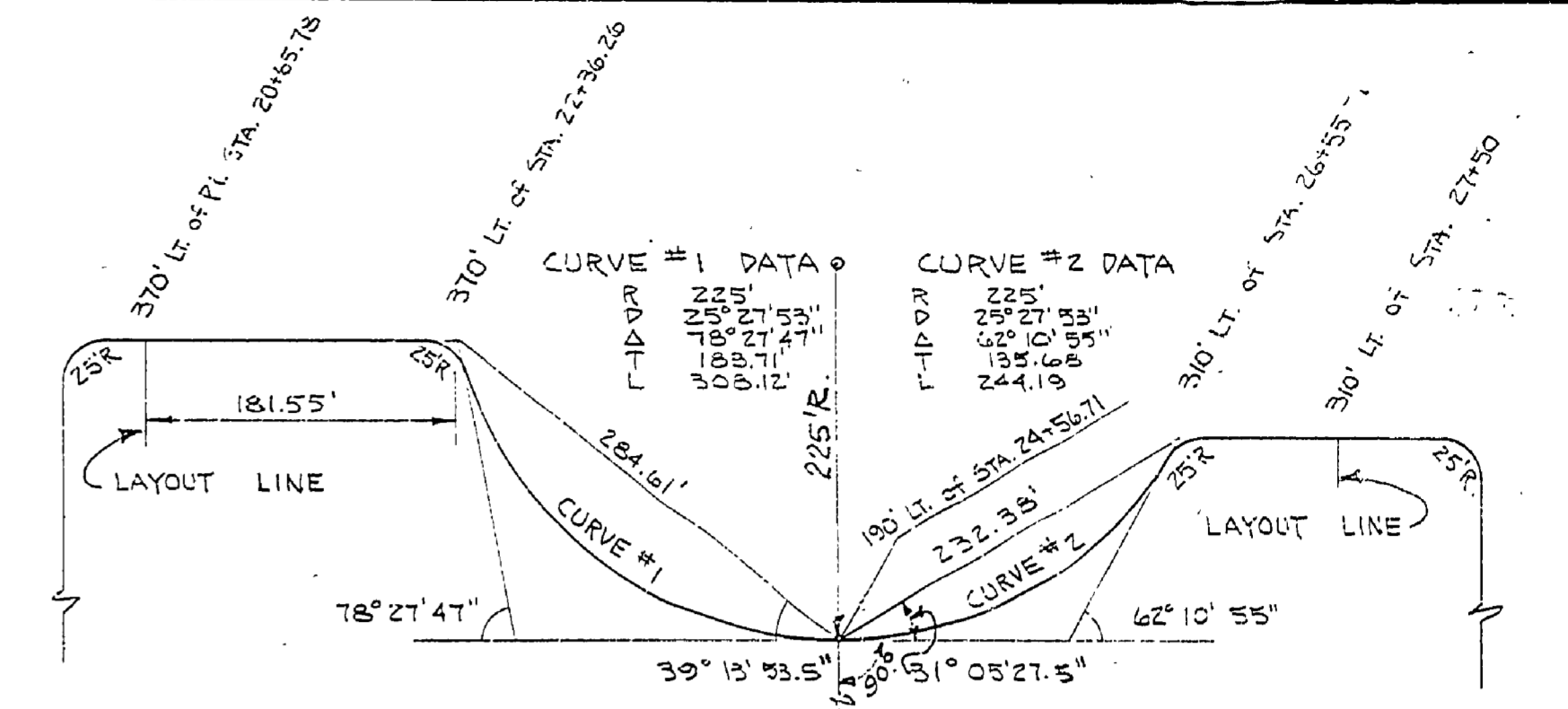
B.M. #26	ELEV. 612.40	PK NAIL, NUT & TAG IN N.W. ROOT OF 13" MAPLE 90' LT. OF STA. 18+65.
TBM #5	ELEV. 636.15	PK NAIL, NUT & TAG IN STUMP ON 15" BEECH 13' LT. OF STA. 29+22.
B.M. #27	ELEV. 622.21	PK NAIL, NUT & TAG IN N.W. ROOT OF 15" BEECH 13' LT. OF STA. 29+22.
TBM #6	ELEV. 616.42	PK NAIL, NUT & TAG IN STUMP ON 15" BEECH 13' LT. OF STA. 29+22.

CURVE #3 DATA

Δ	= 34° 46' Lt.
D	= 10'
L	= 572.36'
P	= 179.37'
L	= 27.42'
P	= 347.67'
PC	STA. = 18+86.41
PT	STA. = 22+34.08

NOTES:

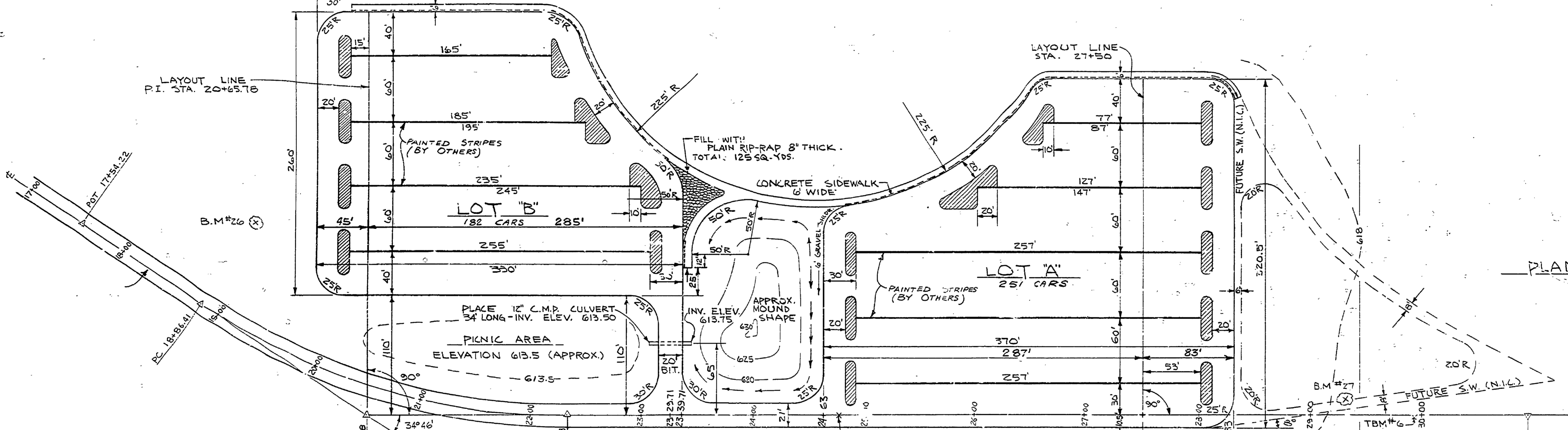
LOTS 'A' & 'B' EX. GROUND ELEV. PROP. TOP OF GRAVEL ELEV.
 FOR TOP OF BIT. MAT ELEV. ADD 1 3/4" (175#/SYD.) TO PROPOSED TOP OF GRAVEL ELEV.
 CENTER LINES (60' C-C) TO BE PAINTED BY OTHERS.
 ISLANDS TO BE PAINTED (SOLID) BY OTHERS.
 SHADING DENOTES BITUMINOUS MAT SURFACE.
 ON IRREGULAR SHAPED ISLANDS, RADII NOT SHOWN ARE TO BE 3' RADII.
 SIDEWALK EXPANSION JOINT EVERY 30' CUT JOINT 6" CENTER TO CENTER.



QUANTITIES

PARKING LOT 'B' INCLUDING ENTRANCE TO & PICNIC AREA

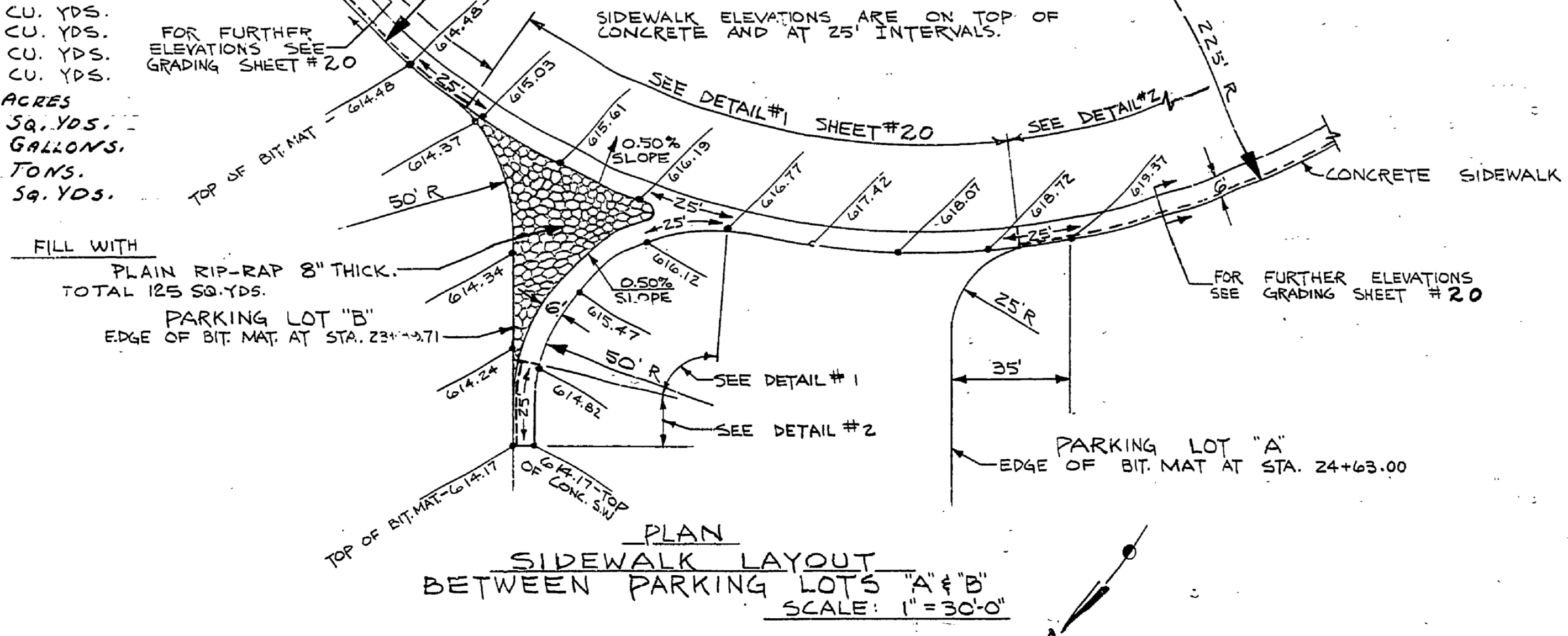
TOTAL EXCAVATION	7,000 CU. YDS.
EXCESS EXCAVATION FROM LOT 'A'	51,800 CU. YDS.
TOTAL FILL (INCLUDING 15% SHRINKAGE)	58,800 CU. YDS.
CLEARING & GRUBBING	4 ACRES
AGG. BASE B" TOTAL; 5" 22A, 3" 23A	9,800 SQ. YDS.
PRIME (BIT)	2,275 GAL.
BIT. AGG. MAT (4.11)	775 TONS
CONCRETE WALKS 5"	455 SQ. YDS.



QUANTITIES

PARKING LOT 'A' FROM STA. 24+40 TO STA. 29+45 (DAY USE ROAD)

TOTAL EXCAVATION	76,400 CU. YDS.
EXCESS EXCAVATION TO LOT 'B'	51,800 CU. YDS.
EXCESS EXCAVATION TO DAY USE ROAD	6,600 CU. YDS.
TOTAL FILL (INCLUDING 15% SHRINKAGE)	18,000 CU. YDS.
CLEARING & GRUBBING	4 ACRES
AGG. BASE B" TOTAL; 5" 22A, A AGG.; 3" 23A	12,650 SQ. YDS.
PRIME COAT (BIT)	3,000 GALLONS.
BIT. AGG. MAT (4.11)	1,015 TONS.
CONCRETE WALKS 5"	290 SQ. YDS.



SURVEYED BY	DESIGNED BY A. PETRAVICIUS	DRAWN BY B. BOYCE	E-69	NO.	DATE	BY	REVISIONS	NO.	DATE	BY	REVISIONS	MICHIGAN DEPARTMENT OF NATURAL RESOURCES	PARKING LAYOUT LOTS 'A' & 'B' SHEET TITLE	P.J. HOFFMASTER STATE PARK AREA OR PARK PROJECT DAY-USE AREA	PROJECT NO. 1065	SHEET 19 OF 24	PLAN NO. E-105
-------------	----------------------------	-------------------	------	-----	------	----	-----------	-----	------	----	-----------	--	---	--	------------------	----------------	----------------