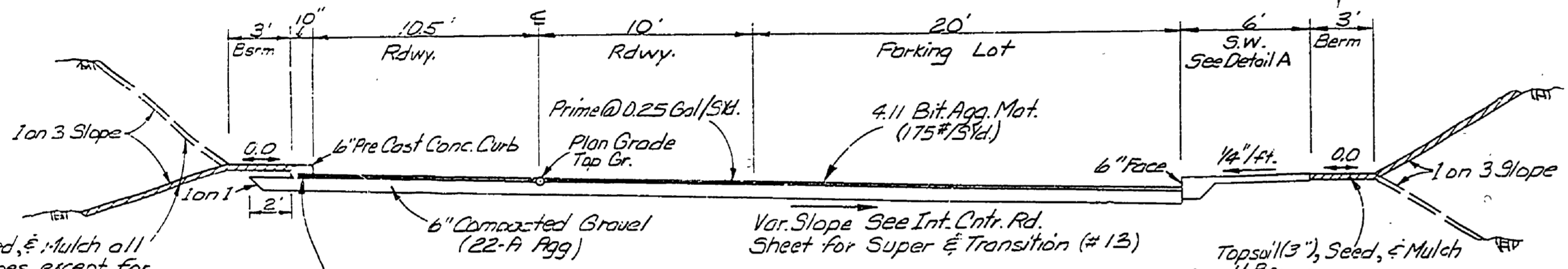
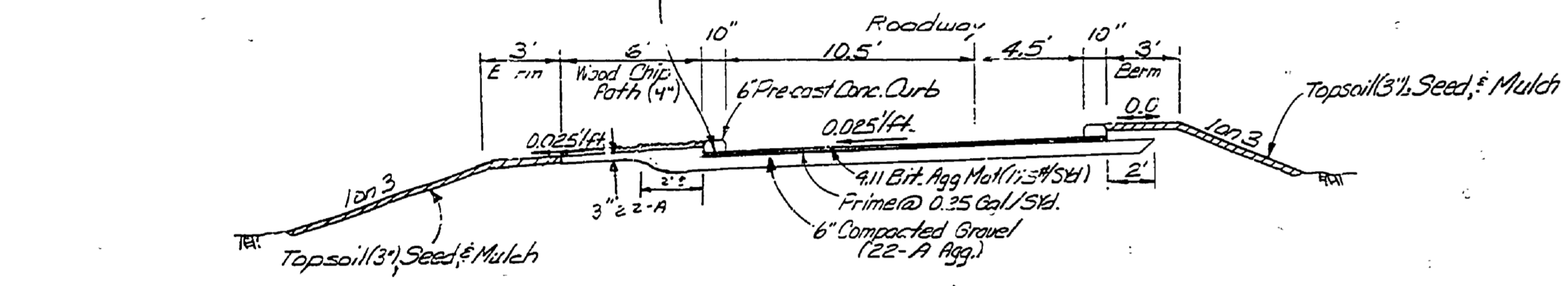


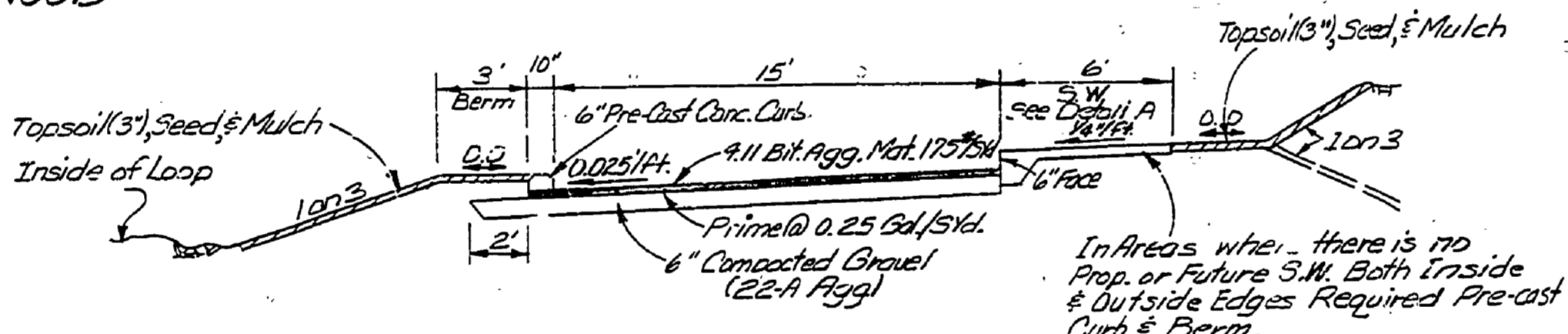
PARKING LOT
Section to Apply
Sta. 111+48 to 112+75



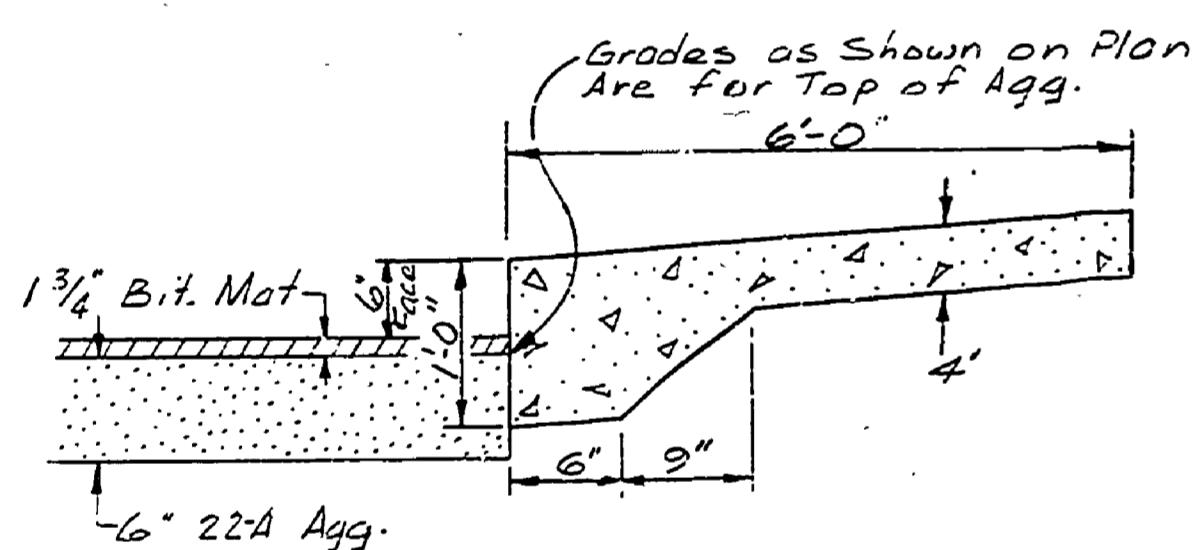
SUPERED PARKING LOT
Section to Apply
Sta. 108+40 to 111+48



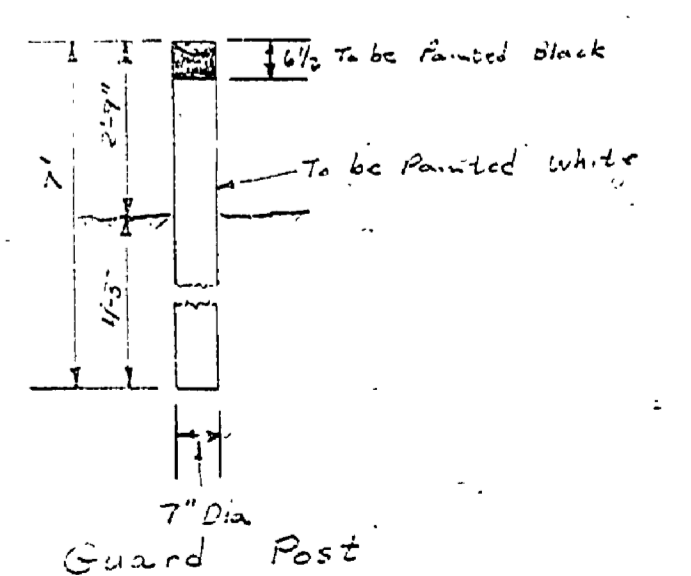
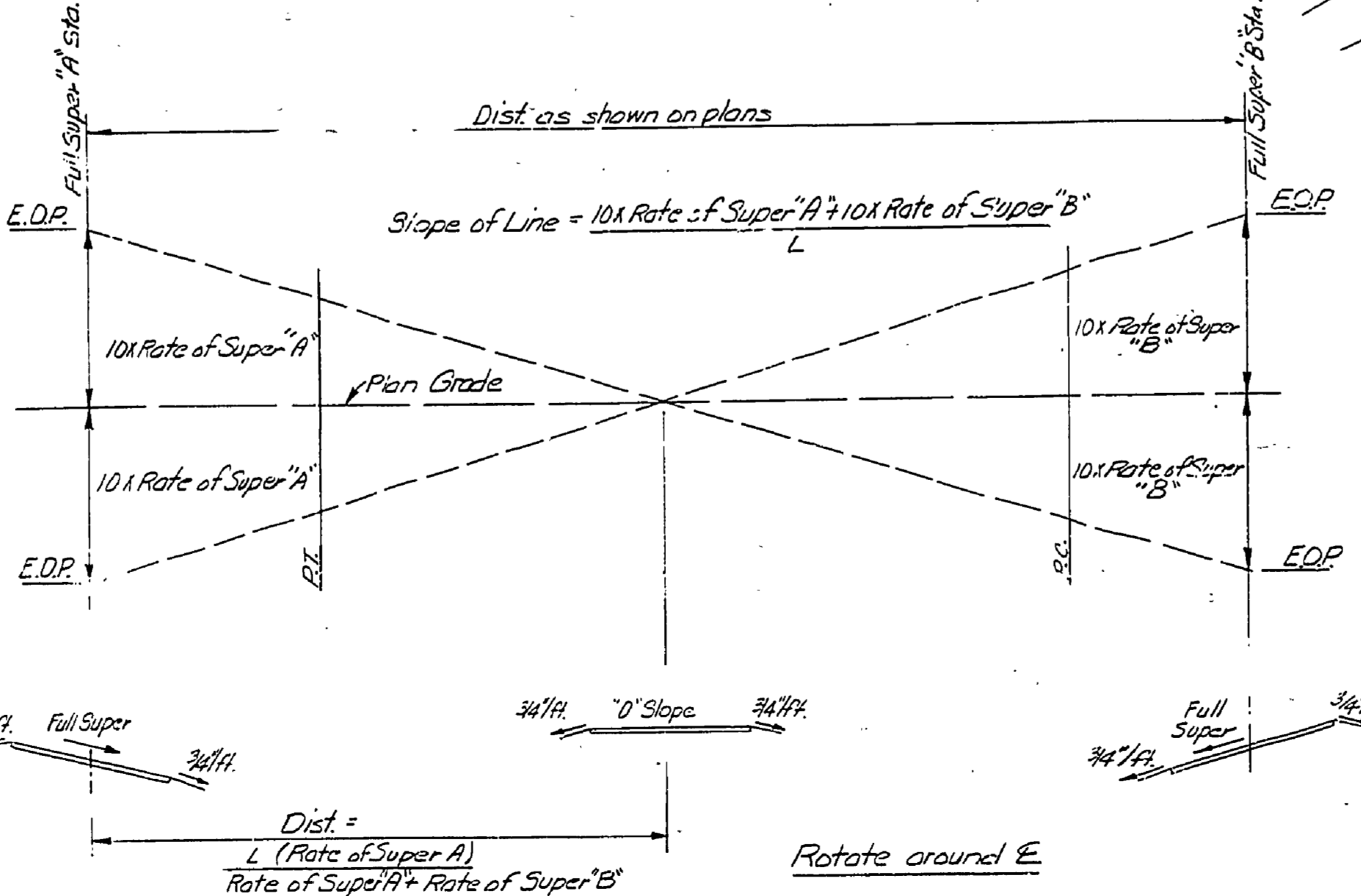
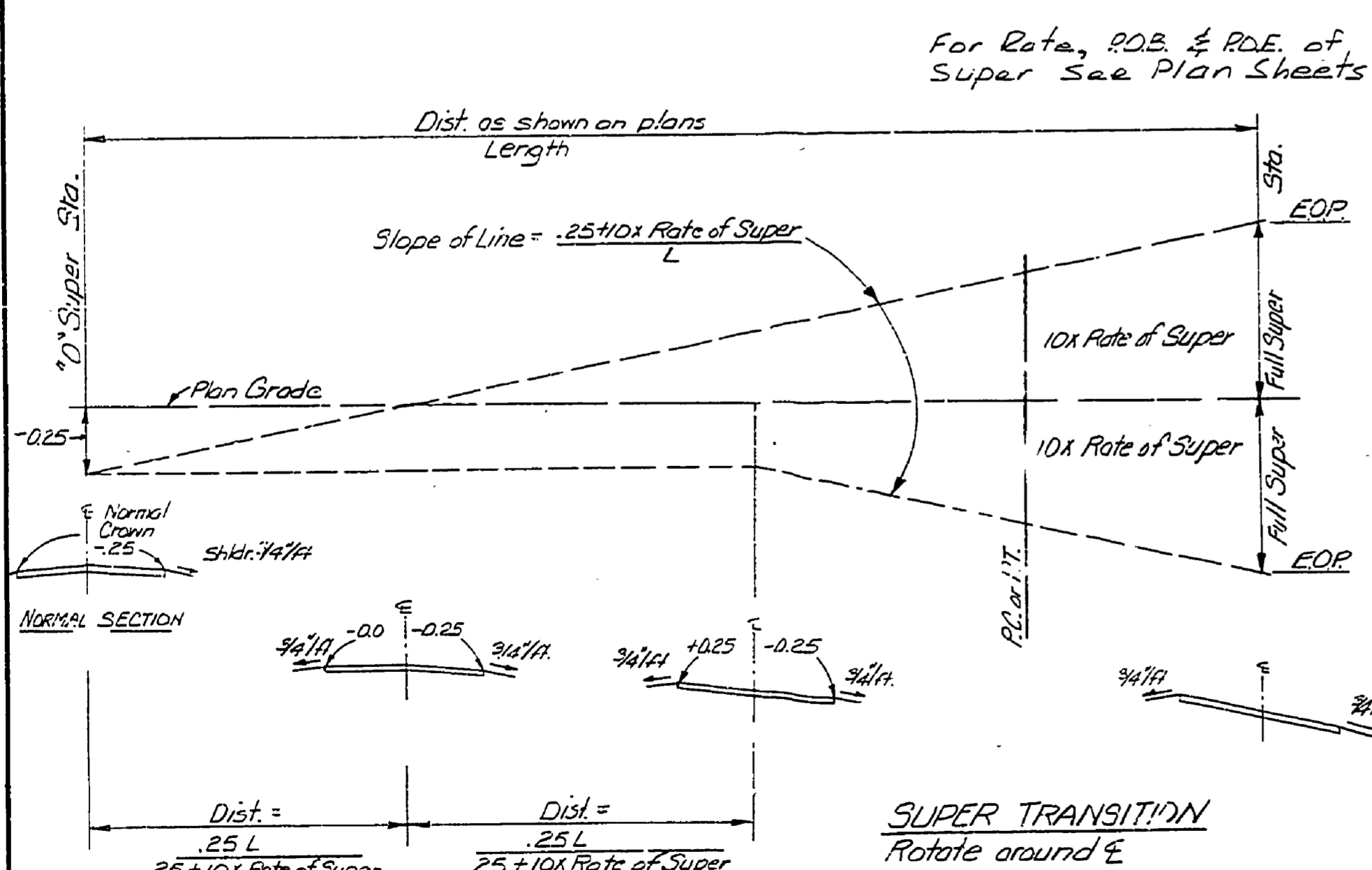
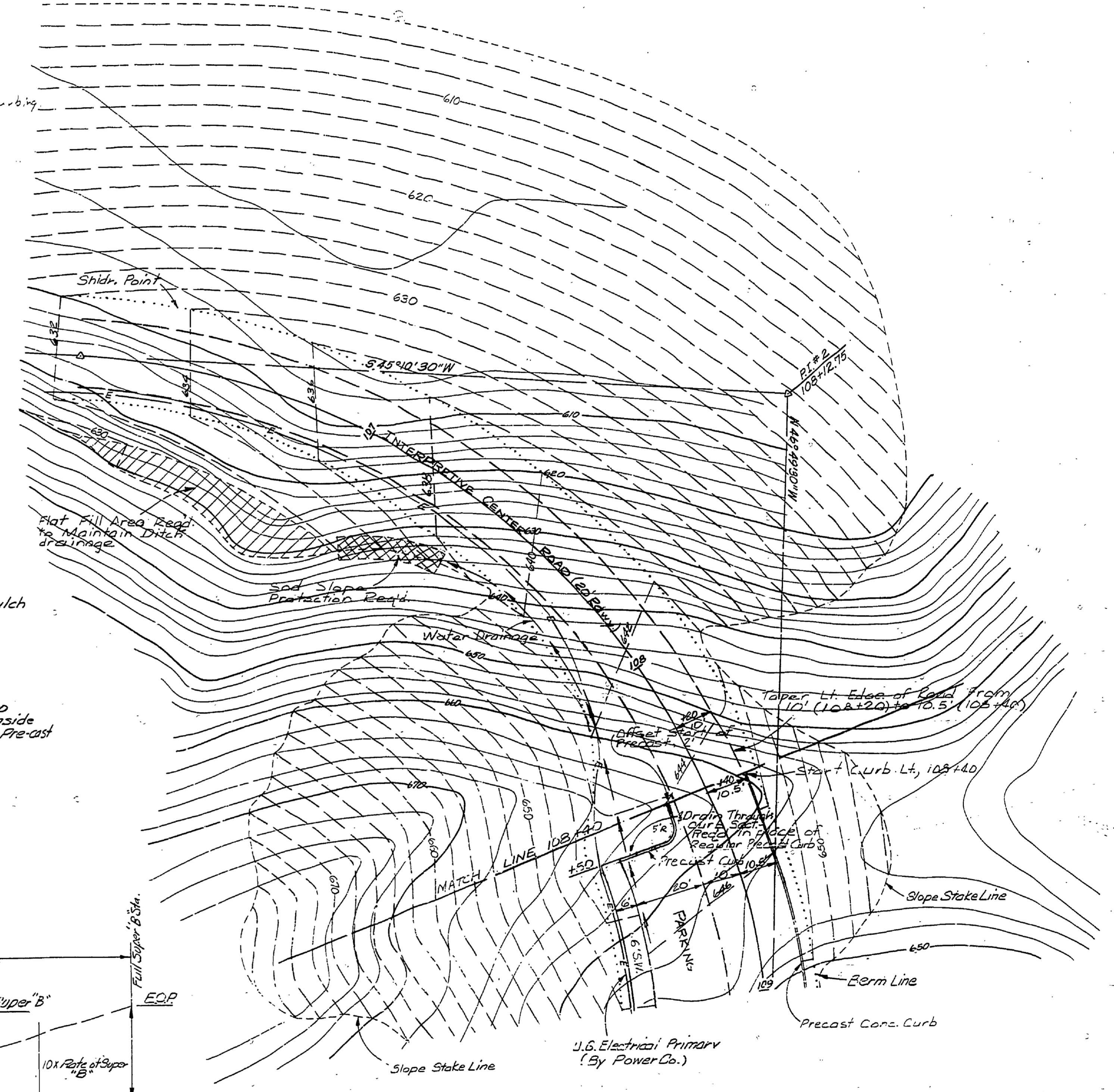
15' ROADWAY W/ WOOD CHIP PATH



15' ROADWAY W/ 6" CONC. S.W.



6" CONC. SIDEWALK
Detail "A"



SURVEYED BY D. BISSELL		12-69		DRAWN BY C.E. MASSEY		1-70		NO. DATE BY REVISIONS		MICHIGAN DEPARTMENT OF NATURAL RESOURCES		AREA OR PARK P.J. HOFFMASTER S.P.		PROJECT NO. 1065	
DESIGNED BY J. NELSON		1-70		CHECKED BY		DATE		NO. DATE BY REVISIONS		PARKING AREA & BUILDING SITE SHEET TITLE		SOUTH CAMPGROUND EXTENSION, PROJECT DAY USE & INTER. CENTER		SHEET 22 OF 24 PLAN NO. E-105	