

BM 134 El. 64.972
 Witness to P11113+59.86
 3/4" Pipe
 9" Beam, 16' Lt. of O.R.B.
 Baseline C-B-D Inter.
 Center Rd.

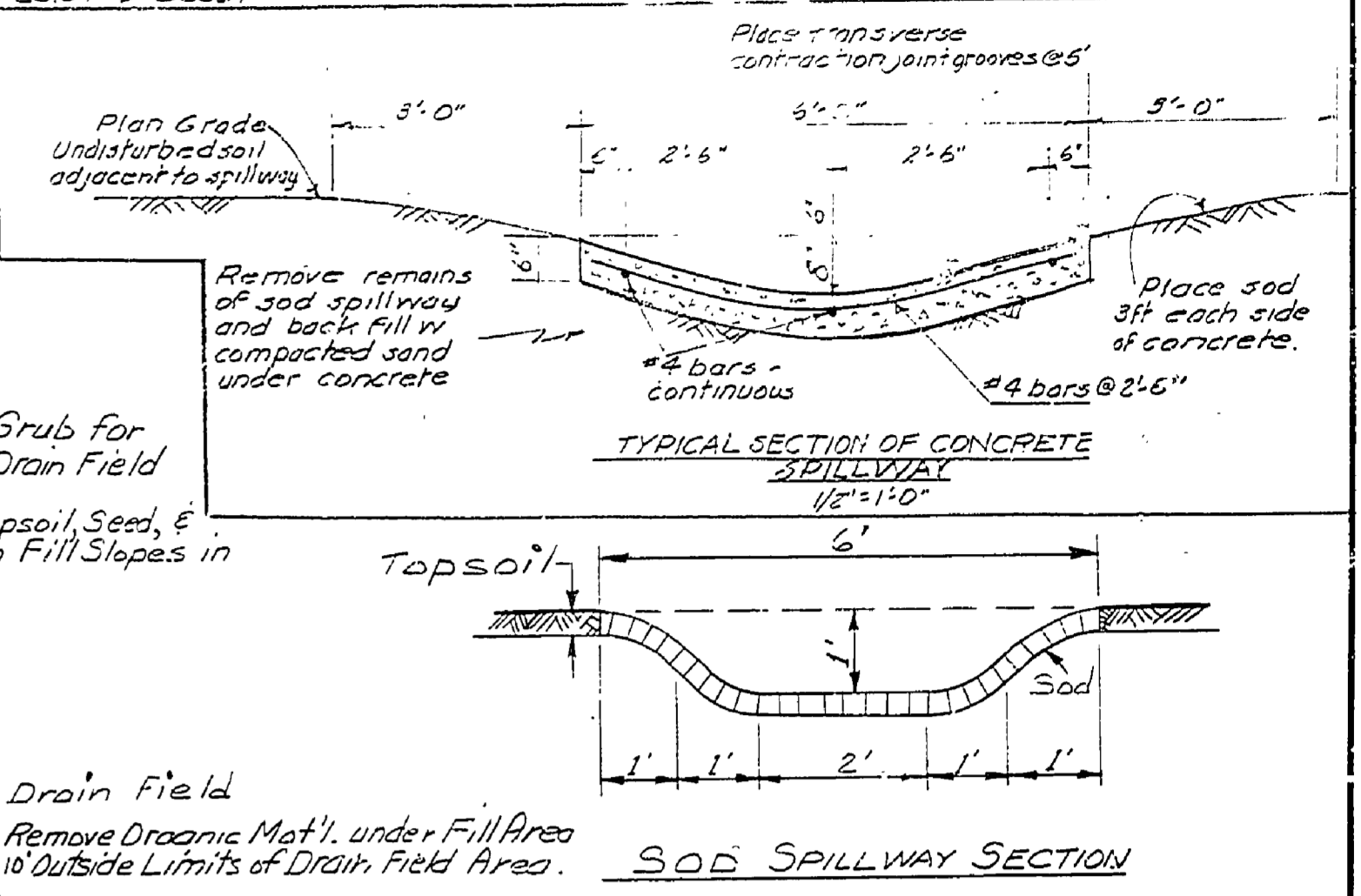
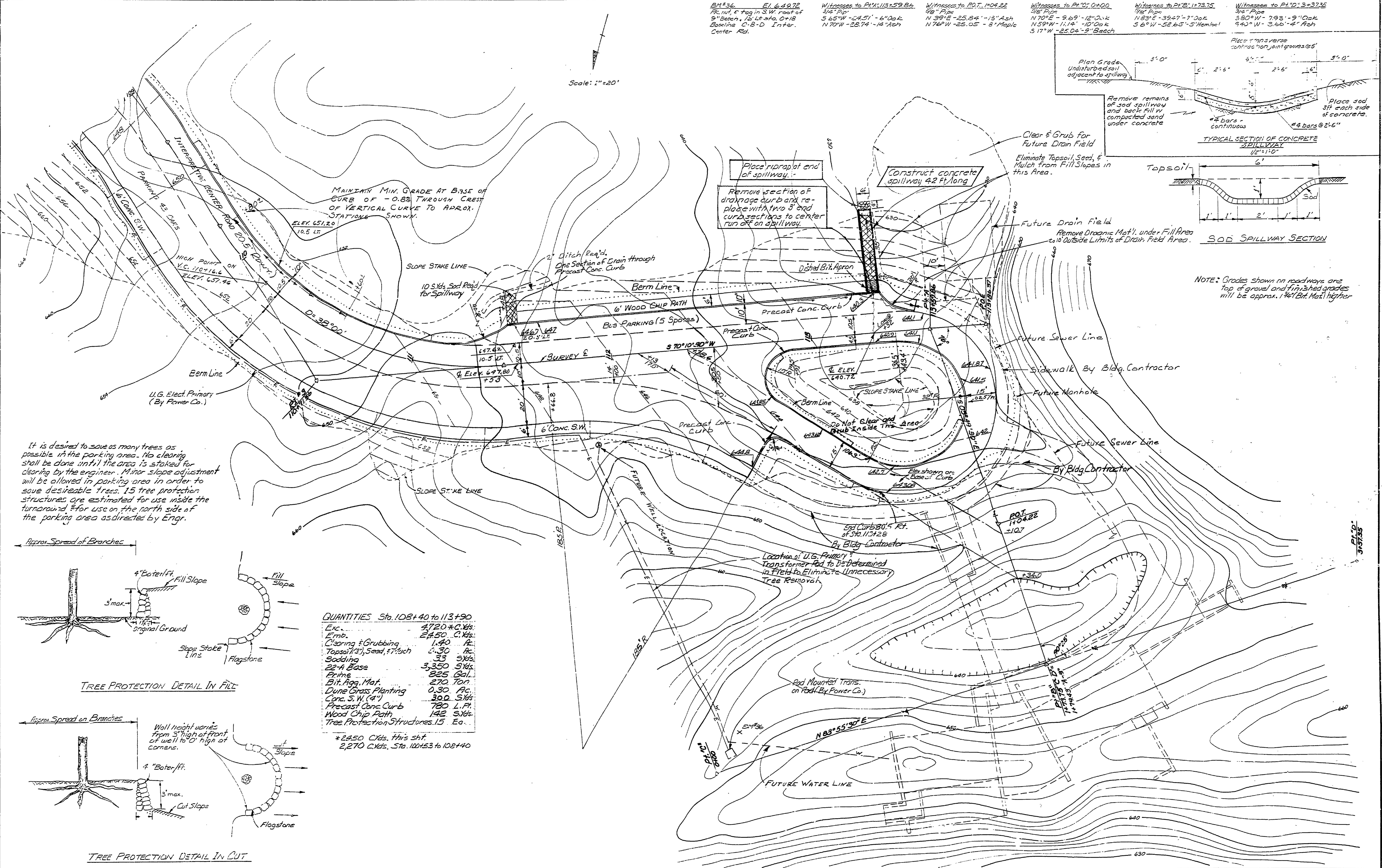
Witness to P.O.T. 1404.22
 4" Pipe
 N 39°E - 25.84' - 13" Ash
 N 76°W - 25.05' - 8" Maple

Witness to P1101.0400
 3/4" Pipe
 N 70°E - 9.69' - 12" Oak
 N 59°W - 11.14' - 10" Oak
 S 17°W - 25.04' - 9" Beech

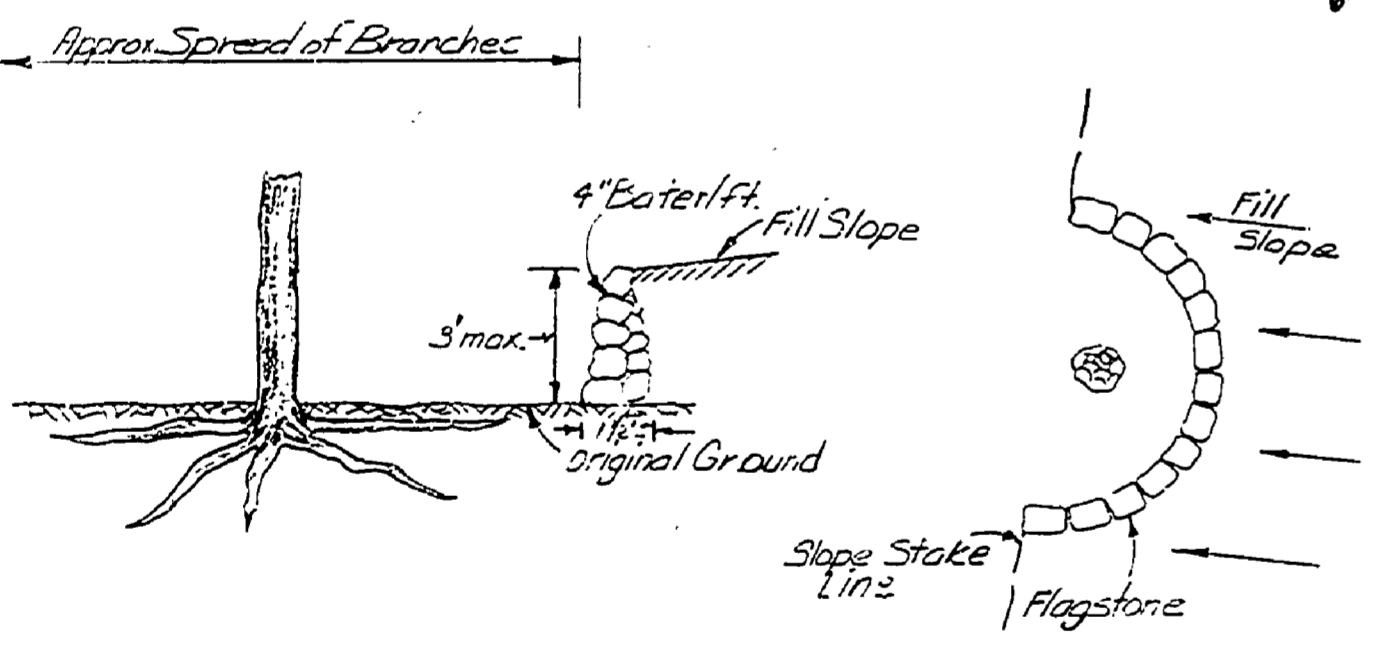
Witness to P1101.7375
 3/4" Pipe
 N 83°E - 39.47' - 7" Oak
 S 6°W - 52.65' - 5" Hemlock

Witness to P1101.3+3735
 3/4" Pipe
 S 80°W - 7.93' - 9" Oak
 S 43°W - 3.66' - 4" Ash

Scale: 1"=20'



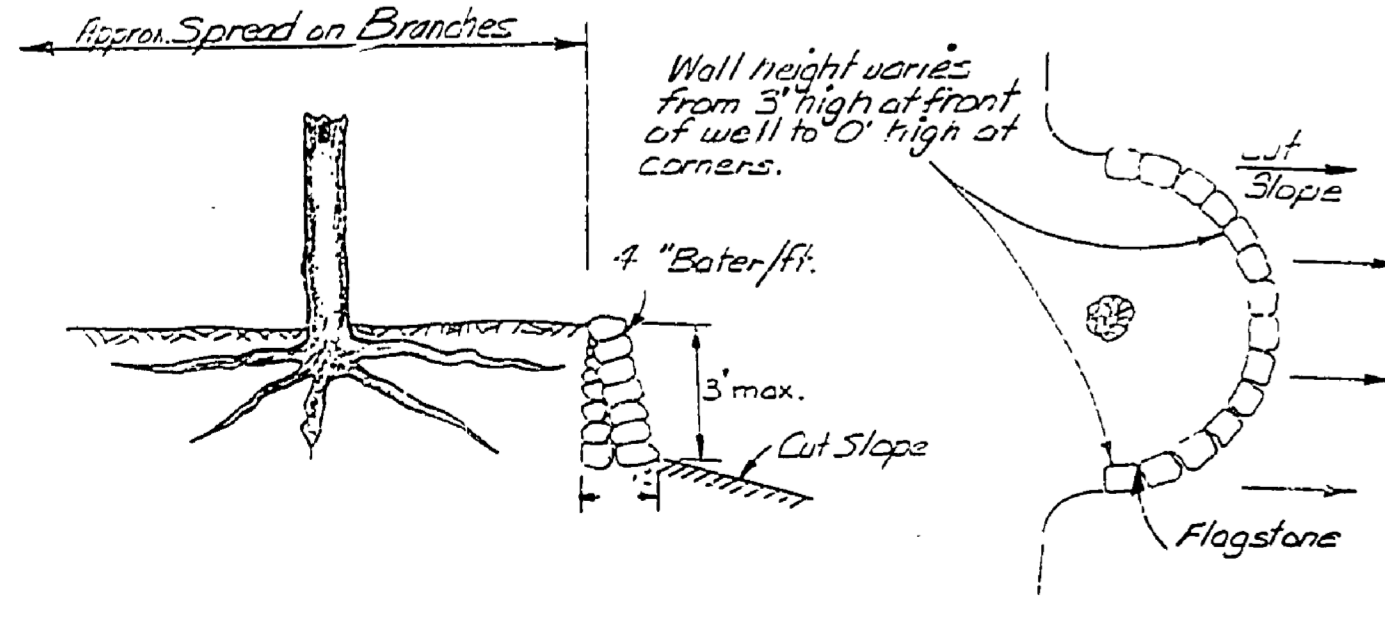
It is desired to save as many trees as possible in the parking area. No clearing shall be done until the area is staked for clearing by the engineer. Minor slope adjustment will be allowed in parking area in order to save desirable trees. 15 tree protection structures are estimated for use inside the turnaround & for use on the north side of the parking area as directed by Engr.



QUANTITIES Sta. 108+40 to 113+90

Exc.	4,720 C.Ys.
Emb.	2,450 C.Ys.
Clearing & Grubbing	1.40 Ac.
Topsoil (2") Seed, 7" thick	6.30 Ac.
Sodding	35 S.Ys.
22-A Base	3,350 S.Ys.
Prime	825 Gal.
Bit. Agg. Mat.	270 Ton.
Dune Grass Planting	0.30 Ac.
Conc. S.W. (4")	300 S.Ys.
Precast Conc. Curb	780 L.Ft.
Wood Chip Path	142 S.Ys.
Tree Protection Structures	15 Ea.

*2,450 C.Ys. this sht.
 2,270 C.Ys. Sta. 108+53 to 108+40



NOTE: Grades shown on roadways are top of gravel and finished grades will be approx. 1 1/4" (Bit. Mat.) higher

SURVEYED BY D. BISSELL	12-69	DRAWN BY C.E. MASSEY	12-69	NO. DATE BY REVISIONS	NO. DATE BY REVISIONS	MICHIGAN DEPARTMENT OF NATURAL RESOURCES	PARKING AREA & BUILDING SITE	AREA OR PARK P.J. HOFFMASTER S.P.	PROJECT NO. (1065) 24-1318
DESIGNED BY J. NELSON	12-69	CHECKED BY	DATE	1. 3-72 WJK Concrete drainage spillway.	3.	SOUTH CAMPGROUND EXTENSION, PROJECT DAY USE & INTER. CENTER	SHEET 23 OF 24	PLAN NO. E-105	