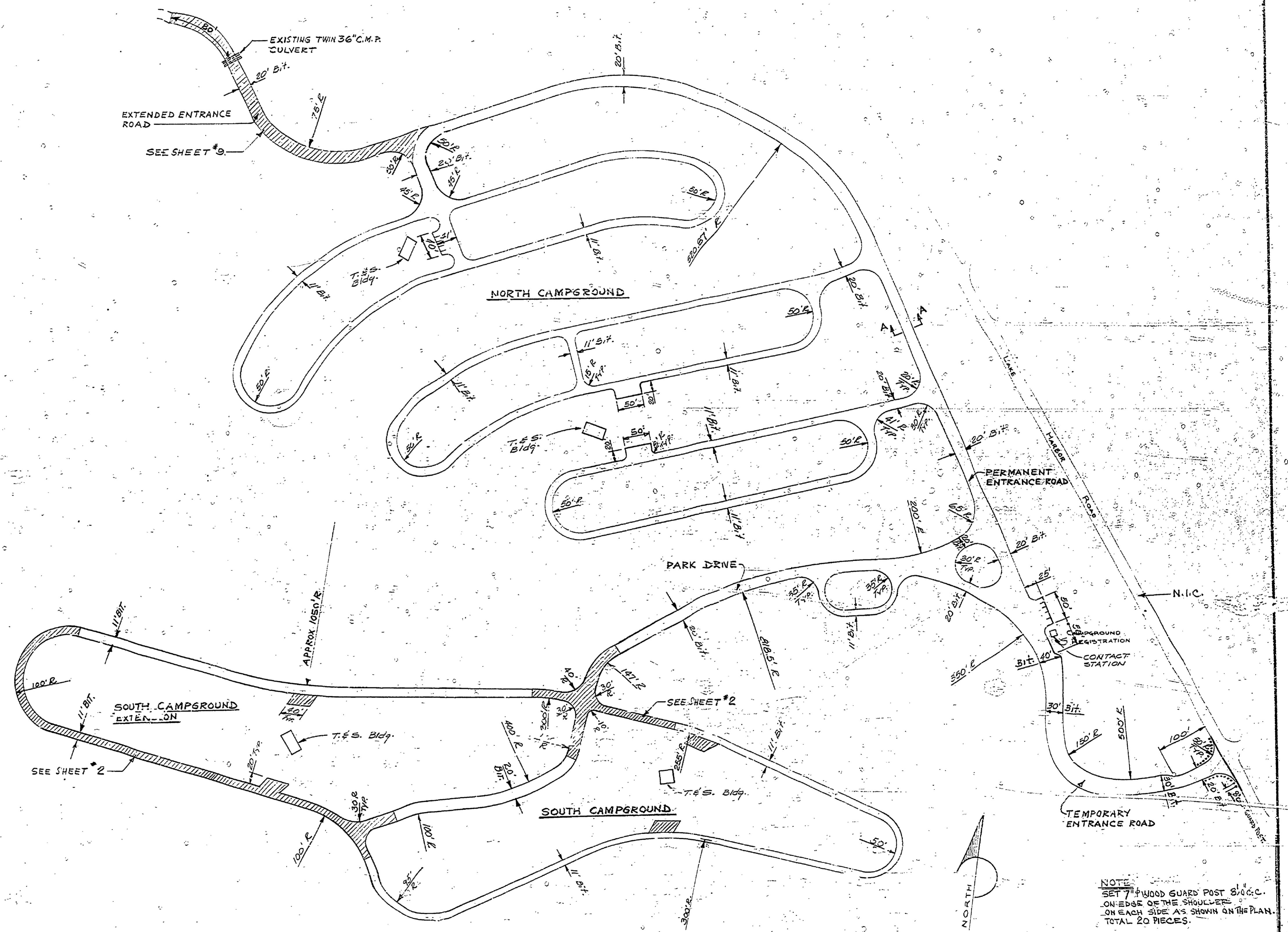


QUANTITIES THIS SHEET

BITUMINOUS AGGREGATE APPLIED, 4.11
 BITUMINOUS PRIME COAT APPLIED,
 CONDITIONING AGGREGATE SURFACE
 CONDITIONING AGGREGATE 22-A

2400 TONS
 7333 GALLONS
 23,000 SQ. YDS.
 50 TONS



NOTE

AREAS NOT PAID FOR AS
 CONDITIONING AGGREGATE SURFACE.

SHOULDERS ARE TO BE GRADED
 SO AS TO MEET THE TOP OF THE
 BITUMINOUS PAVING.

AREAS PAID FOR AS
 CONDITIONING AGGREGATE SURFACE.
 ROADWAY SLOPES TO BE DETERMINED
 BY ENGINEER IN FIELD TO INSURE POSITIVE SURFACE DRAINAGE.

NOTE
 SET 7" WOOD GUARD POST 3' O.C.
 ON EDGE OF THE SHOULDERS
 ON EACH SIDE AS SHOWN ON THE PLAN.
 TOTAL 20 PIECES.

SURVEYED BY A.V. McCann & D. Biswell		DRAWN BY R.J. Stefanick		2-68		NO. DATE BY		REVISIONS		NO. DATE BY		REVISIONS		MICHIGAN DEPARTMENT OF CONSERVATION		CAMPING AREA BITUMINOUS SURFACING.		SHEET NO. OF		FOR PROJECT NO. 1065		P.J. HOFFMASTER STATE PARK CAMPGROUND DEVELOPMENT	
DESIGNED BY		CHECKED BY		DATE		1.				3.								24 OF 24		PLAN NO. E-105			
						2.				4.													