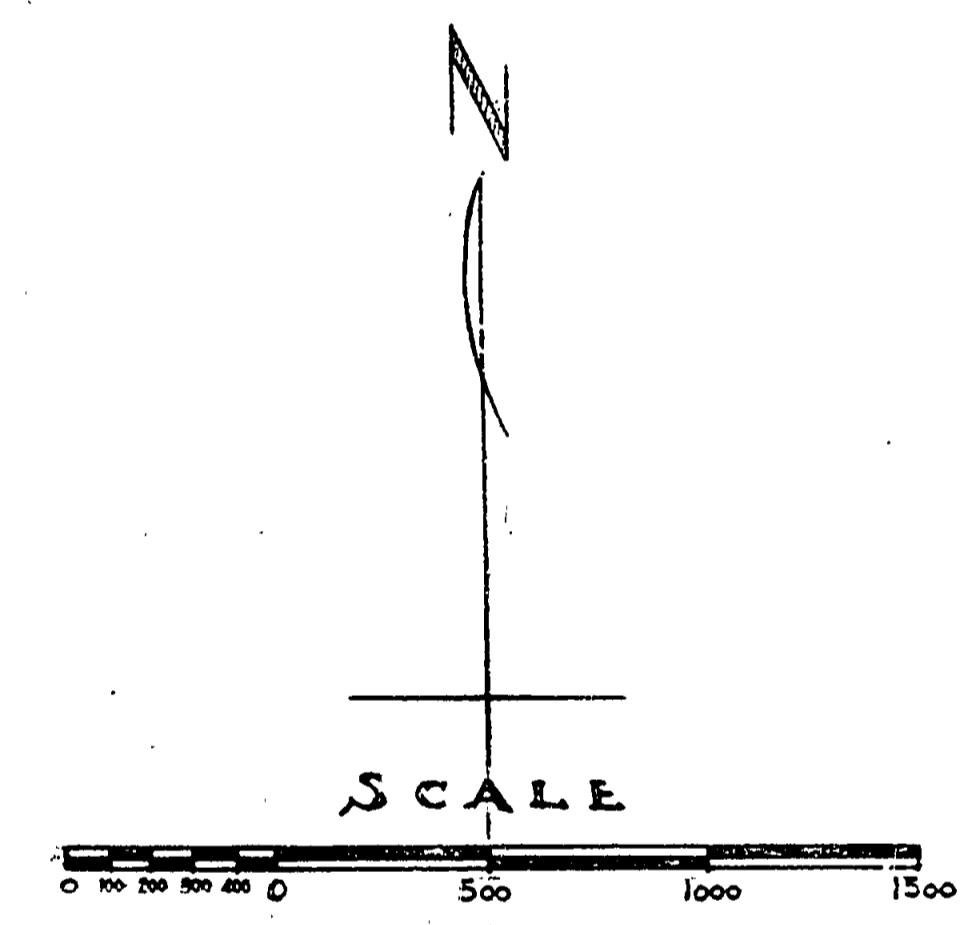
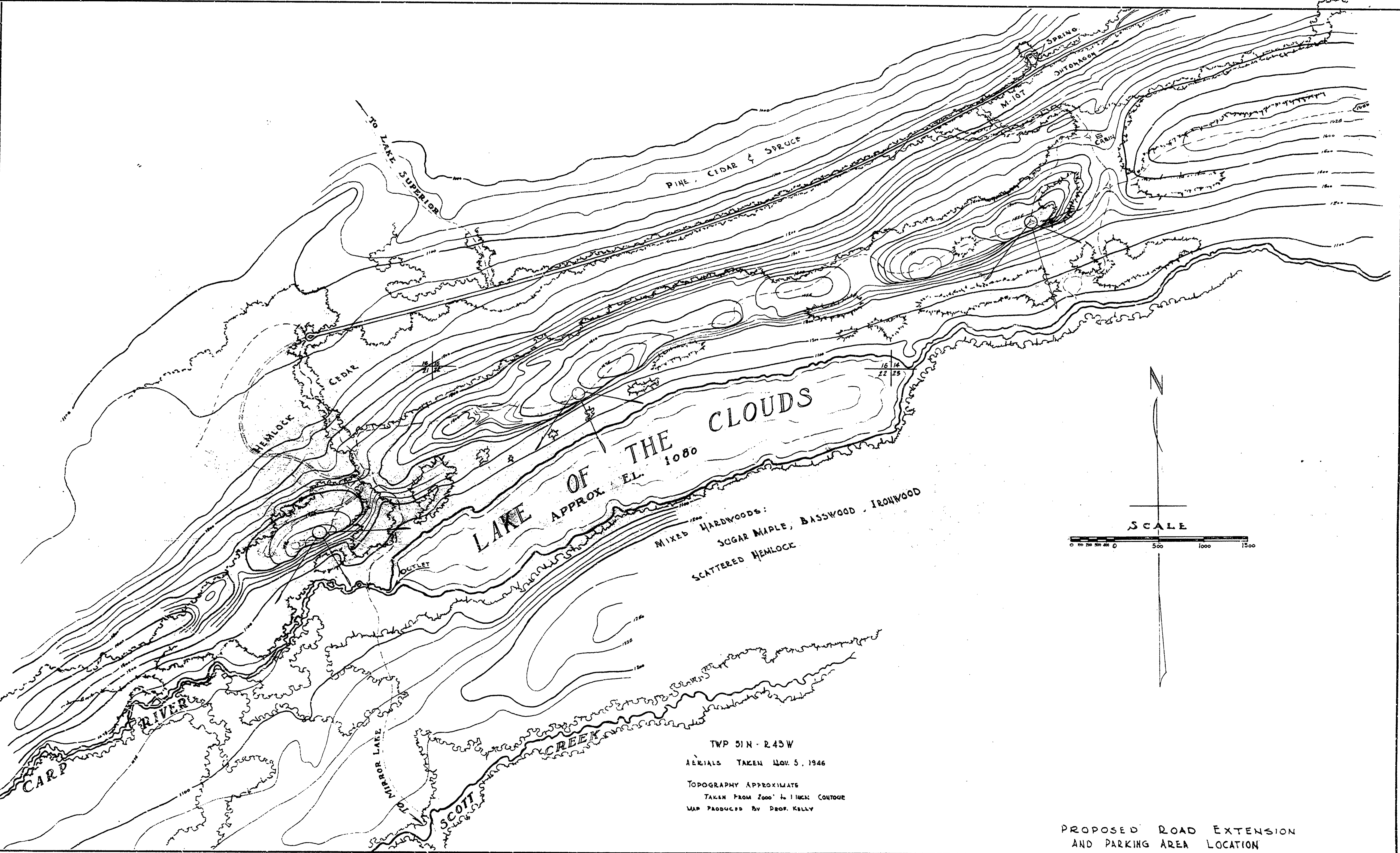


DRAWN BY: M.F.C. & D.W.M.	REVIEWED BY SECTIONS		APPROVED BY		NO. DATE BY		REVISIONS	
	ARCHITECTURAL	ENGINEERING	LANDSCAPE	DATE	DATE	DATE	DATE	DATE
CHECKED BY: L.E.L.			ASSISTANT CHIEF IN CHARGE		1	2	3	4
DATE: MAR 1947			OF DESIGN DATE					5
								6



TWP 51N - R43W
 AERIALS TAKEN NOV. 5, 1946
 TOPOGRAPHY APPROXIMATE
 TAKEN FROM 2000' to 1000' CONTOUR
 MAP PRODUCED BY PROF. KELLY

PROPOSED ROAD EXTENSION
 AND PARKING AREA LOCATION

MICHIGAN
 DEPARTMENT OF CONSERVATION
 STATE PARKS DIVISION

PORCUPINE MTS. STATE PARK
 LAKE OF THE CLOUDS AREA
 SCALE 1" = 528'

SHEET
 NO. 1
 OF 1

PLAN NO.
 L-103