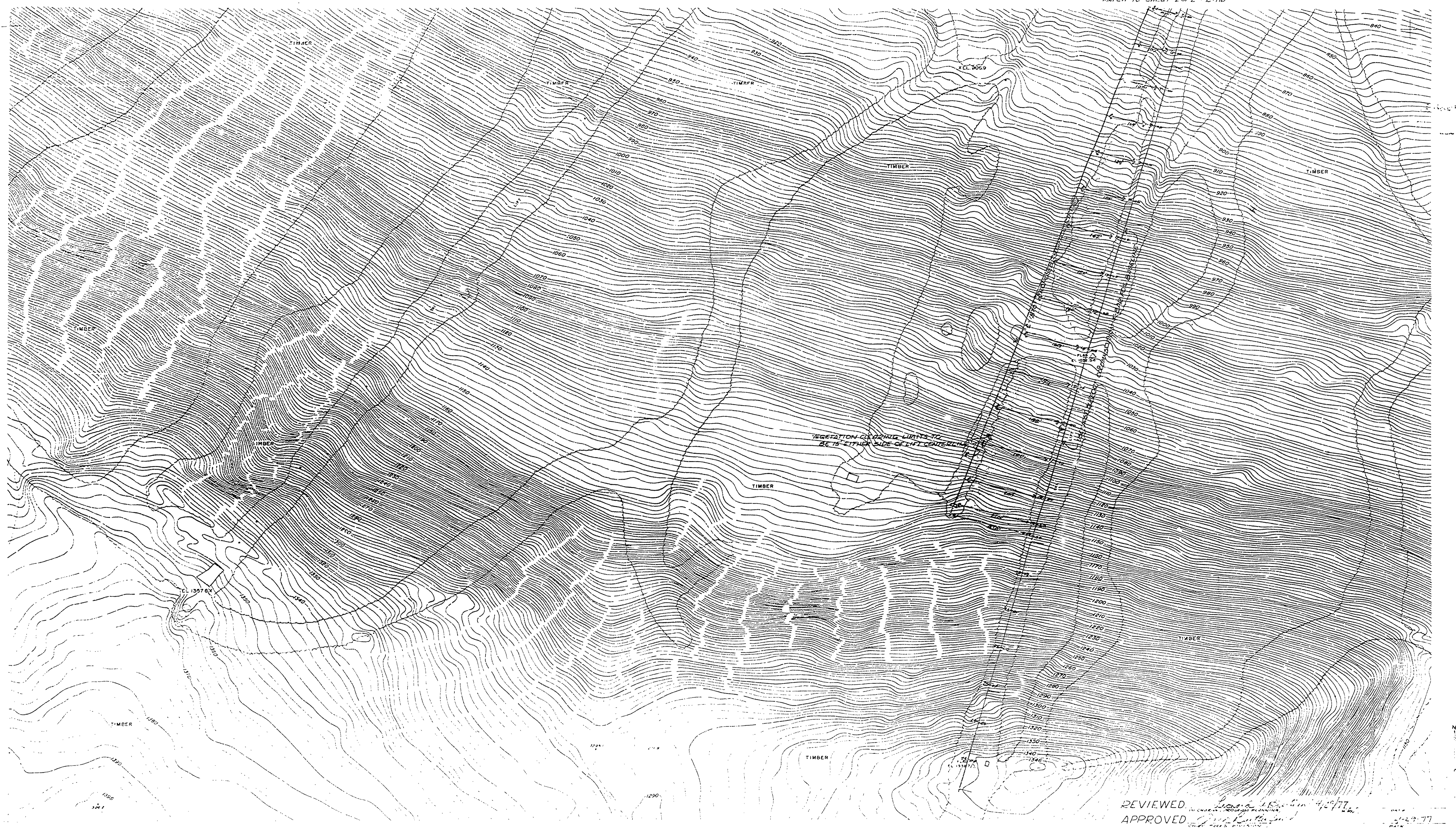


MATCH TO SHEET 20F2 - L-116



REVIEWED *[Signature]* 4/27/77
 APPROVED *[Signature]* 5/29/77

DESIGNED BY *[Signature]* 4/11/77
 DRAWN BY *[Signature]* 7/31/77

SURFACE LIFT LAYOUT

MICHIGAN
 DEPARTMENT OF NATURAL RESOURCES
 PARKS DIVISION

PORCUPINE MOUNTAINS
 WILDERNESS STATE PARK
 SCALE 1"=100'
 CONTOUR INTERVAL 2'

SHEET NO. 1
 OF 2
 PLAN NO. L-118