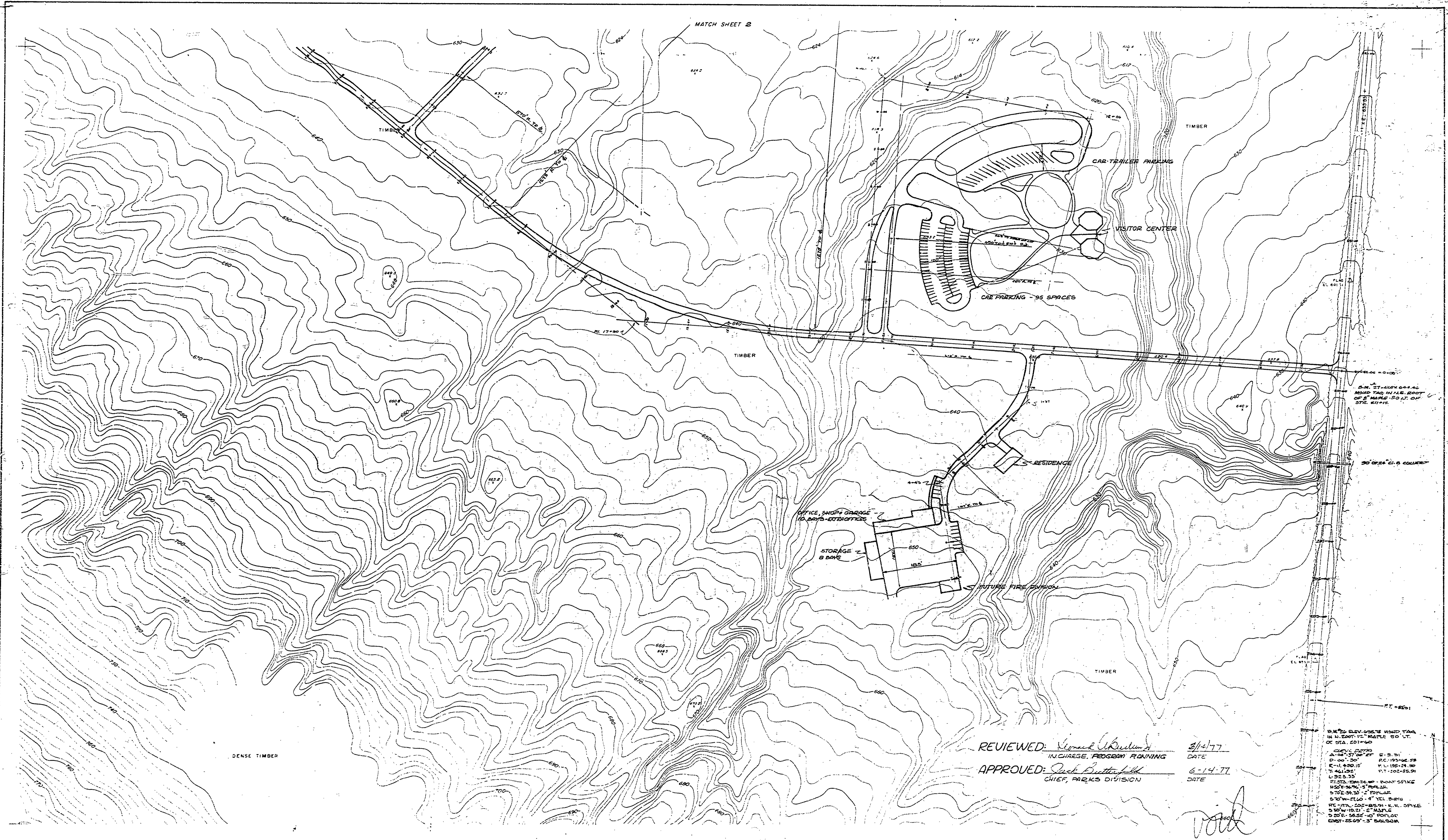


MATCH SHEET 2



REVIEWED: *Kenneth A. Buel* 5/14/77
 IN CHARGE, PROGRAM PLANNING DATE

APPROVED: *Jack Butterfield* 6-14-77
 CHIEF, PARKS DIVISION DATE

8. M. 25' ELEV. 60' 1/2" MARKED T.O.M. IN N. EAST 1/2" MAPLE 60' LT. OF STA. 201+50

8. M. 25' ELEV. 60' 1/2" MARKED T.O.M. IN N. EAST 1/2" MAPLE 60' LT. OF STA. 201+50

8. M. 25' ELEV. 60' 1/2" MARKED T.O.M. IN N. EAST 1/2" MAPLE 60' LT. OF STA. 201+50

8. M. 25' ELEV. 60' 1/2" MARKED T.O.M. IN N. EAST 1/2" MAPLE 60' LT. OF STA. 201+50

RELOCATION OF SERVICE AREA & M-107 - PROPOSED VISITOR CENTER

MICHIGAN DEPARTMENT OF NATURAL RESOURCES PARKS DIVISION

PORCUPINE MOUNTAINS WILDERNESS STATE PARK
 SCALE 1" = 100'
 CONTOUR INTERVAL 2'

SHEET NO. 1 OF 3
 PLAN NO. L-116
 R-29