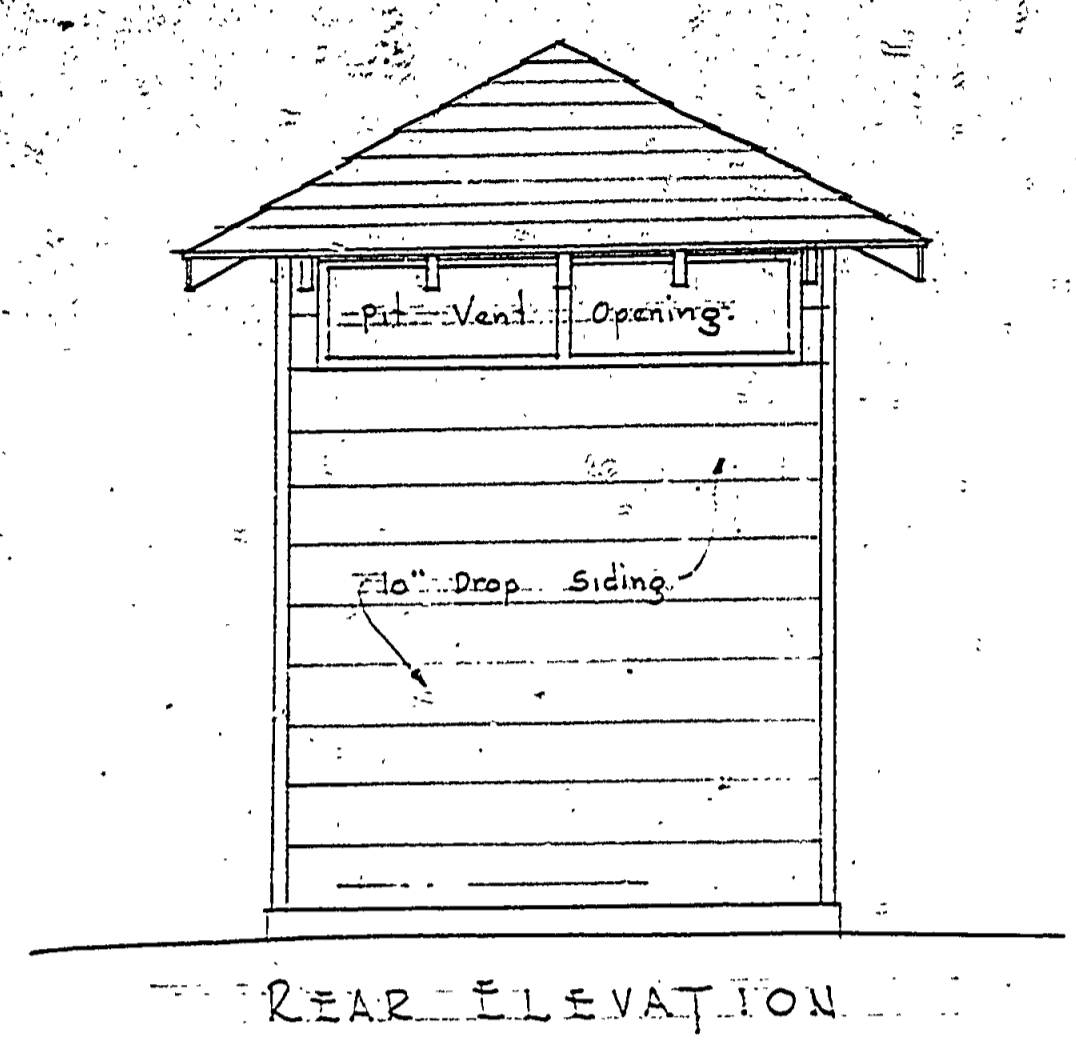


| NO. | DATE | BY | REVISIONS |
|-----|------|----|-----------|
| 1   |      |    |           |
| 2   |      |    |           |
| 3   |      |    |           |
| 4   |      |    |           |
| 5   |      |    |           |
| 6   |      |    |           |

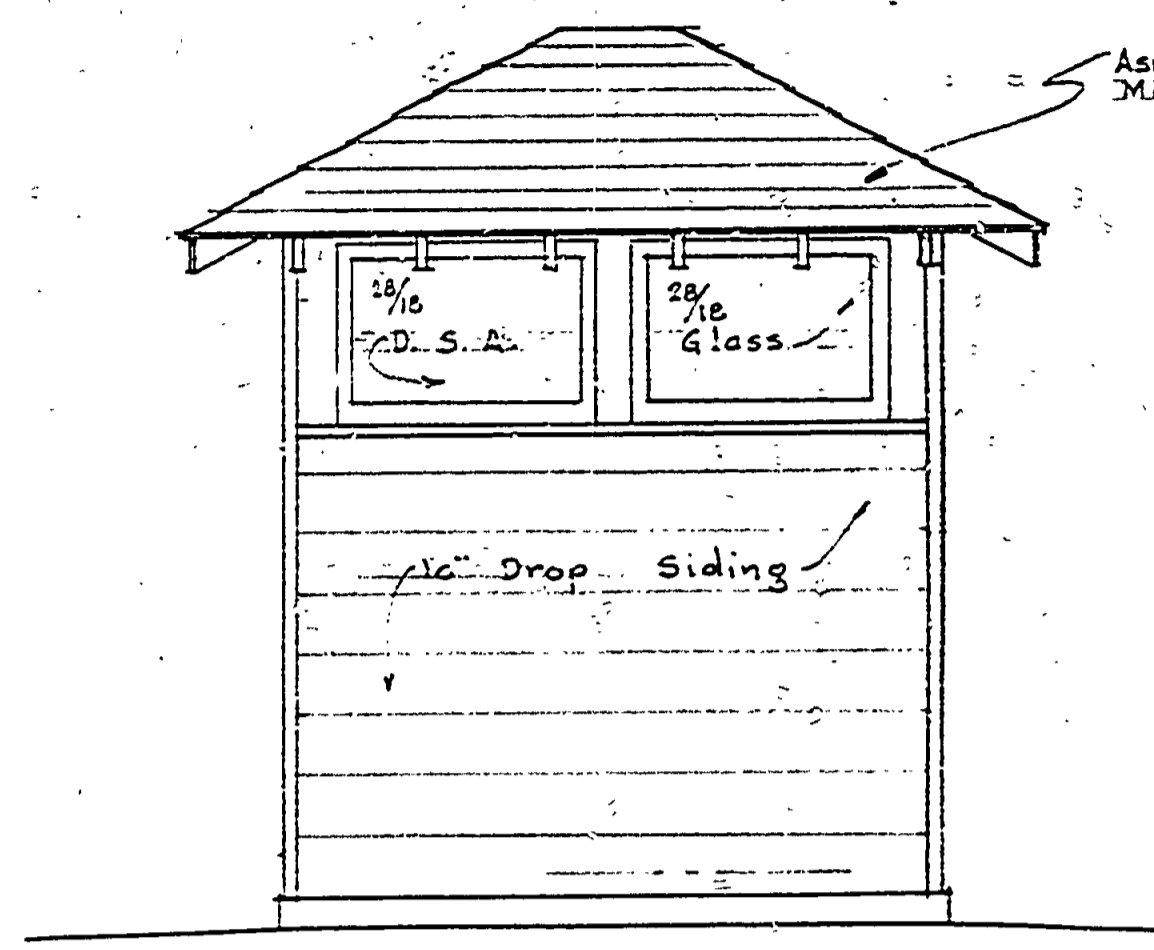
APPROVED BY  
*[Signature]*  
 ASSISTANT CHIEF IN CHARGE  
 OF DESIGN

REVIEWED BY SECTIONS  
 ARCHITECTURAL  
 ENGINEERING  
 LANDSCAPE

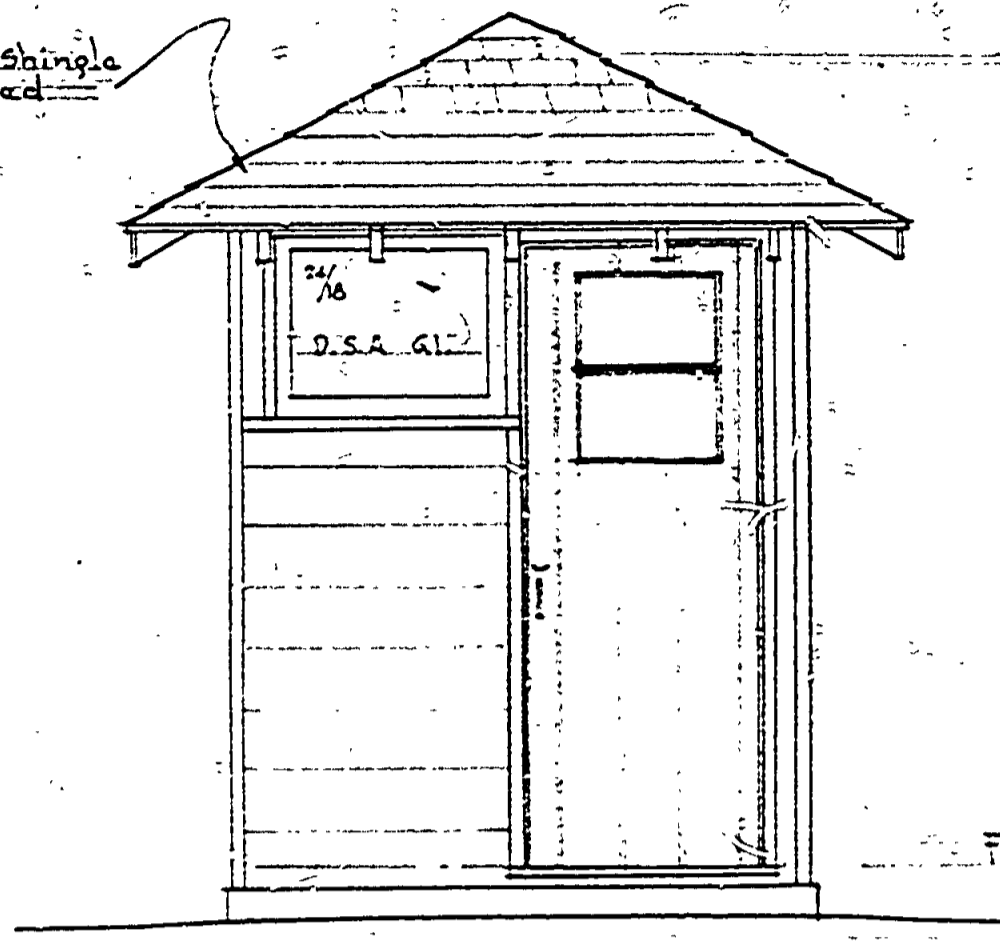
DRAWN BY  
 TRACED BY  
 CHECKED BY  
 DATE



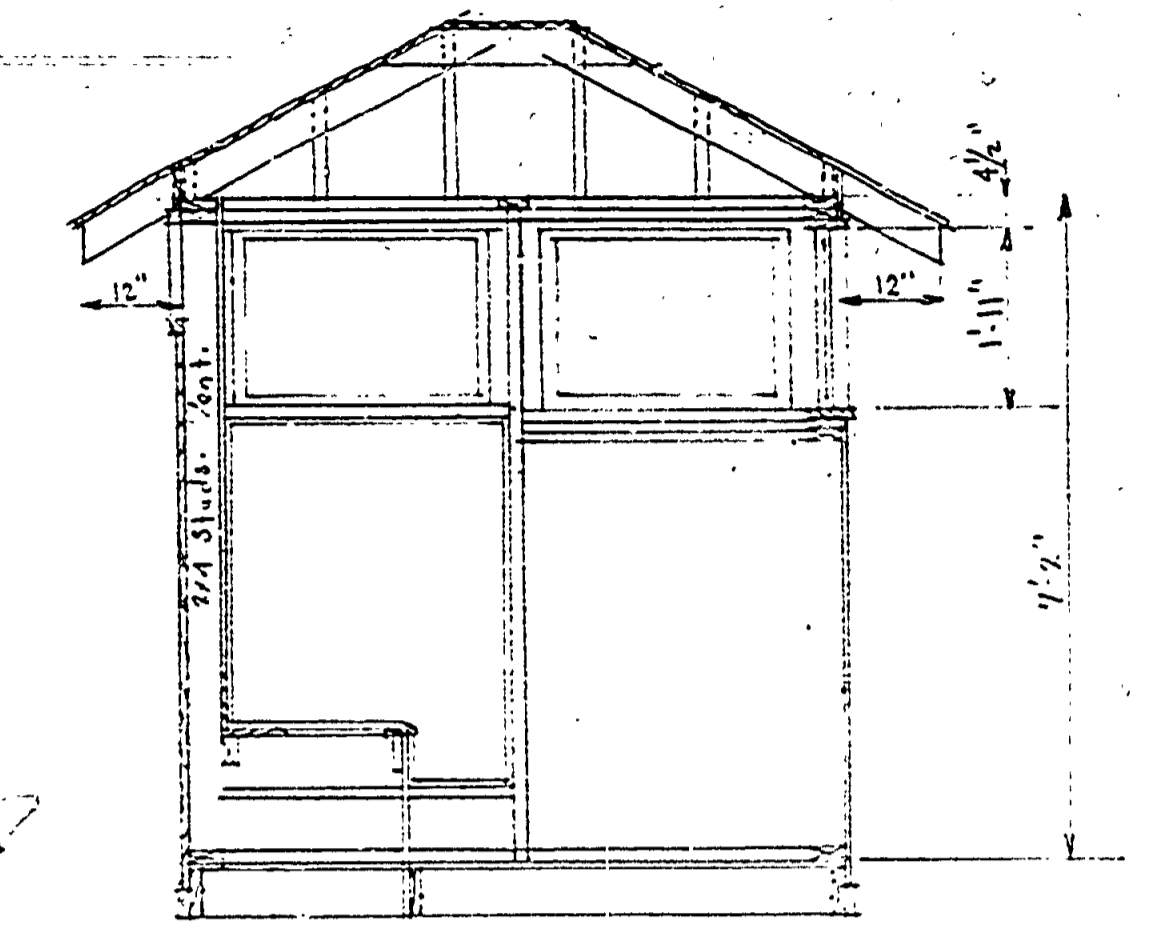
REAR ELEVATION



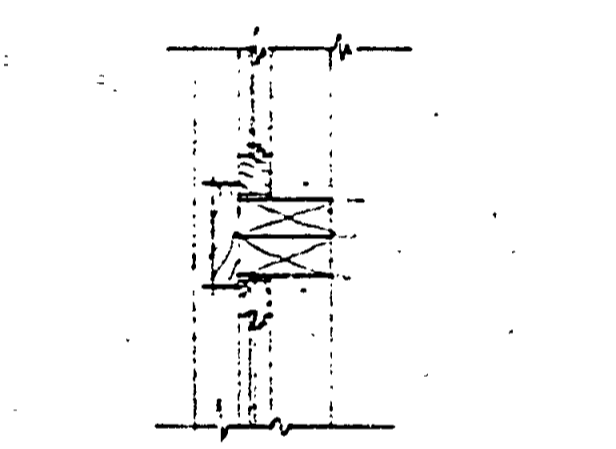
LEFT ELEVATION  
 RIGHT ELEVATION SIMILAR  
 scale 1/4" = 1'-0"



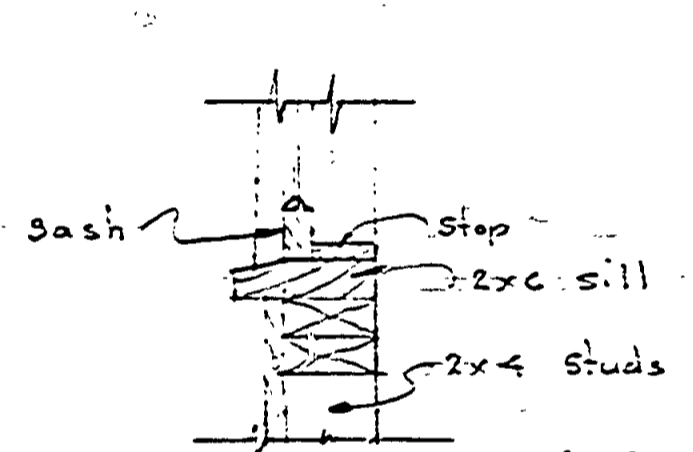
FRONT ELEVATION



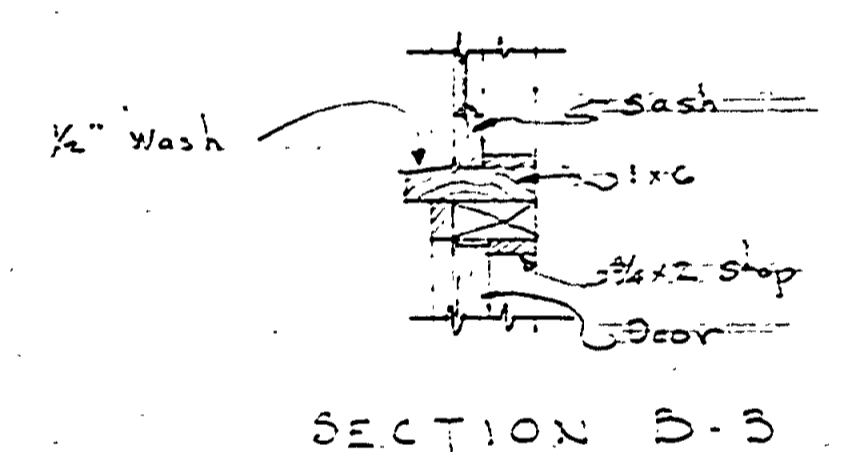
NOTE:- USE FLOOR PLAN (#SA107A) STD PIT TOILETS.  
 17 1/2 sq. ft. of Glass Area to 36.79 sq. ft. of Floor Area.



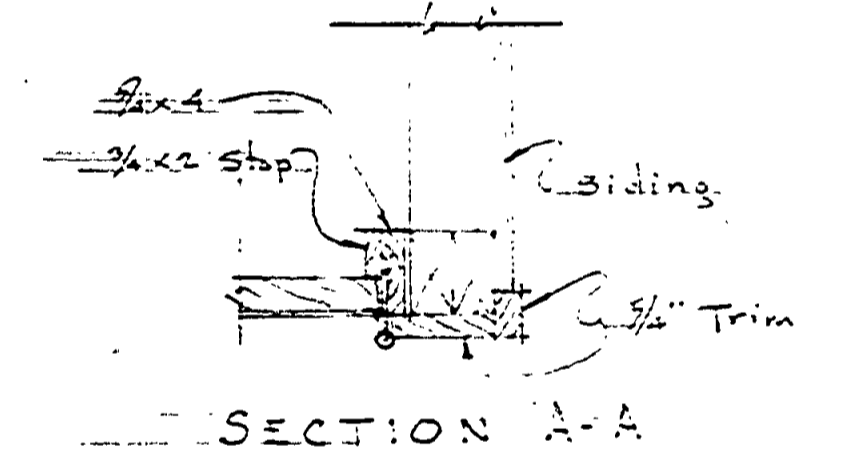
SECTION D-D



SECTION C-C

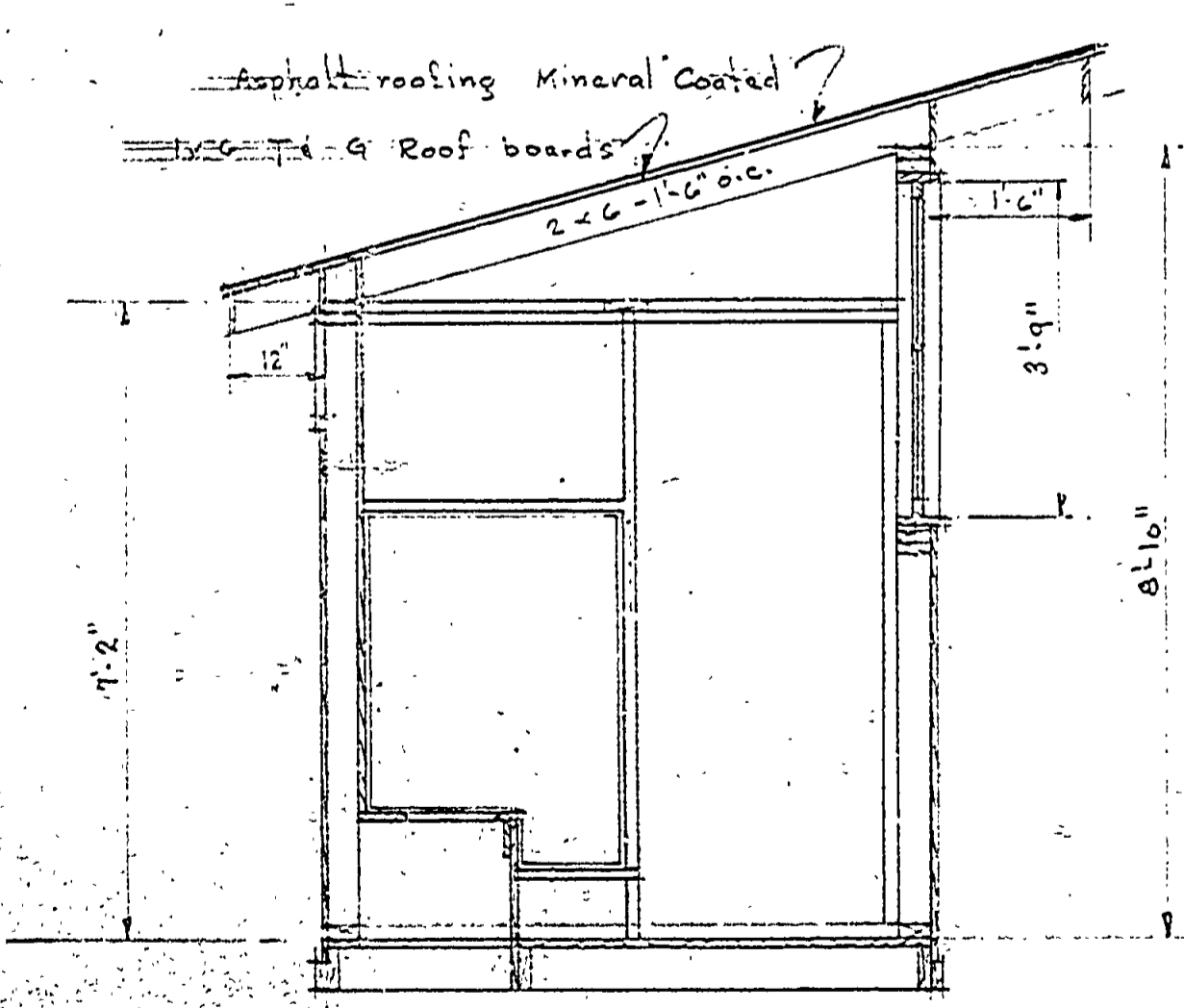


SECTION B-B

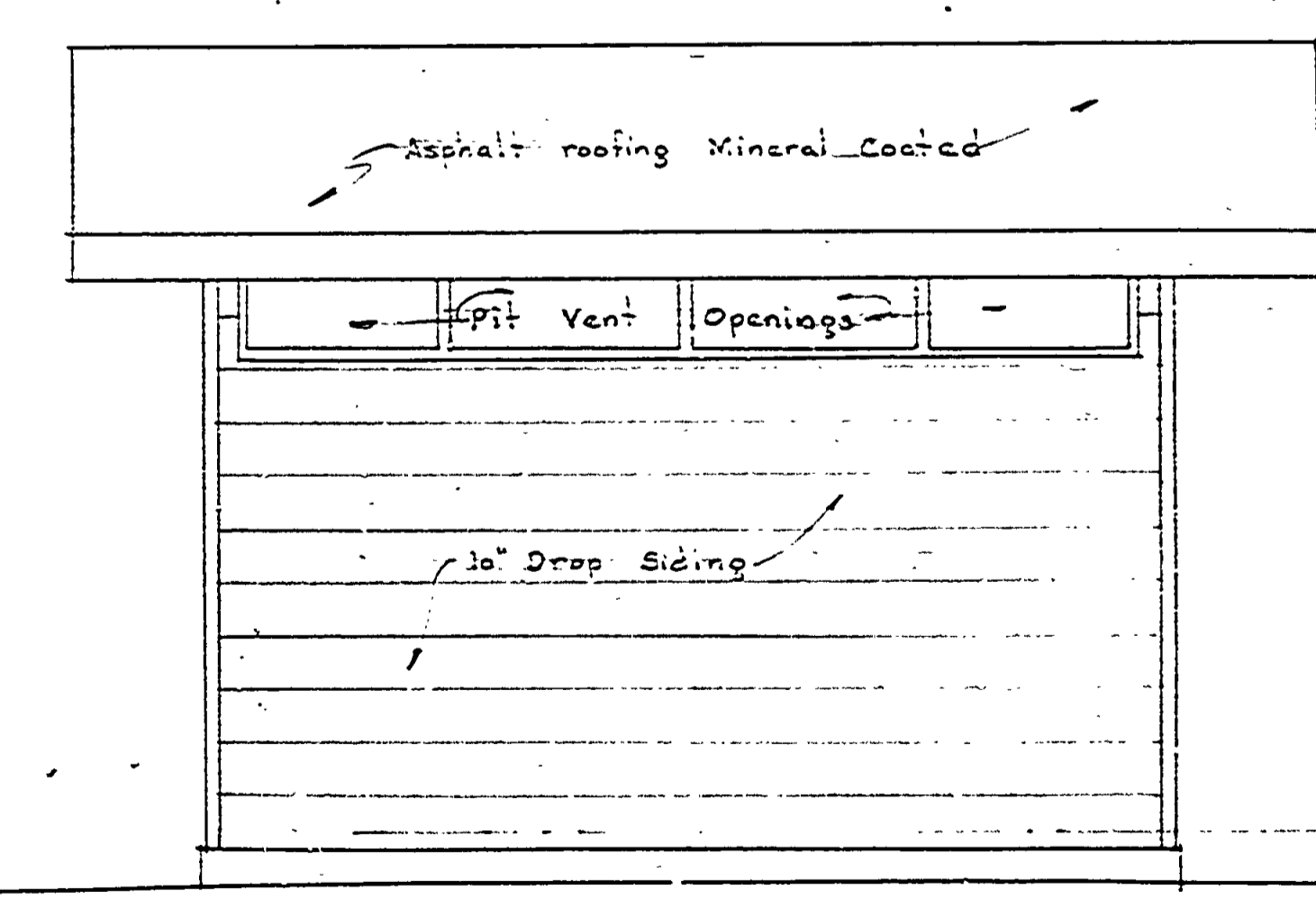


SECTION A-A

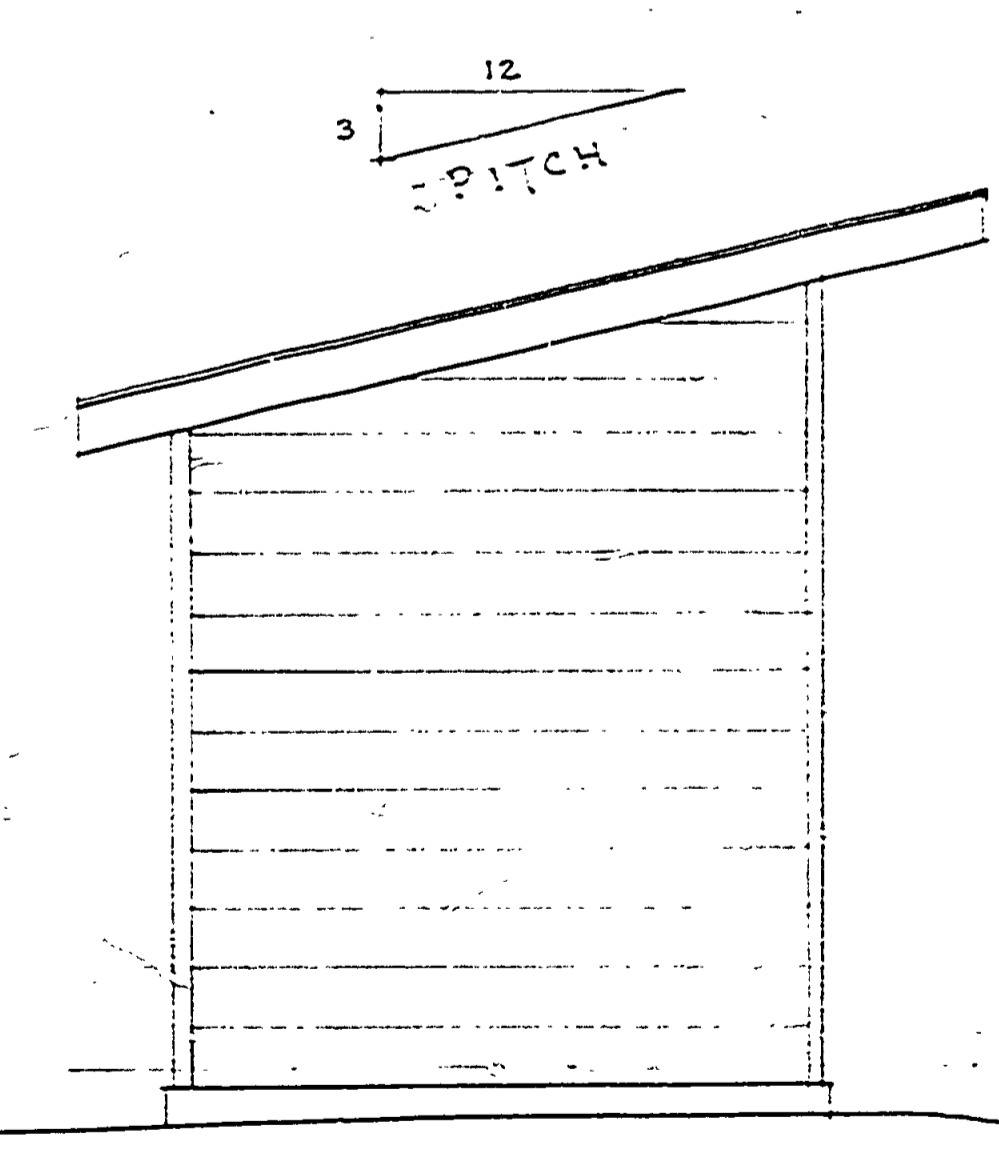
D = T A I L S  
 scale 1/4" = 1'-0"



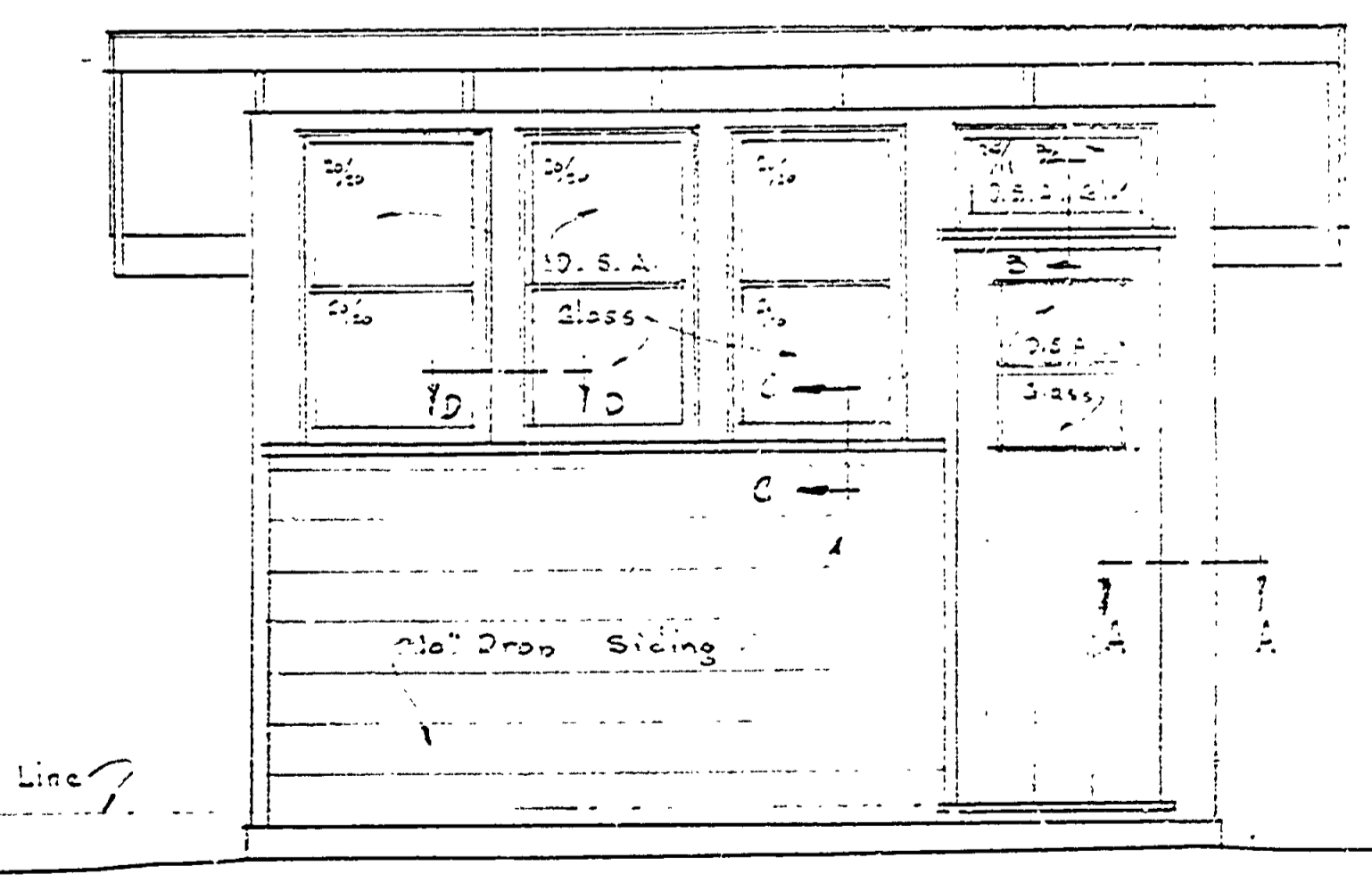
SECTION



REAR ELEVATION



LEFT ELEVATION  
 RIGHT ELEVATION SIMILAR  
 scale 1/4" = 1'-0"



FRONT ELEVATION

NOTE:- USE FLOOR PLAN (#SA103A) STD PIT TOILETS  
 18 1/2 sq. ft. of Glass Area to 46.9 sq. ft. of Floor Area.