

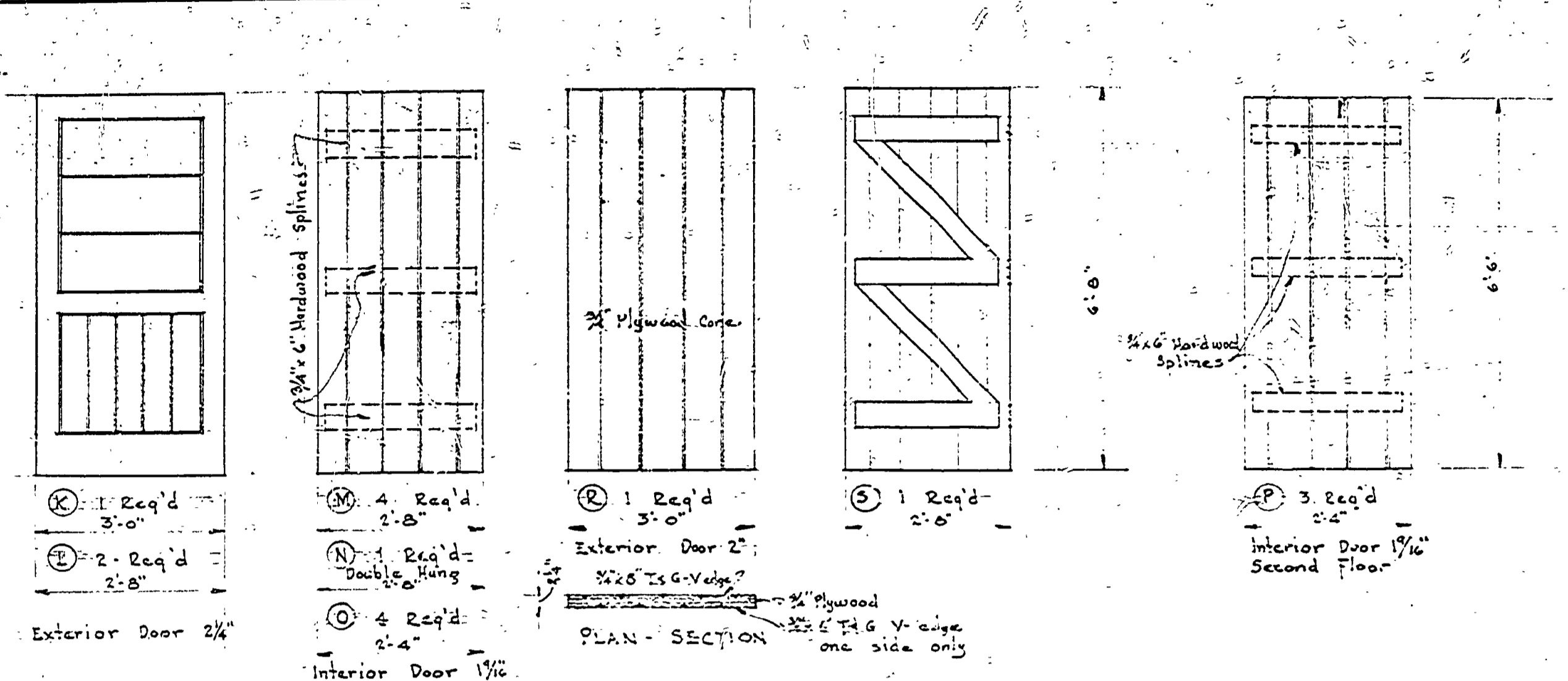
APPROVED BY	DATE	DATE	DATE
	9-14-50	9-14-50	9-14-50
	J.I.R.	J.I.R.	J.I.R.
REVIEWED BY SECTIONS	DATE	DATE	DATE
	9-14-50	9-14-50	9-14-50
	J.I.R.	J.I.R.	J.I.R.
REVISIONS	DATE	DATE	DATE
	4	5	6

NOTE
FLOOR TILE COORDING
 Entry, Hall, Living Room, Kitchen, Dining Room, Bath, Bed Rooms, Sewing Room, Laundry, Cold Room, Basement, and Stairs.
 Tiles: White Gold on Red similar to P-324
 Bath Room: Black on Light Gray similar to P-330
 Kitchen: Ivory similar to P-324
 Numbers used are for Armstrongs Standard Asphalt Tile

ROOM NO.	NAME OF ROOM	FLOOR	BASE	WAINCOT	WALLS	CEILING	FINISH OF WOOD WORK	PAINTED
1	Entry							
2	Living Room							
3	Kitchen							
4	Dinette							
5	Hall							
6	Bath							
7	Bed Room							
8	Bed Room							
9	Bed Room							
10	Hall							
11	Bed Room							
12	Bed Room							
13	Sewing Room							
	Basement							
	Laundry							
	Cold Room							

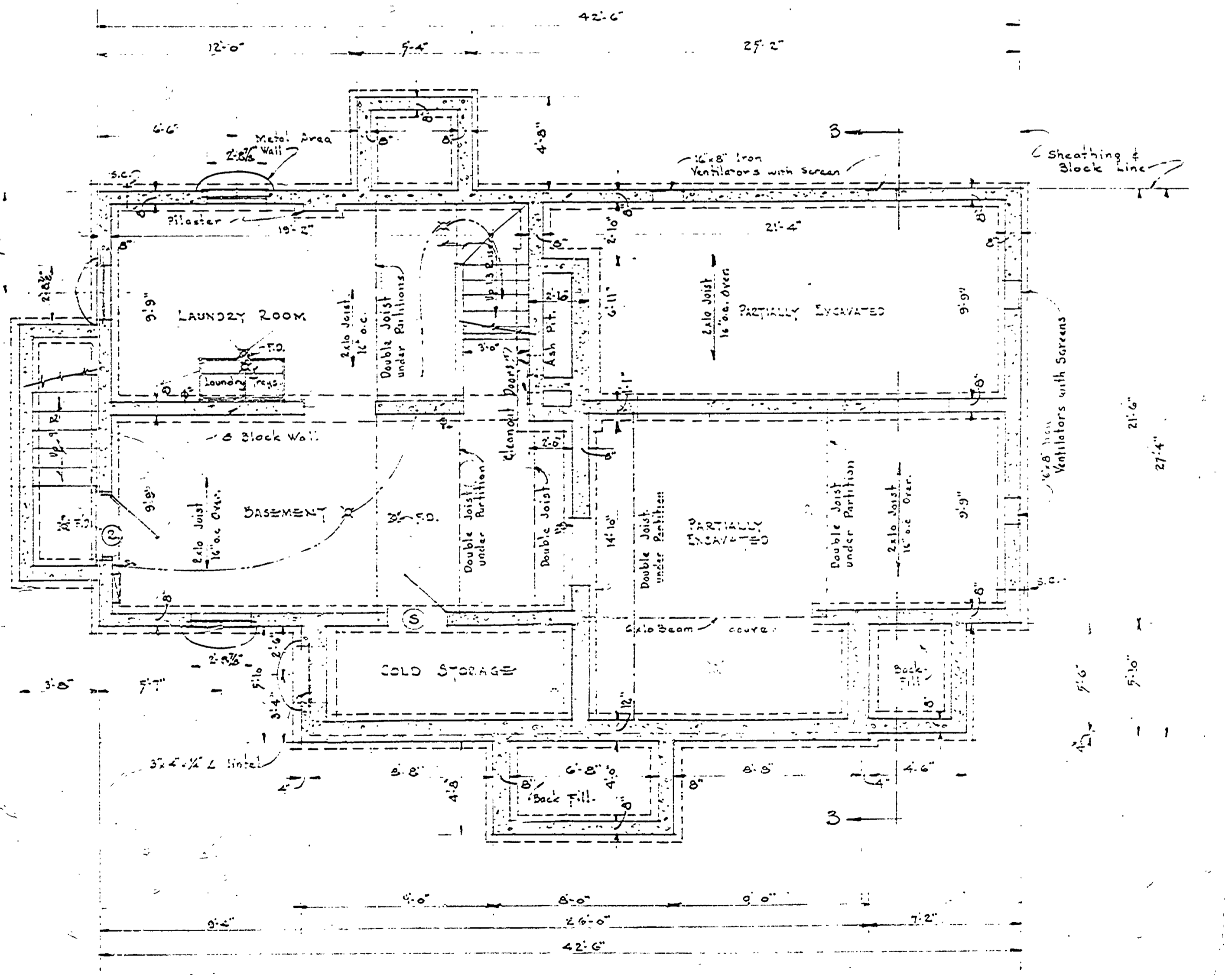
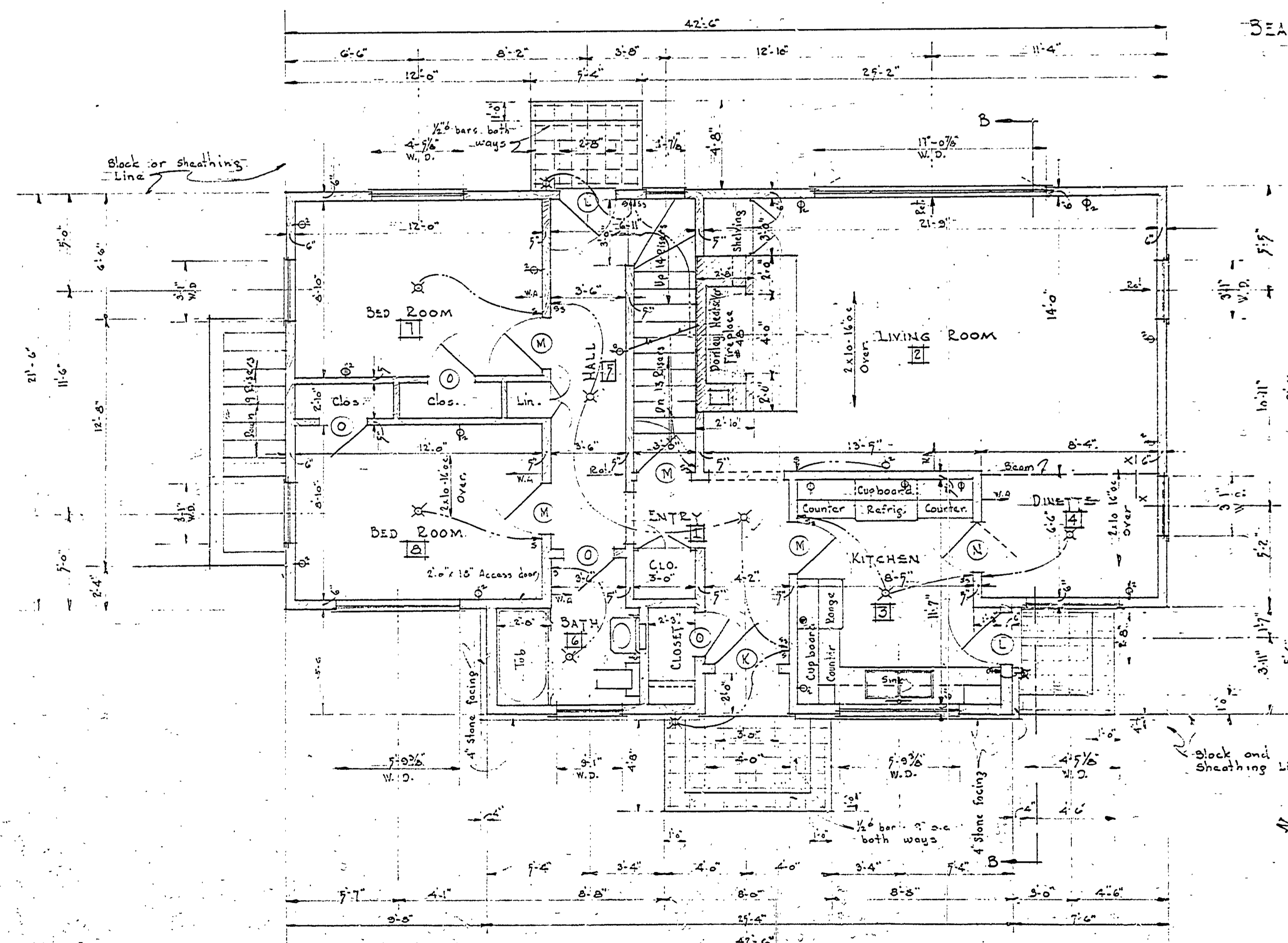
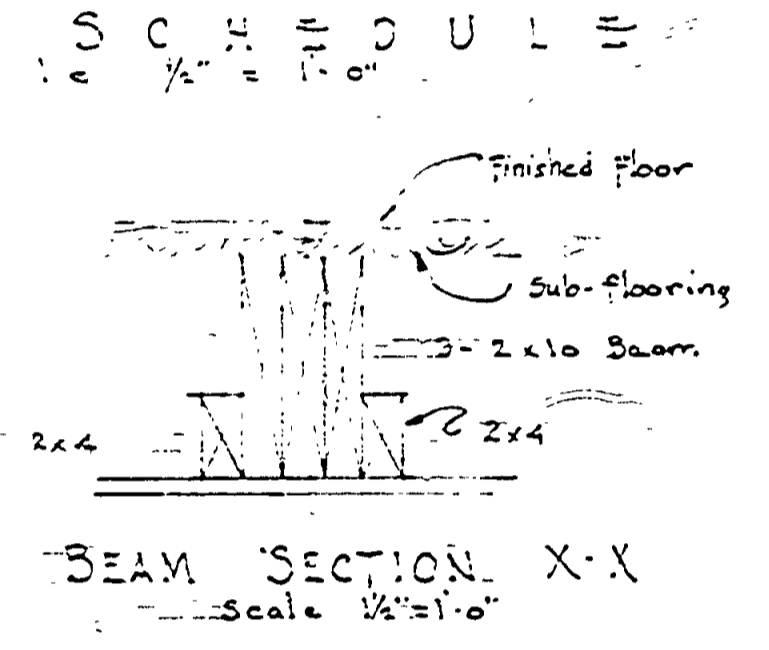
NOTE
 Interior finish: Woodwork of halls, stairway, living room and dinette to be stained & sealed with white "Firsite".
 Wipe off excess stain a few minutes after applying leaving a slight tint of white in the grain of the wood.
 Apply two (2) coats "Satinlac" over "Firsite" stain and sealer. The products "Firsite" and "Satinlac" are manufactured by the U.S. Plywood Corp.
 Exterior finish: Rough sawn siding and woodwork are to be stained with #21 Silver Gray stain paste mixed with clear creosote oil. Proportion of mix to be determined on the job striving to attain a weathered effect similar to weathered gray of an old unpainted barn.
 Add as much pigment to creosote oil as is possible and still obtain desired weathered gray transparent effect showing grain of wood.
 Roof: Shingles to be stained with Carbo-Sato creosote; (by the emersion method)

NOTE: "A" items changed during construction.



NO.	CATALOG	WIDTH	HEIGHT	TYPE	FINISH	MULTI-PANED	REMARKS
A	1	19-1/2"	11-0"	4-5/8"	2-1/2"	2-1/2"	2413-N.L. - 44 Picture - 2413-N.L. (See Elevation)
B	2	23-1/2"	11-0"	4-5/8"	2-1/2"	2-1/2"	
C	3	23-1/2"	11-0"	4-5/8"	2-1/2"	2-1/2"	
D	4	23-1/2"	11-0"	4-5/8"	2-1/2"	2-1/2"	
E	5	23-1/2"	11-0"	4-5/8"	2-1/2"	2-1/2"	
F	6	23-1/2"	11-0"	4-5/8"	2-1/2"	2-1/2"	
G	7	23-1/2"	11-0"	4-5/8"	2-1/2"	2-1/2"	
H	8	23-1/2"	11-0"	4-5/8"	2-1/2"	2-1/2"	
I	9	23-1/2"	11-0"	4-5/8"	2-1/2"	2-1/2"	
J	10	23-1/2"	11-0"	4-5/8"	2-1/2"	2-1/2"	
K	11	23-1/2"	11-0"	4-5/8"	2-1/2"	2-1/2"	
L	12	23-1/2"	11-0"	4-5/8"	2-1/2"	2-1/2"	
M	13	23-1/2"	11-0"	4-5/8"	2-1/2"	2-1/2"	
N	14	23-1/2"	11-0"	4-5/8"	2-1/2"	2-1/2"	
O	15	23-1/2"	11-0"	4-5/8"	2-1/2"	2-1/2"	
P	16	23-1/2"	11-0"	4-5/8"	2-1/2"	2-1/2"	
Q	17	23-1/2"	11-0"	4-5/8"	2-1/2"	2-1/2"	
R	18	23-1/2"	11-0"	4-5/8"	2-1/2"	2-1/2"	
S	19	23-1/2"	11-0"	4-5/8"	2-1/2"	2-1/2"	
T	20	23-1/2"	11-0"	4-5/8"	2-1/2"	2-1/2"	
U	21	23-1/2"	11-0"	4-5/8"	2-1/2"	2-1/2"	
V	22	23-1/2"	11-0"	4-5/8"	2-1/2"	2-1/2"	
W	23	23-1/2"	11-0"	4-5/8"	2-1/2"	2-1/2"	
X	24	23-1/2"	11-0"	4-5/8"	2-1/2"	2-1/2"	
Y	25	23-1/2"	11-0"	4-5/8"	2-1/2"	2-1/2"	
Z	26	23-1/2"	11-0"	4-5/8"	2-1/2"	2-1/2"	
AA	27	23-1/2"	11-0"	4-5/8"	2-1/2"	2-1/2"	
AB	28	23-1/2"	11-0"	4-5/8"	2-1/2"	2-1/2"	
AC	29	23-1/2"	11-0"	4-5/8"	2-1/2"	2-1/2"	
AD	30	23-1/2"	11-0"	4-5/8"	2-1/2"	2-1/2"	
AE	31	23-1/2"	11-0"	4-5/8"	2-1/2"	2-1/2"	
AF	32	23-1/2"	11-0"	4-5/8"	2-1/2"	2-1/2"	
AG	33	23-1/2"	11-0"	4-5/8"	2-1/2"	2-1/2"	
AH	34	23-1/2"	11-0"	4-5/8"	2-1/2"	2-1/2"	
AI	35	23-1/2"	11-0"	4-5/8"	2-1/2"	2-1/2"	
AJ	36	23-1/2"	11-0"	4-5/8"	2-1/2"	2-1/2"	
AK	37	23-1/2"	11-0"	4-5/8"	2-1/2"	2-1/2"	
AL	38	23-1/2"	11-0"	4-5/8"	2-1/2"	2-1/2"	
AM	39	23-1/2"	11-0"	4-5/8"	2-1/2"	2-1/2"	
AN	40	23-1/2"	11-0"	4-5/8"	2-1/2"	2-1/2"	
AO	41	23-1/2"	11-0"	4-5/8"	2-1/2"	2-1/2"	
AP	42	23-1/2"	11-0"	4-5/8"	2-1/2"	2-1/2"	
AQ	43	23-1/2"	11-0"	4-5/8"	2-1/2"	2-1/2"	
AR	44	23-1/2"	11-0"	4-5/8"	2-1/2"	2-1/2"	
AS	45	23-1/2"	11-0"	4-5/8"	2-1/2"	2-1/2"	
AT	46	23-1/2"	11-0"	4-5/8"	2-1/2"	2-1/2"	
AU	47	23-1/2"	11-0"	4-5/8"	2-1/2"	2-1/2"	
AV	48	23-1/2"	11-0"	4-5/8"	2-1/2"	2-1/2"	
AW	49	23-1/2"	11-0"	4-5/8"	2-1/2"	2-1/2"	
AX	50	23-1/2"	11-0"	4-5/8"	2-1/2"	2-1/2"	
AY	51	23-1/2"	11-0"	4-5/8"	2-1/2"	2-1/2"	
AZ	52	23-1/2"	11-0"	4-5/8"	2-1/2"	2-1/2"	
BA	53	23-1/2"	11-0"	4-5/8"	2-1/2"	2-1/2"	
BB	54	23-1/2"	11-0"	4-5/8"	2-1/2"	2-1/2"	
BC	55	23-1/2"	11-0"	4-5/8"	2-1/2"	2-1/2"	
BD	56	23-1/2"	11-0"	4-5/8"	2-1/2"	2-1/2"	
BE	57	23-1/2"	11-0"	4-5/8"	2-1/2"	2-1/2"	
BF	58	23-1/2"	11-0"	4-5/8"	2-1/2"	2-1/2"	
BG	59	23-1/2"	11-0"	4-5/8"	2-1/2"	2-1/2"	
BH	60	23-1/2"	11-0"	4-5/8"	2-1/2"	2-1/2"	
BI	61	23-1/2"	11-0"	4-5/8"	2-1/2"	2-1/2"	
BJ	62	23-1/2"	11-0"	4-5/8"	2-1/2"	2-1/2"	
BK	63	23-1/2"	11-0"	4-5/8"	2-1/2"	2-1/2"	
BL	64	23-1/2"	11-0"	4-5/8"	2-1/2"	2-1/2"	
BM	65	23-1/2"	11-0"	4-5/8"	2-1/2"	2-1/2"	
BN	66	23-1/2"	11-0"	4-5/8"	2-1/2"	2-1/2"	
BO	67	23-1/2"	11-0"	4-5/8"	2-1/2"	2-1/2"	
BP	68	23-1/2"	11-0"	4-5/8"	2-1/2"	2-1/2"	
BQ	69	23-1/2"	11-0"	4-5/8"	2-1/2"	2-1/2"	
BR	70	23-1/2"	11-0"	4-5/8"	2-1/2"	2-1/2"	
BS	71	23-1/2"	11-0"	4-5/8"	2-1/2"	2-1/2"	
BT	72	23-1/2"	11-0"	4-5/8"	2-1/2"	2-1/2"	
BU	73	23-1/2"	11-0"	4-5/8"	2-1/2"	2-1/2"	
BV	74	23-1/2"	11-0"	4-5/8"	2-1/2"	2-1/2"	
BW	75	23-1/2"	11-0"	4-5/8"	2-1/2"	2-1/2"	
BX	76	23-1/2"	11-0"	4-5/8"	2-1/2"	2-1/2"	
BY	77	23-1/2"	11-0"	4-5/8"	2-1/2"	2-1/2"	
BZ	78	23-1/2"	11-0"	4-5/8"	2-1/2"	2-1/2"	
CA	79	23-1/2"	11-0"	4-5/8"	2-1/2"	2-1/2"	
CB	80	23-1/2"	11-0"	4-5/8"	2-1/2"	2-1/2"	
CC	81	23-1/2"	11-0"	4-5/8"	2-1/2"	2-1/2"	
CD	82	23-1/2"	11-0"	4-5/8"	2-1/2"	2-1/2"	
CE	83	23-1/2"	11-0"	4-5/8"	2-1/2"	2-1/2"	
CF	84	23-1/2"	11-0"	4-5/8"	2-1/2"	2-1/2"	
CG	85	23-1/2"	11-0"	4-5/8"	2-1/2"	2-1/2"	
CH	86	23-1/2"	11-0"	4-5/8"	2-1/2"	2-1/2"	
CI	87	23-1/2"	11-0"	4-5/8"	2-1/2"	2-1/2"	
CJ	88	23-1/2"	11-0"	4-5/8"	2-1/2"	2-1/2"	
CK	89	23-1/2"	11-0"	4-5/8"	2-1/2"	2-1/2"	
CL	90	23-1/2"	11-0"	4-5/8"	2-1/2"	2-1/2"	
CM	91	23-1/2"	11-0"	4-5/8"	2-1/2"	2-1/2"	
CN	92	23-1/2"	11-0"	4-5/8"	2-1/2"	2-1/2"	
CO	93	23-1/2"	11-0"	4-5/8"	2-1/2"	2-1/2"	
CP	94	23-1/2"	11-0"	4-5/8"	2-1/2"	2-1/2"	
CQ	95	23-1/2"	11-0"	4-5/8"	2-1/2"	2-1/2"	
CR	96	23-1/2"	11-0"	4-5/8"	2-1/2"	2-1/2"	
CS	97	23-1/2"	11-0"	4-5/8"	2-1/2"	2-1/2"	
CT	98	23-1/2"	11-0"	4-5/8"	2-1/2"	2-1/2"	
CU	99	23-1/2"	11-0"	4-5/8"	2-1/2"	2-1/2"	
CV	100	23-1/2"	11-0"	4-5/8"	2-1/2"	2-1/2"	

NOTE: All vented windows are to have screens, Catalog No. and sizes are taken from Fenestra hand Book.



- ELECTRICAL SYMBOLS**
- X Ceiling Light outlet
 - X Lamp Holder with pull Switch
 - X Bracket Light outlet
 - Fluorescent Light outlet
 - Duplex Convenience Outlet
 - Single pole Switch
 - Three way Switch
 - Special Purpose Outlet