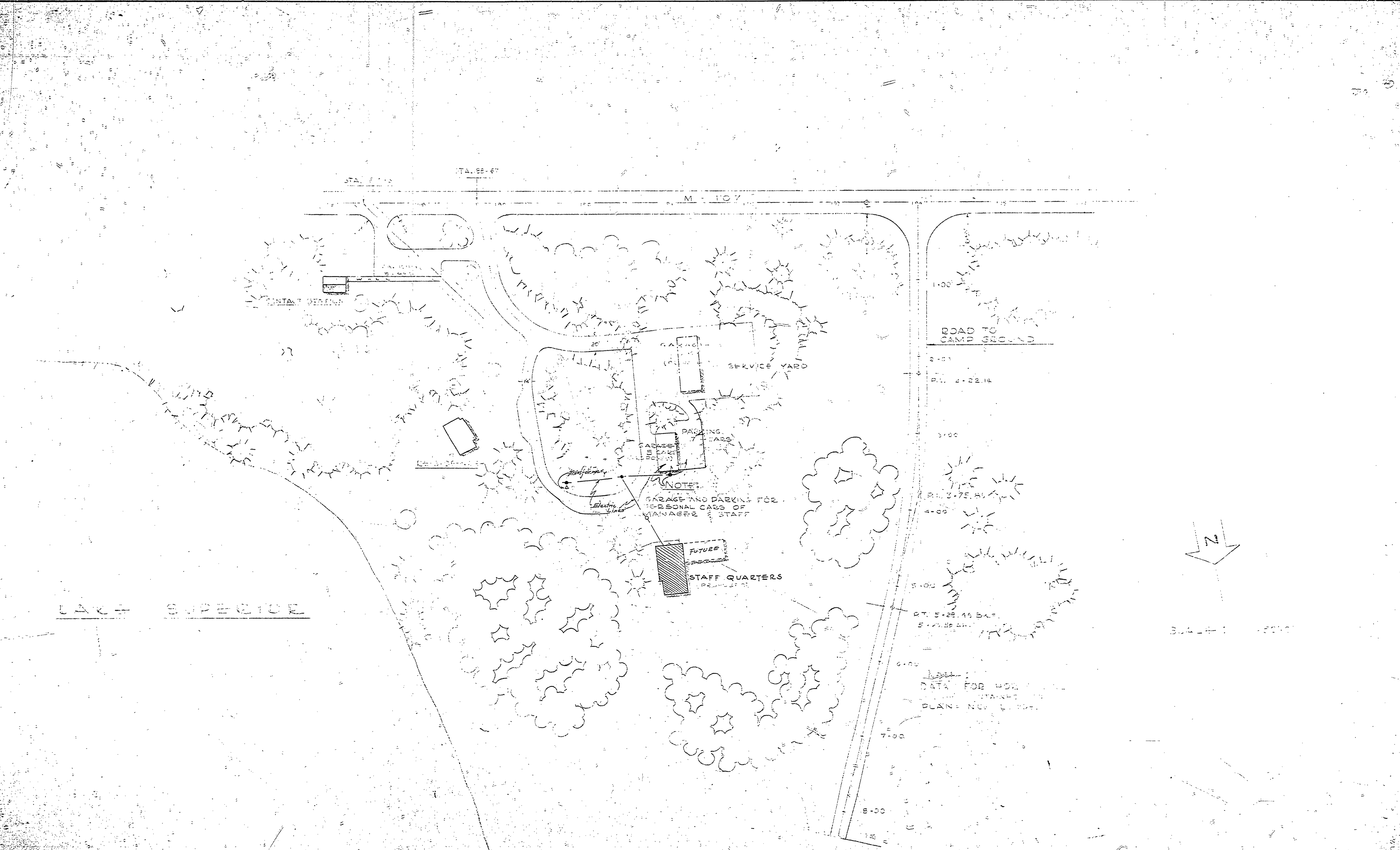


REVISIONS		APPROVED BY		REVIEWED BY SECTIONS		DATE	
NO.	DATE	BY	DATE	SECTION	DATE	BY	DATE
1			2-23-51	J.J.K.	2-23-51	J.J.K.	2-23-51
2			2-23-51	H.C.M.	2-23-51	H.C.M.	2-23-51
3			2-23-51	J.J.K.	2-23-51	J.J.K.	2-23-51
4							
5							
6							



MICHIGAN
DEPARTMENT OF CONSERVATION
PARKS AND RECREATION DIVISION

PORCUPINE MOUNTAINS STATE PARK
STAFF QUARTERS

SHEET NO. 6 OF 6
PLAN NO. A-109