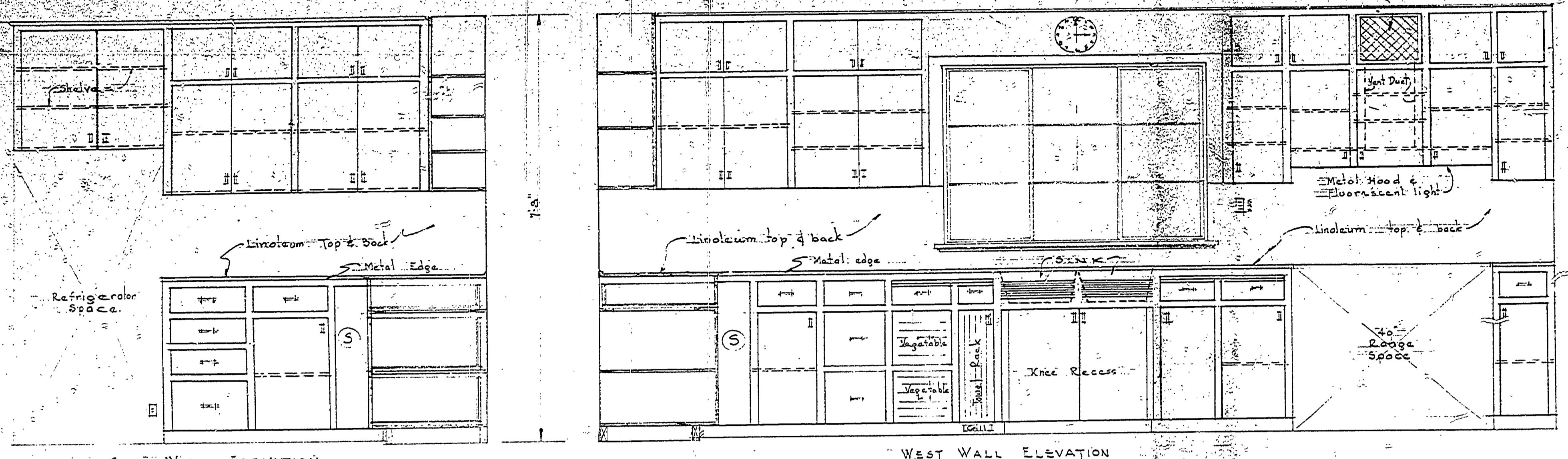


NO.	DATE	BY	REVISIONS
1			4
2			5
3			6

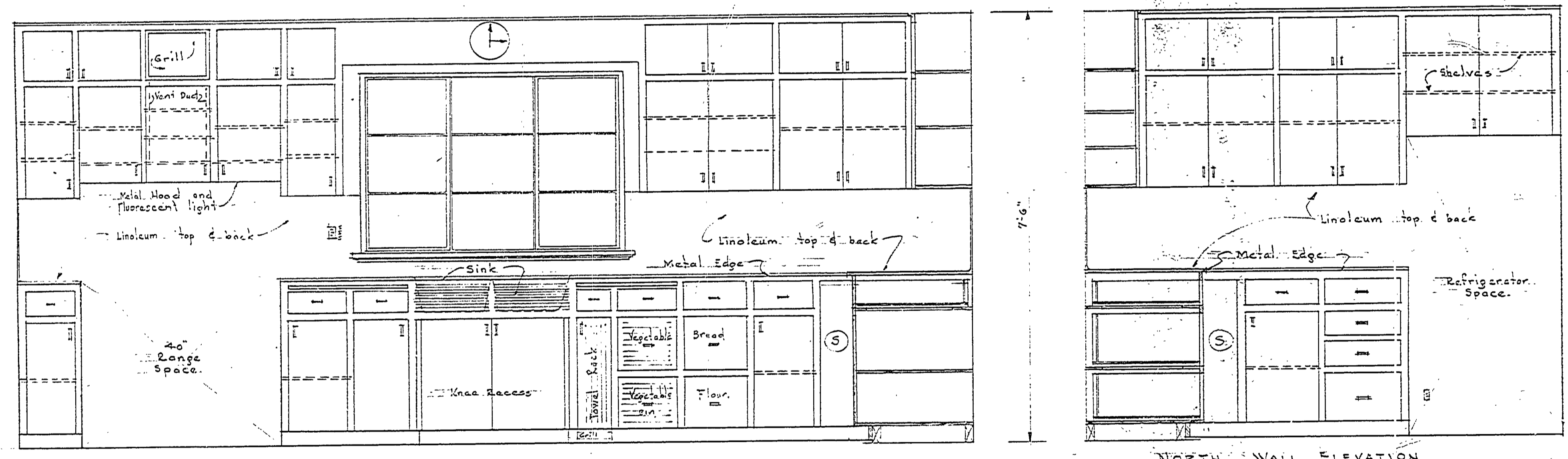
APPROVED BY	DATE	REVIEWED BY SECTIONS
<i>[Signature]</i>	6-6-52	J.R. 6-6-52
ASSISTANT CHIEF IN CHARGE		H.C.M. 6-6-52
OF DESIGN	6-6-52	J.R. 6-6-52

DATE	REVIEWED BY SECTIONS
6-6-52	J.R. 6-6-52
6-6-52	H.C.M. 6-6-52
6-6-52	J.R. 6-6-52

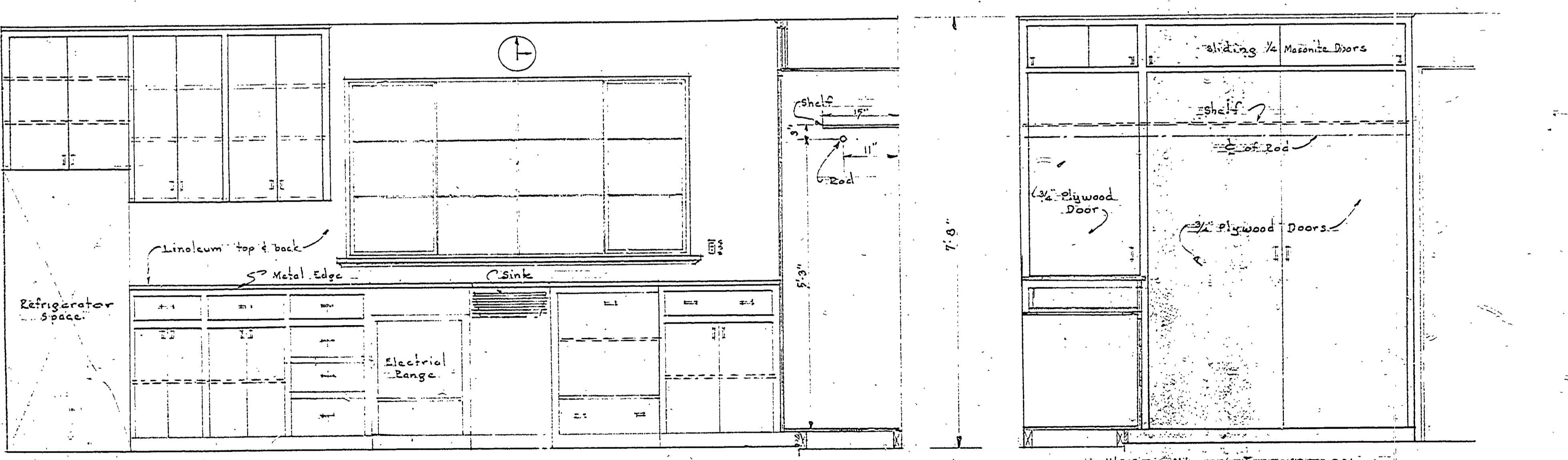
DATE	REVIEWED BY SECTIONS
6-6-52	J.R. 6-6-52
6-6-52	H.C.M. 6-6-52
6-6-52	J.R. 6-6-52



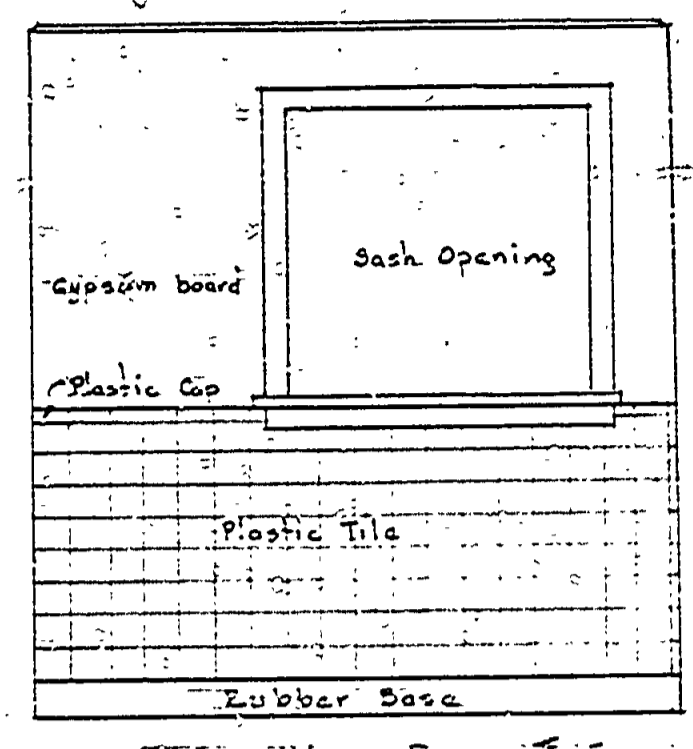
SOUTH WALL ELEVATION WEST WALL ELEVATION
KITCHEN #2 DETAIL
 Scale 1/4" = 1'-0"



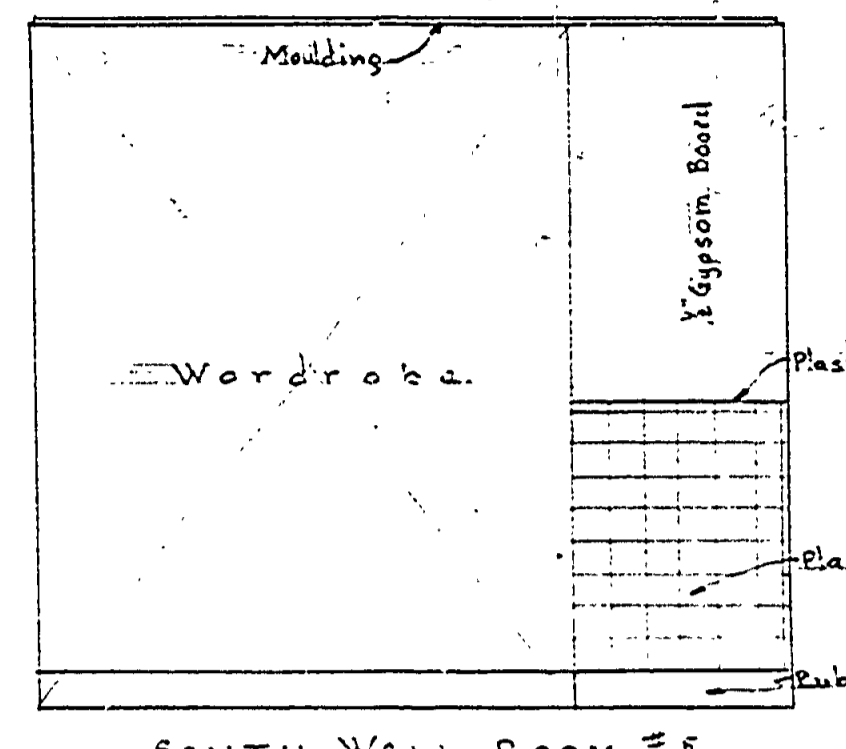
WEST WALL ELEVATION NORTH WALL ELEVATION
KITCHEN #1 DETAIL
 Scale 1/4" = 1'-0"



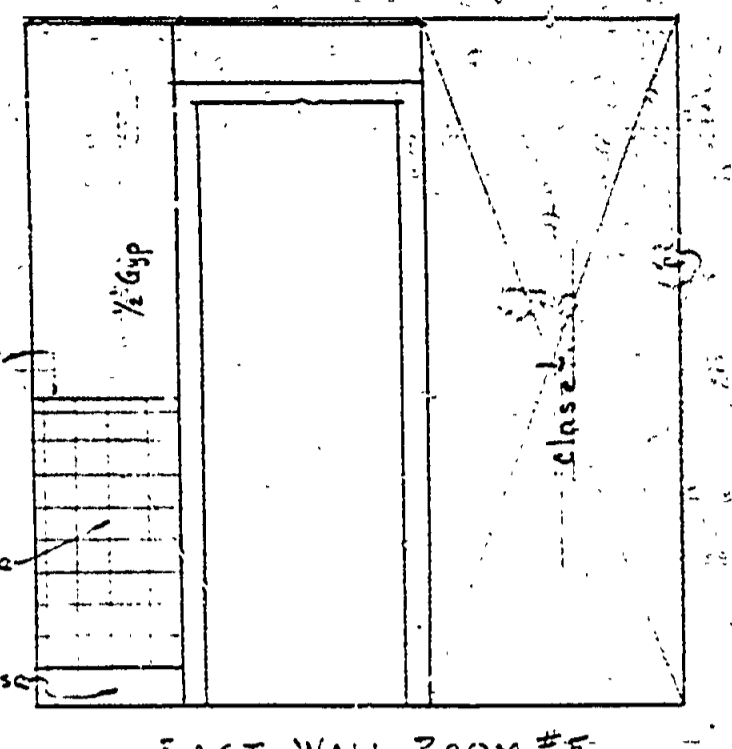
SOUTH WALL ELEVATION WEST WALL ELEVATION
KITCHEN #11 DETAIL
 Scale 1/4" = 1'-0"



WEST WALL ROOM #7

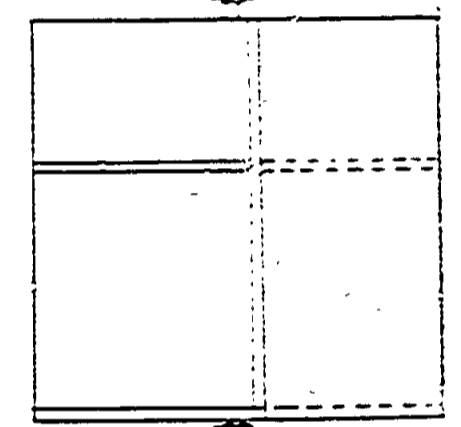


SOUTH WALL ROOM #7

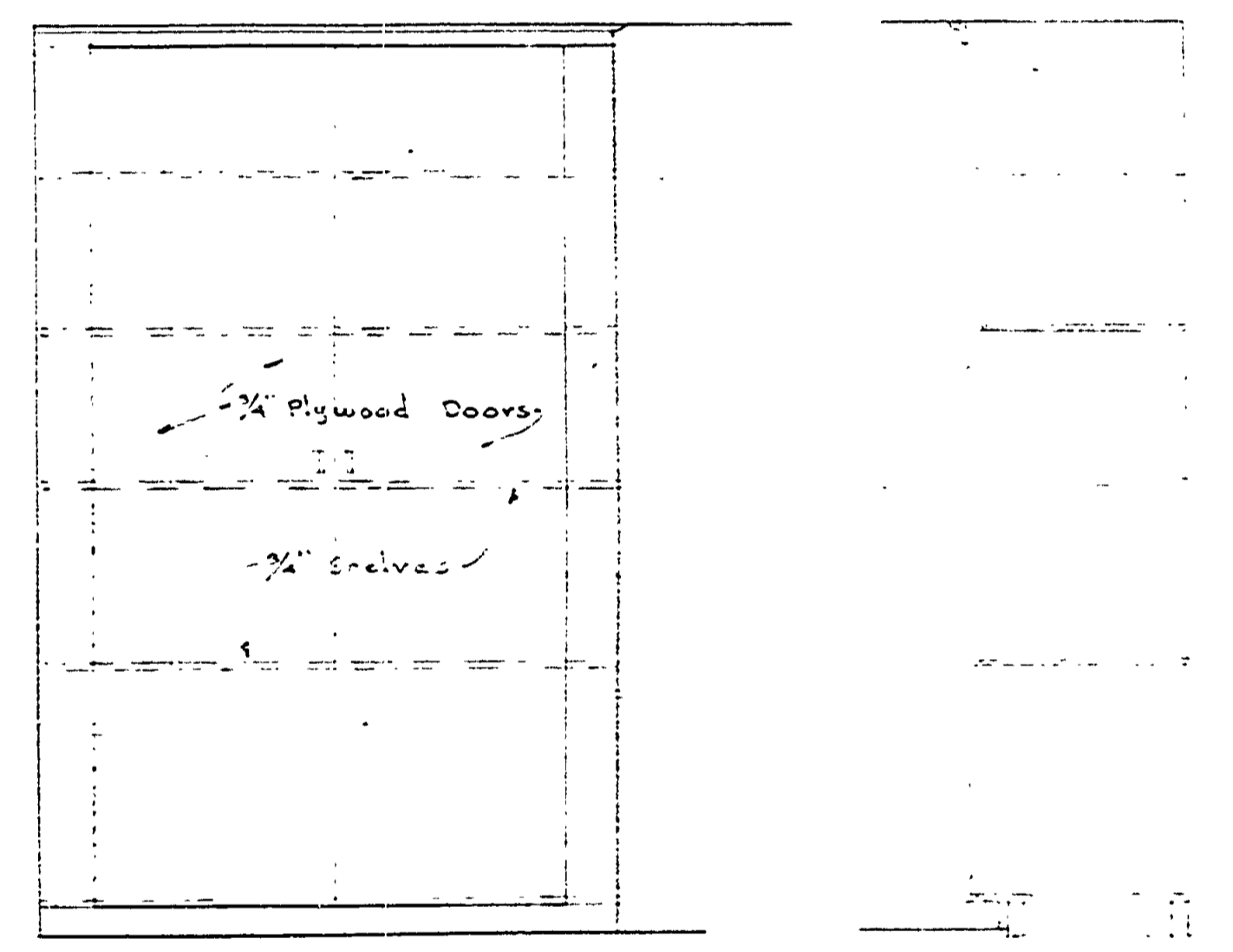


EAST WALL ROOM #7

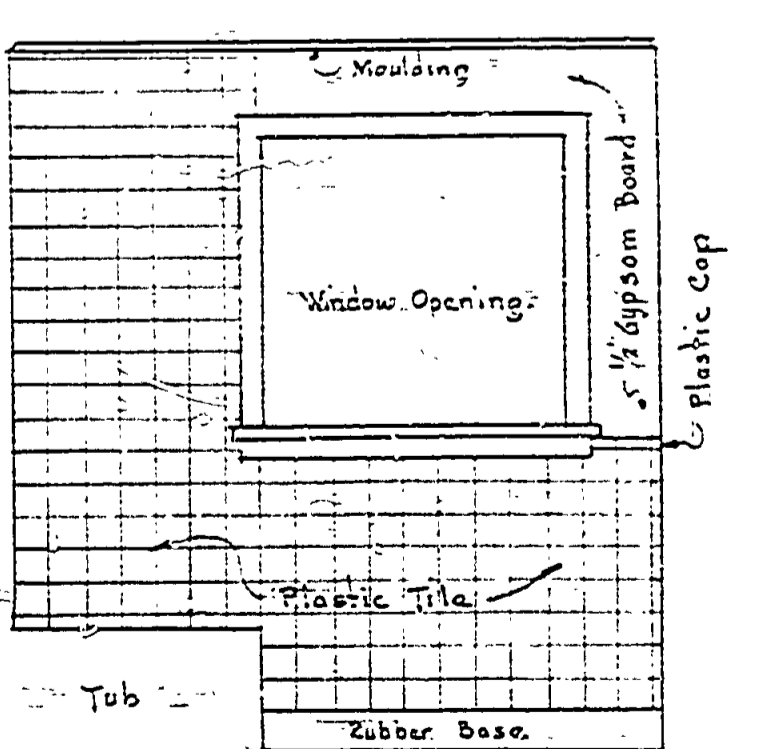
WALLS IN TOILET ROOM #4 OPPOSITE HAND
 40" PLASTIC TILE WAINSCOT LAYOUT
 Scale 1/4" = 1'-0"



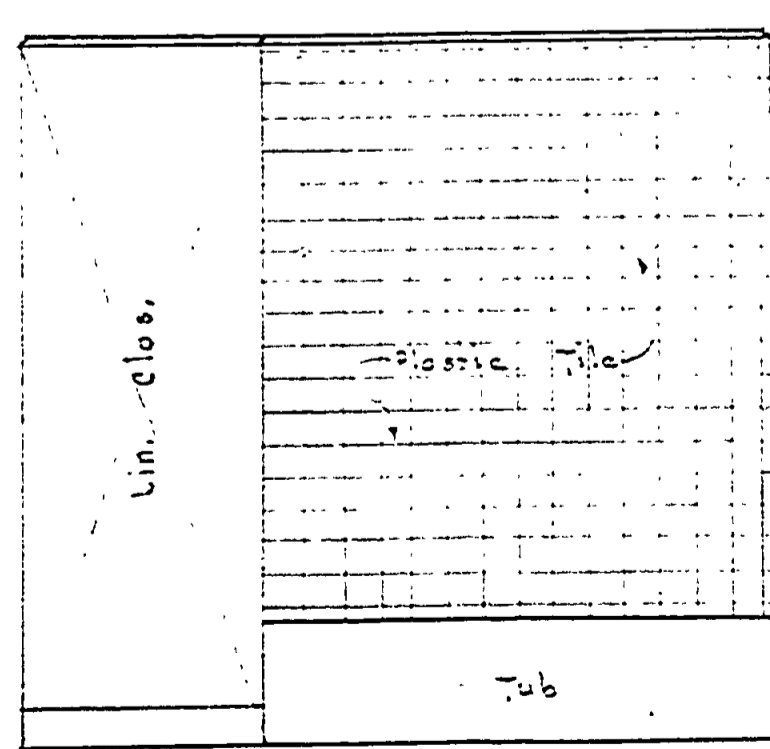
DETAIL 5
 REVOLVING SHELVING
 Scale 1/4" = 1'-0"



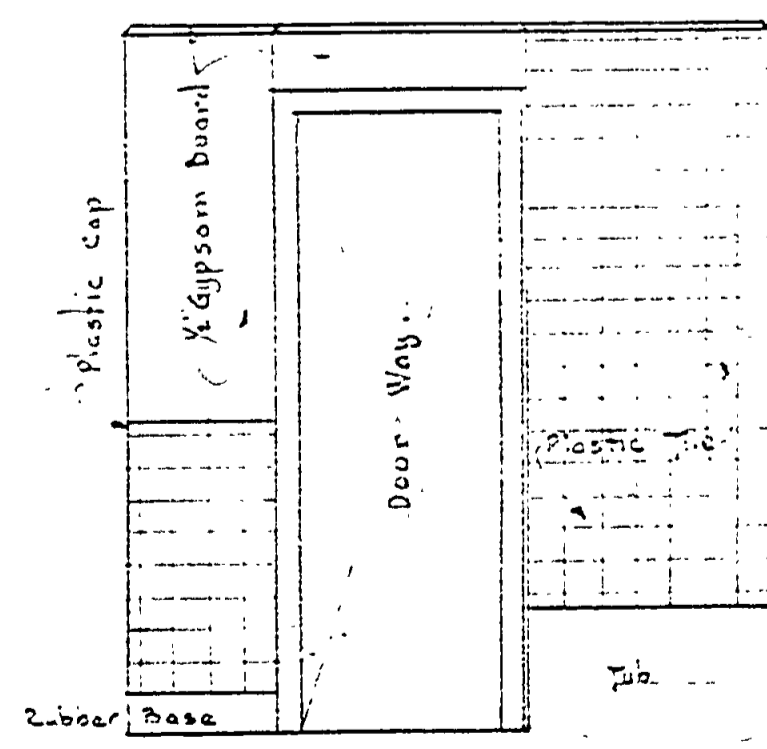
ELEVATION SECTION
 SECOND FLOOR WARDROBE (HALLS)
 Scale 1/4" = 1'-0"



WEST WALL ROOM #16



SOUTH WALL ROOM #16



EAST WALL ROOM #16

WALLS IN ROOM #17 OPPOSITE HAND
BATH ROOM PLASTIC TILE LAYOUT
 Scale 1/4" = 1'-0"

Note: Wash rooms and toilets to have plastic tile similar to Bath room - but only 40" wainscot height.