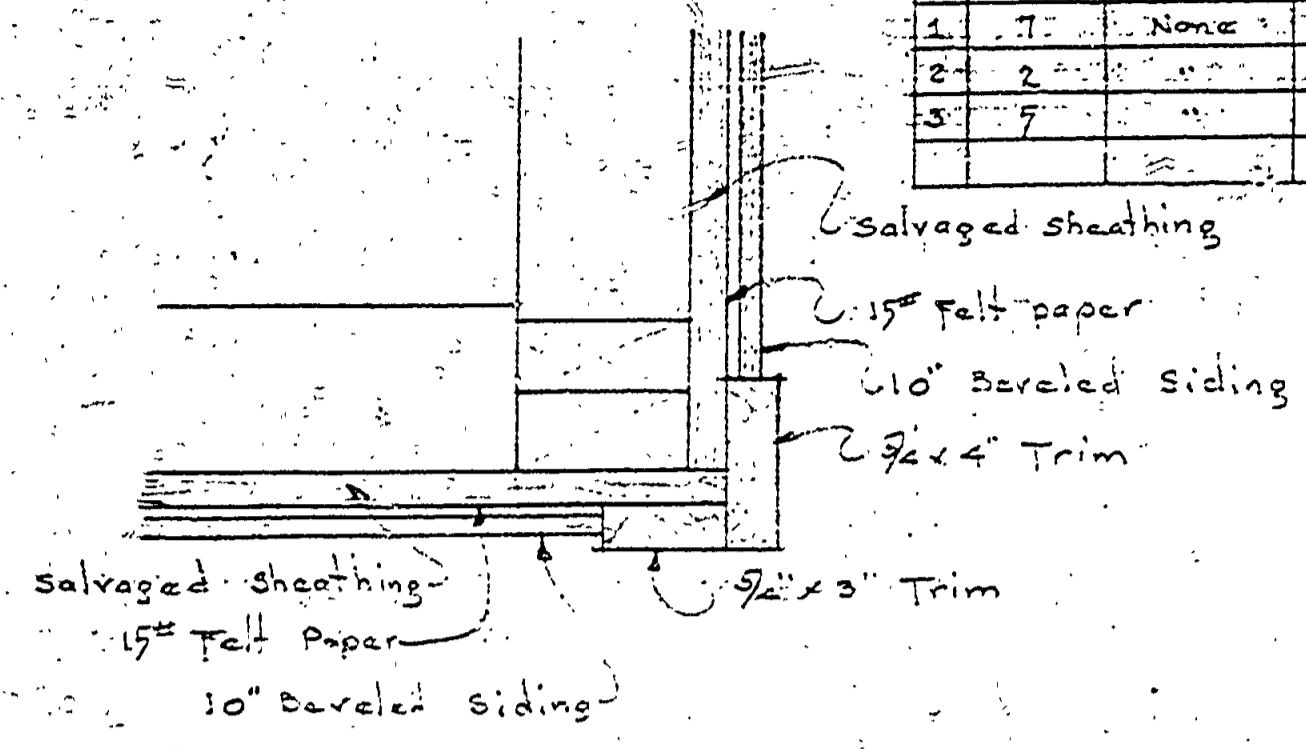


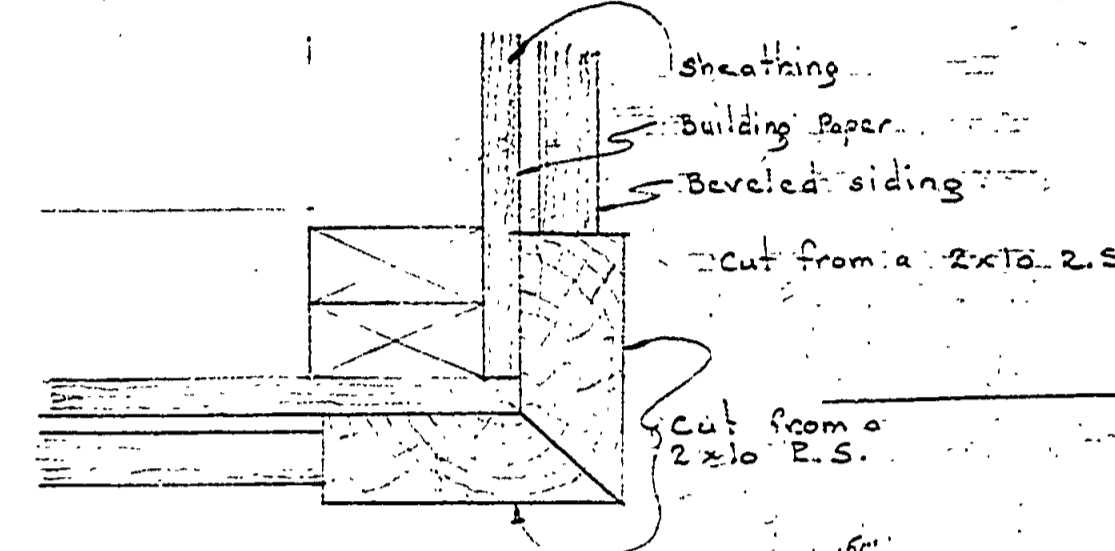
NO.	DATE	BY	REVISIONS		
			4	5	6
1					
2					
3					

WINDOW SCHEDULE								
#	QUANTITY	CATALOG NO.	OPENING WIDTH	OPENING HEIGHT	VENT	FINES	MULLION	REMARKS
1	7	None	3'-9"	5'-6"	✓	✓	✓	
2	2		3'-0"	3'-6"	✓	✓	✓	
3	7		2'-4"	4'-6"	✓	✓	✓	Double Hung

NOTE:
Sash are standard wood sash, 9 & 12 Lights.
Windows salvaged from C.C.C. buildings that
are approximately the sizes shown may be
substituted.

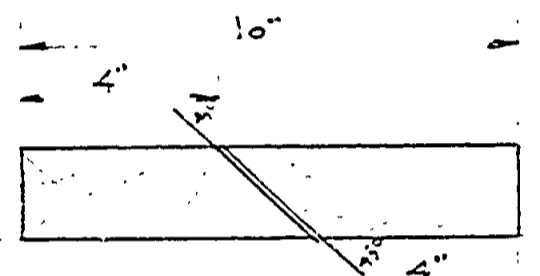


ALTERNATE CORNER DETAIL
Scale: 3" = 1'-0"
NOTE: This detail to be followed if stock
10" beveled siding is used.

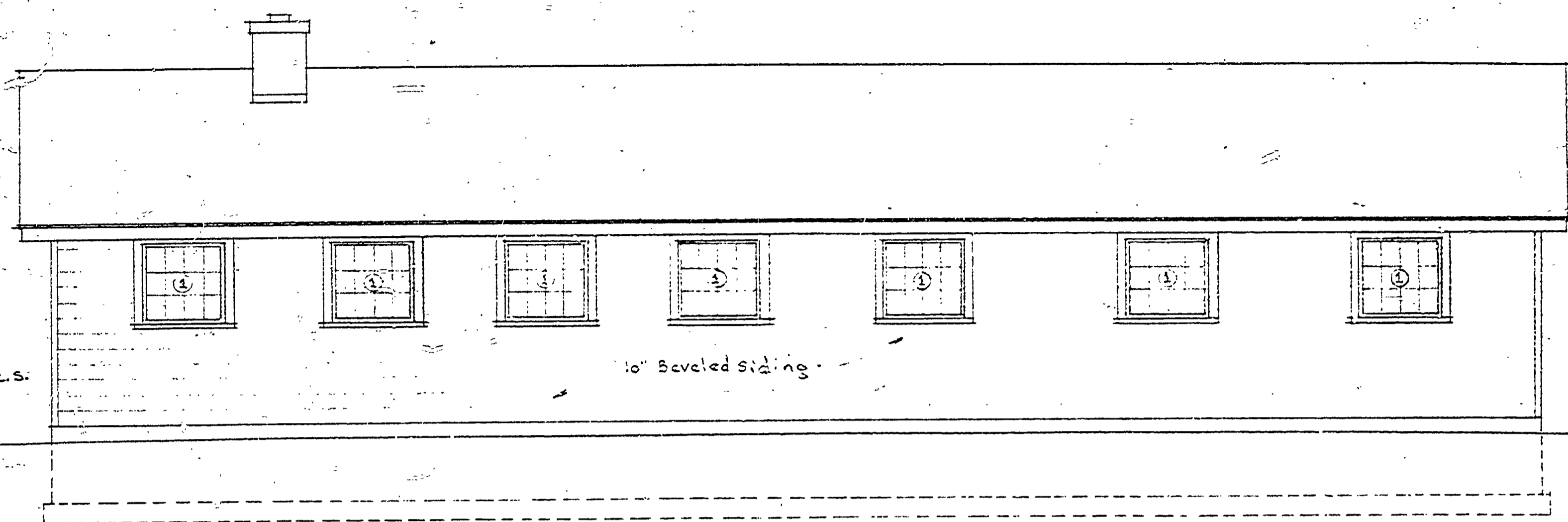


CORNER DETAIL
Scale: 3" = 1'-0"

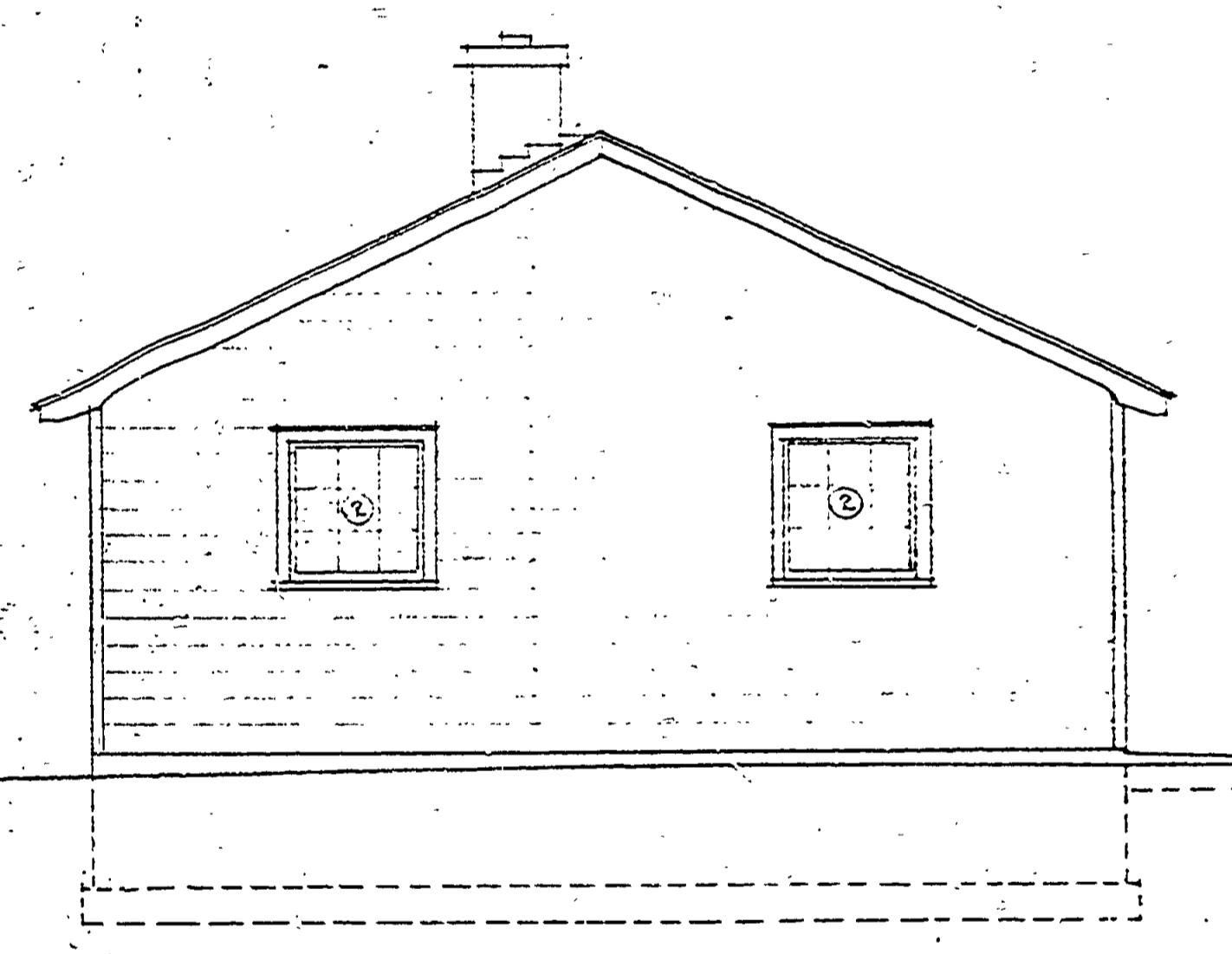
NOTE: This detail to be followed
if 10" siding used is resawn
from a 2"x10" materials as shown.



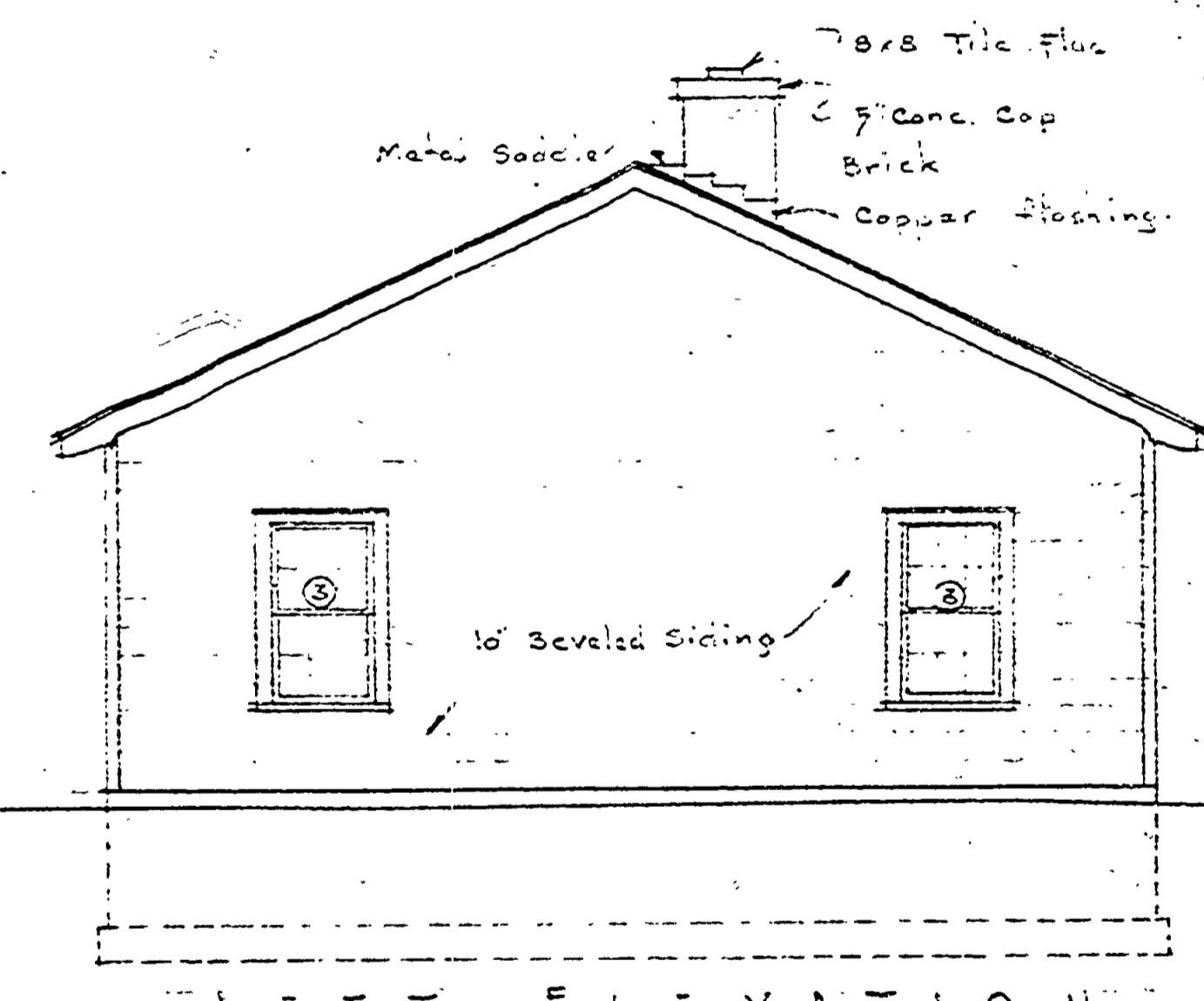
CORNER TRIM
2"x10" R.S.
Scale: 3" = 1'-0"



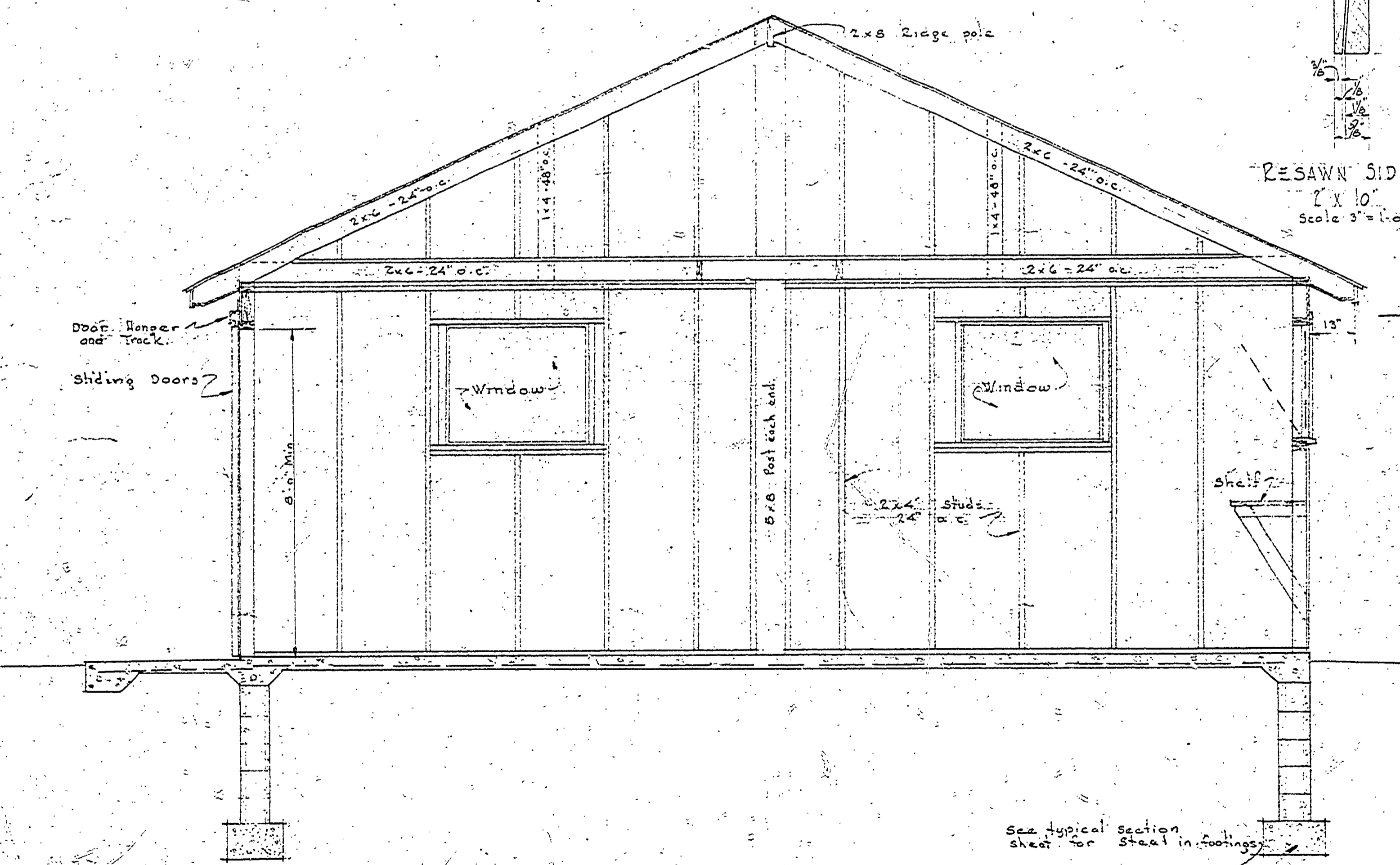
REAR ELEVATION
Scale: 1/4" = 1'-0"



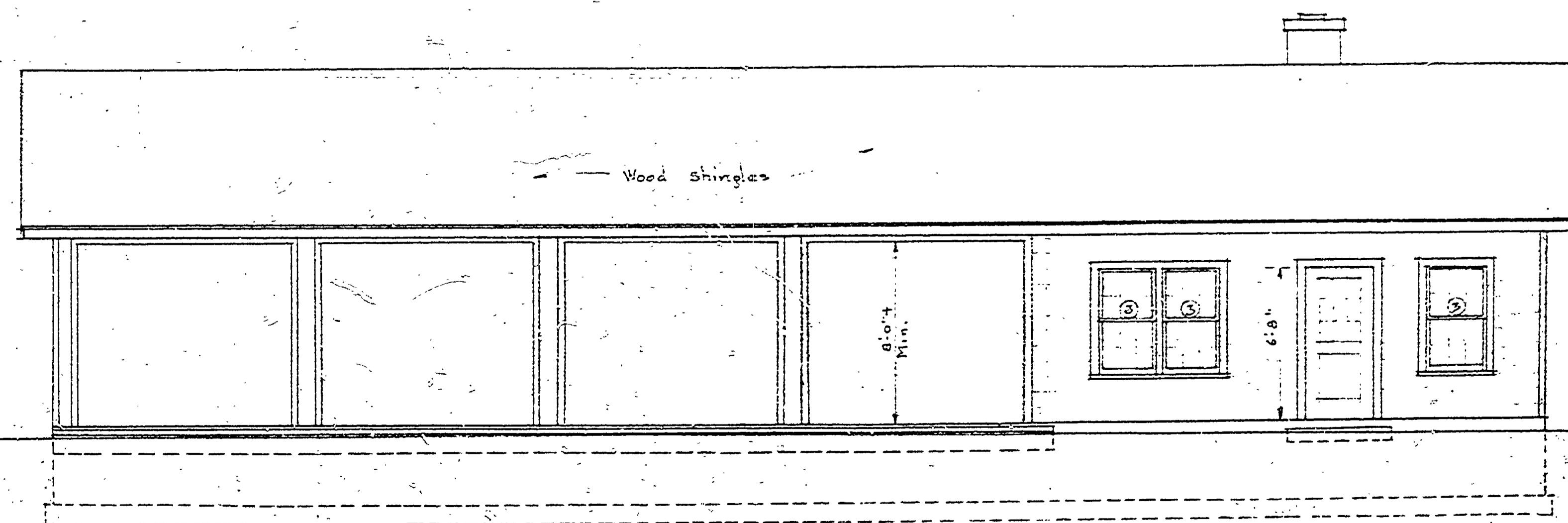
RIGHT ELEVATION
Scale: 1/4" = 1'-0"



LEFT ELEVATION
Scale: 1/4" = 1'-0"



SECTION THROUGH GARAGE



FRONT ELEVATION
Scale: 1/4" = 1'-0"

APPROVED BY: [Signature]
DATE: 11-25-47
ASSISTANT CHIEF IN CHARGE OF DESIGN: [Signature]
DATE: 11-25-47

REVIEWED BY SECTIONS:
ARCHITECTURAL: [Signature]
ENGINEERING: [Signature]
LANDSCAPE: [Signature]

MICHIGAN
DEPARTMENT OF CONSERVATION
PARKS AND RECREATION DIVISION

PORCUPINE MOUNTAINS RECREATION AREA
GARAGE & WORKSHOP

SHEET NO. 2 OF 2
PLAN NO. A-110