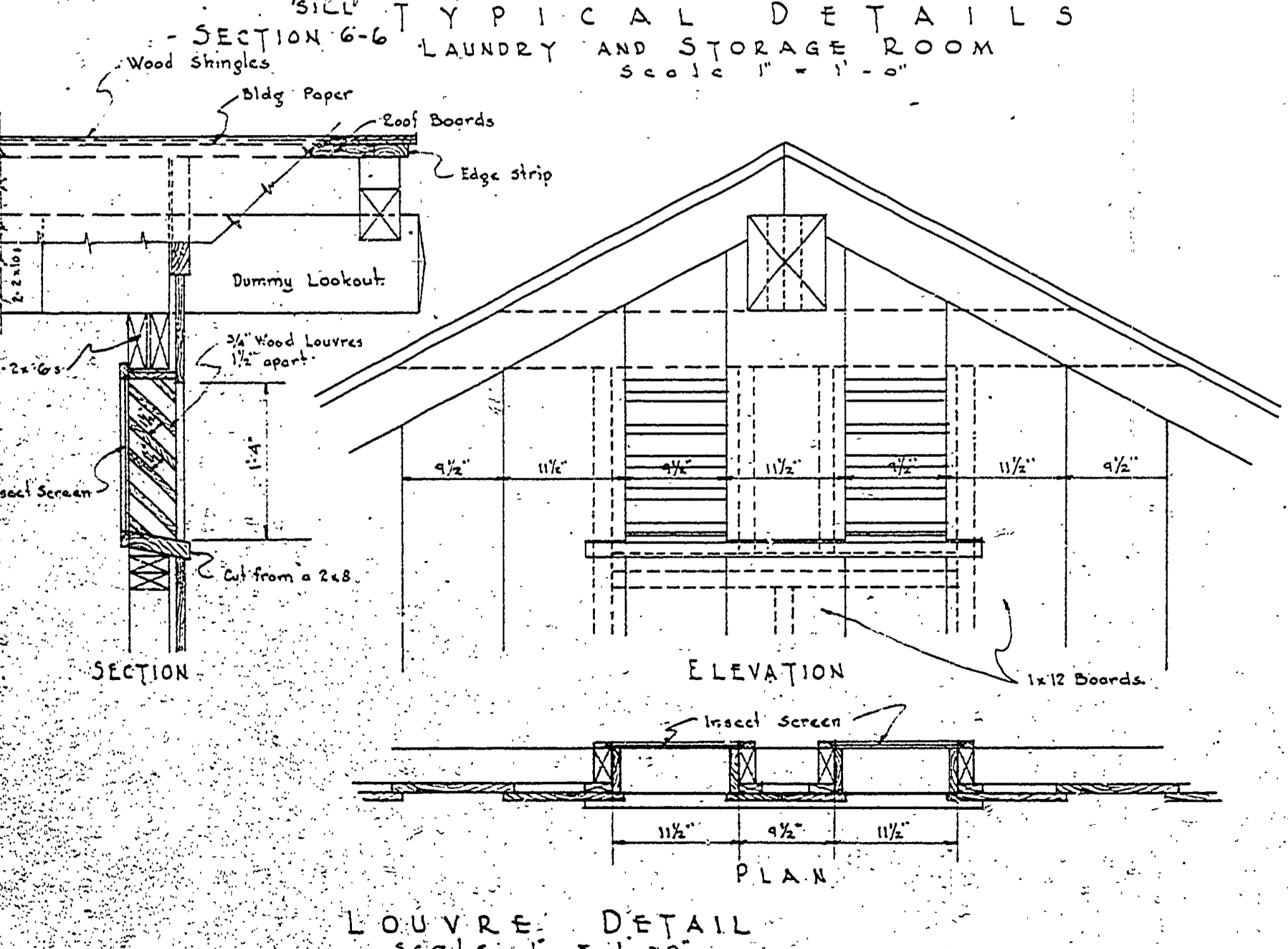
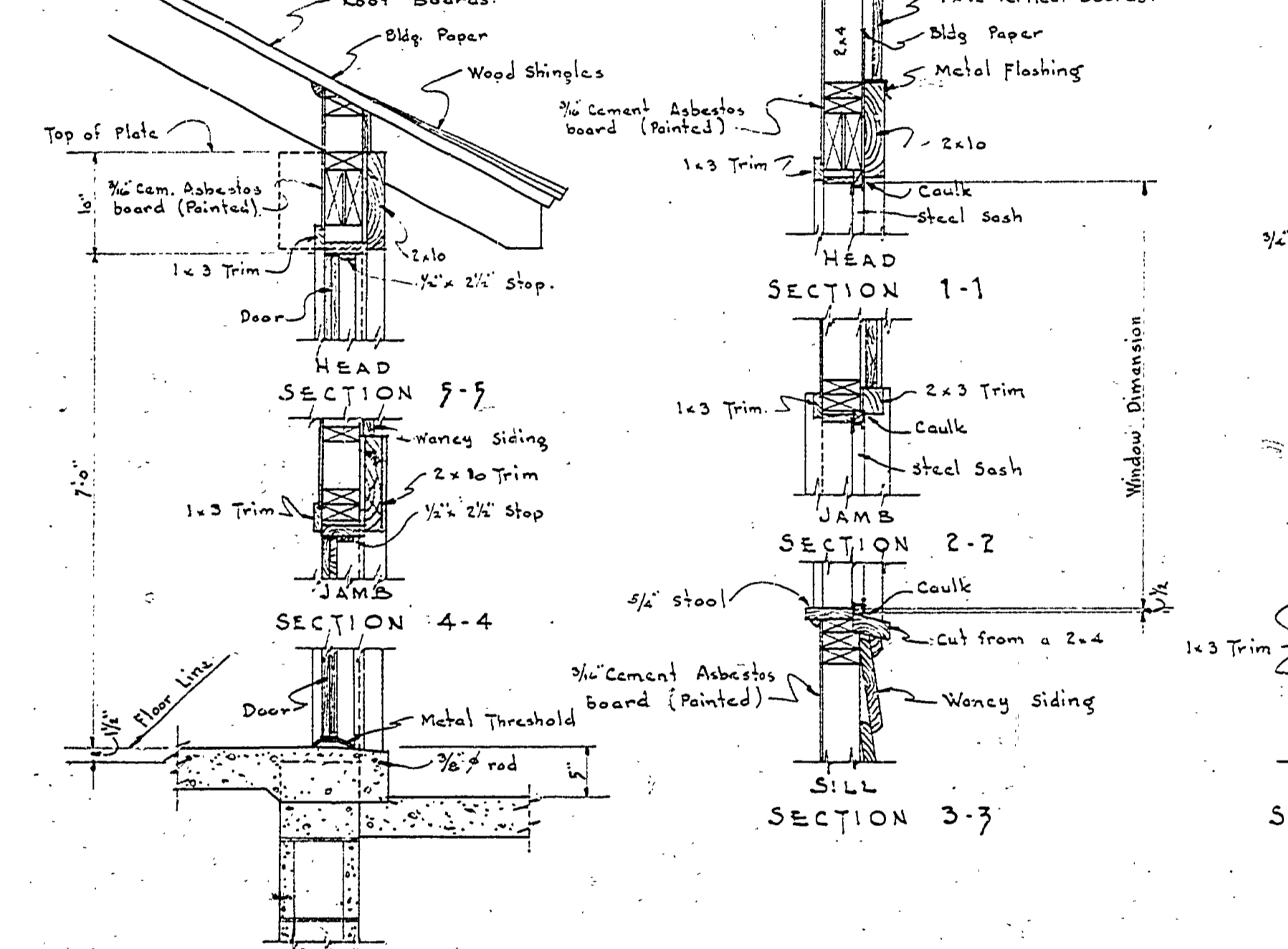
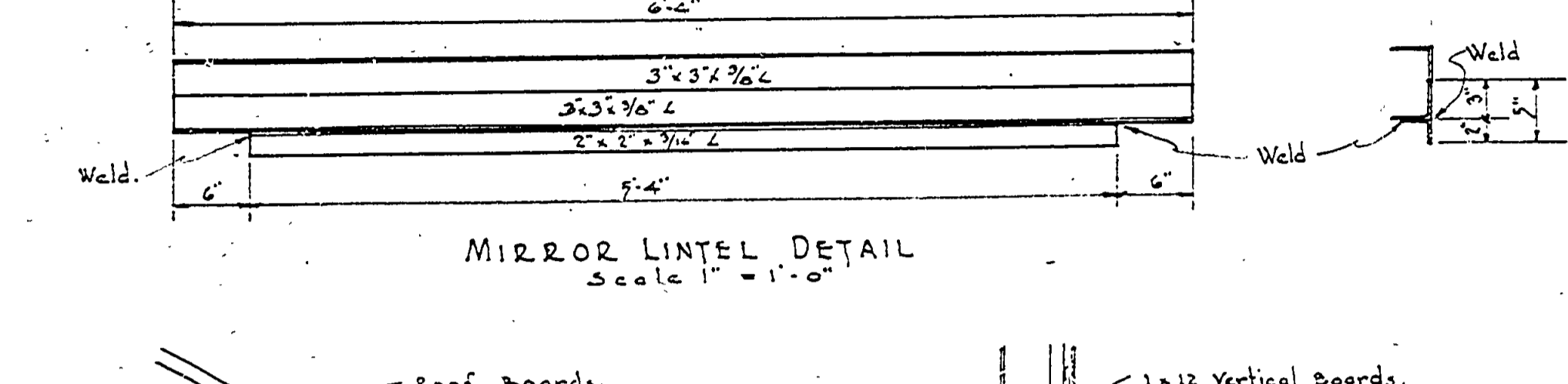
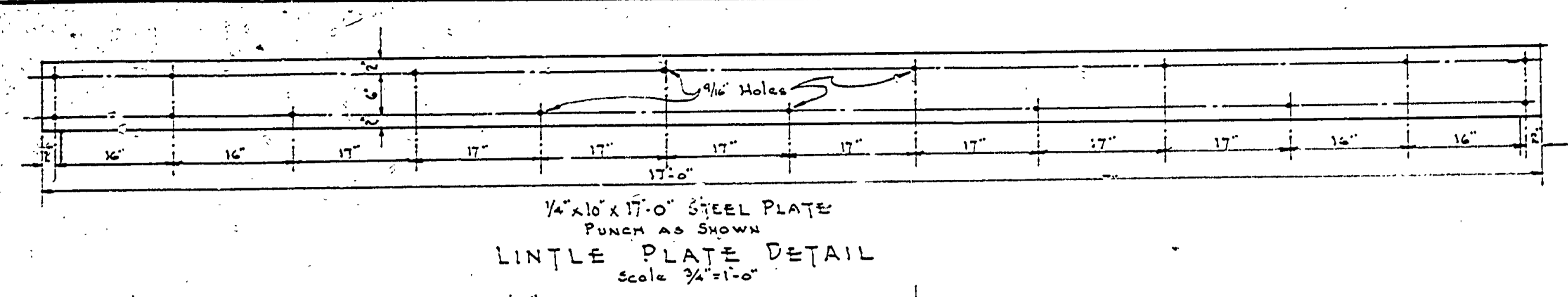


REVISIONS	NO.	DATE	BY
	1		
APPROVED BY	DATE	DATE	DATE
REVIEWED BY SECTIONS	ARCHITECTURAL	ENGINEERING	LANDSCAPE
CHECKED BY	DATE	DATE	DATE



ROOMS	FLOOR	BASE	FINISH SCHEDULE					
			WALLS	CEILING	STAINED	PAINTED	VARNISHED	WAXED
WOMEN'S TOILET	Concrete	Tile	Terrazzo & Wood	Exposed rafters & Roof Boards				
MEN'S TOILET	Concrete	Tile	Terrazzo & Wood	Exposed rafters & Roof Boards				
SHOWERS	Concrete	Tile	Terrazzo & Wood	1/2\"/>				
WASH ROOMS	Concrete	Tile	Terrazzo & Wood	1/2\"/>				
LAUNDRY ROOM	Concrete	Wood	1/2\"/>					
PORCH	Concrete	None	Wood	1/2\"/>				

NOTE:-  
 INTERIOR FINISH -- Stain with clear pentachlorophenol tinted with lamp black ground in oil sufficient for a very light gray stain to be applied to underside of roof boards, vertical boarding, and doors. Coat rafters and 1x12 trim board to receive some material in a medium dark gray. Color to be approved by Engineer before application. All surfaces to be finished with two (2) coats of Satinlac. (Satinlac manufactured by the U.S. Plywood Corporation.) Laundry room and storage room rafters and roof boards same as toilet rooms. Cinder block to receive a wash coat of sand & cement to fill pores in blocks. Cinder blocks & cement asbestos board walls to receive two (2) coats rubber base paint (Truscon's "Para-Stone-Tan". Color to be approved by the Lansing Office.)  
 EXTERIOR FINISH -- Finish all siding, rafter tails, under side of exposed roof boards, posts, lookouts and any exposed wood surface with a light brown stain made of a solution of light brown pentachlorophenol. Two (2) coats minimum required.  
 Roof - Wood shingles to be stained with dark brown Carbo-Sole Cresote oil by the emersion method. Steel Sash to have two (2) coats of black oil house paint.

